

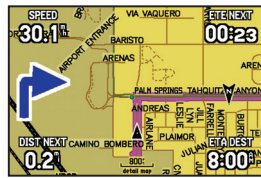


It sees more, shows more,
and does more for pilots
than any GPS portable in
the history of aviation.

GPSMAP® 496 specifications

Building on the success of its GPSMAP® 396 – the first aviation portable to combine satellite datalink weather with color moving map and terrain alerting – Garmin now adds even more “high-end” software and features to the new GPSMAP® 496. These upgrades include:

- Preloaded City Navigator® NT automotive street mapping, with turn-by-turn voice prompts, for all of North America or Europe: Go from skyways to highways with no map software loading required.
- Garmin SafeTaxi™ data provides detailed taxiway diagrams and position information for over 650 U.S. airports.
- AOPA's Airport Directory offers detailed information on over 5,300 U.S. airports, along with airports of entry for Canada, Mexico and the Caribbean. Includes names and phone numbers of over 6,000 FBOs and fuel/service facilities, plus ground transportation, local attractions, and more.



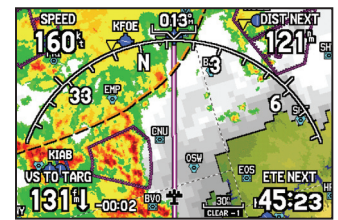
City Navigator® street mapping

Enhanced terrain and aviation databases will supply even more visual reference to the pilot. The addition of private airports and heliports to the database provides more navigation and emergency “nearest” options.

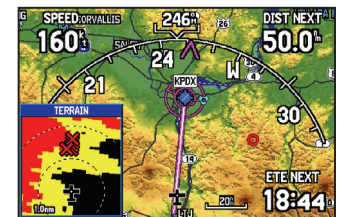
- Faster 5 Hz GPS updating of map data and “Panel” display gives a smoother, near “real-time” presentation of turn coordinator and HSI for added realism and safety.

With integrated GXM 30A Smart Antenna, the GPSMAP 496 lets pilots access everything from NEXRAD radar imaging to over 170 channels of XM Satellite Radio infotainment. And with a Garmin Mode S transponder, the unit will also display TIS traffic alerts.

Weather. Terrain. Traffic. Navigation. Entertainment. And more. That's Garmin's GPSMAP 496: The world's most highly evolved aviation portable.



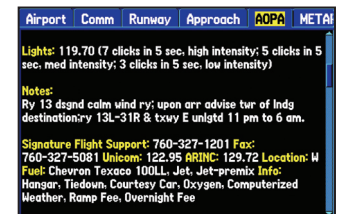
XM WX satellite weather, overlaid on moving map



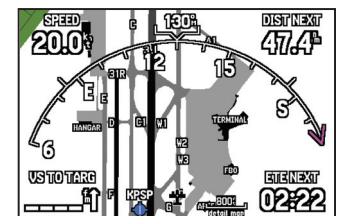
Pop-up Terrain Alert display with voice warnings



Panel display—5 Hz update rate gives faster, smoother presentation



AOPA's Airport Directory data



Taxiway diagrams

Navigation features

Waypoints:

Total: 3,000 with 10 characters (name and symbol)
Nearest: Continuously updated; Airport, VOR, NDB, INT, user, ARTCC, FSS, airspace, Wx

Routes: 50 reversible routes with up to 300 points each, plus TracBack® modes, Automatic turn-by-turn along-road routes with voice navigation

Tracks: 10,000 point automatic track log; 15 saved tracks; 1,000 points per saved track; lets you retrace your path in both directions

Trip computer: Trip odometer, stopped time, moving average, moving time, total average, total time, maximum speed, odometer

Alarms: Airspace, arrival, off-course, proximity waypoint, clock

Tables: Built-in celestial tables for best times to fish and hunt, sunrise and sunset, sun and moon by date and position

Map datums: More than 100 plus user datum

Position format: Lat/Lon, UTM/UPS, Maidenhead, MGRS, Loran TDs and other grids, including user grid

GPS performance

Receiver: WAAS enabled, 12 parallel channel GPS receiver continuously tracks and uses up to 12 satellites to compute and update your position

Acquisition times:

Warm: Approximately 15 seconds
Cold: Approximately 45 seconds
AutoLocate™: Approximately 2 minutes

Update rate: 5/second, continuous

GPS accuracy:

Position: < 15 meters, 95% typical*
Velocity: 0.05 meter/sec steady state

DGPS (USCG) accuracy:

Position: 3-5 meters, 95% typical
Velocity: 0.05 meter/sec steady state

DGPS (WAAS) accuracy:

Position: < 3 meters, 95% typical
Velocity: 0.05 meter/sec steady state

Dynamics:

6 g's

Interfaces:

RS232 port with NMEA 0183, RTCM 104 DGPS data format and proprietary Garmin USB interface. Accepts aviation input format from panel-mount GPS. Also can connect to Garmin SL30 and SL40 for frequency tuning and GTX 330 for TIS traffic alerts.

Antenna: Removable quad-helix

Differential: WAAS, marine beacon

Moving map features

Basemap:

Built-in routable basemap (North America and South America) shows roads, services, metro areas and surface features

Database:

Built-in Jeppesen® database with terrain and obstacle data bases. Includes worldwide airports and VOR's, plus Americas, or Atlantic International, or Pacific International NDB's, intersections, special use and controlled airspace, runway data, plus airport, FSS, and ARTCC frequencies. GPSMAP 496 adds locations for private airports and heliports (U.S. only). Also, Garmin SafeTaxi™ data supports detailed airport and taxiway diagrams at over 650 U.S. airports. For European users, VFR Reporting Point data is available for reference on the moving map.

Approach waypoints: Jeppesen® data also includes final approach sequence waypoints for all published approaches.

AOPA's Airport Directory:

Included AOPA directory contains detailed information on over 5,300 U.S. airports, along with airports of entry for Canada, Mexico and the Caribbean. Includes names and telephone numbers of aircraft services, fuel outlets, transportation, and more.

Car navigation:

Internal storage comes preloaded with MapSource® City Navigator® NT for North America or Europe. Provides street-level detail and addresses, plus listings of nearby restaurants, hotels, ATMs, etc.

Custom POIs:

Supports user-created custom points-of-interest (POI) data, using Garmin's free POI Loader software.

Uploadable maps: Accepts optional Garmin data cards for detailed maps.

Power

Source: Rechargeable lithium battery

Battery life: 5-15 hours of use (depending on backlight settings)

Physical

Size: 5.7" W x 3.2" H x 1.9" D
(14.47 x 8.12 x 4.82 cm)

Weight: 14.2 ounces (400 g) with battery

Display: 3.8" diagonal (9.65 cm) 320 x 480 pixels, 256 color sunlight readable TFT with adjustable backlighting

Case: Fully gasketed, high impact plastic alloy, waterproof to IEC 60529 IPX7 standards**

Temperature range: 5°F to 158°F (-15°C to 70°C)

User data storage: Indefinite

Accessories

Standard: GXM 30A Smart Antenna, carrying case, auto mount, USB interface cable, GA 25 portable antenna, free single Jeppesen® update, 12-volt automotive adapter cable with speaker, yoke mount, owner's manual, quick reference guide, wall charger, friction mount

Optional: MapSource CD-ROMs



Garmin International, Inc. 1200 East 151st Street, Olathe, KS 66062, p: 913.397.8200 f: 913.397.8282
Garmin (Europe) Ltd. Unit 5, The Quadrangle, Abbey Park Industrial Estate, Romsey, SO51 9DL, U.K. 44.1794.519944 fax 44.1794.519222
Garmin Corporation, No. 68, Jangshu 2nd Road, Shijr, Taipei County, Taiwan 886.2.2642.9199 fax 886.2.2642.9099

Specifications are preliminary and subject to change without notice.

* Subject to accuracy degradation to 100 m 2DRMS under the United States Department of Defense-imposed Selective Availability (SA) program.

**Up to 1 meter for 30 minutes.