

GARMIN[®]

GARMIN[®]

GARMIN.COM



» LAKEVÜ CARTOGRAPHY CATALOG

LAKEVÜ HD • LAKEVÜ HD ULTRA

DETAILED MAPS THAT HELP FIND FISH

With mapping detail so precise - down to 1' contours, it gives you valuable insight into bottom structure, helping you pinpoint exactly where to drop your line. Find submerged riverbeds, bridges and other fish attractors as well as potential hazards. You'll also have shoreline features like dock outlines, campgrounds, boat ramps, marinas and much more. Coverage of over 17,000 lakes and waterways in the US and over 13,500 in Canada, you're sure to have what you need at your fingertips for a successful day on the water.

LAKEVÜ HD US AND LAKEVÜ HD CANADA

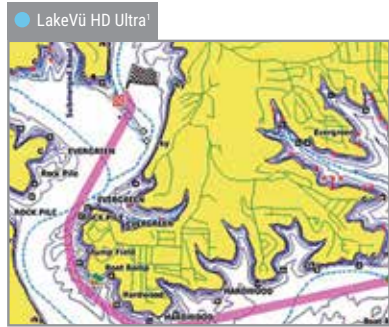
LakeVü HD US and LakeVü HD Canada are Garmin's advanced freshwater map offerings, covering US and Canada, providing precise detail and features that are reliable and easy to use.

LAKEVÜ HD ULTRA US AND LAKEVÜ HD ULTRA CANADA

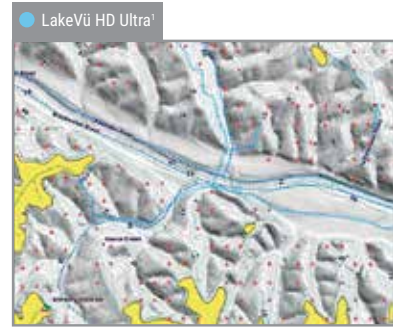
LakeVü HD Ultra US and LakeVü HD Ultra Canada are Garmin's premium freshwater map offerings, covering US and Canada, bringing in all the reliability and features of LakeVü HD while adding industry leading features like AutoGuidance and Fishing Hot Spots Pro.



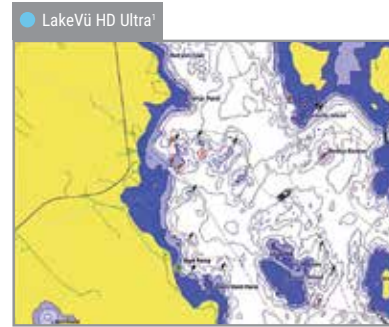
LAKEVÜ FEATURES



Auto Guidance directs you to your hot spots by creating a suggested route on screen for your boat that seeks to avoid shallow water and other charted obstructions.



High Resolution Relief Shading adds visual depth to the 2D map making it easier to interpret contours and find fish holding structure.



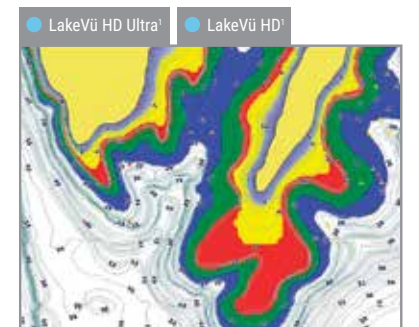
Dynamic Lake Level allows you to adjust your maps to the lake's current water levels giving you a better idea of spots that are either accessible or too shallow to explore.



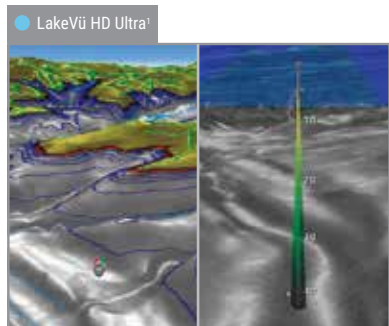
Surface and Side Scan Photos give you a clear visual reference of notable spots above and structure below the surface of the water.



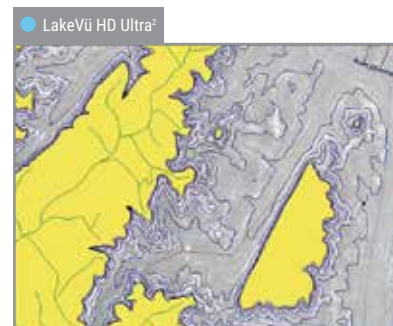
Fishing Hot Spots allows you to quickly spot submerged structures, vegetation and weed coverage, artificial habitat locations, submerged road beds and more.



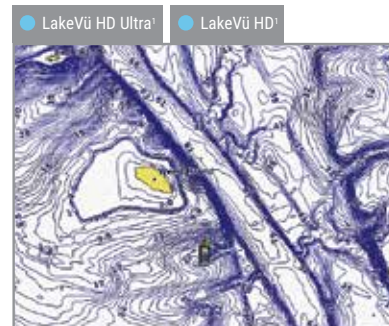
Depth Range Shading displays high-resolution shading for up to 10 depth ranges so you can view your designated target depth.



MarinersEye View provides a 3D representation of the surrounding area both above and below the waterline. FishEye View shows 3D representation of lake bottom and contours as seen from below the waterline.



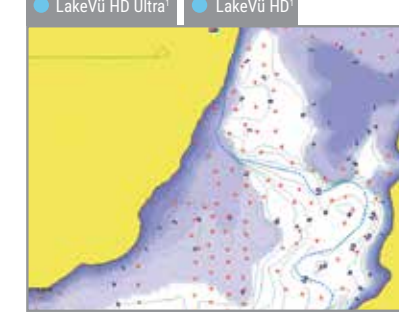
Sonar Imagery shows a nearly photographic view of the bottom, as if all the water had been drained away.



1' Contours provide a detailed and clear view of the lake floor so you can catch more fish and navigate with confidence.



High Resolution Satellite Imagery provides superior situational awareness.



Shallow Water Shading lets you input and shade a minimum depth to help you avoid running aground.



Displays campgrounds, highways and roads and underwater features like fish attractors and potential hazards.

¹Included on 13,000 U.S. lakes and 4,800 Canadian lakes ² Only available on 700 US lakes ³ Only available on LakeVü HD Ultra US

ACTIVECAPTAIN™ APP

The free all-in-one ActiveCaptain™ app provides a powerful connection to your Garmin chartplotter, charts, maps and the community for the ultimate connected boating experience. Wherever you are, you'll have unlimited access to your cartography, the ability to purchase new maps and charts and access to the Garmin Quickdraw™ Contours Community.



Connect to the ActiveCaptain community for up-to-date feedback on marinas and other points of interest. Smart notifications on your chartplotter screen keep you connected with everyone else. Plan a trip or pre-fish a lake, and ActiveCaptain will automatically sync with your chartplotter. Even view and control your chartplotter from your smartphone or tablet while you're on the water.



- OneChart™ lets you access all your charts and maps from your mobile device and purchase new ones
- Get smart notifications, such as calls and texts, on your chartplotter display when paired with the app
- Connect to fellow boaters with the ActiveCaptain™ community for up-to-date feedback on marinas and other points of interest
- Make, save and transfer routes and waypoints between the app and chartplotter – with zero button presses¹
- Easily upload and download the latest Garmin Quickdraw™ Contours content from the community – with zero button presses¹
- Download software updates and notifications from the app to your Garmin devices
- View and control your chartplotter from your smartphone or tablet



¹Zero button presses applies to GPSMAP® chartplotters only

NEW CHART GUARANTEE

Customers who purchase new preprogrammed Garmin LakeVü HD or LakeVü HD Ultra microSD™ cards are entitled to 1 free update¹ of the newest version of charts. If eligible, customers can update cards using our website. Updated charts will be for the same (or equivalent²) region as the original purchase.

DISCOUNTED CARD UPDATE PROGRAM

Customers may update their existing preprogrammed LakeVü HD or LakeVü HD Ultra microSD/SD card for a discounted price¹. Updated charts will be for the same (or equivalent²) region as the original purchase.

¹Limit 1 free update per card. New Chart Guarantee valid within 12 months of purchase.

²Equivalent region to be determined at the sole discretion of Garmin. Customer will have an opportunity to view available coverage before purchasing and/or updating.

UNITED STATES

LakeVü HD Ultra			
Region	Title	Part Number	Price
LVUS100F	LakeVü HD Ultra - US	010-C1110-00	\$199.99

LakeVü HD			
Region	Title	Part Number	Price
LUS100F	LakeVü HD - US	010-C1087-00	\$149.99



CANADA

LakeVü HD Ultra			
Region	Title	Part Number	Price
LVCA100F	LakeVü HD Ultra - Canada	010-C1114-00	\$199.99

LakeVü HD			
Region	Title	Part Number	Price
LCA100F	LakeVü HD - Canada	010-C1113-00	\$149.99



Garmin LakeVü™ HD Ultra, and Garmin LakeVü™ HD Copyrights and Warnings Disclaimer:



WARNING

GARMIN MAKES NO WARRANTY AS TO THE ACCURACY OR COMPLETENESS OF MAP DATA IN THIS PRODUCT AND DISCLAIMS ANY AND ALL EXPRESS, IMPLIED OR STATUTORY WARRANTIES, INCLUDING ANY IMPLIED WARRANTY OF MERCHANTABILITY OR FITNESS FOR A PARTICULAR PURPOSE. IT IS THE USER'S RESPONSIBILITY TO USE THIS PRODUCT PRUDENTLY. THIS PRODUCT IS INTENDED TO BE USED ONLY AS A TRAVEL AID AND MUST NOT BE USED FOR ANY PURPOSE REQUIRING PRECISE MEASUREMENT OF DIRECTION, DISTANCE, LOCATION OR TOPOGRAPHY.

WARNING:
GARMIN MAP DATA AND BOTTOM INFORMATION ARE FOR NAVIGATION REFERENCE ONLY, AS BOTTOM CONDITIONS ARE CONTINUALLY CHANGING. THIS PRODUCT IS FOR GENERAL REFERENCE.

The chart and cartographic information in this product is reproduced, in whole or part, with the permission of the following government agencies and other organizations: Alabama Department of Conservation and Natural Resources; Alabama Electric Cooperative; Alberta Geological Survey; Arkansas GEOSTOR; Arkansas Game & Fish Commission; Arkansas Highway and Transportation Department, Boat Ramps 1/2000; © 2015-2016 Boat Owners Association of the United States; Province of British Columbia; Castle Lake Limnological Research Station; City of Escondido, CA; Department of Water Resources, Sacramento, CA; Monterey County, CA Water Resources Agency; California Department of Fish and Wildlife; University of California; This product has been produced by Garmin GmbH based on Canadian Hydrographic Service (CHS) data, following any minimum standards/guidelines that may have been established by CHS, pursuant to CHS Digital Value-Added Reseller Agreement No. 2013-0315-1260-G. The incorporation of data sourced from CHS in this product shall not be construed as constituting an endorsement by CHS of this product.; Padre Dam Municipal Water District; Redlands Institute, University of Redlands; Valerie Aubrey, owner and publisher of Eagle Lake Fishing Information and Network www.eaglelakefishing.net and www.eaglelakefishing.info © 2004-2016; Colorado State Parks; Connecticut Water Trails Association; State of Connecticut, Department of Environmental Protection; Delaware Coastal Program; Delaware Department of Natural Resources and Environmental Control (DNREC); Delaware Department of State Parks; Delaware Division of Fish & Wildlife, Division and Sport Fish Restoration funding from the US Fish & Wildlife Service; City of Lakeland, FL; Florida Center for Community Design & Research (Water Atlas); Florida Fish and Wildlife Conservation Commission, MyFWC.com; Florida LakeWatch, a program in the Department of Fisheries and Aquatic Sciences, University of Florida/ Institute of Food and Agricultural Sources; St. Johns River Water Management District, FL; Fish and Wildlife Research Institute (FWRI), Center for Spatial Analysis; Georgia Department of Natural Resources, Wildlife Resources Division; Idaho Department of Fish and Game, Idaho Fish and Wildlife System; Idaho Department of Environmental Quality; Limnology Laboratory, Iowa State University; Iowa Department of Natural Resources; Illinois Department of Natural Resources; Lake County, IL Health Department; Indiana Department of Natural Resources; Kansas Biological Survey – Kansas Applied Remote Sensing; Kansas Department of Wildlife and Parks; Kentucky Department of Fish and Wildlife Resources; Kingfisher Maps, Inc. © 2008; Louisiana Department of Wildlife and Fisheries, Inland Fisheries Division; Luna Leopold; Maine Department of Conservation, Bureau of Parks and Lands; Maine Department of Inland Fisheries & Wildlife; Maine Geological Survey; Maine Office of Geographic Info; Maryland Department of Natural Resources; Maryland Geological Survey; Massachusetts Department of Fish and Game; Massachusetts Executive Office of Environmental Affairs; Office of Geographic Information (MassGIS), Commonwealth of Massachusetts, Information Technology Division; © 2002-2016 State of Michigan; Michigan Department of Natural Resources; Lake Temple Property Owner's Association; Minnesota Department of Natural Resources; Dallas County 9-1-1, Buffalo, MO; Missouri Department of Conservation; Mississippi Department of Wildlife, Fisheries and Parks; Mountain Press Publishing Co; Montana Fish, Wildlife & Parks; National Hydrography Dataset; Nebraska Game and Parks Commission, Fisheries Division; Nevada Department of Conservation and Natural Resources, Division of Water Resources; New Hampshire Department of Environmental Services; New Hampshire GRANIT; New Hampshire Marine Patrol; New Hampshire Office of Energy and Planning; New Hampshire Fish and Game Department; New Jersey Division of Fish and Wildlife; New Mexico Interstate Stream Commission; New York State Department of Environmental Conservation; Alfred University, NY; National Oceanic Atmospheric Administration (NOAA); North Carolina Department of Parks and Recreation; 7-19-2007, Stanley Riggs, Department of Geological Services, East Carolina University, Greenville, NC 27858; North Carolina Wildlife Resources Commission; North Dakota Game and Fish Department; Nova Scotia Department of Fisheries and Aquaculture; Ohio Department of Natural Resources, Division of Watercraft; Oklahoma Water Resources Board; Oklahoma Department of Wildlife Conservation; Ontario Ministry of Natural Resources; The Fly Fishing Shop, <http://www.flyfishusa.com>; Eastern Oregon University; Government of Quebec; Rhode Island Geographic Information System; Saskatchewan Ministry of Environment (EGSB); Courtesy of Sea Tow Services International; Shoshone-Bannock Tribes; South Carolina Department of Natural Resources; South Dakota Game, Fish and Parks; Sydney Lake Lodge (Ontario); Take Pride in America and Crab Orchard Natl. Wildlife Refuge; Mr. Tom Dunigan, University of Tennessee; Tennessee Valley Authority (TVA); Tennessee Wildlife Resources Agency; Lower Colorado River Authority; Texas Water Development Board © 1993-2016 (TWDDB); Brigham Young University, Department of Geological Sciences; UK Hydrographic Office, Her Majesty's Stationery Office© the British Crown (2001-2016), GB AC-002-Garmin. All rights reserved; U.S. Department of Agriculture; U.S. Army Corps of Engineers (USACE); U.S. Army; U.S. Bureau of Reclamation; U.S. Engineers Office; U.S. Fish and Wildlife Services; U.S. Forest Service; U.S. Geological Survey (USGS); U.S. National Park Service, Grand Teton National Park and Glacier National Park; Utah Department of Environmental Quality, Water Quality Division; Vermont Department of Environmental Conservation, Water Quality Division; City of Norfolk, VA; Virginia Department of Fish and Wildlife; Virginia Department of Game & Inland Fisheries (VDGIF Maintained Boating Access Locations, 8/24/2005); Snohomish County Public Works Surface Water Management; Washington State Department of Ecology, <http://www.ecy.wa.gov/siteinfo.html>; Washington State University & Colville Confederated Tribes; Washington Interagency Committee for Outdoor Recreation; West Virginia Department of Natural Resources; Northern Highland – American Legion State Forest; Wisconsin Department of Natural Resources; University of Wisconsin – Stevens Point; Yukon lake bathymetry compiled by Yukon Department of Environment.; Natural Research Council Canada (GeoGratis), © Department of Natural Resources Canada. All rights reserved.

Satellite imagery courtesy of DigitalGlobe, Inc.; Basemap imagery © 2016 MDA FEDERAL, INC

**Satellite imagery is included for many Garmin LakeVü™ HD Ultra Lakes.

Road data © 1987-2016 HERE. All rights reserved. Use of the Map Data is subject to certain restrictions and/or requirements imposed by third party suppliers and/or governmental or regulatory authorities as further set forth at http://corporate.navteq.com/supplier_terms.html.

Additional city point data is courtesy of National Highway Planning Network on behalf of Federal Highway Administration (FHWA), United States Department of Transportation. Canadian shoreline information in this product is reproduced, in whole or part, courtesy of CanVec+ Government of Canada; © Department of Natural Resources Canada; Earth Sciences Sector; Canada Centre for Mapping and Earth Observation. All rights reserved. <http://www.geogratis.gc.ca/geogratis/en/index.html>.

LakeVü™ HD Ultra Lakes DEM data © 2012-2016 Intermap Technologies Inc. All rights reserved. Intermap, the Intermap logo, and NEXTmap is a registered trademark of Intermap Technologies, Inc. in the U.S. and other countries.

Garmin Lake Facts are not available for all lakes contained in product. Lake Fact source information can be found in product.

WARNING:

No government agency, hydrographic office, or other organization has verified the information in this product, and none accepts liability for the accuracy of reproduction or any modifications made thereafter. No government agency or other organization warrants that the product satisfies national or international regulations regarding the use of the appropriate products for navigation or that it contains the latest information available.

WARNING:

Garmin Digital maps/charts should not be used as the sole means of navigation. Digital maps/charts are intended to be used as an aid to traditional navigational charts, not as a replacement. Only official government charts contain all information needed for the safety of navigation, and as always, the captain is responsible for their prudent use. A prudent navigator never relies on any single source of navigational information. Garmin strives to provide its customers with the most economical, accurate and up-to-date electronic maps available. However, features are continually changing, so the data may not reflect the latest modifications and/or additions in your area. Garmin makes no warranty as to the accuracy or completeness of the map data.

WARNING:

Some of the information in this product may have been produced, in part or whole, from withdrawn government agency and other organization products. Changing conditions will render this product obsolete and inaccurate.

WARNING:

This product does not meet the requirements of the Charts and Nautical Publications Regulations, 1995 under the Canada Shipping Act, 2001. Charts and publications issued by or on the authority of CHS, must be used to meet the requirements of those regulations. Tennessee Valley Authority expressly disclaims any warranties or representations whatsoever with respect to the data in this product, including any warranty of non-infringement, merchantability or fitness for a particular purpose, any warranty that the material is accurate or suitable for your needs, or any warranty that the material will not result in injury or damage when used for any purpose.

DISCLAIMER:

U.S. National Park Service / Department of the Interior (NPS) property ownership data is compiled from deeds, plats, surveys, and other source data. These are not engineering quality drawings and should be used for administrative purposes only. The National Park Service shall not be held liable for improper or incorrect use of the data described and/or contained herein. These data and related graphics are not legal documents and are not intended to be used as such. The information contained in these data is dynamic and may change over time. The data are not better than the original sources from which they were derived. It is the responsibility of the data user to use the data appropriately and consistent within the limitations of geospatial data in general and these data in particular. The related graphics are intended to aid the data user in acquiring relevant data; it is not appropriate to use the related graphics as data. The National Park Service gives no warranty, expressed or implied, as to the accuracy, reliability, or completeness of these data. It is strongly recommended that these data are directly acquired from an NPS server and not indirectly through other sources which may have changed the data in some way. Although these data have been processed successfully on a computer system at the National Park Service, no warranty expressed or implied is made regarding the utility of the data on another system or for general or scientific purposes, nor shall the act of distribution constitute any such warranty. This disclaimer applies both to individual use of the data and aggregate use with other data. The data is intended for use as a tool for display and general GIS analysis purposes only. It is in no way intended for engineering or legal purposes. The data accuracy is checked against best available sources which may be dated. NPS assumes no liability for use of this data.

DISCLAIMER:

Information provided in the MI Geographic Data Library is accurate to the best of our knowledge and is subject to change on a regular basis, without notice. While the Center for Geographic Information (CGI) makes every effort to provide useful and accurate information, we do not warrant the information to be authoritative, complete, factual, or timely. Information is provided on an "as is" and an "as available" basis.

The State of Michigan disclaims any liability, loss, injury, or damage incurred as a consequence, directly or indirectly, resulting from the use and application of any of the contents of <http://www.mgci.state.mi.us/mgdl/>.

DISCLAIMER:

The data represent the results of data collection and/or processing for the specific Oklahoma Water Resources Board (OWRB) activity or purpose described in metadata as follows; The purpose of this data is for current lake volume calculations, and future sedimentation studies on McGee Creek Lake, Lake Stanley Draper, Lake Hefner, Lake Eucha, and Atoka Lake. The purpose of this coverage is to show the collected bathymetric survey points of Sardis Lake, Spavinaw Lake, Lake Overholser, Lake Murray, Lake Frederick, Hugo Lake, Heyburn Lake, Dave Boyer Lake, El Dorado Lake, Grand Lake O' the Cherokees, Lake Ellsworth, Lake Lawtonka, and Okemah Lake. These depth points were used to create the surface model of the lake bottom and to calculate the lake volume. As such, the data are valid only for their use, content, time, and accuracy specifications determined or intended by, or acceptable to, the OWRB. These data are not guaranteed to be useable, timely, accurate, or complete. The user is responsible for any use of these data other than their use by the OWRB, and for the results of any application of the data for other than the purpose intended by the OWRB. Although these data have been processed successfully on a computer system at the OWRB, NEITHER THE STATE OF OKLAHOMA NOR THE OWRB NOR ANY OTHER AGENCY THEREOF, NOR ANY OF THEIR EMPLOYEES, CONTRACTORS, OR SUBCONTRACTORS, MAKE ANY WARRANTY, EXPRESS OR IMPLIED, NOR ASSUME ANY LEGAL LIABILITY OR RESPONSIBILITY FOR OR AS TO THE ACCURACY, COMPLETENESS, USEFULNESS OR MERCHANTABILITY OF ANY DATUM, SOFTWARE, INFORMATION, APPARATUS, PRODUCT, OR PROCESS DISCLOSED, NOR REPRESENT THAT ITS USE WOULD NOT INFRINGE ON PRIVATELY OWNED RIGHTS. NOR SHALL THE ACT OF DISTRIBUTION CONSTITUTE ANY SUCH WARRANTY. THIS DISCLAIMER APPLIES BOTH TO INDIVIDUAL USE OF THE DATA AND AGGREGATE USE WITH OTHER DATA. Conclusions drawn from or actions undertaken on the basis of, such data and information are the sole responsibility of the user. Users are cautioned to consider carefully the provisional nature of these data and information before using them for decisions that concern personal or public safety or the conduct of business that involves substantial monetary or operational consequences. Without limiting the generality of the foregoing, THESE DATA SHOULD NOT BE USED TO IDENTIFY UNDERWATER HAZARDS INCLUDING BUT NOT LIMITED TO ROCKS, SHOALS, AND VEGETATION. THESE DATA SHOULD NOT BE USED FOR NAVIGATION PURPOSES.

DISCLAIMER:

The data provide by New Hampshire Department of Environmental Services is a rough estimate of a lake's depth contours and SHOULD NOT be used for navigational purposes.

DISCLAIMER:

The NH Fish and Game Department makes no claim as to the validity or reliability or to any implied uses of these data.

DISCLAIMER:

Digital data in New Hampshire Geographically Referenced Analysis and Information Transfer System (NH GRANIT) represent the efforts of the contributing agencies to record information from the cited source materials. Complex Systems Research Center (CSRC), under contract to the Office of State Planning (OSP), and in consultation with cooperating agencies, maintains a continuing program to identify and correct errors in these data. Neither OSP nor CSRC make any claim as to the validity or reliability or to any implied uses of these data. CSRC maintains documentation on all methods used to collect and process these digital data and will provide this information to users upon request. OSP and CSRC will not be responsible for, or provide technical support for uses of NH GRANIT data which are redistributed by a user to a second or subsequent parties, except for municipalities which have obtained data from regional planning agencies.

DISCLAIMER:

The digital data provided by Massachusetts Geographic Information System represent the efforts of the Massachusetts Executive Office of Environmental Affairs (MEOEA) and its agencies to compile or record information from the cited source materials. MEOEA maintains an ongoing program to record and correct errors in these data that are brought to its attention. MEOEA makes no claims as to the absolute validity or reliability of these data or their fitness for any particular use. MEOEA maintains records regarding all methods used to collect and process these digital data and will disclose this information upon request.

DISCLAIMER:

This data was produced by the Lower Colorado River Authority (LCRA) for its own use. Accordingly, certain information, features, or details may have been emphasized over others, or may have been left out. The LCRA does not warrant the accuracy of this data, either as to scale, accuracy or completeness. IN ADDITION, THE LCRA EXPRESSLY DISCLAIMS ANY AND ALL WARRANTIES, EXPRESSED OR IMPLIED, INCLUDING THE WARRANTIES OF MERCHANTABILITY AND FITNESS FOR PURPOSE. If this data is reproduced or displayed on a map, the reproducer shall insure that this disclaimer accompanies the map, and in the event the reproducer fails to include a copy of this disclaimer with the map or data, the reproducer hereby agrees to indemnify, defend, and hold harmless the LCRA and its directors, officers, and employees from and against any and all claims, demands, suits, or judgments, directly or indirectly arising out of reproducer's dissemination of the map or data to others.

DISCLAIMER:

The GIS material is made available as a public service. Maps and data are to be used for reference purposes only and the Missouri Department of Conservation is not responsible for any inaccuracies herein contained. No responsibility is assumed for damages or other liabilities due to the accuracy, availability, use or misuse of the information herein provided. This product is for reference purposes only and is not to be construed as a legal document or survey instrument. Any reliance on the information contained herein is at the user's own risk. GIS information is in the public domain and may be copied without permission; citation of the source is appreciated.

DISCLAIMER:

This product has been created by Garmin Ltd. And its subsidiaries, using data owned by and provided under license from the Province of British Columbia. Reproduction of this product or any such data by any means is prohibited also "DO NOT USE THESE MAPS FOR NAVIGATIONAL PURPOSES. These maps may not reflect current conditions. Uncharted hazards may exist"

DISCLAIMER:

The Quebec bathymetric information contained in this product was produced using the standards in force on the date of its publication. This data has not been checked and/or validated by the Government of Quebec. The Quebec Government does not assume any liability for the accuracy of the bathymetric information or the data included in this product, and it cannot be held liable for any conclusions drawn or injury suffered following the use of this product.

The bathymetric data pertaining to Quebec supplies a general overview of the structures lying below the water surface. The bathymetric data pertaining to Quebec is not intended or appropriate for surface navigation. Uncharted obstacles may exist. Copying the contents in any way whatsoever is strictly forbidden.

DISCLAIMER:

The CanVec+ Data are subject to the GeoGratis License Agreement for Unrestricted Use of Digital Data and Open Government Licence – Canada.) <http://open.canada.ca/en/open-government-licence-canada>. The Information is licensed "as is", and the Information Provider excludes all representations, warranties, obligations, and liabilities, whether express or implied, to the maximum extent permitted by law. The Information Provider is not liable for any errors or omissions in the Information, and will not under any circumstances be liable for any direct, indirect, special, incidental, consequential, or other loss, injury or damage caused by its use or otherwise arising in connection with this licence or the Information, even if specifically advised of the possibility of such loss, injury or damage.

DISCLAIMER:

The City of Lakeland- Florida makes no representations or warranties regarding the information contained herein

NOTICE:

Federal and State laws provide for the protection of certain archaeological and other cultural resources, including objects and sites that might be found in lakes and other bodies of water. It is your responsibility to know about and comply with these laws at all times.

NOTICE:

This product may be programmed on a recycled data card.



This card contains detailed Garmin LakeVü™ HD Ultra, and Garmin LakeVü™ HD map data. For installation and usage instructions, consult the documentation included with your Garmin chartplotter or GPS device. Visit www.garmin.com for more information.