

FEBRUARY 2020 MARINE SOFTWARE UPDATE

PRODUCT UPDATE



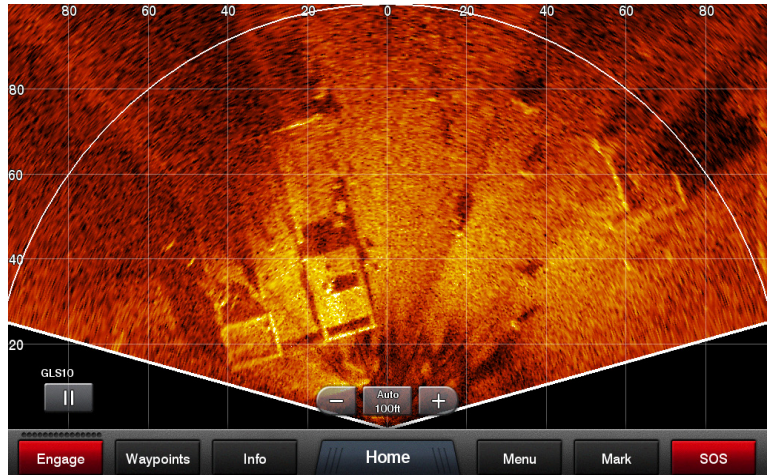
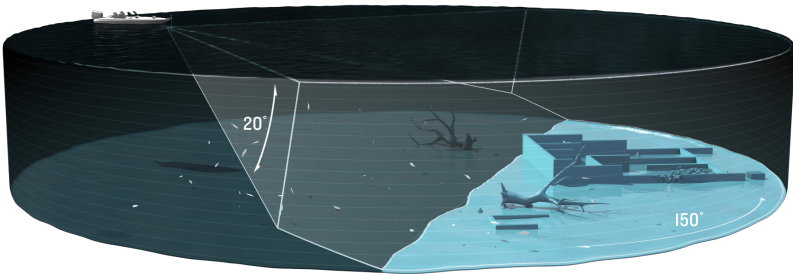
In an ongoing effort to improve our products and provide enhanced features to existing users, we are excited to announce the Feb. 2020 marine software update. It provides improved functionality and new features for the ECHOMAP™ Plus, ECHOMAP Ultra and ECHOMAP UHD chartplotters, GPSMAP® 7x2, 72x Plus, 9x2, 9x2 Plus, 10x2, 12x2, 12x2 Touch, 12x2 Plus and 7400/7600 chartplotters and GPSMAP 8400/8600 premium glass helm chartplotters.

Visit Garmin.com, or use the ActiveCaptain® app for a free download of the software update, or purchase the update on a preloaded data card shipped from Garmin.

Please see below for a few featured highlights found in the update as well as a detailed reference table at the end of the document.

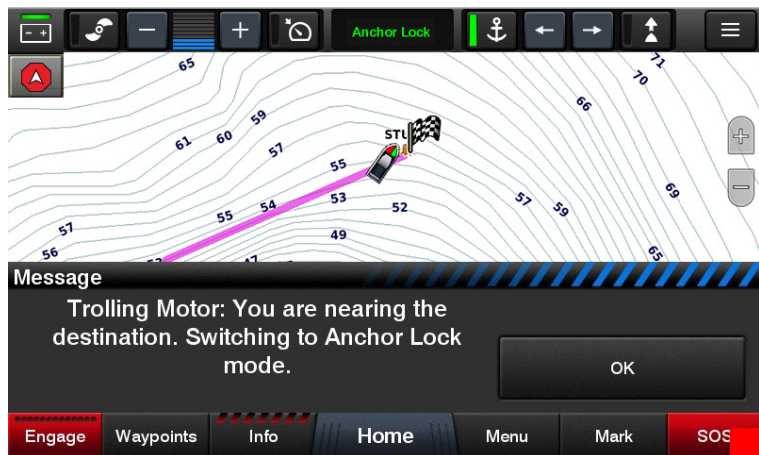
Perspective Mode

The new Perspective Mode, which requires the [perspective mode mount](#), for Panoptix LiveScope™ real-time scanning sonar enables an overhead sonar view for scouting and fishing in shallow water. Update the software on compatible chartplotters¹ to get auto-detection of each mode on the chartplotter screen.



Force® Trolling Motor Arrival Mode

Force trolling motor now has an arrival mode option, which allows the trolling motor to automatically switch to anchor lock upon arrival at the destination.

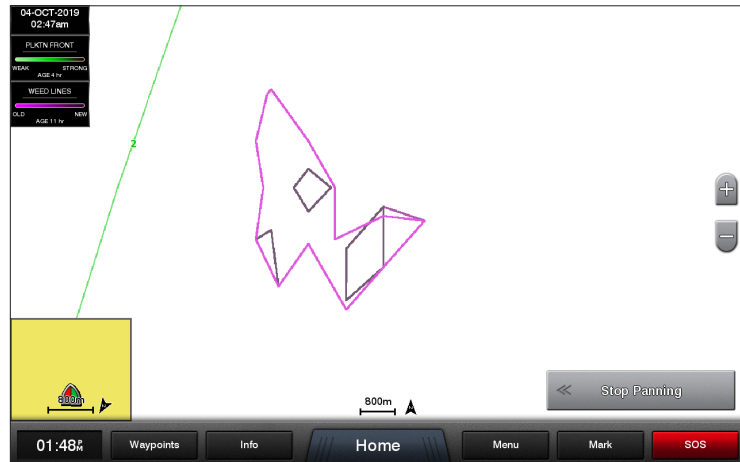


FEBRUARY 2020 MARINE SOFTWARE UPDATE

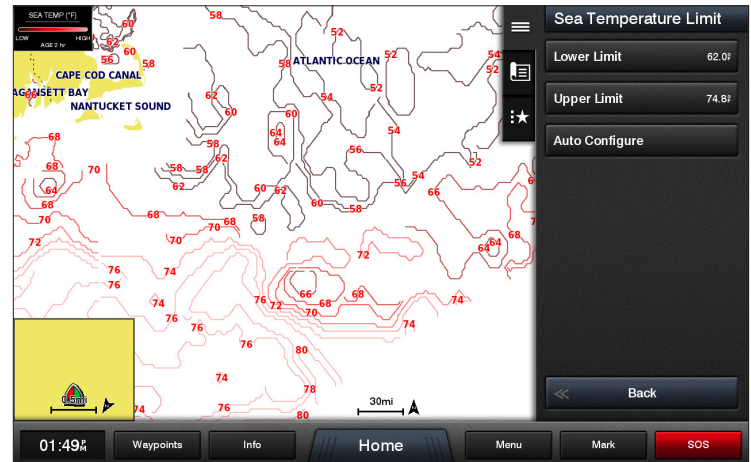
PRODUCT UPDATE

GXM™ 54 weather antenna/SiriusXM® fish mapping improvements

Weed lines now display multiple days of data with shading to indicate time to make it easier to determine the motion of weeds.



Shading range of sea surface temperature and sub surface temperature is now user configurable like the sea temperature limit colorized overlay to help target the preferred temperature of certain fish.



Updated Feature Matrix

	GPSMAP 7400/7600 Series	GPSMAP 8400/8600 Series	GPSMAP 8400/8600xsv Series	GPSMAP 7x2/9x2/12x2 Touch Series	GPSMAP 10x2/12x2 Series	GPSMAP 7x2/9x2/12x2 Plus Series	ECHOMAP™ Plus Series	ECHOMAP UHD Series	ECHOMAP Ultra Series
Camera support									
FLIR® M300/400/500 digital camera integration	x	x	x	x	x	x			
Chartplotters									
Boundary sync over the network	x	x	x	x	x	x			
Add Bahasa/Indonesia							x	x	x
Sonar									
Panoptix LiveScope™ Perspective Mode	x	x	x	x	x	x	x	x	x
SiriusXM®									
GXM 54 weather antenna/SiriusXM fish mapping improvements	x	x	x	x	x	x			
Trolling Motor									
Arrival mode and auto anchor	x	x	x	x	x	x	x	x	

*Compatible with GPSMAP® 8400/8600 series MFDs, GPSMAP 7400/7600, 1002/1202, GPSMAP 1202/1202xsv Touch, 702/902 series chartplotters and X2 Plus series and ECHOMAP™ Plus 70cv/70sv and ECHOMAP UHD and 90sv chartplotter/sonar combo series

Sirius, XM and all related marks and logos are trademarks of Sirius XM Radio Inc.