

GARMIN

ICE FISHING SERIES

2024-2025



CATCHING FISH BEATS DRILLING HOLES. WE'LL HELP YOU DO IT.

When the temperatures drop and the water's surface freezes, the fishing still can be great — as long as you have the right gear for finding the best spots to drill and fish. That's why you go with Garmin technology: fishfinders and chartplotter/sonar combos that clearly show you what's happening below. Forget the guesswork, the random ice drilling. If you want to spend more time angling than auguring, a Garmin ice fishing bundle or kit is the gear that gets results. Plus, when warmer weather returns, your sonar can easily transition to your boat for year-round fishing at its best.



GARMIN[®]

LIVESCOPE™ AND LIVESCOPE™ PLUS ICE FISHING BUNDLES

LiveScope Ice Fishing Bundle Part No.: 010-02688-30
LiveScope Plus Ice Fishing Bundle LI Part No.: 010-02688-35



Our revolutionary LiveScope sonar technology, paired with a large ECHOMAP™ UHD2 93sv keyed-assist touchscreen display, makes these the ultimate bundles for serious fishing on ice — and on open water the rest of the year with an optional boat kit. The LiveScope Ice Fishing Bundle includes a 12Ah battery, while the LiveScope Plus Ice Fishing Bundle LI includes the LiveScope Plus LVS34-IF transducer and a lightweight 16.5Ah lithium-ion battery — so you can fish even longer.

The LiveScope Plus Ice Fishing Bundle LI features a compact GLS™10 black box and the LVS34-IF transducer with improved clarity, reduced noise and better target separation. Easily adjust the transducer to your fishing technique with LiveScope Forward and LiveScope Down modes. See what's happening under the ice in real time to locate fish and structure up to 200' in any direction. You can create a custom split-screen layout that combines flasher, map and LiveScope views on the display. Plus, you get preloaded Garmin Navionics+™ mapping with integrated Navionics® data covering more than 23,000+ lakes and built-in GPS for finding and marking your favorite spots. Each bundle also includes a battery charger, power cable and a deluxe padded case that's glove-friendly for ice fishing.

PANOPTIX™ PS22-IF ICE FISHING BUNDLE

Part No.: 010-02684-30



Hole hop nonstop with the Panoptix™ PS22-IF Ice Fishing Bundle. This bundle provides detailed mapping, live sonar, and an ultraportable size and weight so you can move faster between holes and find more fish. The large, 7" ECHOMAP UHD2 chartplotter features a touchscreen with keyed assist, 7 Ah battery and two types of sonar: LiveVü™ Forward mode and LiveVü™ Down mode. Best of all, the included Panoptix™ PS22-IF transducer doesn't require a bulky pole mount. The bracket design allows for easy forward and down mode adjustments, while the rotator controls direction and depth. Plus, the removable transducer lens lets you easily change between wide and narrow beams so you can focus on areas of interest. You can even create custom pages that combine sonar and mapping on your display.

Built in Garmin Navionics+™ mapping lets you easily identify your next target area with detailed 1' contours and depth range shading on more than 23,000 U.S. lakes. Plus, it comes with a 1-year subscription to daily map updates, ensuring you always have the most up-to-date and detailed maps.

9"

LIVESCOPE FORWARD AND DOWN

SEE FISH UP TO 200' AWAY – AROUND YOU, BELOW THE ICE

GARMIN NAVIONICS+™
INLAND MAPPING

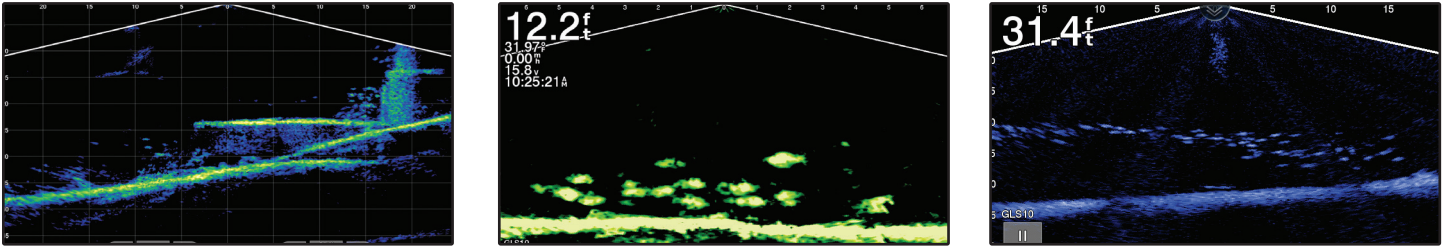
LIVESCOPE PLUS ICE FISHING BUNDLE LI

LVS34IF TRANSDUCER
LIGHTWEIGHT 16.5AH LITHIUM BATTERY

LIVESCOPE ICE FISHING BUNDLE

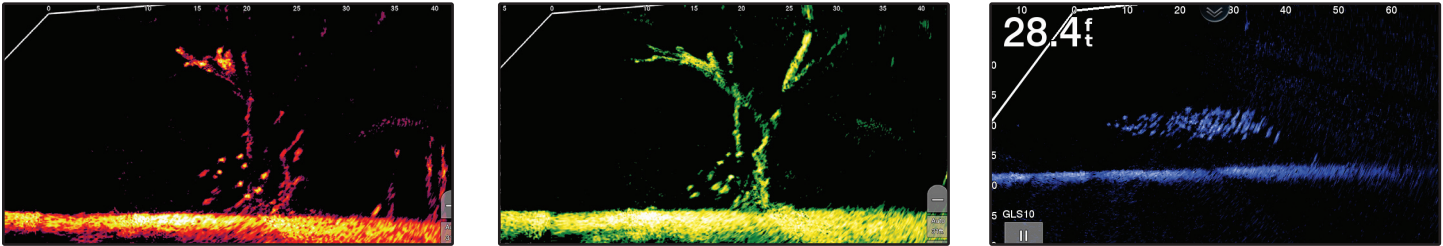
LVS32IF TRANSDUCER
12AH LEAD-ACID BATTERY

LIVESCOPE DOWN



Live, easy-to-interpret scanning sonar images of structure and swimming fish in incredible detail below the ice.

LIVESCOPE FORWARD



An excellent tool for scouting and fishing, it can show real-time scanning sonar images of structure and fish swimming all around below the ice.

7"

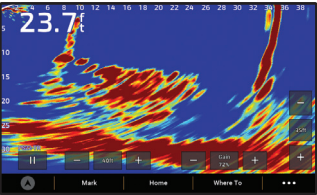
POLE MOUNT-FREE DESIGN

LIVEVÜ FORWARD AND
LIVEVÜ DOWN MODES

REMOVABLE TRANSDUCER LENS

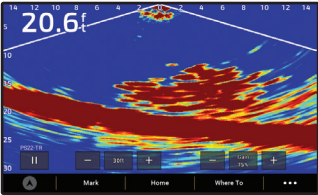
GARMIN NAVIONICS+ MAPPING

LIVEVÜ FORWARD MODE



See up to 100' all around you so you can locate schools of fish and know where to drill.

LIVEVÜ DOWN MODE



Home in on targets so you can watch fish respond to your jig.

TRANSDUCER BRACKET



The bracket attaches directly to the transducer for Forward and Down mode adjustments.

TRANSDUCER ROTATOR



The rotator attaches directly to the transducer cable, allowing for quick depth and direction adjustments with easy-to-read directional indicators.



LIVESCOPE™ PLUS ICE HOUSE SYSTEM

Part No.: 020-00332-00

Outfit your ice house with the LiveScope Plus Ice House System, featuring the 10" GPSMAP® 8610xsv chartplotter or 16" ECHOMAP™ Ultra 2 chartplotter. Both feature a touchscreen display and an HDMI output, so you can display live sonar on a TV or external display.

The bundle also includes a Panoptix™ ice fishing pole mount and LVS34-IF transducer with LiveScope™ Forward mode and LiveScope™ Downmode, which help you easily locate schools of fish. Plus, a GLS™ 10 sonar black box gives you seamless pairing and a crystal-clear picture. And with built-in Garmin Navionics+™ coastal and inland mapping for more than 25,000 lakes, you'll have coverage whether you're on the ice or fishing in the open water.

» 10" OR 16" « HDMI OUTPUT TO DISPLAY SONAR ON TV LIVESCOPE FORWARD MODE AND LIVESCOPE DOWN MODE GLS 10 SONAR BLACK BOX INCLUDES LVS34-IF TRANSDUCER PRELOADED WITH GARMIN NAVIONICS+ INLAND MAPPING «



ECHOMAP™ UHD2 73sv ICE FISHING BUNDLE

Part No.: 010-02684-35

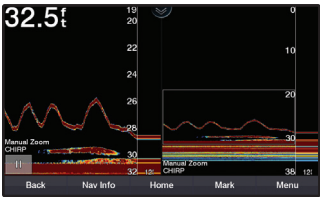


For year-round versatility, this easy-to-set-up chartplotter/sonar combo with vivid 7" keyed-assist touchscreen goes from boat to ice fishing configuration without missing a beat. Its high-narrow CHIRP ice fishing transducer with selectable beamwidth provides crisp, clear fish arches with excellent target separation. A built-in flasher offers precise jig and fish detection. And there's also support for ClearVü™ scanning sonar and its nearly photographic images of what's below the ice (transducer sold separately). You can create custom combination pages that show sonar, flasher and map views simultaneously on your display. Plus, preloaded Garmin Navionics+™ mapping provides exceptional detail on more than 23,000 lakes and includes Quickdraw Contours map drawing software — so you can create and save your own fishing maps with 1' contours.

A rugged, glove-friendly carrying case holds everything you need, including the ECHOMAP™ UHD2 73SV Ice Fishing Bundle, GT10HN-IF CHIRP ice fishing transducer, 7Ah battery, charger, power cable, grommet and foam float.

7" INCLUDES HIGH-NARROW CHIRP TRANSDUCER CLEARVU, SIDEVU™, AND LIVE-SCANNING SONAR CUSTOMIZABLE COMBO SCREEN WITH BUILT-IN FLASHER GARMIN NAVIONICS+™ INLAND MAPPING BUILT-IN QUICKDRAW CONTOURS

CHIRP TRADITIONAL



Crisp, clear CHIRP traditional sonar.

CUSTOMIZABLE COMBO SCREENS



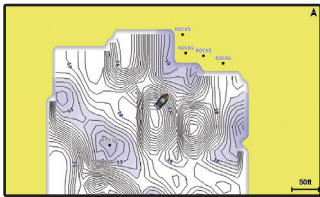
Create custom combination pages that show sonar, flasher and map views simultaneously on your display.

BUILT-IN FLASHER



Built-in sonar flasher ensures precise jig and fish detection under the ice or on your boat.

QUICKDRAW CONTOURS MAPPING



Create and store maps as you fish with 1' contours for up to 2 million acres.



ECHOMAP™ UHD2 53cv ICE FISHING BUNDLE

Part No.: 010-02590-35

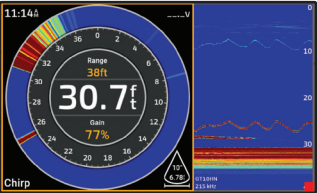
For the high-contrast imagery and mapping you need to locate the best fishing spots on ice, this affordable, portable 5" keyed chartplotter/sonar combo is just the ticket. It's bundled with a dual-beam ice fishing transducer that shows you crisp, clear fish arches with excellent target separation. The built-in flasher lets you see your jig and detects the depth of fish as they swim into the sonar beam. There's also support for ClearVü™ scanning sonar and its nearly photographic images of what's below the ice (transducer sold separately). You can create custom combination pages that show sonar, flasher and map views simultaneously on your display. Plus, you get preloaded Garmin Navionics+™ maps with integrated Navionics® data covering more than 18,000 lakes. There's also support for optional Garmin Navionics Vision+™ cartography. And the included Quickdraw Contours map drawing software that lets you save your own fishing maps with 1' contours.

In addition to the ECHOMAP UHD2 53cv chartplotter and ice fishing transducer, this bundle comes with a 7Ah battery, charger, power cable, grommet and foam float — all in a convenient, glove-friendly carrying case.



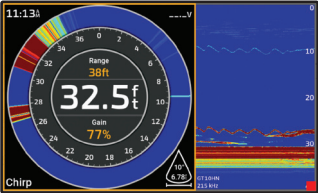
- >> 5" <<
- DUAL BEAM-IF TRANSDUCER
- SUPPORTS CLEARVÜ SCANNING SONAR
- CUSTOMIZABLE COMBO SCREEN WITH BUILT-IN FLASHER
- GARMIN NAVIONICS+ INLAND MAPPING
- BUILT-IN QUICKDRAW CONTOURS <<

CHIRP TRADITIONAL



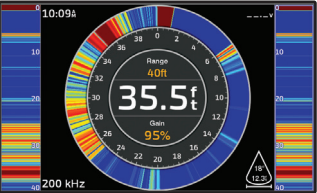
Crisp, clear CHIRP traditional sonar.

CUSTOMIZABLE COMBO SCREENS



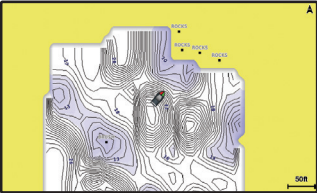
Create custom combination pages that show sonar, flasher and map views simultaneously on your display.

BUILT-IN FLASHER



Built-in sonar flasher ensures precise jig and fish detection under the ice or on your boat.

QUICKDRAW CONTOURS MAPPING



Create and store maps as you fish with 1' contours for up to 2 million acres.

STRIKER™ PLUS 4 ICE FISHING BUNDLE

Part No.: 010-01870-30

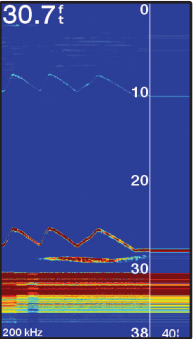
Anytime, anywhere you're ready to go fishing, the compact STRIKER Plus 4 bundle makes it easy to have a great outing. With its bright 4.3" display and intuitive user interface, you'll get a clear view of what's happening below the surface — whether you're fishing on ice or open water with Garmin GT20 CHIRP traditional and CHIRP ClearVü™ scanning sonar (transducer sold separately). The included dual-beam ice fishing transducer with Garmin CHIRP traditional sonar gives crystal-clear images in shallow and deeper water with remarkable target separation. Plus, a built-in high-sensitivity GPS lets you mark the good spots with waypoints so you can easily return to fish them again. Looking down through the ice, the fishfinder's A-scope flasher mode lets you select and view a real-time display of fish swimming into the sonar beam. Then when you transition to a boat for warm-weather fishing, GPS tracking lets you know how fast you're moving so you can be sure you're trolling at the right speed for the lure you're using or the environmental conditions you're dealing with.

This STRIKER Plus 4 ice fishing bundle includes the fishfinder, CHIRP sonar ice fishing transducer, rechargeable 7Ah battery, charger, foam float, grommet and a portable carrying case for it all.



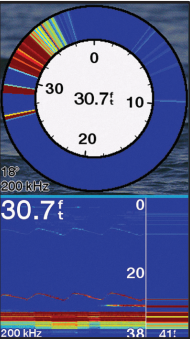
- >> 4" <<
- INCLUDES DUAL BEAM-IF TRANSDUCER
- SUPPORTS CLEARVÜ SCANNING SONAR
- BUILT-IN FLASHER
- MARK WAYPOINTS, NAVIGATE WITH GPS
- BUILT-IN QUICKDRAW CONTOURS <<

CHIRP TRADITIONAL



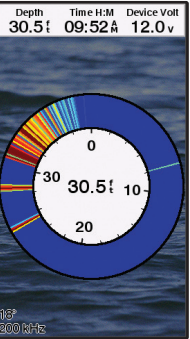
Crisp, clear CHIRP traditional sonar.

CUSTOMIZABLE COMBO SCREENS



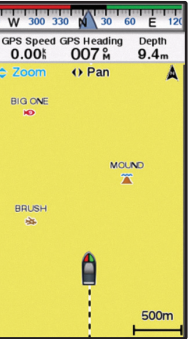
Create custom combination pages that show sonar, flasher and map views simultaneously on your display.

BUILT-IN FLASHER



Built-in sonar flasher ensures precise jig and fish detection under the ice or on your boat.

QUICKDRAW CONTOURS MAPPING



Create and store maps as you fish with 1' contours for up to 2 million acres.

GARMIN®



ICE FISHING KITS

WARM-WEATHER BOAT KITS

LIVESCOPE™ PLUS ICE FISHING KIT

With Battery Part No.: 010-02706-30

Drill fewer holes and catch more fish with the LiveScope Plus ice fishing kit. It includes everything you need to take your ECHOMAP™ Plus/UHD unit from your boat onto the ice. Pair your device with the LiveScope Plus system and see clearer live sonar images with reduced noise and improved target separation. The rugged, portable carrying case fits your ECHOMAP™ 7" or 9" units or GPSMAP® 7" and 9" units. The kit includes a swivel pole mount for the LiveScope Plus transducer, a lead-acid battery with charger and power cable — all with a rugged, glove-friendly carrying case.



LARGE PORTABLE ICE FISHING KIT

With GT10HN-IF Transducer Part No.: 010-12676-00

It's a perfect fit for your STRIKER™ Plus/Vivid 7/9 or ECHOMAP™ Plus/UHD 6x/7x/9x. This ice fishing kit comes complete with a GT10HN-IF high-narrow CHIRP ice fishing transducer plus a glove-friendly bag to protect your devices. Also included are a foam float, grommet, battery with charger, power cable, and built-in cable management and storage.



PANOPTIX™ PS22-IF ICE FISHING KIT

With Panoptix PS22-IF Transducer Part No.: 010-12676-60

Hop faster between holes. This kit includes a Panoptix™ PS22-IF transducer, LiveVü™ Forward mode, LiveVü™ Down mode, glove-friendly bag and 7aH battery. The transducer features an all-new bracket and rotator, which eliminates the need for a bulky pole mount. The bracket allows for easy forward and down mode adjustments, while the rotator controls direction and depth. Plus, the removable transducer lens lets you easily change between wide and narrow beams so you can focus on areas of interest.



SMALL PORTABLE ICE FISHING KIT

With GT8HW-IF Transducer Part No.: 010-12462-10

A rugged, glove-friendly case carries and protects your 4", 5", 6" or 7" Garmin STRIKER fishfinder or ECHOMAP Plus/UHD combo system — while the kit adds the GT8HW-IF high-wide CHIRP ice fishing transducer you need for traditional sonar ice fishing. There's also a foam float, grommet, 7Ah battery with charger, power cable, and built-in cable management and storage.



Move from the ice to open water with ease by adding a compatible boat kit to your ECHOMAP chartplotter — including new transducers for improved sonar detail and clarity. So you can catch more fish, no matter the season.

LIVESCOPE™ AND LIVESCOPE PLUS BOAT KITS

LiveScope Plus: 020-00200-25
LiveScope: 020-00200-24

See the incredible detail from your LiveScope system from your boat with a LiveScope shaft and barrel mounts, GLS™ 10 power cable, Garmin Marine Network Cable 2 m (small connectors) and Cable Coupler (Garmin Marine Network Cables, small connectors).



ACCESSORIES

EXTRA-LARGE CARRY BAG AND BASE

Part No.: 010-12676-05

This is the big bag and base you'll need to carry your LiveScope™ System and ECHOMAP™ Plus/UHD 7x/9x or ECHOMAP™ Ultra 10x and all the various components that make up your ice fishing rig.



GARMIN ICE FISHING TRANSDUCERS

Part No.: 010-12401-20 – GT8HW-IF
Part No.: 010-12677-00 – GT10HN-IF
Part No.: 010-13069-00 – Dual Beam-IF

Garmin ice fishing transducers provide crisp, clear and wide fish arches with excellent target separation. Choose the 4-pin, GT8HW-IF high-wide CHIRP ice fishing transducer for a larger coverage area. Choose the 8-pin, GT10HN-IF high-narrow CHIRP transducer for precise jig and fish detection. Or choose the new 4-pin Dual Beam-IF ice fishing transducer with beamwidths of either 15 or 45 degrees for precise detection and target imaging.



PANOPTIX™ ICE FISHING MOUNT

Part No.: 010-12676-10

This zero-degree tilt shaft pole mount allows you to rotate your Panoptix™ transducer, while under the ice, to locate fish around you. Compatible with your Panoptix™ PS22 and Panoptix LiveScope™ LVS32 transducers.



LIVESCOPE™/PS22 ALL-IN-ONE POWER CABLE

Part No.: 010-12676-40

Use this power cable to connect your LiveScope or Panoptix™ PS22 transducer and ECHOMAP™ UHD2 6xsv/7xsv/9xsv or ECHOMAP™ Ultra 2 10x or 12x chartplotter to the battery of your compatible Garmin ice fishing bundle or kit.



PANOPTIX™ POWER CABLE

Part No.: 010-12676-35

All-in-one power cable makes it easy to connect your Panoptix PS22 transducer and ECHOMAP UHD2 6xsv/7xsv/9xsv or ECHOMAP Ultra Ultra 2 10x or 12x chartplotter to battery power for ice fishing. Compatible with your Panoptix PS22 Ice Fishing Bundle and Panoptix PS22 Ice Fishing Kit.



MARINE NETWORK ADAPTER CABLE

Part No.: 010-12531-10

Convert your compatible device's network connector from small to large so it can connect to a compatible Garmin chartplotter.



LIVESCOPE™ PLUS LVS34-IF TRANSDUCER

Part No.: 010-02706-20

Scan below the ice with improved resolution, reduced noise, clearer images and better target separation in LiveScope Forward and LiveScope Down modes. A durable, flexible cold-weather transducer cable is included.



LIVESCOPE™ LVS32-IF TRANSDUCER

Part No.: 010-12784-10

See live, easy-to-interpret scanning sonar images in incredible detail below the ice with LiveScope Forward and LiveScope Down modes. It includes a new cable that remains flexible in the cold.



PANOPTIX™ PS22-IF TRANSDUCER

Part No.: 010-01945-10

This transducer features an all-new bracket and rotator, which eliminates the need for a bulky pole mount. The bracket allows for easy forward and down mode adjustments, while the rotator controls direction and depth. It includes two types of live sonar: LiveVü™ Forward mode and LiveVü™ down mode.



TRANSDUCER LENS

Part No.: 010-12676-61

Easily change between wide and narrow beams to focus on areas of interest with this removable transducer lens.



LIVESCOPE™ 0° MOUNT

Part No.: 010-12676-15

For use with your LiveScope LVS32 transducer, this 0-degree pole mount positions the transducer for the optimal viewing angle while ice fishing.



LIVESCOPE™ PLUS 0° MOUNT

Part No.: 010-13228-03

Position your LiveScope Plus LVS34 transducer on this 0-degree pole mount for an optimal viewing angle while ice fishing (works for open-water fishing too).



ACCESSORIES CONTINUED

PRICING

LITHIUM-ION BATTERY

Part No.: 010-13140-00

Only the fish will weigh you down. This lightweight 16.4 Ah lithium-ion battery weighs under 3.5 pounds.



12 AH LEAD-ACID BATTERY

Part No.: 010-12676-30

Keep reliable power flowing to your compatible Garmin ice fishing rig, even in seriously cold winter conditions, with this 12 Ah lead-acid battery.



CHARGER FOR LITHIUM-ION BATTERIES

Part no.: 010-13140-05

Stay charged wherever you go with our North America AC charger. Simply plug the adapter into a wall outlet and connect the other end to the power cable included with the purchase of select portable ice kits.



CHARGER FOR LEAD-ACID BATTERIES

Part No.: 010-12676-45

Stay charged wherever you go with our North America AC charger. Simply plug the adapter into a wall outlet and connect the other end to the power cable included with the purchase of select portable ice kits.



BUNDLES:

LiveScope Plus Ice Fishing Bundle LI	010-02688-35	\$3,299.99
LiveScope Ice Fishing Bundle	010-02688-30	\$2,849.99
LiveScope Ice House System	020-00332-00	\$4,599.99
Panoptix PS22-IF Ice Fishing Bundle	010-02334-20	\$1,899.99
ECHOMAP UHD2 73cv Ice Bundle/GT10HN-IF	010-02334-15	\$899.99
Echomap UHD2 53cv Ice Fishing Bundle/DB-IF	010-02590-35	\$349.99
STRIKER™ Plus 4 Ice Fishing Bundle/ GT8HW-IF	010-01870-30	\$299.99

KITS:

Livescope Plus Ice Fishing Kit	010-02706-30	\$1,999.99
Panoptix PS22-IF Ice Fishing Kit	010-12676-60	\$1,249.99
Large Ice Fishing Kit w/ GT10HN-IF	010-12676-00	\$399.99
Small Ice Fishing Kit w/ GT8HW-IF	010-12462-10	\$199.99

TRANSDUCERS:

LiveScope System	010-01864-00	\$1,499.99
Replacement LiveScope LVS32-IF	010-12784-10	\$999.99
Livescope LVS34-IF Transducer	010-02706-20	\$1,099.99
Panoptix PS22-IF Transducer	010-01945-10	\$1,099.99
GT10HN-IF Ice Transducer – 8-pin – 7-16° Cone Angle	010-12677-00	\$169.99
GT8HW-IF Ice Transducer – 4-pin – 16-24° Cone Angle	010-12401-20	\$119.99
Dual Beam-IF Transducer – 4-pin – 15 or 45° Cone Angle	010-13069-00	\$79.99

ACCESSORIES:

Extra-large Portable Kit Bag, Base and Handle	010-12676-05	\$199.99
Panoptix Ice Pole Mount	010-12676-10	\$99.99
Small Portable Kit Soft Carrying Case – bag only	010-11849-05	\$34.99
Small Portable Kit Base and Handle – no bag	010-11849-08	\$14.99
PS22 Trolling Motor Shaft Mount	010-12407-00	\$24.99
Transducer Lens for Panoptix PS22-IF Transducer	010-12676-61	\$19.99
LiveScope Transducer Trolling Motor Shaft Mount – Std 8° tilt	010-12784-01	\$24.99
LiveScope Transducer Ice Pole Mount – 0° tilt	010-12676-15	\$24.99

POWER CABLES/BATTERY:

12Ah Lead-acid Battery	010-12676-30	\$69.99
Replacement Lithium-ion Battery Charger	010-13140-11	\$54.99
ECHOMAP PS22 Ice Bundle Power Cable	010-12676-35	\$39.99
ECHOMAP LiveScope/PS22 Ice Bundle Power Cable	010-12676-40	\$54.99
ECHOMAP STRIKER 12-volt Vehicle (CLA) Power Cable	010-12931-00	\$39.99
Lead-acid Battery Charger	010-12676-45	\$34.99

BAIL MOUNT AND QUICK-RELEASE CRADLES:

ECHOMAP UHD2 9xsv	010-12673-03	\$59.99
ECHOMAP UHD2 7xsv	010-13115-11	\$124.99
ECHOMAP UHD2 5xsv	010-12439-01	\$19.99
ECHOMAP Plus 4xcv	010-12199-03	\$24.99

CABLE ADAPTORS:

4-pin Transducer to 12-pin Sounder – GT8 to 7X/9XSV	010-12718-00	\$17.99
8-pin Transducer to 4-pin Sounder – GT10 to STRIKER/6X/4X	010-12719-00	\$17.99
4-pin Transducer to 8-pin Sounder – GT8 to 7X/9XCV	010-12721-00	\$17.99
8-pin Transducer to 12-pin Sounder – GT10 to 7X/9XSV	010-12122-10	\$19.99

SUN COVERS:

ECHOMAP UHD2 9sv Protective Cover	010-13116-04	\$19.99
ECHOMAP UHD2 7sv Protective Cover	010-13116-03	\$19.99
ECHOMAP UHD2 6sv Protective Cover	010-13116-02	\$19.99
STRIKER 5" Protective Cover	010-13116-00	\$19.99

SUMMER KITS – BOAT MOUNT, TRANSDUCER AND POWER CABLE:

LiveScope™ Boat Kit	020-00200-24	\$124.99
ECHOMAP UHD2 7xsv Boat Kit	020-00200-30	\$499.99
ECHOMAP UHD2 9xsv Boat Kit	020-00200-31	\$599.99

