

JUNE 2026 MARINE SOFTWARE UPDATE



In an ongoing effort to improve our products and provide enhanced features to existing users, we are excited to announce the Q3 2026 marine software update. This update provides improved functionality and new features throughout our marine systems.

The preferred update method is a free download using the ActiveCaptain® mobile app or from a computer with Garmin Express™ software. A preloaded update card is also available for purchase and will be shipped directly from Garmin. Click [here](#) for all update methods.

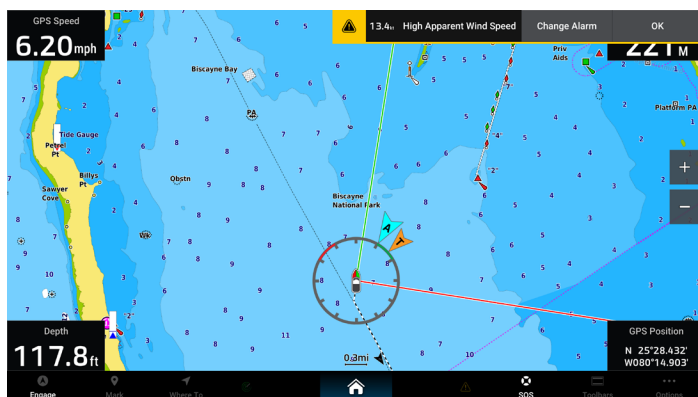
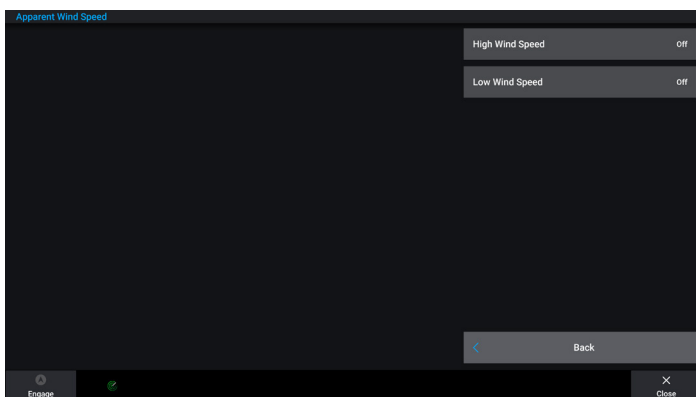
For the most up-to-date chart data available, visit our [chart update page](#) or check the [marine support](#) section on Garmin.com to find information on updating your device's charts, or tap the **Download Charts** option from the ActiveCaptain app to see what's available. For more information on available marine charts, visit our [marine chart viewer](#).

NEW FEATURES

Notable features in this software release include:

SAILING FEATURES: BASIC WIND ALARM

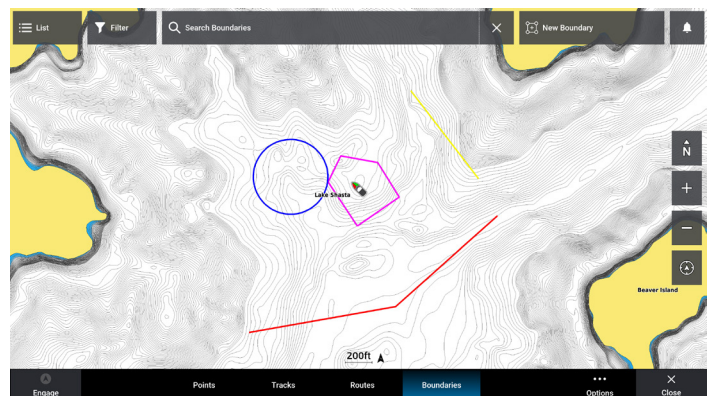
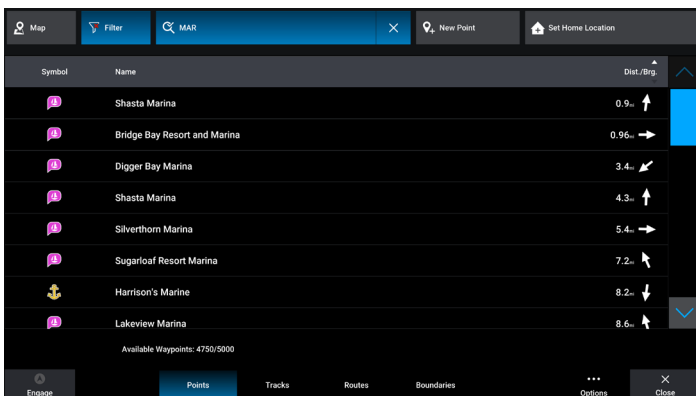
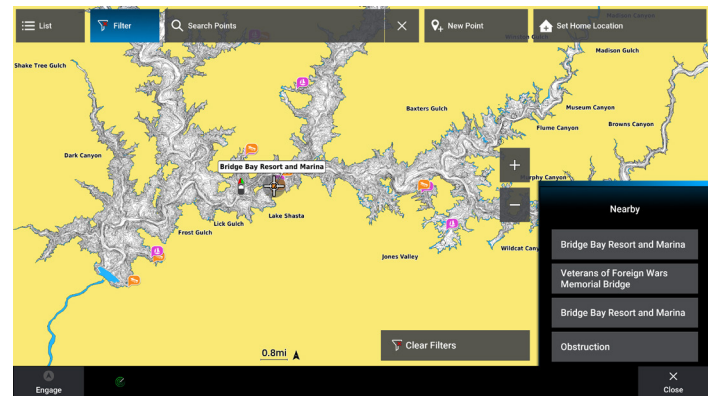
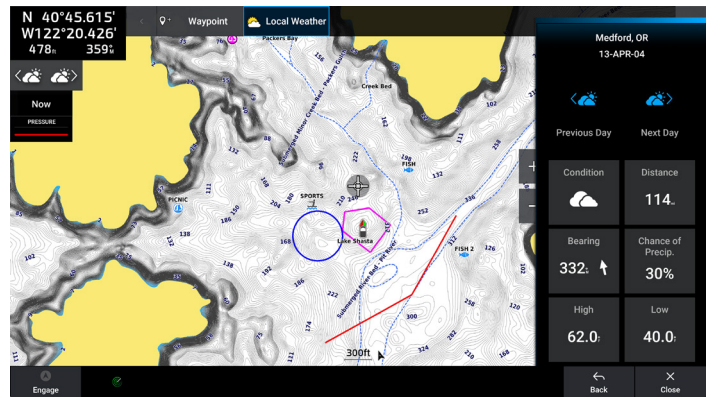
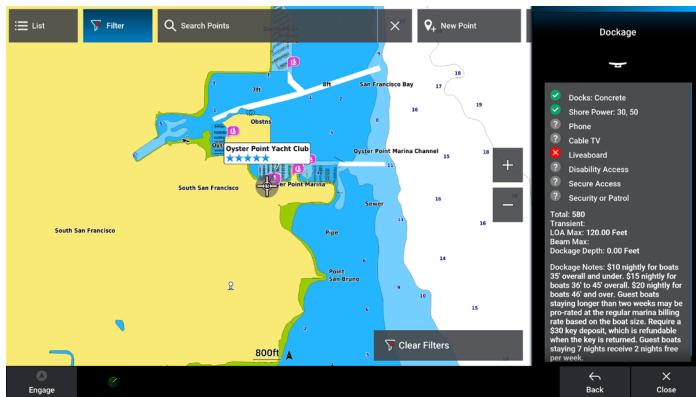
- The Wind alarm is a simple, user-configurable feature to alert the user of changes in wind speed (high or low).
 - **Settings > Alarms > Wind > True Wind/Apparent Wind Speed**
- Alarm options will include High Wind Speed and Low Wind Speed alarms, configurable to use True Wind or Apparent Wind Speed.



JUNE 2026 MARINE SOFTWARE UPDATE

GARMIN USER INTERFACE: USER DATA REVIEW PAGES, WHERE TO?

The new Where To page allows a simplified review and search of user data, including Tracks, Routes, Waypoints and Boundaries. Improvements include improved search functionality, Map and List view, Go Home, Save and Clear Tracklog, etc. The improved review panels are now accessible from multiple pages.

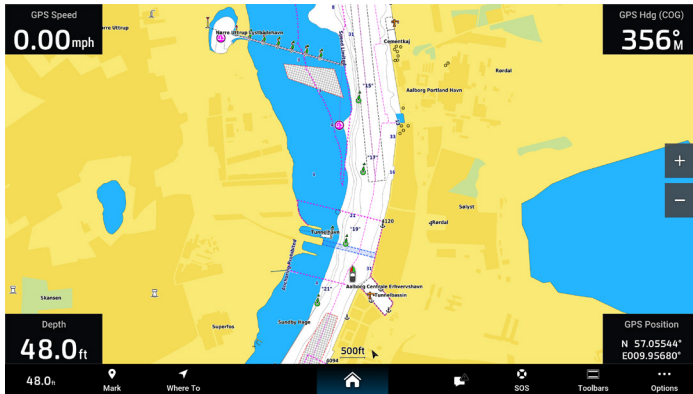


JUNE 2026 MARINE SOFTWARE UPDATE

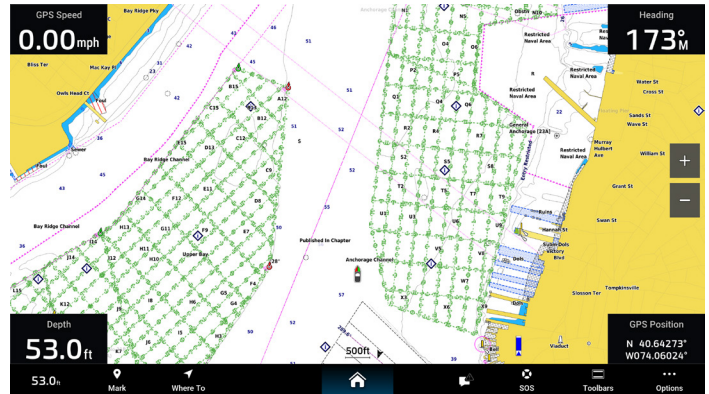
PRESENTATION EVOLUTION: DAY MODE IMPROVEMENTS

Software updates for the ActiveCaptain® app and Garmin MFDs support Garmin Navionics+™ map updates, including:

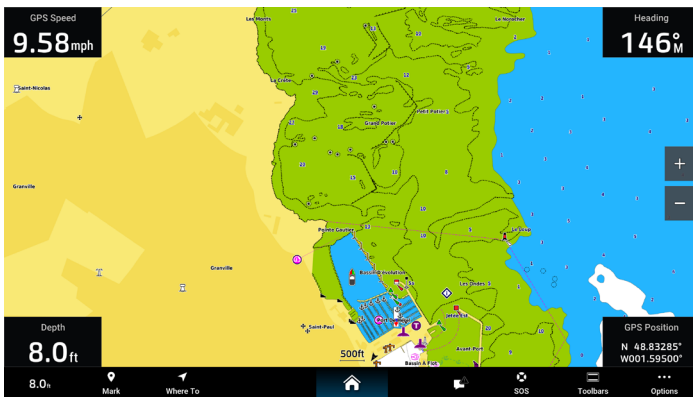
- Color changes that further align the presentation of charts across chart product lines.
- A new toggle for underwater cables and pipes in the chart layers menu.
- Support for new chart features that require a map update, such as built-up areas that provide context to boaters.



Built-up Areas



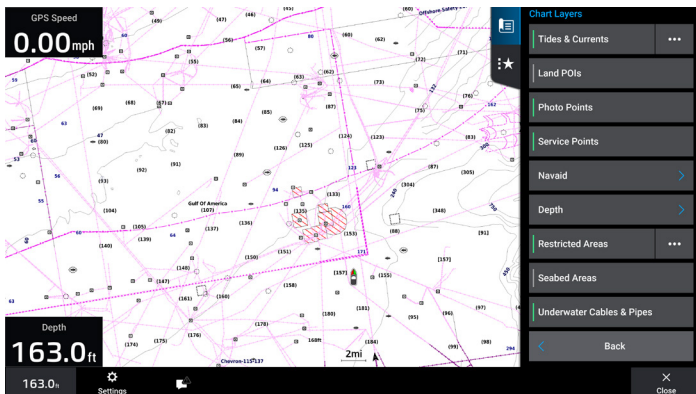
Anchorage Areas and Shoreline Construction



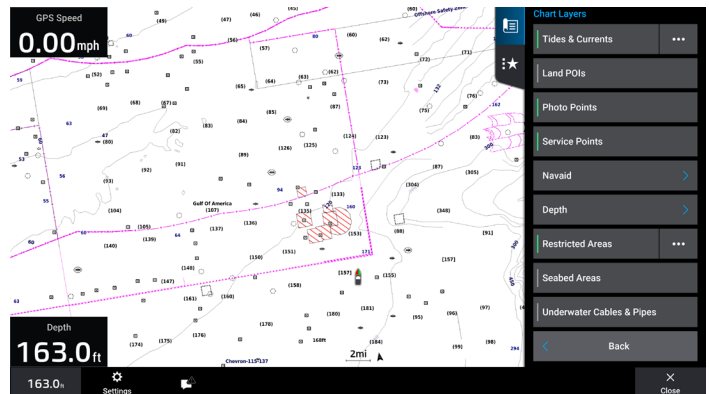
Intertidal Rocky Areas



Submerged Features



Underwater Cables and Pipes On



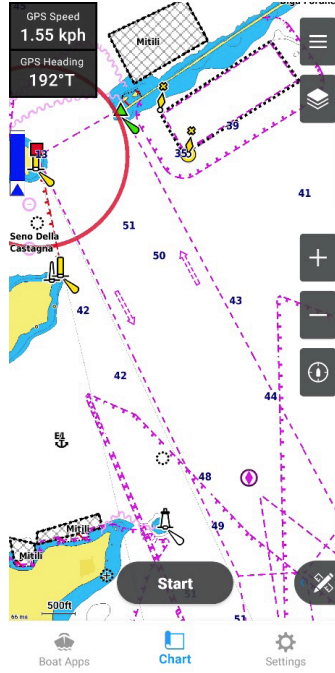
Underwater Cables and Pipes Off

JUNE 2026 MARINE SOFTWARE UPDATE

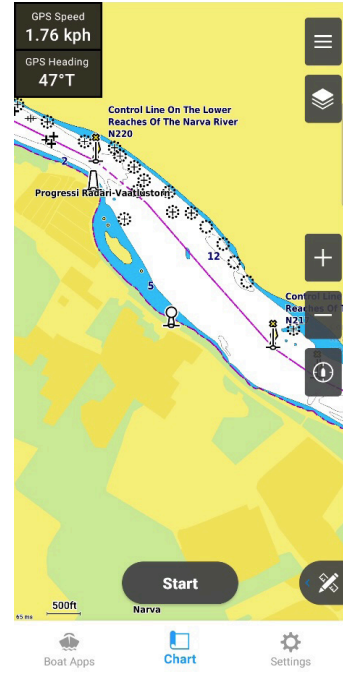
PRESENTATION EVOLUTION: DAY MODE IMPROVEMENTS CONTINUED



Vegetation



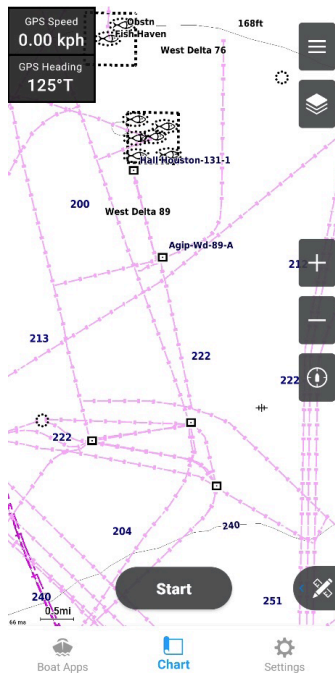
Traffic Direction Arrows



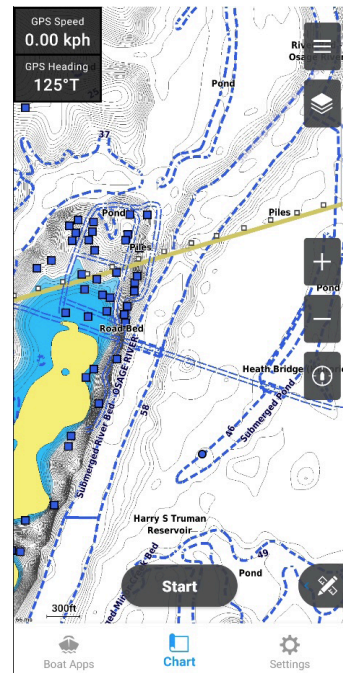
Built-up Areas



Intertidal Rocky Areas



Submerged Cable

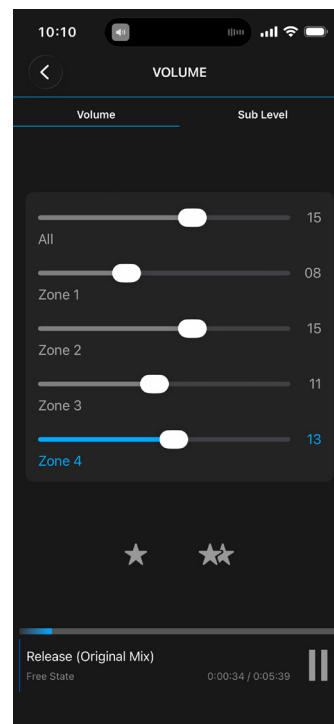
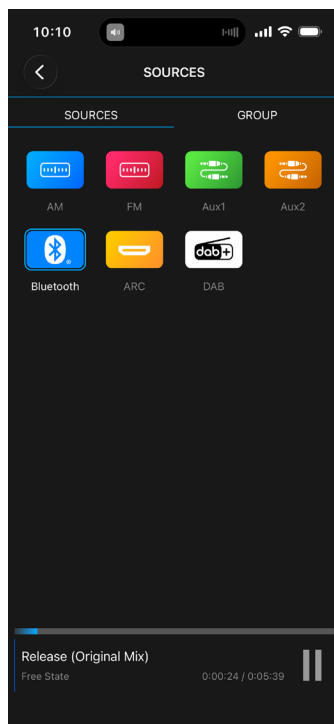
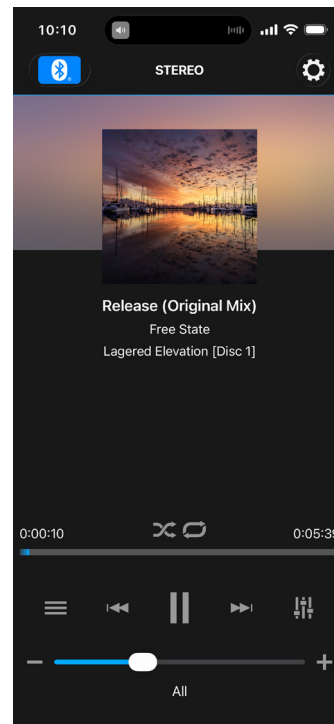


Submerged Objects

JUNE 2026 MARINE SOFTWARE UPDATE

GARMIN AUDIO™ MOBILE APP

The Fusion® Audio app has been rebranded as the Garmin Audio app. The main updates include a UI and app icon color change from green to blue. Core app functionalities remain the same, including wireless audio control, DSP setup and the ability to perform software updates.



JUNE 2026 MARINE SOFTWARE UPDATE

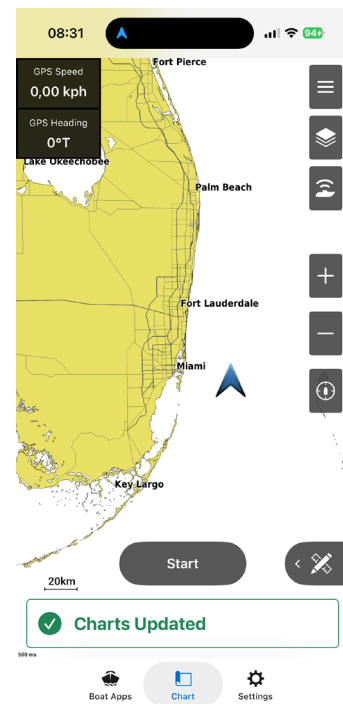
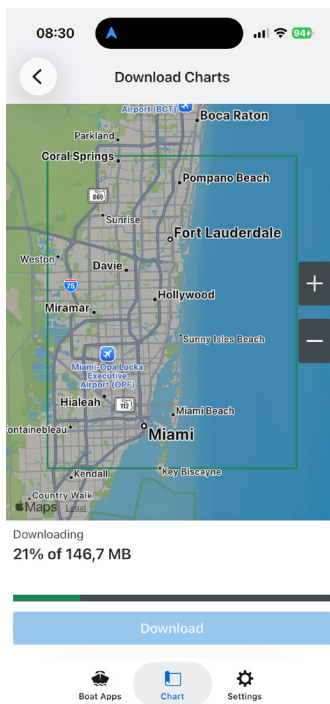
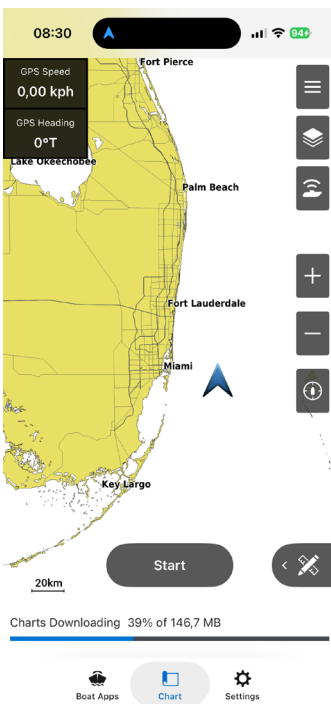
ACTIVECAPTAIN® IMPROVEMENTS

Transfer status improvements:

- While transferring data from the app to the chartplotter, the total size of the transfer is displayed along with the progress percentage.
- In the Android™ app, a new user notification is posted if the battery runs low while the app is transferring data in the background.
- For some transfer error types, there is now an extra page that explains the transfer error in more detail.

Downloads banner improvements:

- The notification informing the user that the chart update was completed has been redesigned.
- While chart data is being downloaded, a banner on the main chart informs the user of the download size and progress percentage.

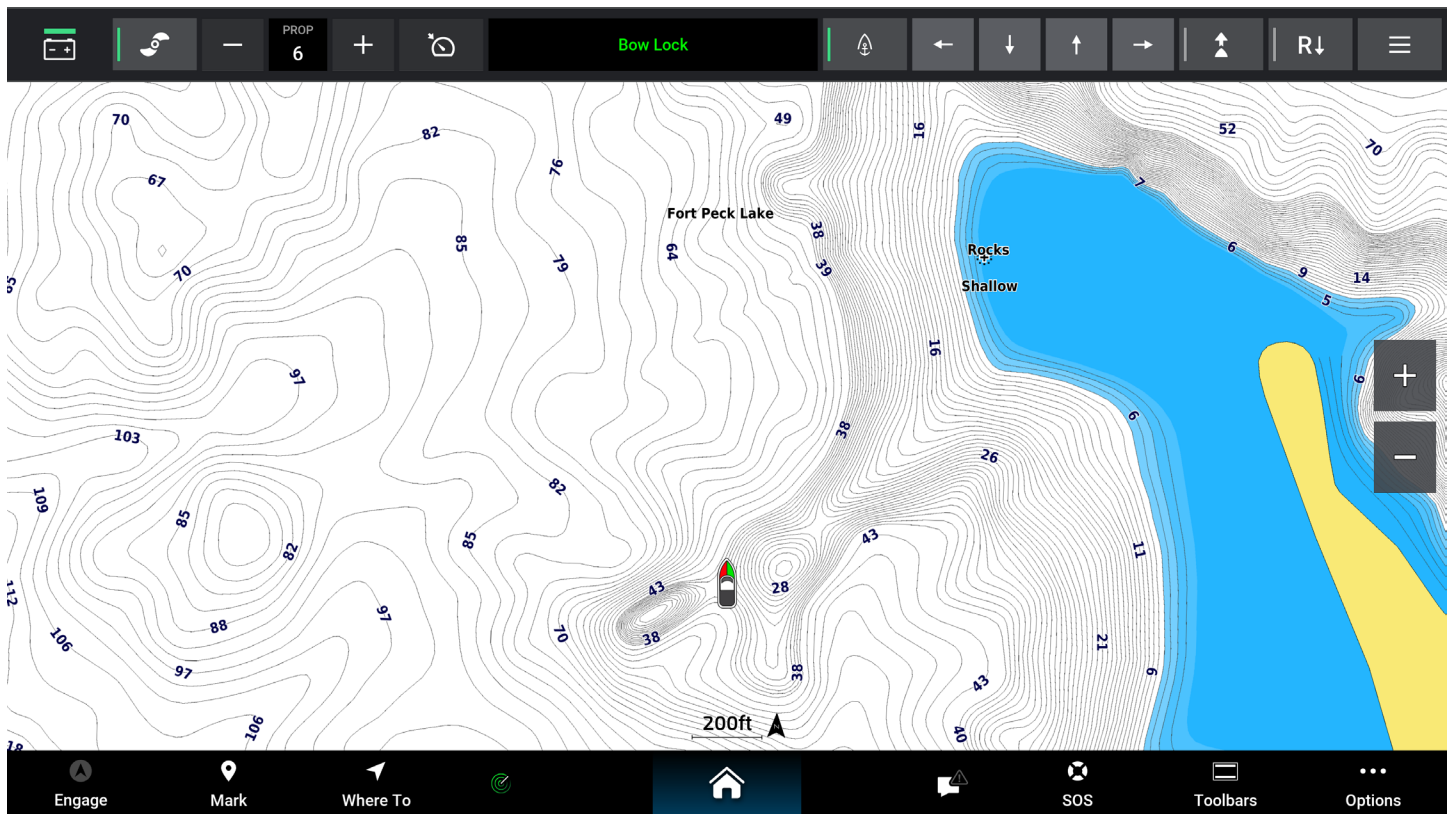


JUNE 2026 MARINE SOFTWARE UPDATE

FORCE® CURRENT TROLLING MOTOR BOW LOCK

Garmin has introduced Bow Lock, a new Anchor Mode for Force Current that provides enhanced positioning on kayaks.

- Bow Lock will anchor the bow of the kayak in place and naturally positions the kayak facing into the wind or current.
- Traditional Anchor Lock will continue anchoring the stern of the kayak and positions the kayak facing downwind or down current.
- The Trolling motor remote and MFD toolbar will display the anchor mode and will now allow the programable remote keys to switch between Bow Lock and Anchor Lock.



JUNE 2026 MARINE SOFTWARE UPDATE

FORCE® CURRENT CHARTPLOTTER INTEGRATION UPDATES

Features added to the trolling motor menu as part of the Force Current chartplotter updates include:

Autopilot Beeps:

- Enable/Disable the trolling motor beeps related to autopilot engage modes.

Battery Chemistry:

- Allows the user to select the type of battery that the trolling motor is using.

Programmable Keys:

- Allows the keys on the left and right pedals to be configured the same way as the trolling motor remote.
 - None
 - Anchor Lock
 - Heading Hold
 - Mark Waypoint



JUNE 2026 MARINE SOFTWARE UPDATE

MSC™ 10 MARINE SATELLITE COMPASS AUTO CALIBRATION

The MSC 10 will now automatically calibrate its backup magnetic heading sensor using the data from the satellite compass as the user drives around. The manual calibration procedure is still available, and it will override the automatic calibration data.

RADAR: TRUE MOTION AND STABILIZATION

A new North Up True Motion option has been added under **Radar Menu > Radar Setup > Orientation**.

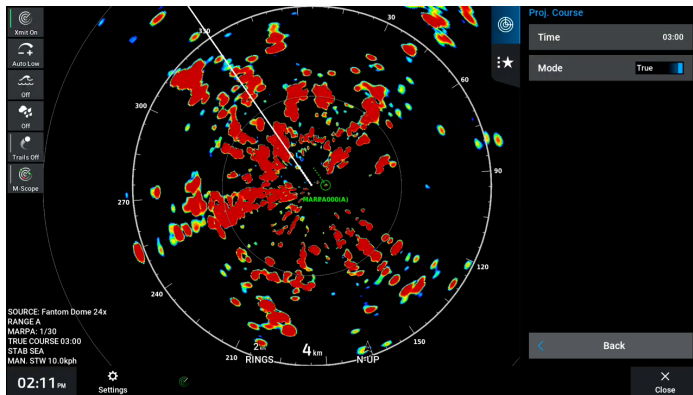
- This option is unlike the existing Relative Motion radar display, which keeps the own ship fixed at the center of the screen. With North Up True Motion enabled, the own ship moves across the radar display while stationary objects remain fixed. This makes it easier to understand the vessel's movement relative to land and other targets.

A new Stabilization menu has been added under **Radar Menu > Radar Setup**:

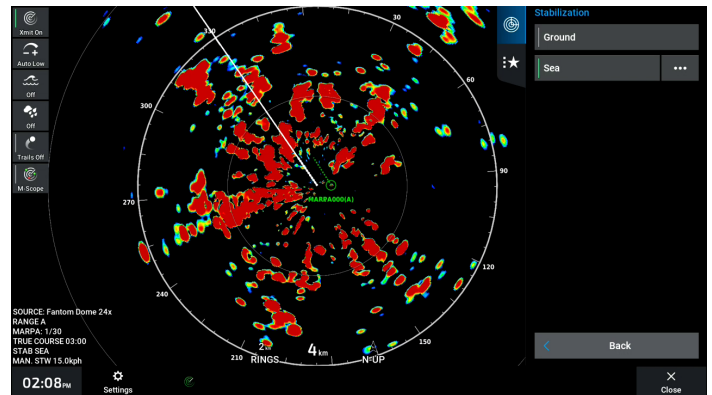
- It allows configuring the course and speed sources used for movement calculation for the own ship and other targets (MARPA/AIS), with two stabilization options: Ground and Sea.
- For Gound Stabilization, COG (Course Over Ground) and SOG (Speed Over Ground) are used.
- For Sea Stabilization, Heading and STW (Speed Through Water) are used, and a Manual Water Speed settings page is provided to allow manual STW entry when needed.

A new toggle button has been added under **Nav. Chart / Radar Menu > Other Vessels > Proj. Course**.

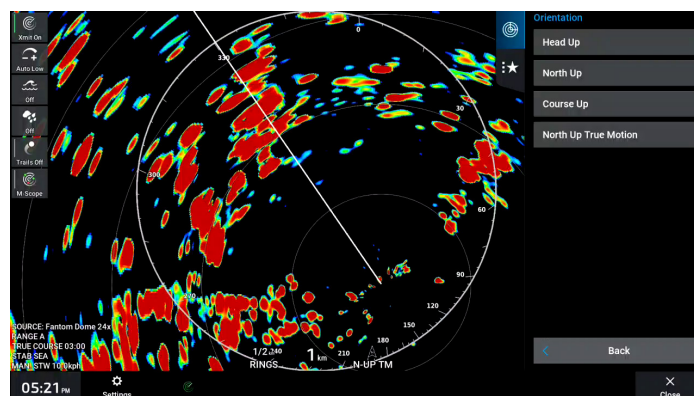
- It allows switching between true and relative projected course line calculations for other targets (MARPA/AIS).
- True projected course is calculated using the acquired MARPA/AIS target's course and speed.
- Relative projected course is calculated using the relative course and speed between the own ship and the acquired MARPA/AIS target.



Projected Course



Stabilization



True Motion Orientation

JUNE 2026 MARINE SOFTWARE UPDATE

DIGITAL SWITCHING PLATFORM IMPROVEMENTS

This software update includes the following digital switching improvements:

Lumishore® Multi-Zone™ Lighting Feedback (MCUv2, SERV+™, Connect50, Connect50v2, ConnectHPR):

It is now possible to determine if all Lumishore lighting zones are currently set to the exact same state.

Timberline Heating Integration (Connect50v2, SERV):

Supports native integration of both the 1-Series and 2-Series Timberline Heating modules.

Reverso Flushing Integration (MCUv2, Connect50v2):

Supports integration of the Reverso Automatic Outboard Flushing System.

SAE J1939 PGN Integrations (MCUv2, Connect50, Connect50v2 now support the following J1939 PGNs over J1939):

65007: Generator Average AC RMS Information

65010: Generator Total Real Power

65016: AC Output Status

65013: AC Input Status

NMEA 2000® PGN Integrations (digital switching products now support receiving following NMEA 2000 PGNs over N2K):

127493: Transmission Parameters, Dynamic (MCUv2, SERV+, Connect50, Connect50v2)

128006: Thruster Control Status (MCUv2, Connect50v2)

128008: Thruster Motor Status (MCUv2, Connect50v2)

128275: Distance Log (MCUv2, Connect50v2)

128776: Windlass Control Status (MCUv2, Connect50v2)

128777: Anchor Windlass Operating Status (MCUv2, Connect50v2)

128778: Anchor Windlass Monitoring Status (MCUv2, Connect50v2)

128793: Instrument Backlight Synchronization (MCUv2, SERV+, Connect50v2)

130567: Watermaker Input Setting and Status (MCUv2, Connect50v2)

Logix Component Library Additions (the following components in the Logix tool have been added for custom configurations):

Value Update Filter: Allows sending a single pulse whenever an input value changes (MCUv2, Connect50, Connect50v2, SERV+).

Bit Counter: Counts the number of active bits from any supported data type (MCUv2, Connect50, Connect50v2, SERV+, Connect-HPR).

JUNE 2026 MARINE SOFTWARE UPDATE

COMPATIBILITY

	GPSMAP® 9000 (19–27")	GPSMAP 9000xsv (10–17")	GPSMAP 9500 Black Box	GPSMAP 8600xsv (10–16")	GPSMAP 7x3/9x3 /12x3/15x3/16x3	TD 50	ECHOMAP™ ULTRA 2 (10/12/16")	ECHOMAP UHD2 (6/7/9" Touch)	ECHOMAP UHD2 (5/7" Key)
SAILING FEATURES: BASIC WIND ALARM	●	●	●	●	●	●	●	●	
GARMIN USER INTERFACE: USER DATA REVIEW PAGES, WHERE TO?	●	●	●	●	●	●	●	●	●
PRESENTATION EVOLUTION: DAY MODE IMPROVEMENTS	●	●	●	●	●	●	●	●	●
GARMIN AUDIO™ MOBILE APP	Available Using the New Garmin Audio App								
ACTIVECAPTAIN® IMPROVEMENTS	Available Using the Current ActiveCaptain App								
FORCE® CURRENT TROLLING MOTOR BOW LOCK	●	●	●	●	●		●	●	
FORCE® CURRENT CHARTPLOTTER INTEGRATION UPDATES	●	●	●	●	●		●	●	
MSC™ 10 MARINE SATELLITE COMPASS AUTO CALIBRATION	Available Using the Updated MSC 10 Software								
RADAR: TRUE MOTION AND STABILIZATION	●	●	●	●	●	●			

Android is a trademark of Google LLC. NMEA®, NMEA 2000®, and the NMEA 2000 logo are registered trademarks of the National Marine Electronics Association.

Engineering enhancements are ongoing and may not be reflected in the pictures, screenshots and specifications.