

JANUARY 2025 MARINE SOFTWARE UPDATE



In an ongoing effort to improve our products and provide enhanced features to existing users, we are excited to announce the Q1 2025 marine software update. This update provides improved functionality and new features throughout our marine systems.

The preferred update method is a free download using the ActiveCaptain® mobile app or from a computer with Garmin Express™ software. A preloaded update card is also available for purchase and will be shipped directly from Garmin. Click [here](#) for all update methods.

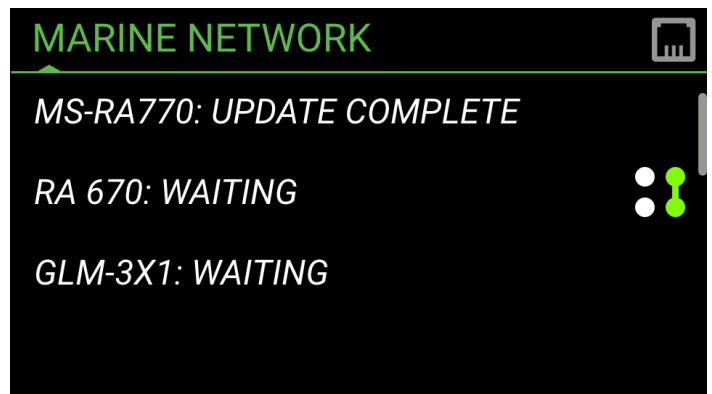
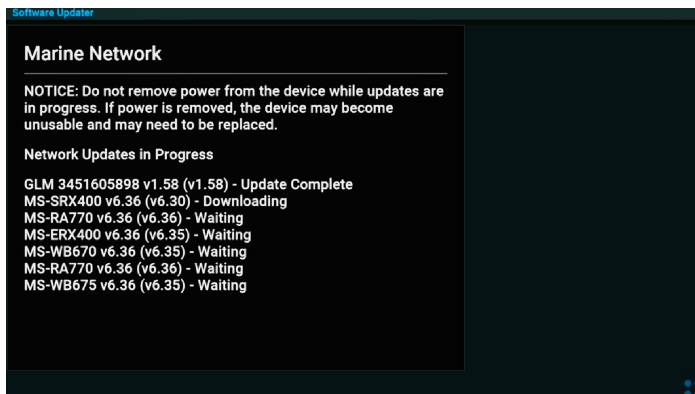
For the most up-to-date chart data available, visit our [chart update page](#) or check the [marine support](#) section on Garmin.com to find information on updating your device's charts, or tap the **Download Charts** option from the ActiveCaptain app to see what's available. For more information on available marine charts, visit our [marine chart viewer](#).

NEW FEATURES:

Notable features in this software release include:

FUSION® SOFTWARE UPDATE VIA CHARTPLOTTER

Fusion stereo and Garmin Spectra™ lighting controller software updates are included in the marine software bundle. This update makes it possible for customers to update those devices via their networked Garmin chartplotter using an SD card or the ActiveCaptain app.

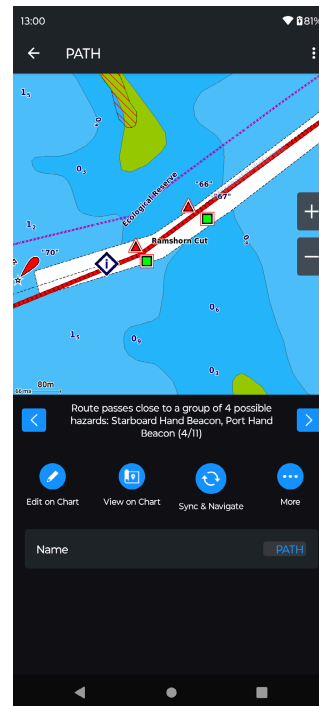


JANUARY 2025 MARINE SOFTWARE UPDATE

AUTO GUIDANCE+™ IMPROVEMENTS IN ACTIVECAPTAIN® APP

This update improves the user experience when reviewing hazards in their Auto Guidance+ suggested paths.

- Hazards close to each other are grouped and sorted from start position to the end of the route.
- The user is notified if they use expired charts for the Auto Guidance+ calculation.

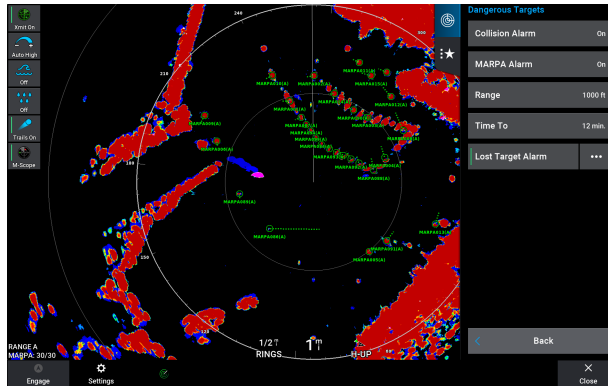


JANUARY 2025 MARINE SOFTWARE UPDATE

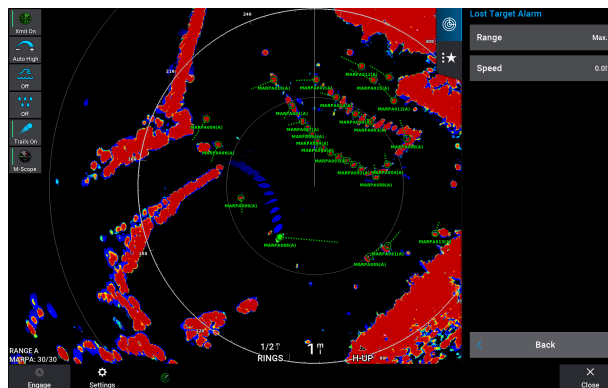
MARPA ALARM IMPROVEMENTS

This update improves MARPA alarms by:

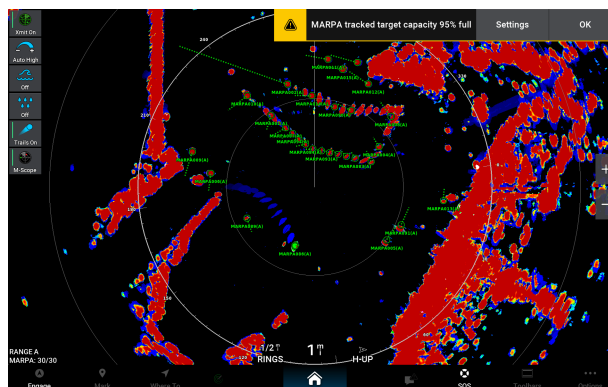
- Adding a more accessible option to enable or disable the Lost Target Alarm from the top level of the Dangerous Target menu (formerly called Collision Alarm menu).
- Adding the ability to limit Lost Target Alarms based on target range or speed.
- Adding a new target capacity warning that alerts you when your list of MARPA or AIS targets is 95% full.



Lost Target Alarm Toggle



Options To Trigger Lost Target



Target Capacity Alarm

JANUARY 2025 MARINE SOFTWARE UPDATE

COMPATIBILITY:

	GPSMAP® 9000 (19"–27")	GPSMAP 9500 Black Box	GPSMAP 8600 (17"–24")	GPSMAP 8600xsv (10"–16")	GPSMAP 8700 Black Box	GPSMAP 7x3/9x3 /12x3/16x3	GPSMAP 10x2/12x2 (Key)	TD 50	ECHOMAP™ ULTRA 2 (10/12")	ECHOMAP UHD2 (6/7/9" Touch)	ECHOMAP UHD2 (5/7" Key)
FUSION® SOFTWARE UPDATE VIA CHARTPLOTTER	●	●	●	●	●	●	●				
AUTO GUIDANCE+™ IMPROVEMENTS IN ACTIVECAPTAIN® APP	Available with the Current ActiveCaptain App										
MARPA ALARM IMPROVEMENTS	●	●	●	●	●	●	●	●			