

APRIL 2025 MARINE SOFTWARE UPDATE



In an ongoing effort to improve our products and provide enhanced features to existing users, we are excited to announce the Q2 2025 marine software update. This update provides improved functionality and new features throughout our marine systems.

The preferred update method is a free download using the ActiveCaptain® mobile app or from a computer with Garmin Express™ software. A preloaded update card is also available for purchase and will be shipped directly from Garmin. Click [here](#) for all update methods.

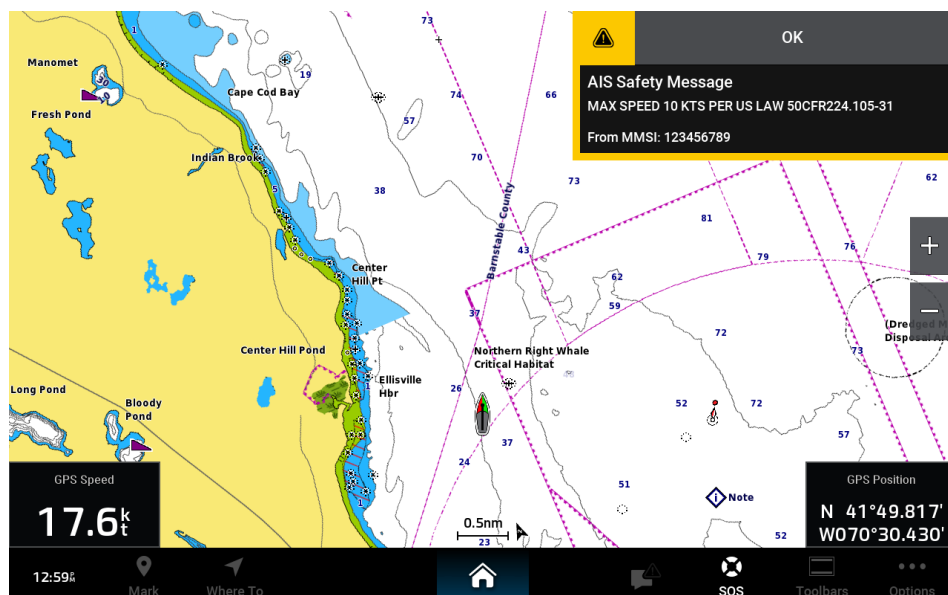
For the most up-to-date chart data available, visit our [chart update page](#) or check the [marine support](#) section on Garmin.com to find information on updating your device's charts, or tap the **Download Charts** option from the ActiveCaptain app to see what's available. For more information on available marine charts, visit our [marine chart viewer](#).

NEW FEATURES

Notable features in this software release include:

AIS WARNINGS FOR OBJECT AVOIDANCE

Chartplotters will now display broadcast and addressed 12/14 AIS safety messages when received on a connected AIS-capable device. These messages are used by licensed AIS broadcasters to send text messages to boaters within the range of floating objects as well as North Atlantic right whale seasonal and dynamic management areas. This release builds upon Garmin's effort to improve visibility of seasonal and dynamic management areas that are already displayed on Garmin Navionics+™ and Garmin Navionics Vision+™ charts.



APRIL 2025 MARINE SOFTWARE UPDATE

PRESENTATION EVOLUTION – NAVAIDS

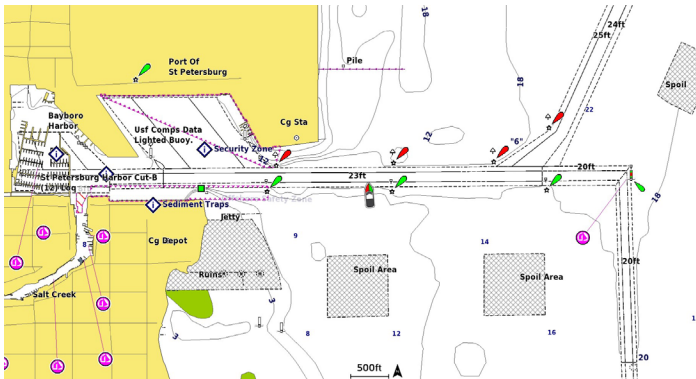
These updates will be available for Garmin Navionics+™ and Garmin Navionics Vision+™ charts on Garmin chartplotters and in the ActiveCaptain® app. Most of these changes require customers with active marine chart subscriptions to access the updated content via the ActiveCaptain app or Garmin Express™ software. Updates are available now for North America and Europe; other regions will be released through late 2025.

Navaid Improvements

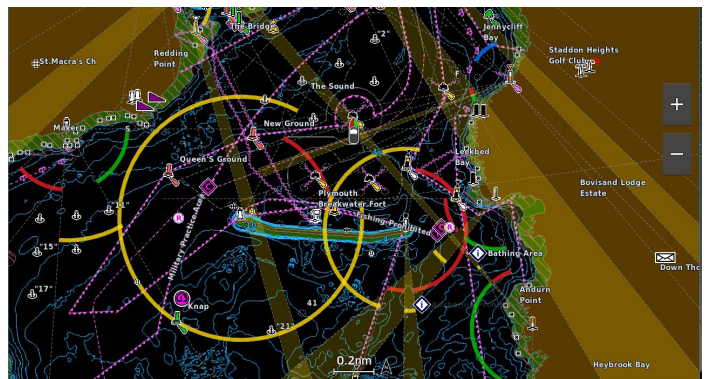
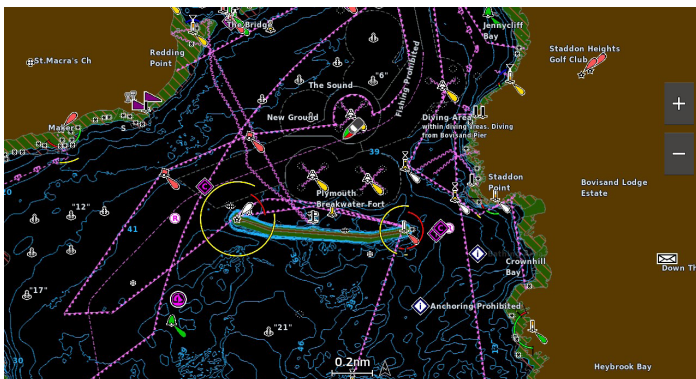
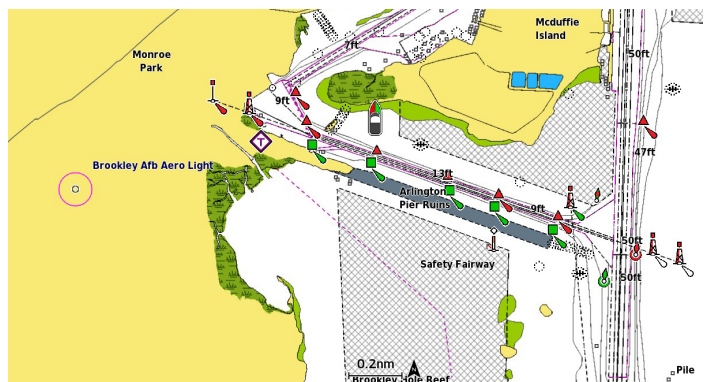
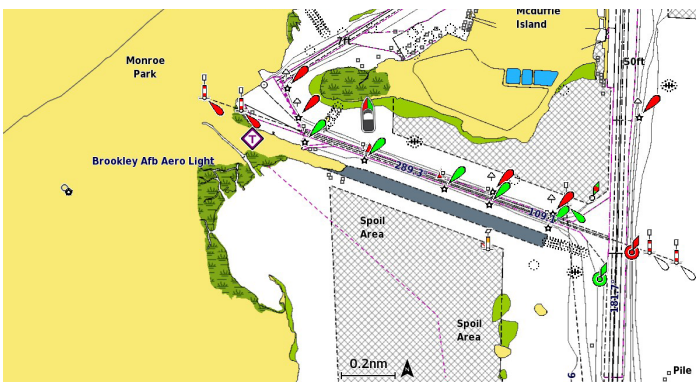
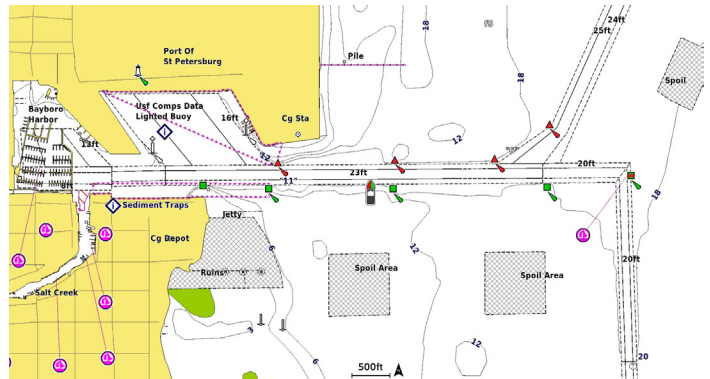
This software update enables presentation improvements for navigational aids (navaids).

- Redesigned symbols more closely match real-world shapes and colors with new indicators to represent common navaid features such as fog signals and spotlights.
- Light sectors have been modified for better visibility and scaling, and fairway highlighting has been added.
- Navigational hints have been added to the scan bubble and review page for common navaids to help boaters understand how to approach the feature.
- Navaids have been decluttered and prioritized so more important navaids will appear at expanded zoom levels.

Before



After



APRIL 2025 MARINE SOFTWARE UPDATE

FORCE® KRAKEN MOTOR – REVERSE THRUST

Force Kraken can now be manually operated in reverse mode — exactly like the recently released Force Pro. Quickly shift into reverse mode via the handheld remote, foot pedal or Garmin chartplotter to blow off vegetation, or apply thrust in reverse for enhanced boat control without spinning the motor around.

FORCE TROLLING MOTOR SOFTWARE UPDATES

Software updates from ActiveCaptain® mobile app:

- Software updates will now start installing immediately after being transferred from the ActiveCaptain mobile app. In the past, some updates required a power cycle.

Software updates from compatible Garmin chartplotters:

- Force trolling motor software updates will now be included within the Garmin marine software update bundles and shared over the chartplotter Wi-Fi® network. The Q2 2025 update makes it possible for users to update their compatible chartplotters and Force trolling motor simultaneously during future updates. The entire system of chartplotters and the trolling motor require the Q2 2025 update via the current update process to enable the new update process.

ADDING GRAPHS TO CUSTOM OEM COMBO PAGES FOR BOAT BUILDERS

Improvements include:

- Boat builder can now add graph gauges to Custom Combo and Custom Home.
- Each graph gauge option includes horizontal and vertical graphs in a predefined list of sizes: extra-small, small, medium, large and extra-large.
- This feature allows the boat builder to create a Custom Combo page or Custom Home that combines various graph gauges and other components to meet the specific needs of sailing.

Transparency On



Transparency Off

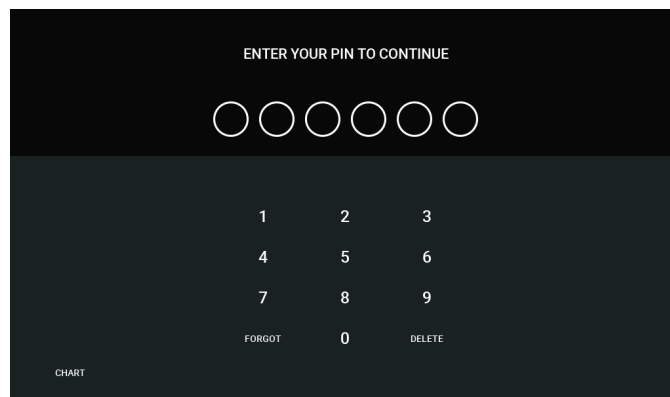
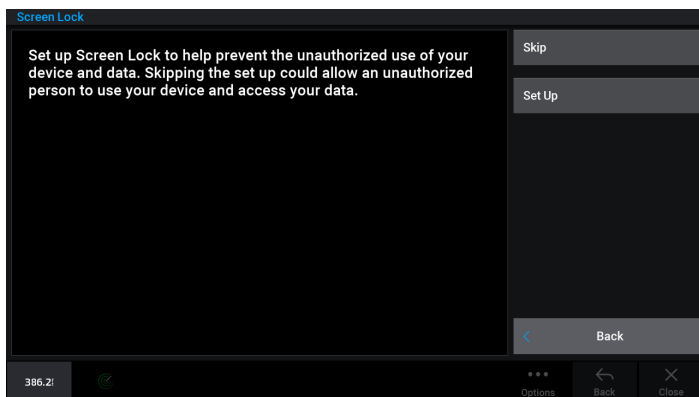


APRIL 2025 MARINE SOFTWARE UPDATE

PIN CODE UPDATES

Screen lock update improvements include:

- This update adds screen lock support to the ECHOMAP™ UHD2 and ECHOMAP Ultra 2 series chartplotters, GHC 50™ marine autopilot instruments and GPSMAP® 9000 series (Volvo Penta®) chartplotters. The screen lock allows the user to add a PIN code to their device to prevent unauthorized use of the device and data.
- Users can now configure screen lock during first-time setup.

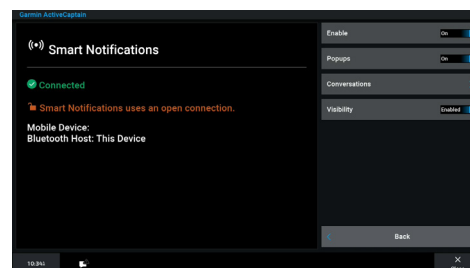
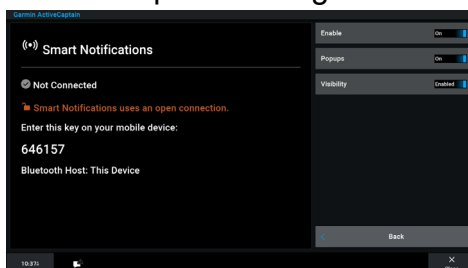
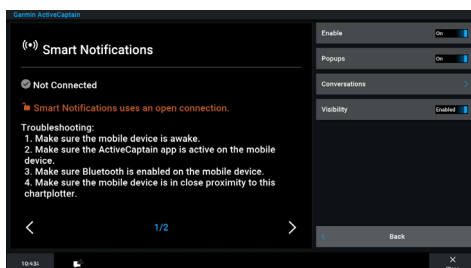


ACTIVECAPTAIN® AND INREACH® PAIRING UPDATES

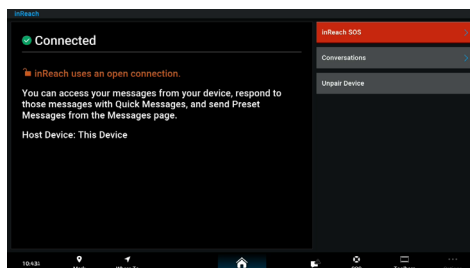
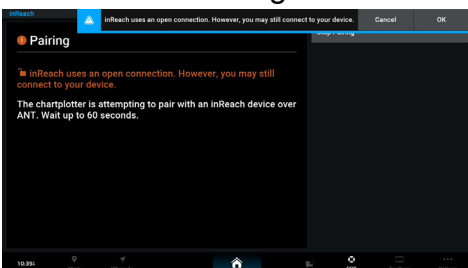
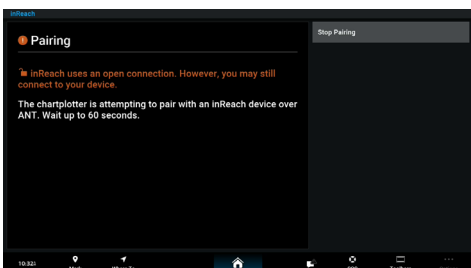
This update improves the following ActiveCaptain and inReach pairing process:

- The user is notified if the connection they are attempting to pair is “open,” meaning that the connection does not provide authentication and encryption.
- The chartplotter provides a persistent reminder to the user of the “open” connection for the duration of the pairing session.

ActiveCaptain Pairing Screens



inReach Pairing Screens



COMPATIBILITY

	GPSMAP® 9000 (19-27")	GPSMAP 9500 Black Box	GPSMAP 8600 (17-24")	GPSMAP 8600xsv (10-16")	GPSMAP 8700 Black Box	GPSMAP 7x3/9x3 /12x3/16x3	GPSMAP 10x2/12x2 (Key)	TD 50	ECHOMAP™ ULTRA 2 (10/12")	ECHOMAP UHD2 (6/7/9" Touch)	ECHOMAP UHD2 (5/7" Key)
AIS WARNINGS FOR OBJECT AVOIDANCE	•	•	•	•	•	•	•	•	•	•	
PRESENTATION EVOLUTION – NAVAIDS	•	•	•	•	•	•	•	•	•	•	•
FORCE® KRAKEN MOTOR – REVERSE THRUST	•	•	•	•	•	•	•	•	•	•	•
FORCE TROLLING MOTOR SOFTWARE UPDATES	•	•	•	•	•	•	•		•	•	•
ADDING GRAPHS TO CUSTOM OEM COMBO PAGES FOR BOAT BUILDERS	•	•	•	•	•	•	•	•			
PIN CODE UPDATES	•	•	•	•	•	•	•	•	•	•	•
ACTIVECAPTAIN® AND INREACH® PAIRING UPDATES¹	•	•	•	•	•	•	•		•	•	

¹Note: The Echomap UHD2 (6/7/9" Touch) devices do not pair with inReach satellite communicators.