

JULY 2023 MARINE SOFTWARE UPDATE

PRODUCT UPDATE



In an ongoing effort to improve our products and provide enhanced features to existing users, we are excited to announce the Q3 2023 marine software update. The update provides improved functionality and new features throughout our marine systems.

The preferred update method is a free download using the ActiveCaptain® mobile app or from a computer with Garmin Express™ software. A preloaded update card is also available for purchase and will be shipped directly from Garmin. Visit [here](#) for all update methods.

For the most up-to-date chart data available, visit our [chart update page](#) or [marinesupport.garmin.com](#) to find information on updating your device's charts, or tap the **Download Charts** option from the ActiveCaptain app to see what's available. For other options and more information on available marine charts, visit our [marine charts and maps webpage](#).

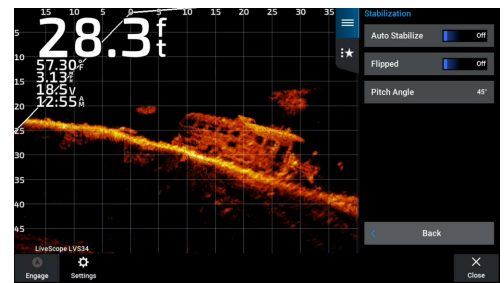
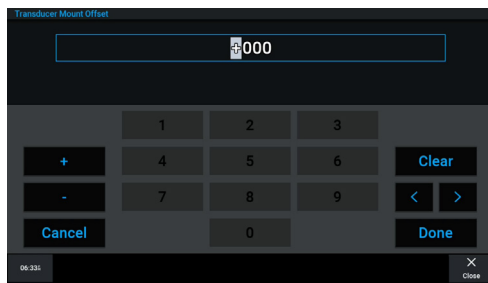
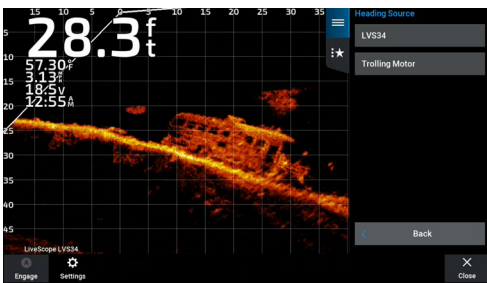
Please see below for a few featured highlights found in the update as well as a detailed reference table at the end of the document.

LiveScope™ Heading Sharing

This update allows a user who barrel mounts their LiveScope transducer on a Force® trolling motor to use the compass from the trolling motor for heading direction rather than the transducer compass. The close proximity to the trolling motor can sometimes disrupt the compass in the transducer; the user now has the option to use the compass from the trolling motor instead.

This update also includes a new entry page named Transducer Mount Offset. This feature can be used if the transducer is installed on the trolling motor at an angle. That is, the transducer is not aligned with the trolling motor's barrel. With this update, the user will be able to correct the transducer heading so it's aligned with the trolling motor's barrel.

Lastly, this feature renames the Use AHRS setting to Auto Stabilize. This setting has been moved to a new menu within the Installation menu called Stabilization. The Stabilization menu also contains the preexisting settings, Flipped, Pitch and Roll Angle.



Power-Pole® Advanced Boat Control

Currently, select Garmin chartplotters integrate with Power-Pole anchors to offer basic functionality — such as stow and deploy — from the plotter. This update will add four new advanced boat control features, creating a more holistic boat control “ecosystem.” So, anglers can spend more time fishing and less time positioning their boat. The four new features are as follows:

Smart Anchor Selection

Upon entering anchor lock, the chartplotter will detect the current water depth and automatically deploy Power-Pole shallow water anchors if the boat is positioned in water shallow enough to accommodate their anchors. The Power-Pole shallow water anchors will be used to hold the angler’s position rather than the trolling motor. If the water is too deep to accommodate Power-Pole shallow water anchors, the Force® Anchor Lock feature will hold the angler’s position.

Smart Anchor Jog

When using the trolling motor to jog, Power-Pole shallow water anchors will automatically stow, and the trolling motor will jog to its commanded position. The Smart Anchor selection will occur at the new commanded anchor position, which means the Power-Pole shallow water anchors will either redeploy to hold the angler’s position, or the Force Anchor Lock feature will engage.

Drag Detection

Using shallow water anchors, high winds, waves or currents will oftentimes cause an angler’s boat to drift off its desired location. With this feature, when drifting of the boat is detected by the Garmin chartplotter, the Power-Pole shallow water anchors will automatically stow, and the Force trolling motor will maneuver the boat back to its original anchoring position and redeploy the shallow water anchors.

End of Route

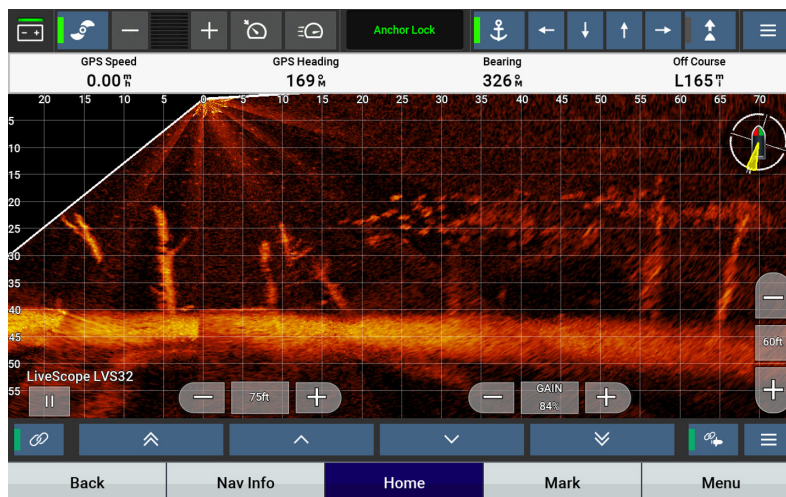
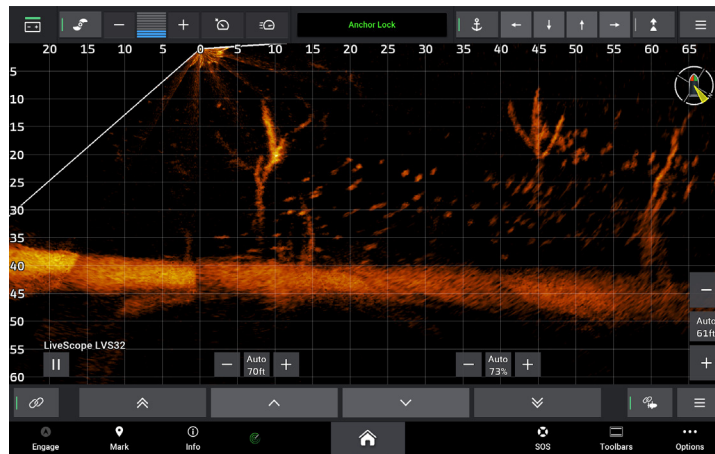
Currently, when an angler uses the route following feature with their Force trolling motor and compatible chartplotter, the trolling motor will automatically anchor lock when the angler reaches the end of their route. The new End of Route feature will use the Smart Anchor feature to detect the current water depth and automatically deploy Power-Pole shallow water anchors if the boat is positioned in water shallow enough to accommodate their anchors.

Auto Stow

Power-Pole shallow water anchors will automatically stow when the Force trolling motor is stowed.

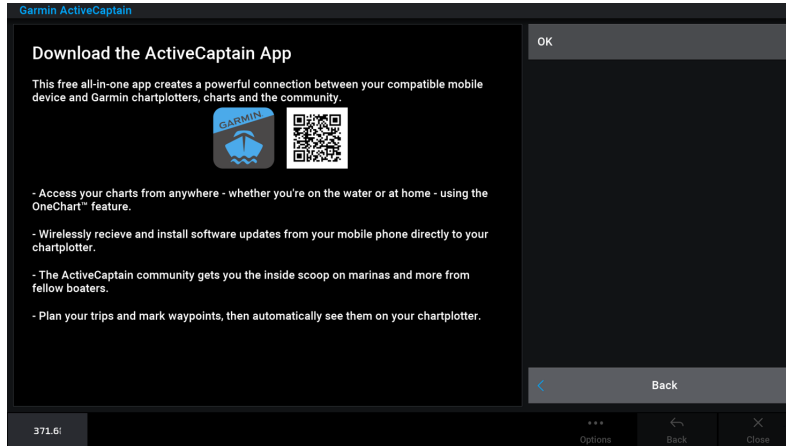
Notable items:

- These features are only compatible with dual Power-Pole anchor setups.
- Integration requires the purchase of a C-Monster GATEWAY through Power-Pole¹.



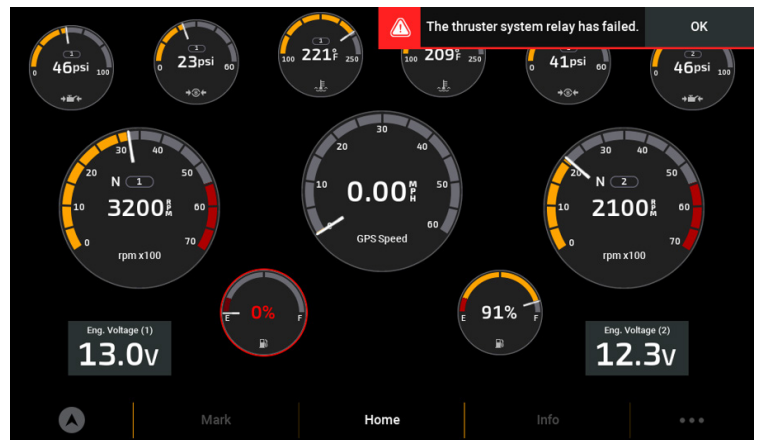
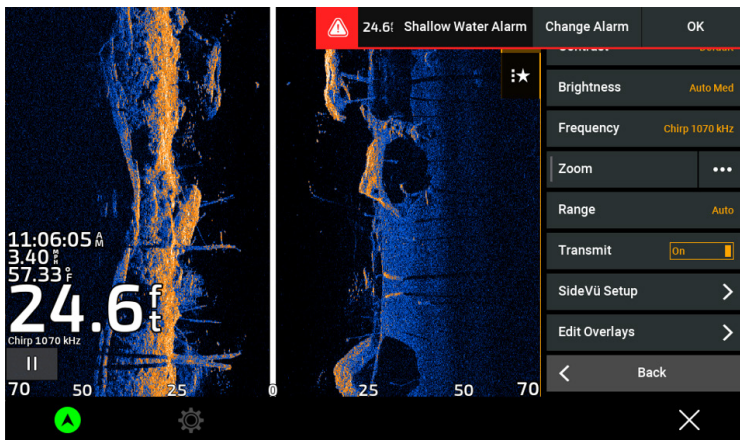
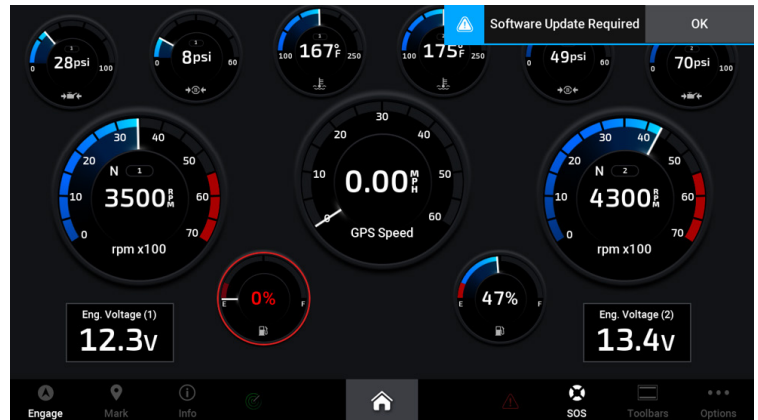
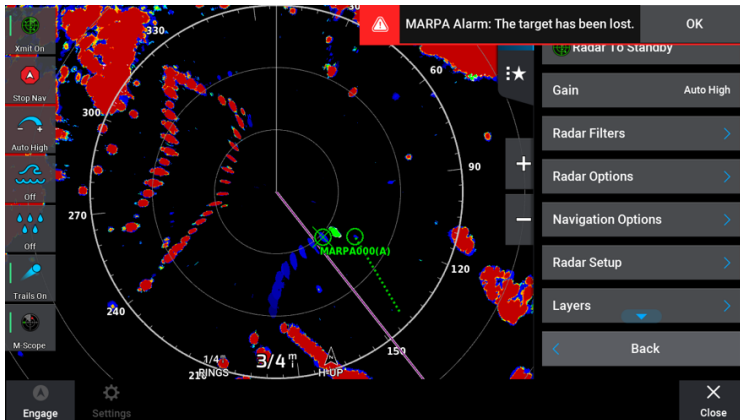
Chartplotter ActiveCaptain® App QR Code

This update adds a QR code to the chartplotter ActiveCaptain screen, allowing the customer an easy method to access and download the ActiveCaptain app. The free ActiveCaptain app creates a powerful connection between your compatible smart device and Garmin chartplotter, charts, maps and the boating community. Use it to activate your Garmin Navionics+™ or Garmin Navionics Vision+™ cartography subscription, plus download daily updates and premium content.



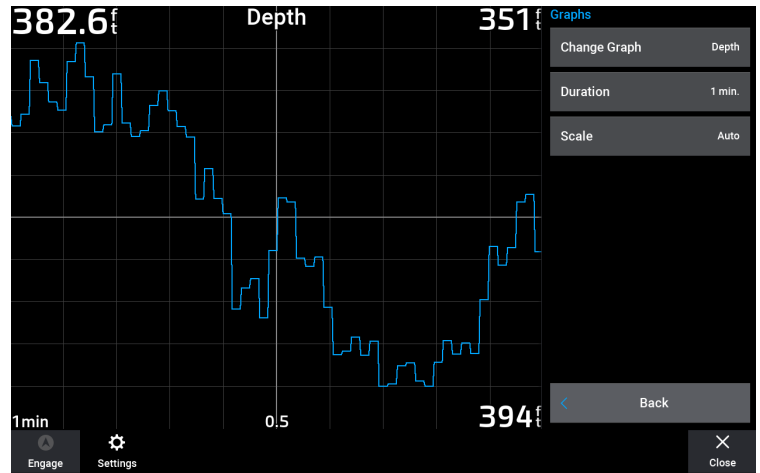
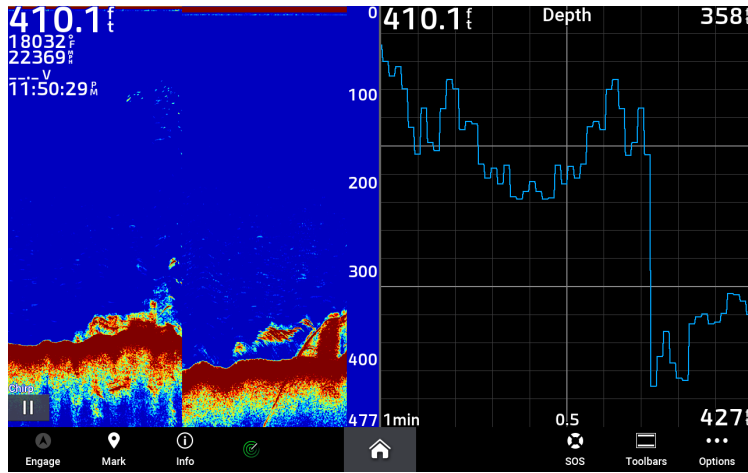
Chartplotter Message Banner and Pop-up Improvements

This update moves the pop-up banner location and adds dynamic sizing in order to reduce screen obstruction when they appear.



Trips and Graphs

With this update, trip data now has its own page instead of being stored solely within the information menu. This allows the data to be easily accessible and matches the design of other digital gauge pages. These features can be accessed from the Vessel tab of the layout sector; in addition, these can now be added to Combo pages and Smartmodes.

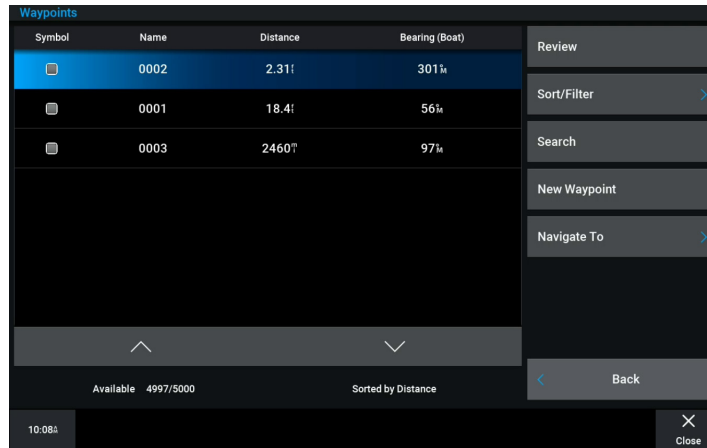


Voice Control – Show Waypoints

This update adds an additional voice control command to the [USB Voice Control Dongle](#).

New voice control command:

- Show Waypoints



Compatibility

	GPSMAP® 8600 (17"–24")	GPSMAP 8600xsv (10"–16")	GPSMAP 8700 Black Box	GPSMAP 7x3/9x3/12x3	GPSMAP 10x2/12x2 (Key)	ECHOMAP™ Ultra (10/12")	ECHOMAP UHD2 (6/7/9" Touch)	ECHOMAP UHD (7/9" Touch)	ECHOMAP UHD2 (5/7" Key)	TD 50	GHC™ 50
LiveScope™ Heading Sharing	●	●	●	●	●	●	●	●			
Power-Pole® Anchor Advanced Boat Control	●	●	●	●	●	●	●	●		●	
Chartplotter ActiveCaptain® QR Code	●	●	●	●	●		●		●		●
Chartplotter Message Banner and Popup	●	●	●	●	●		●		●	●	●
Trips and Graphs	●	●	●	●	●		●		●	●	
Voice Control – Show Waypoints	●	●	●	●							

KEY

- New feature

¹Note: The C-Monster GATEWAY from Power-Pole will need to be updated to v.00_62 and newer to support these features.