

APRIL 2023 MARINE SOFTWARE UPDATE

PRODUCT UPDATE



In an ongoing effort to improve our products and provide enhanced features to existing users, we are excited to announce the Q2 2023 marine software update. The update provides improved functionality and new features throughout our marine systems.

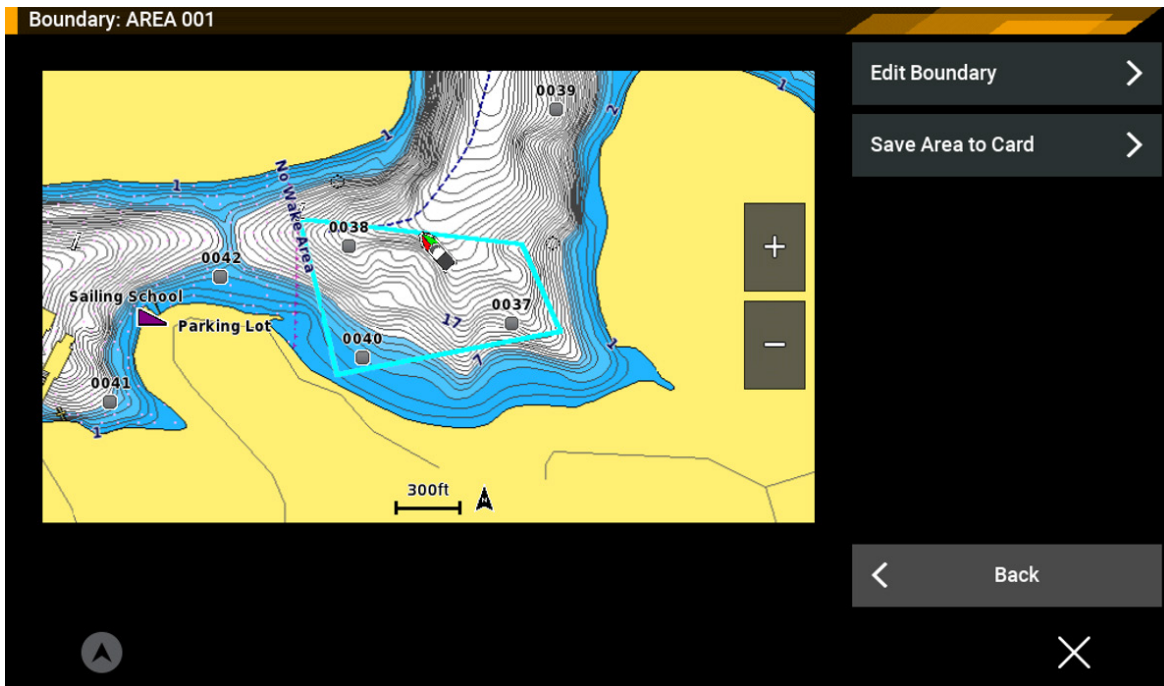
The preferred update method is a free download using the ActiveCaptain® mobile app or from a computer with Garmin Express™ software. A preloaded update card is also available for purchase and will be shipped directly from Garmin. For all update methods, visit Garmin.com/support/software/marine for more information.

For the most up-to-date chart data available, visit our [chart update page](#) or marinesupport.garmin.com to find information on updating your device's charts, or tap the **Download Charts** option from the ActiveCaptain app to see what's available. For other options and more information on available marine charts, visit our [marine charts and maps webpage](#).

Please see below for a few featured highlights found in the update as well as a detailed reference table at the end of the document.

Export User Data by Region

This update allows the user to save only the data within a specified boundary area to an SD™ card.



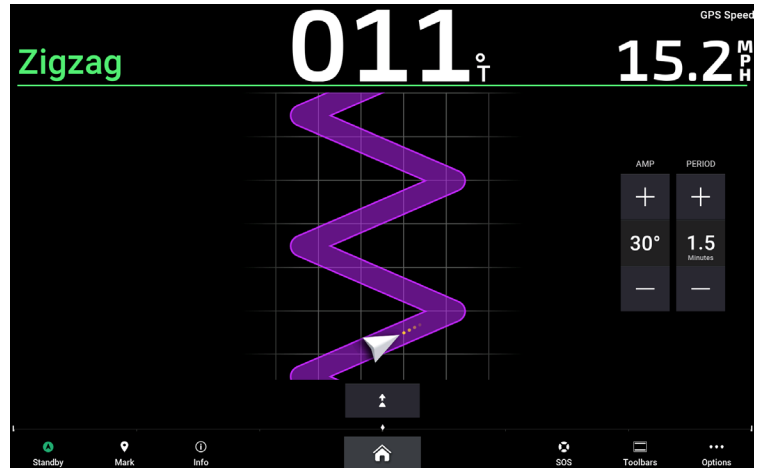
APRIL 2023 MARINE SOFTWARE UPDATE

PRODUCT UPDATE

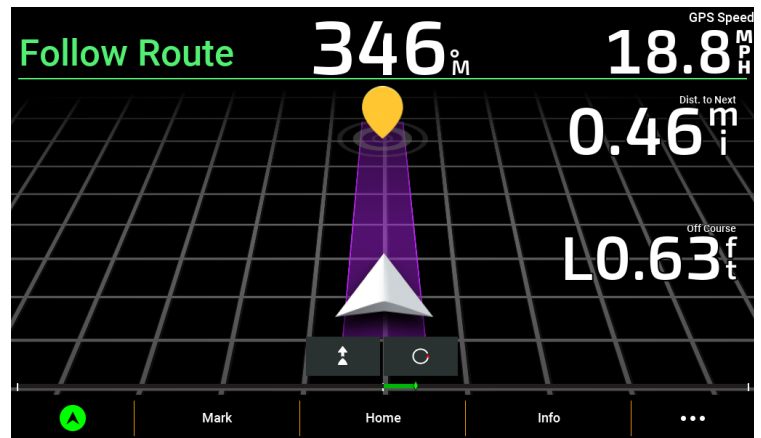
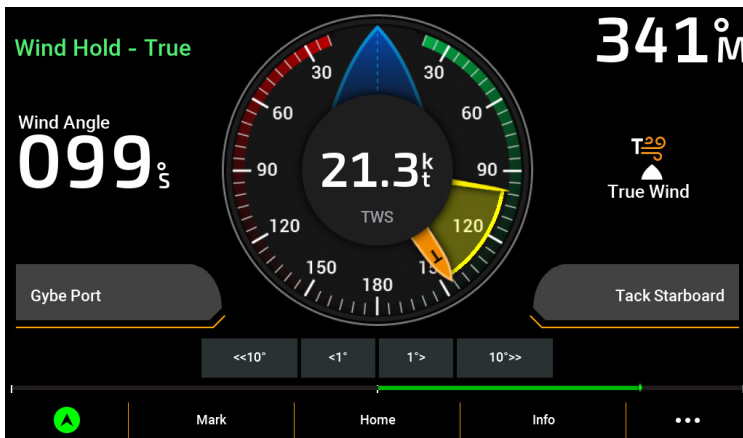
Autopilot UI Improvements—GPSMAP® and ECHOMAP™ Chartplotter

This update brings better autopilot graphics to select GPSMAP and ECHOMAP chartplotters. This new interface also features a rotating compass and added gradients to improve the look and feel of the autopilot page.

GPSMAP

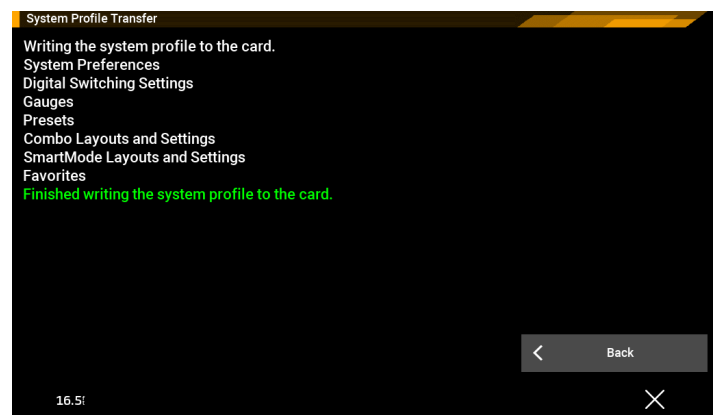
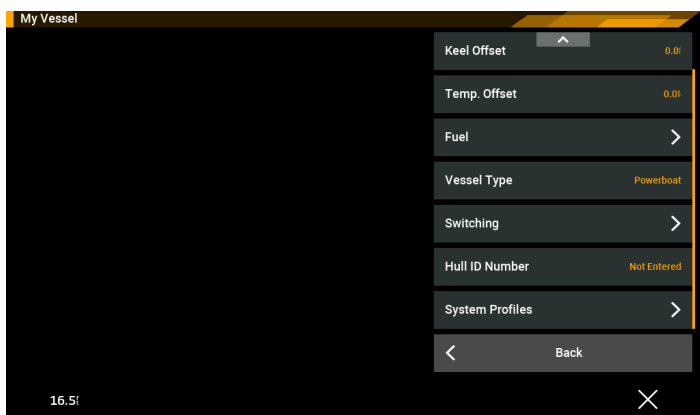


ECHOMAP



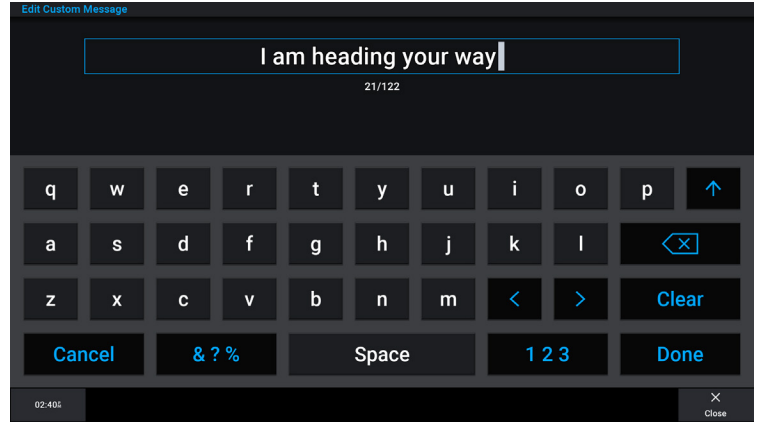
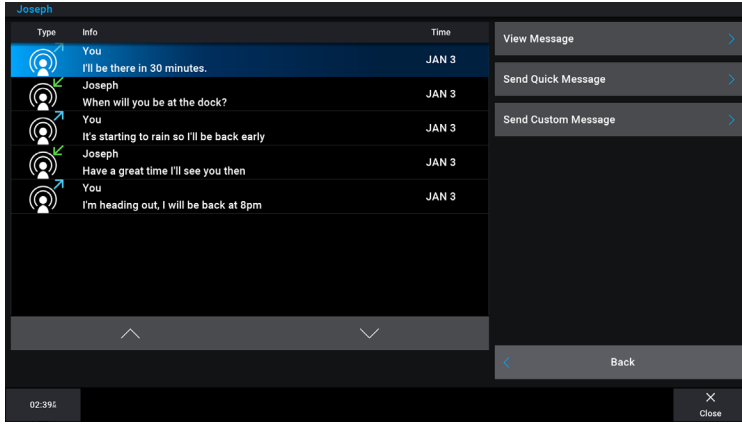
System Profile Transfer—ECHOMAP UHD2 Touch Chartplotters

With this update, ECHOMAP UHD2 Touch chartplotters allow you to save your system profile to a memory card and import system profile settings from a memory card. This can be helpful for charter or fleet vessels and for sharing your setup information with a friend.



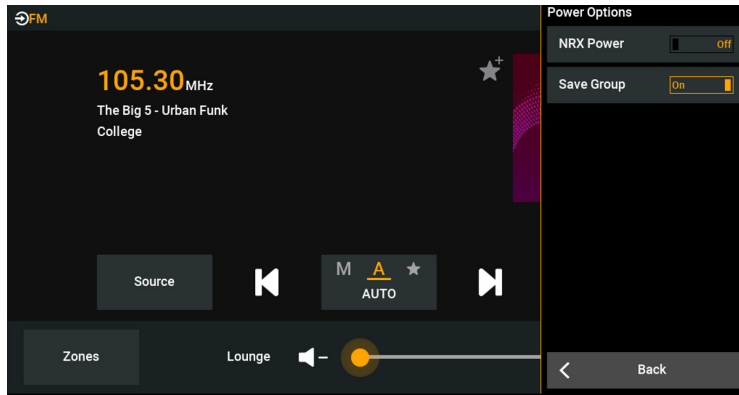
inReach® Satellite Communicator Custom Messaging

This update adds MFD support for sending and replying with custom messages via a connected inReach device¹.



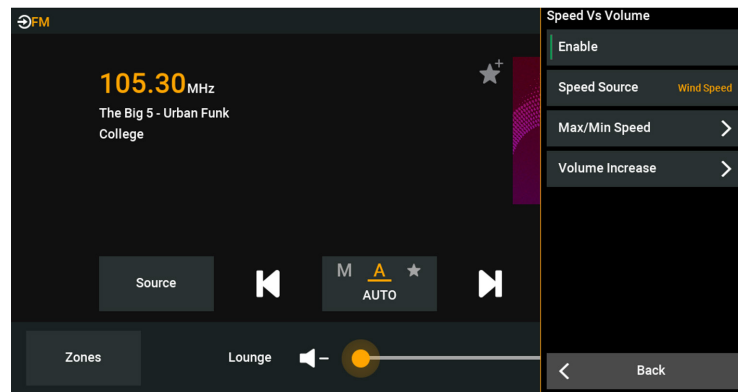
Media Page Updates—Save Group

This update enables a previously created group of Fusion® sound system head units to be re-created after switching the units back on.



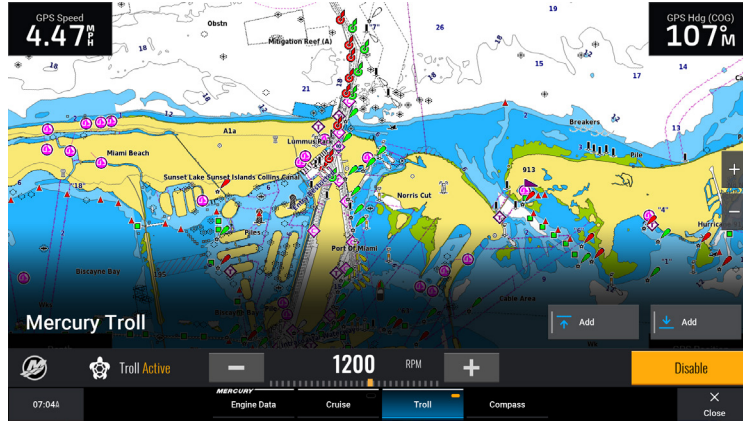
Media Page Updates—Speed vs. Volume

This update adds the **Speed vs. Volume** feature, automatically adjusting speaker volume as the boat speed increases to compatible chartplotters.



Mercury® Overlay Switcher Branding

When using a [SmartCraft® Connect gateway](#), this update adds the Mercury logo and active indicators to the Mercury features on the toolbar switcher.



Mercury Autopilot Autoheading and Route Following

When using a [SmartCraft Connect gateway](#), this update adds the ability to control Mercury autopilot (Autoheading and Route Following) from Garmin MFDs.

- **Autoheading** will hold the boat in a specific direction and allow the user to make step turns.
- **Route Following** will command the boat to follow a route created on the Garmin MFD while providing the user details about the route turns.



Voice Control—Additional Commands

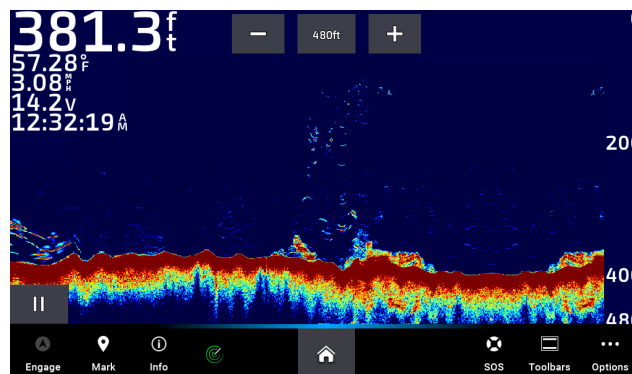
This update adds several additional voice control commands to the [USB Voice Control Dongle](#).

New sonar voice control commands:

- Increase sonar gain
- Decrease sonar gain
- Sonar gain automatic
- Increase sonar range
- Decrease sonar range
- Sonar range automatic

New radar voice control commands:

- Start MotionScope™ technology
- Stop MotionScope technology



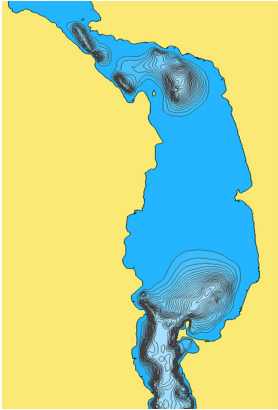
APRIL 2023 MARINE SOFTWARE UPDATE

PRODUCT UPDATE

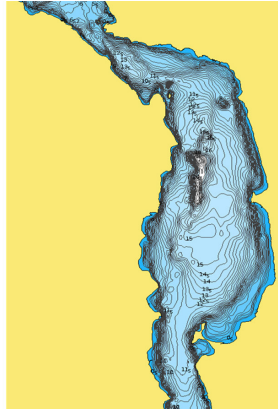
Quickdraw™ Contours Mapping 2.0

This update utilizes mapping data recorded with Quickdraw Contours feature to improve the fishing chart detail on Garmin Navionics+™ and Garmin Navionics Vision+™ mapping products. This results in a better, more detailed map in the areas users care about the most. Additionally, with your active GN+ subscription, you can download the new and improved HD maps as soon as they're integrated into your mapping product.

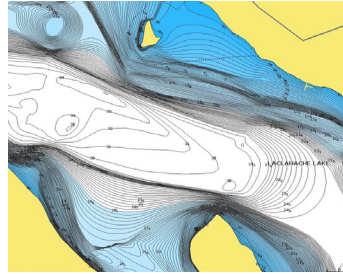
Before



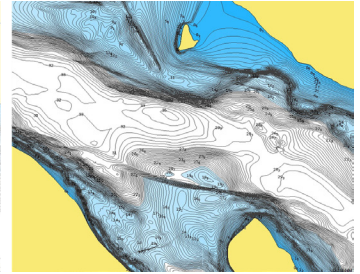
After



Before



After



Compatibility

	GPSMAP® 8600 (17"-24")	GPSMAP 8600xsv (10"-16")	GPSMAP 8700 Black Box	GPSMAP 7x3/9x3/12x3	GPSMAP 10x2/12x2 (Key)	Echomap UHD2 (6/7/9" Touch)	Echomap UHD2 (5/7" Key)	TD50	GHC™ 50
Export User Data By Region	●	●	●	●	●	●	●	●	
Autopilot UI Improvements	●	●	●	●	●	●		●	●
System Profile Transfer	●	●	●	●	●	●			
inReach® Custom Messaging ¹	●	●	●	●	●				
Media Page Updates Save Group	●	●	●	●	●	●		●	
Media Page Updates Speed vs. Volume	●	●	●	●	●	●		●	
Mercury® Overlay Switcher Branding	●	●	●	●	●			●	
Mercury Autopilot Autoheading and Route Following	●	●	●	●	●			●	
Additional Voice Commands	●	●	●	●					

KEY

- New feature with the April 2023 software release
- Product already has this feature

¹Active satellite subscription required. Some jurisdictions regulate or prohibit the use of satellite communication devices. It is the responsibility of the user to know and follow all applicable laws in the jurisdictions where the device is intended to be used.