

SEPTEMBER 2022 MARINE SOFTWARE UPDATE

PRODUCT UPDATE



In an ongoing effort to improve our products and provide enhanced features to existing users, we are excited to announce the Q4 2022 marine software update. The update provides improved functionality and new features throughout our marine systems.

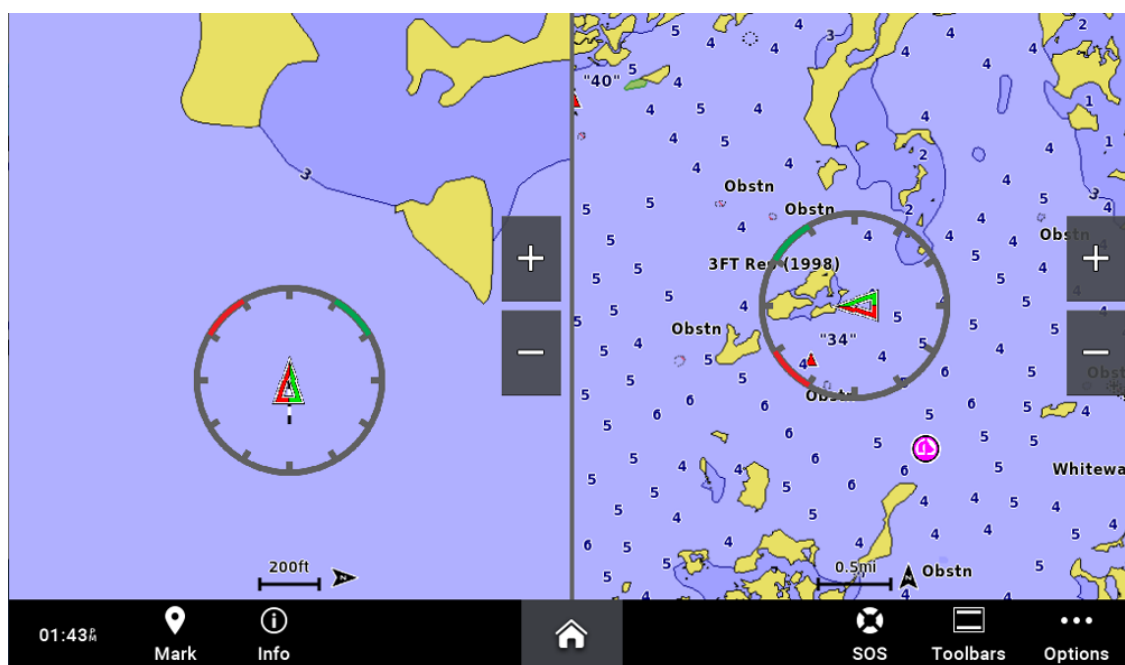
The preferred update method is a free download using the ActiveCaptain® mobile app or from a computer with Garmin Express™ Software. A preloaded update card is also available for purchase and will be shipped directly from Garmin. For all update methods, visit garmin.com/support/software/marine for more information.

For the most up-to-date chart data available, visit our [Chart Update Page](#) or marinesupport.garmin.com to find information on updating your device's charts, or tap the **Download Charts** option from the ActiveCaptain app to see what's available. For other options and more information on available marine charts, visit our [Marine Charts and Maps webpage](#).

Please see below for a few featured highlights found in the update as well as a detailed reference table at the end of the document.

Chart Orientations

This feature allows users to use a combo screen with two navigation charts each configured with a different chart orientation. This allows the user to customize their chart orientations to meet their specific boating needs.



SEPTEMBER 2022 MARINE SOFTWARE UPDATE

PRODUCT UPDATE

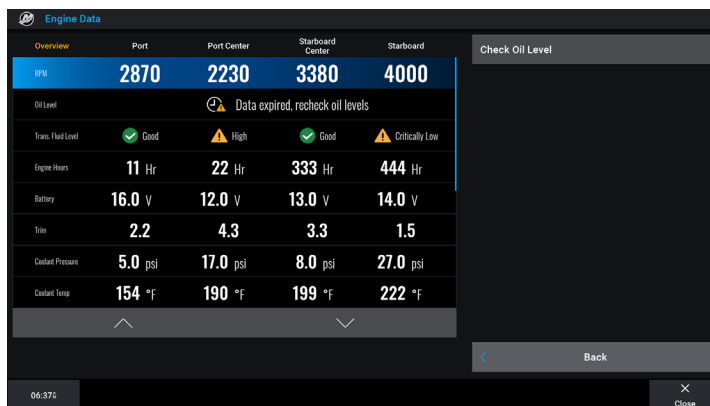
Mercury® Engine Overlay Bar

The engine overlay bar is a new overlay bar that is available when the unit has detected a Mercury gateway. This overlay bar allows the user to see the engine RPM values, total fuel remaining, total fuel flow, sport exhaust status, and steering angle information.



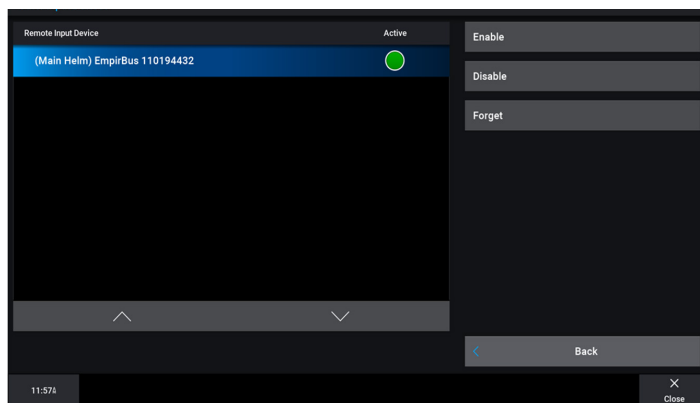
Mercury® Advanced Engine Monitoring (Oil Level)

This update adds advanced engine detail monitoring for Oil and Transmission fluid levels. This will be available from a new page accessible from the Mercury gauge menu.



3rd Party MFD Input Support

This feature allows 3rd party inputs, keypads, steering wheels, and button keypads to be programmed as remote input devices for GPSMAP chartplotters. The input device can be programmed to a variety of functions including favorites keys, function-specific keys, media controls and complete display navigation. The EmpirBus Connect 50 is required to complete this integration.



SEPTEMBER 2022 MARINE SOFTWARE UPDATE

PRODUCT UPDATE

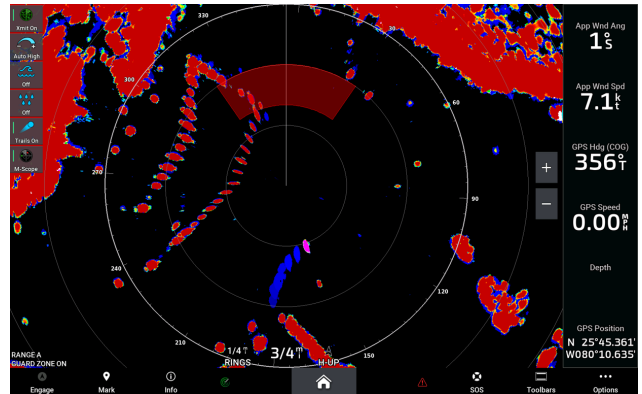
Radar - Improve On-Screen Control for Rain and Sea Clutter

This update improves the icon images for the Rain and Sea Clutter quick controls on the side of the radar screen so that it is more apparent which each icon represents.

Rain Clutter



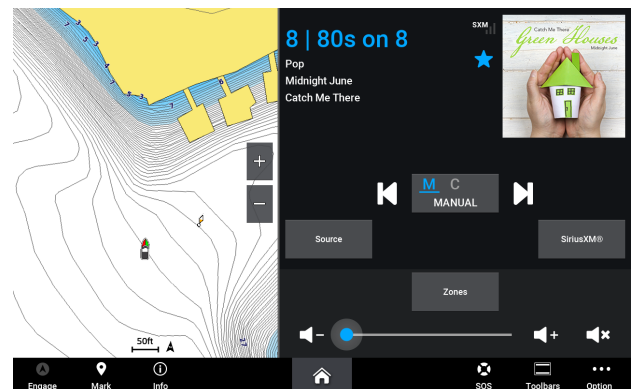
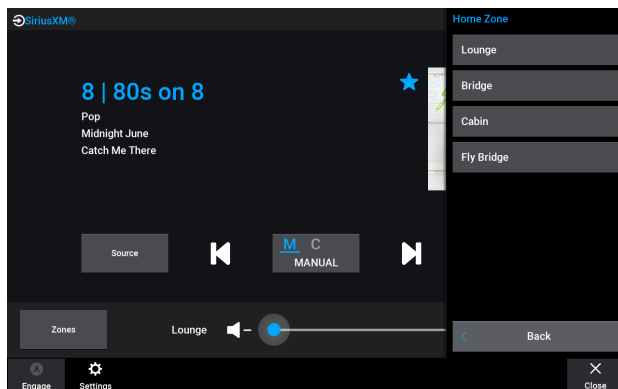
Sea Clutter



Fusion® Media Combos Support and Group Global Zone

With this update, when a user has two or more stereos, the Fusion PartyBus feature can be enabled. This will allow the stereos to play the same media at the same time and be able to be controlled from one MFD. On the MFD, the PartyBus feature is known as “Groups.” The MFD Media application offers a similar “Volume” page with a list of these controls. This feature also adds the ‘All’ volume slider and adds support to allow the user to control the volume of the Group or device. This update also allows the media controls to be placed into a combo page.

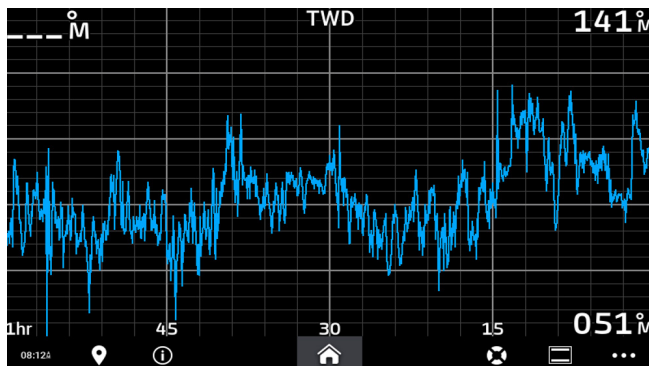
Compatible stereos: MS RA770, MS RA670, MS WB670, MS SRX400, MS ERX400



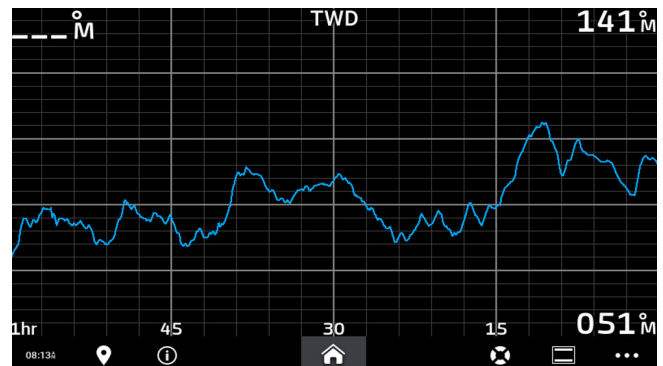
Filtered Graphs

This update reduces the amount of noise on the display to make them more usable for boaters.

Old



New



SEPTEMBER 2022 MARINE SOFTWARE UPDATE

PRODUCT UPDATE

Voice Control - Additional Commands

This update adds several additional voice control commands to the USB Voice Control Dongle.

New commands include:

- Clear Active Track
- What time is it?
- What is the water temperature?
- What is the air temperature?
- What is the temperature?
- What is the wind speed?
- Where is the wind from?
- What is the wind direction?
- What is the wind angle?
- When is sunrise?
- When is sunset?
- Enable echo trail
- Disable echo trail
- Clear echo trail
- Increase radar gain
- Decrease radar gain
- Increase radar range
- Decrease radar range
- Zoom In
- Zoom Out

Compatibility

	GPSMAP 8600 (17"-24")	GPSMAP 8600xsv (10"-16")	GPSMAP 8700 Black Box	GPSMAP 7x3/9x3/12x3	GPSMAP 10x2/12x2	ECHOMAP Ultra (10"-12")	ECHOMAP UHD (7"-9")	ECHOMAP UHD2 (5"-7")
Chart Orientations	X	X	X	X	X			X
Mercury Engine Overlay Bar	X	X	X	X	X	X	X	
Mercury Advanced Engine Monitoring (Oil Level)	X	X	X	X	X	X	X	
3 rd Party MFD Input Support	X	X	X	X	X			
Radar - Improve On-Screen Control for Rain and Sea Clutter	X	X	X	X	X			
Fusion Media Combos Support and Group Global Zone	X	X	X	X	X			
Filtered Graphs	X	X	X	X	X			
Voice Control - Additional Commands	X	X	X	X				