

JANUARY 2022 MARINE SOFTWARE UPDATE

PRODUCT UPDATE



In an ongoing effort to improve our products and provide enhanced features to existing users, we are excited to announce the Q1 2022 marine software update. The update provides improved functionality and new features throughout our marine systems.

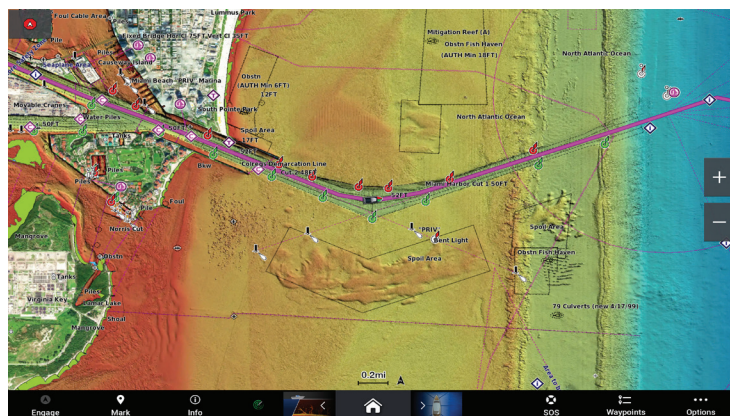
For a free download of the software update, visit Garmin.com, or tap on the “My Marine Devices” option from the ActiveCaptain® app. To purchase the update on a preloaded data card shipped directly from Garmin, visit Garmin.com for more information.

For the most up-to-date chart data available, visit our [Chart Update Page](#) or marinesupport.garmin.com to find information on updating your device's charts, or tap the “Download Charts” option from the ActiveCaptain app to see what's available. For other options and more information on available marine charts, visit our [Marine Charts and Maps webpage](#).

Please see below for a few featured highlights found in the update as well as a detailed reference table at the end of the document.

Garmin Navionics+™ Mapping

Experience our all-new Garmin Navionics+ and Garmin Navionics Vision+™ mapping. For more detailed information and features, please see our announcement [here](#).



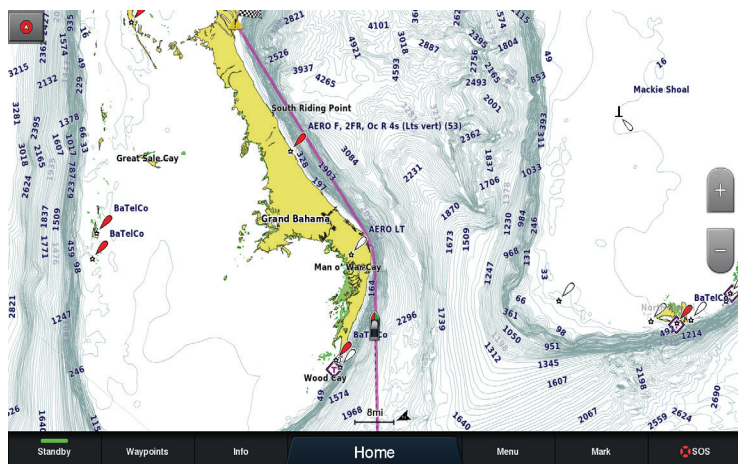
JANUARY 2022 MARINE SOFTWARE UPDATE

PRODUCT UPDATE

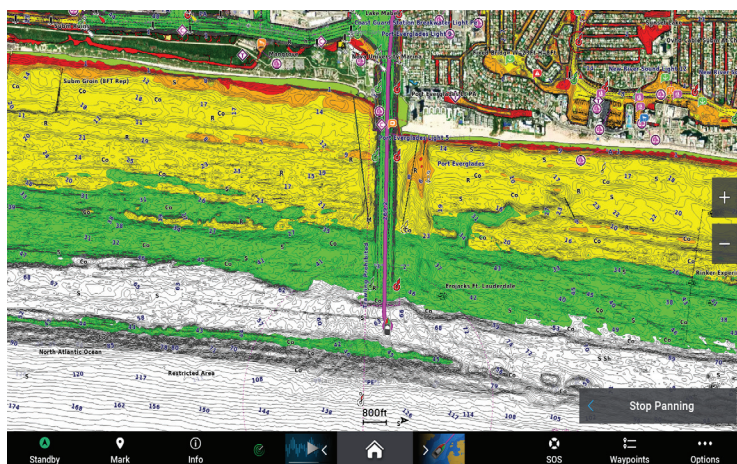
GPSMAP® Chartplotter User Interface Update

With this update, the GPSMAP user interface includes new graphics and fonts for an updated look and feel. The new control bar makes changing between your favorite functions as easy as a single button press with the new Pinned carousel.

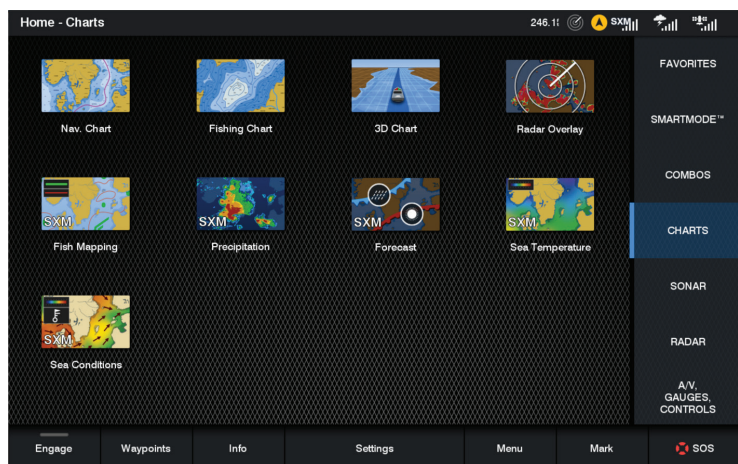
Before



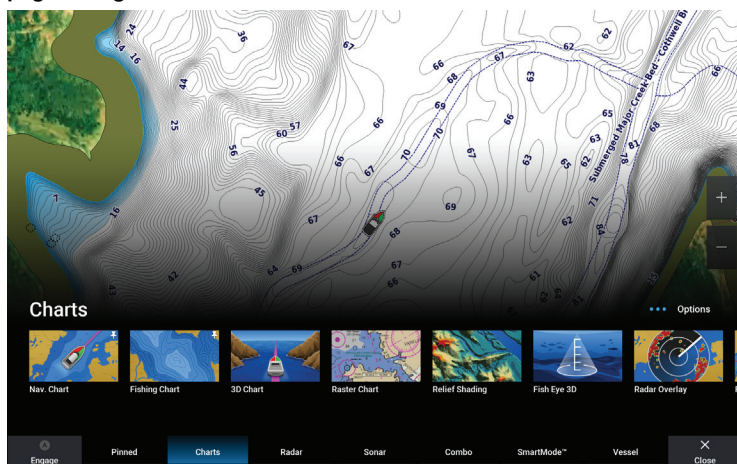
After



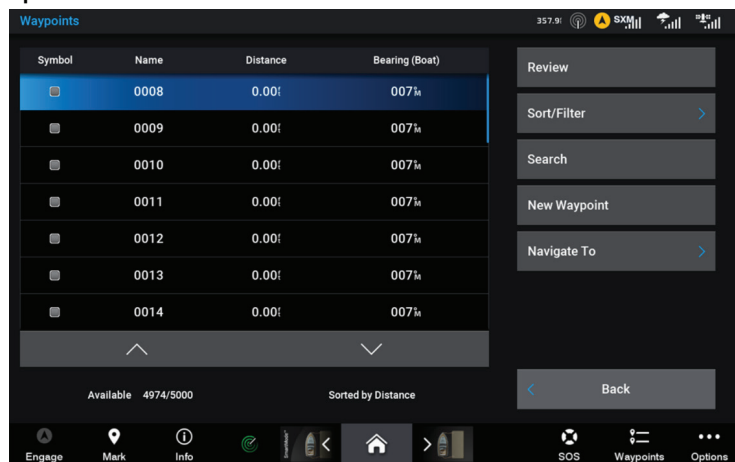
Before



After: A newly designed homepage allows for faster and more efficient page changes.



After: Lists and menu pages have updated graphics and fonts for an updated look and feel.



JANUARY 2022 MARINE SOFTWARE UPDATE

PRODUCT UPDATE

Vessel Look-Ahead

When enabled in the chart settings, Vessel Look-Ahead will shift the vessel position on the chart as the vessel speeds up to show more of the chart in front of the vessel. The vessel will re-center on the chart when the vessel slows down, allowing chart visibility in all directions. The setting also has a speed adjustment that allows customization of how much the vessel shifts on screen based on the speed.

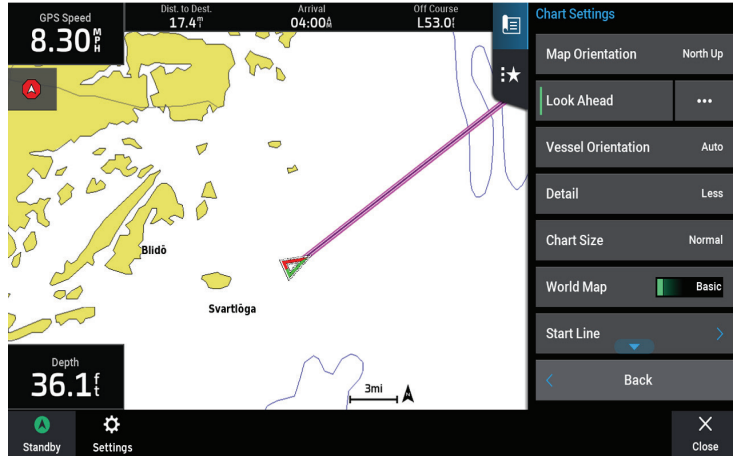
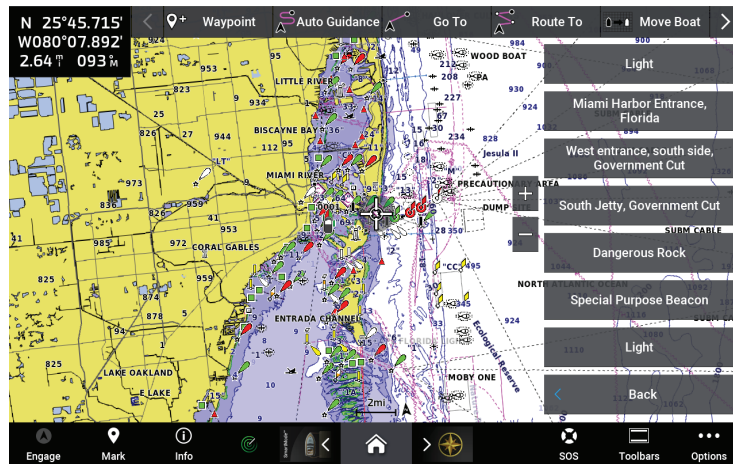


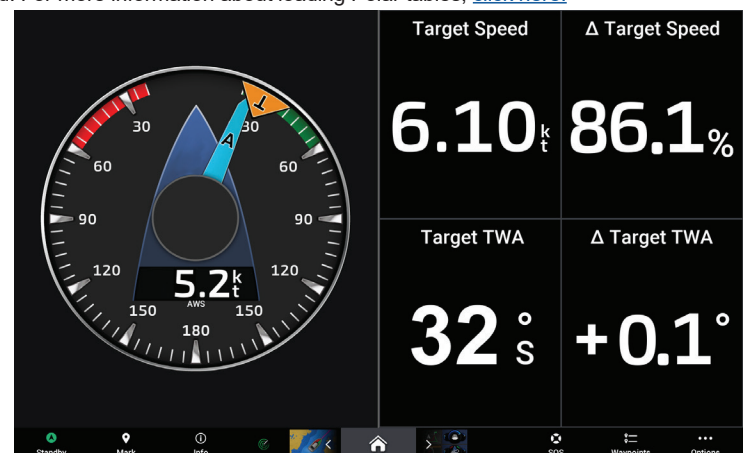
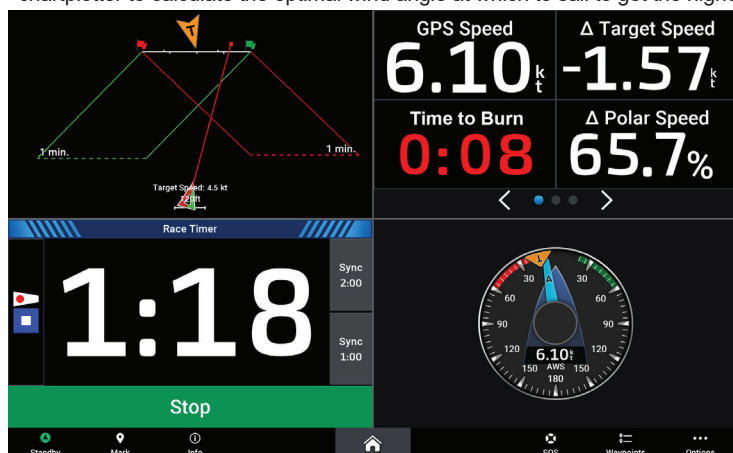
Chart Points of Interest (POI) Review Feature

This change will remove the review button from chartplotter maps. Instead, POI will immediately appear when the user touches the map to improve usability and user efficiency.



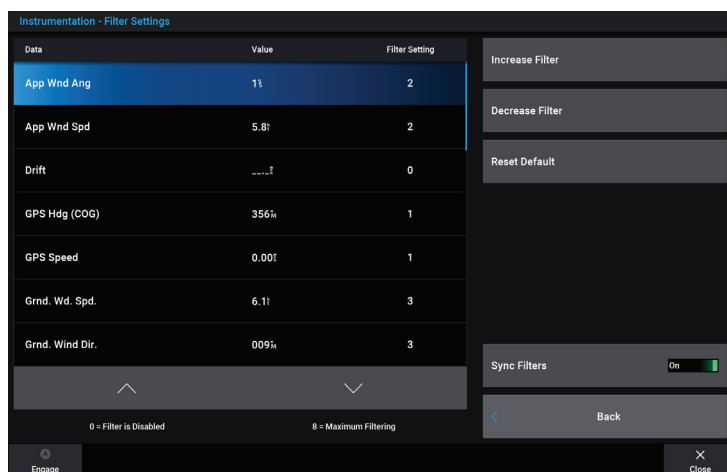
Polar Tables

With the added support for Polar tables, Garmin chartplotters can provide sailors with information to make the best use of their sails. The Polar tables allow the chartplotter to calculate the optimal wind angle at which to sail to get the highest speed. For more information about loading Polar tables, [click here](#).



Sailing-Filtering

Chartplotters now have the capability to apply filtering to the values displayed on select data fields and gauges. The filters can be used to smooth noisy data and can be set to eight different levels of dampening. This reduces flickering of data values (e.g., wind speed, drift, GPS speed) for easier interpretation and an improved sailing experience.



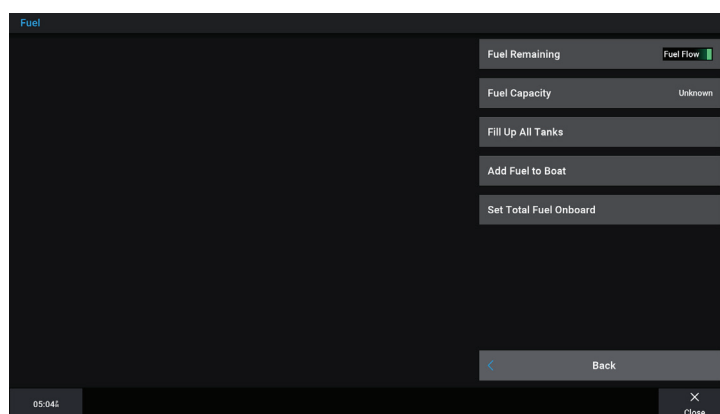
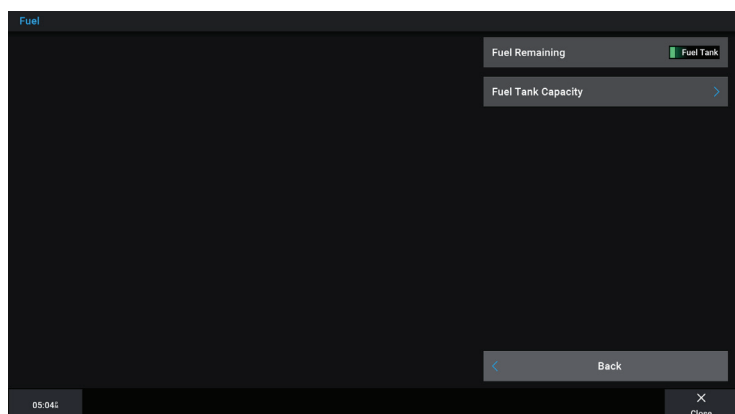
Yamaha® - Support Engine Page in a Split Screen

You can now add the Yamaha engine data to your favorite split screen or combo page.



Fuel Remaining via Tank Sensor

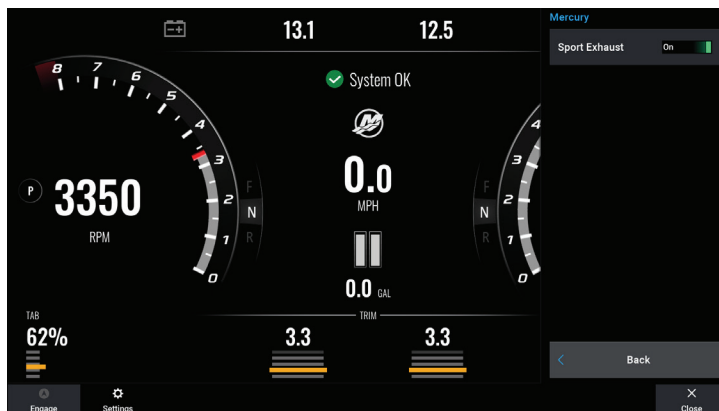
The customers or installers enter the fuel tank capacity, and fuel remaining is calculated based on the sensor in the tank, rather than fuel flow. Existing customers will notice no change unless they flip the Fuel Remaining toggle.



JANUARY 2022 MARINE SOFTWARE UPDATE

Mercury® - Sport Exhaust

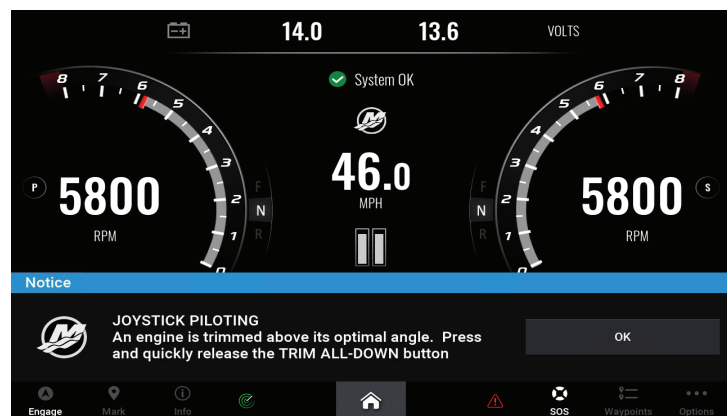
Sport Exhaust is a feature that routes the exhaust through a muffler (or not) to make the engines quiet or loud. This feature will provide the ability to enable or disable the Sport Exhaust feature if supported by the engine.



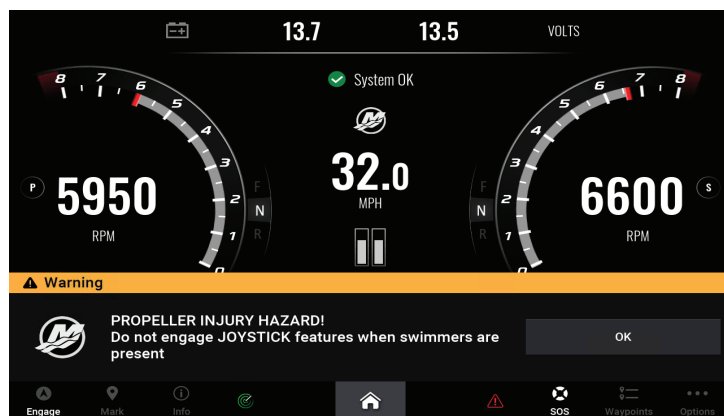
Mercury - Non-alarm Pop-Ups

This update allows non-alarm pop-ups from the Mercury system to be displayed on our MFDs.

Non-alarm Pop-Up

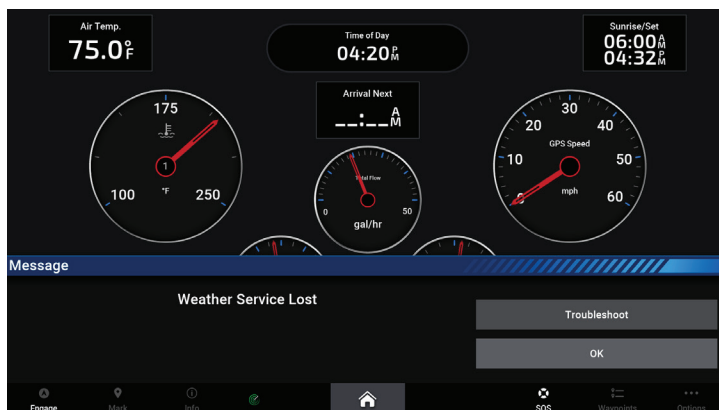


Alarm Pop-Up



Common Troubleshooting Assistance

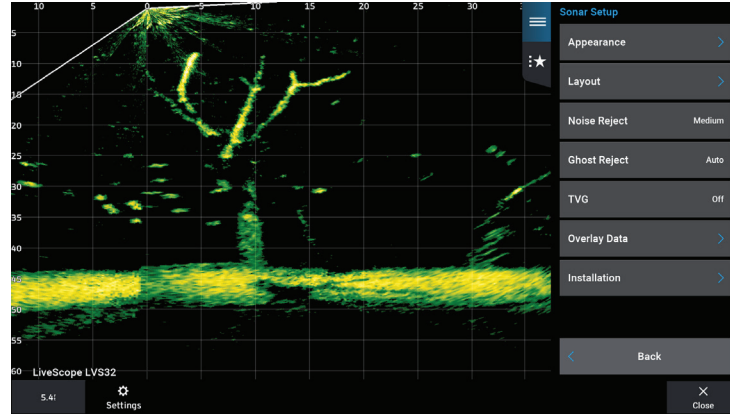
This feature will add troubleshooting text to common alarm banners to reduce calls to product support.



JANUARY 2022 MARINE SOFTWARE UPDATE

Ghost Reject - Auto Setting

This feature will add a Ghost Reject-Auto setting that will balance rep rate and ghost image rejection under most conditions to provide a clear picture.



OneHelm™ - Overlay Bar

A user can add an overlay bar for OneHelm to either the top or bottom of pages that support overlay bars. In addition, a provider can specify a unique name and icon to represent an overlay bar.



| | GPSMAP® 8400/8600/8700 Series | GPSMAP 7x2/9x2/12x2 Plus Series | GPSMAP 12x2 Series | GPSMAP 10x2/12x2 Keyed Series | GPSMAP 7x3/9x3/12x3 Series | GPSMAP A12 | ECHOMAP™ UHD 7x and 9x Series | ECHOMAP Ultra Series |
|--|-------------------------------------|---------------------------------------|-----------------------|-------------------------------------|----------------------------------|------------|-------------------------------------|-------------------------|
| Garmin User Interface - GPSMAP | X | X | X | X | X | X | | |
| Vessel Look-ahead | X | X | X | X | X | X | | |
| Chart POI | X | X | X | X | X | X | | |
| Sailing Features (Polars & Filtering) | X | X | X | X | X | X | | |
| Yamaha® Engine Page Split Screen Fuel Remaining | X | X | X | X | X | X | | |
| Mercury® Sport Exhaust | X | X | X | X | X | X | X | X |
| Mercury Non-alarm Pop-ups | X | X | X | X | X | X | X | X |
| OneHelm Overlay Bar | X | X | X | | X | | | |
| OnDeck™ Installation Verification | X | X | X | X | X | X | | |
| LiveScope™ Ghost Reject - Auto | X | X | | X | X | X | X | X |
| Troubleshooting Text | X | X | X | X | X | X | | |