

SEPTEMBER 2021 MARINE SOFTWARE UPDATE

PRODUCT UPDATE



In an ongoing effort to improve our products and provide enhanced features to existing users, we are excited to announce the Q4 2021 marine software update. It provides improved functionality and new features throughout our marine systems.

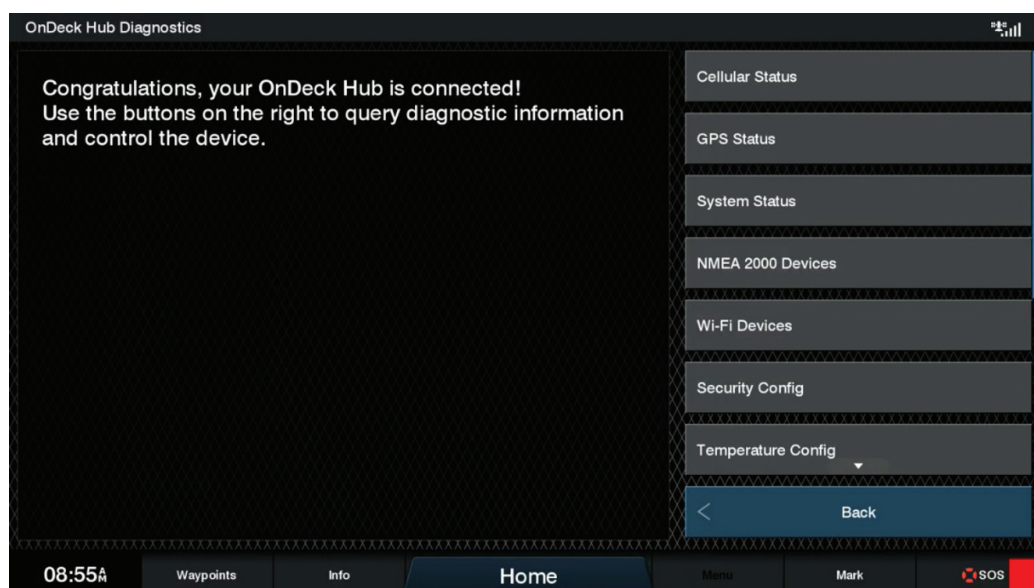
Visit Garmin.com, or tap on the "My Marine Devices" option from the ActiveCaptain® app for a free download of the software update. If you would like to purchase the update on a preloaded data card shipped directly from Garmin, visit Garmin.com for more information.

For the most up-to-date chart data available, visit our [Chart Update Page](#) or marinesupport.garmin.com to find information on updating your device's charts, or tap on the "Download Charts" option from the ActiveCaptain app to see what is available. For other options and more information on available marine charts, visit our [Marine Charts and Maps webpage](#).

Please see below for a few featured highlights found in the update as well as a detailed reference table at the end of the document.

OnDeck™ System Install Verification

A new diagnostic interface will assist OEMs, dealers and customers in OnDeck installation verification and troubleshooting. This feature will show the following on MFDs: 1) detected sensors and relays; 2) OnDeck Hub diagnostic data to streamline the installation process.

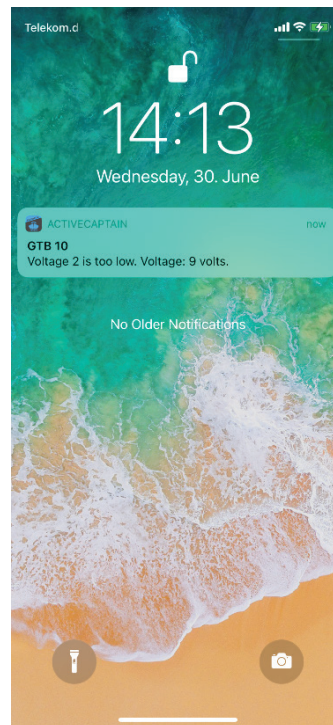
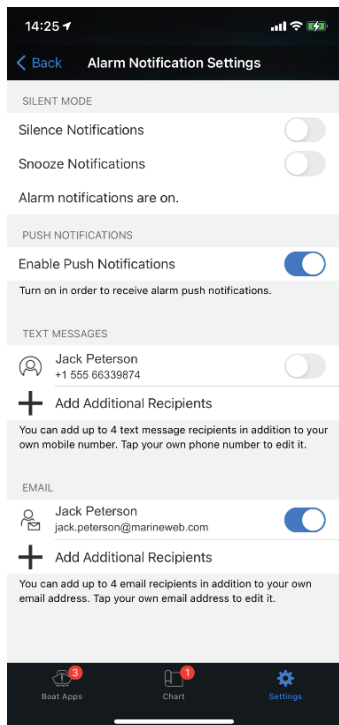


SEPTEMBER 2021 MARINE SOFTWARE UPDATE

PRODUCT UPDATE

OnDeck™ System Push Notifications

In addition to the existing notification by email or text message, this feature allows push notifications to be sent to OnDeck users in case alarms are triggered.



Polar Tables

With the added support for polar tables, Garmin chartplotters can provide sailors with information to make best use of their sails. The polar tables allow the chartplotter to calculate the optimal wind angle at which to sail to get the highest speed.

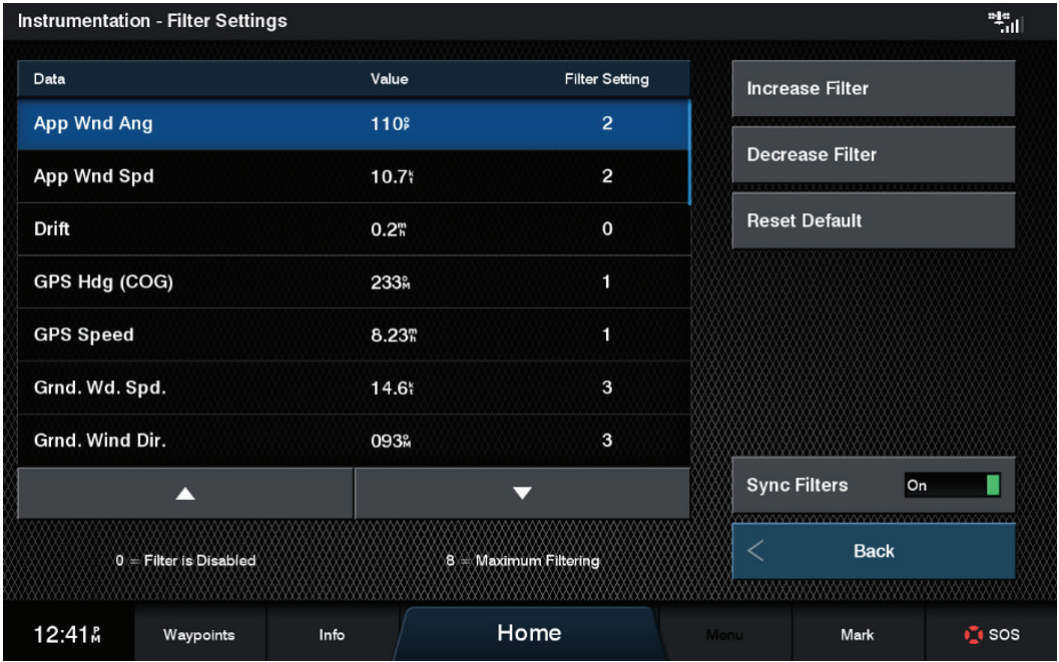


SEPTEMBER 2021 MARINE SOFTWARE UPDATE

PRODUCT UPDATE

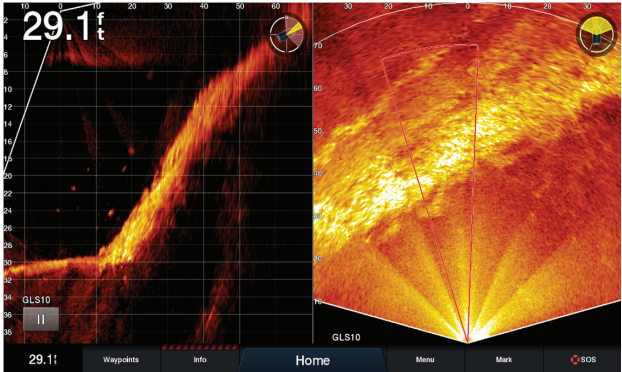
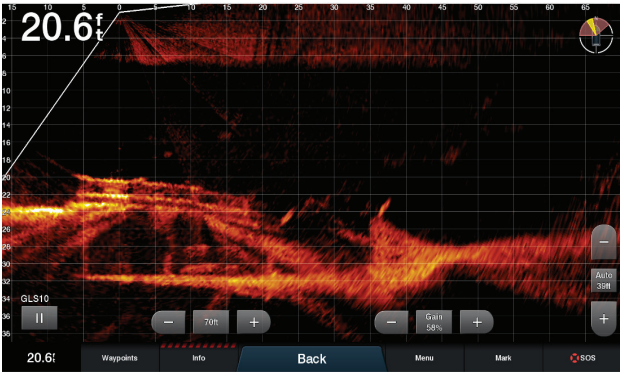
Sailing-Filtering

Chartplotters now have the capability to apply filtering to the values displayed on select data fields and gauges. The filters can be used to smooth noisy data and can be set to eight different levels of dampening. Essentially, this reduces flickering of data values (e.g., wind speed, drift, GPS speed) for easier interpretation and an improved sailing experience.



LiveScope™ Sonar Beam Overlay

The new beam overlay feature lets users with more than one transducer see how their transducers are oriented in relation to each other. The beam icon shows the current transducer being viewed as well as all other connected, calibrated transducers. This allows the user to view two LiveScope feeds and have increased awareness of what is shown in the Forward mode. In Perspective mode, all other calibrated transducer beams appear in the coverage area. This allows the user to cross-reference what they are seeing in Forward mode and what they are seeing in Perspective mode.



SEPTEMBER 2021 MARINE SOFTWARE UPDATE

PRODUCT UPDATE

Update Feature Matrix

	GPSMAP® 8400/8600 Series	GPSMAP 7x2/9x2/12x2 Plus Series	GPSMAP 12x2 Series	GPSMAP 10x2/12x2 Keyed Series	GPSMAP 7x3/9x3/12x3 Series	GPSMAP A12	ECHOMAP UHD 7x and 9x Series	ECHOMAP Ultra Series
OnDeck™ System Install Verification	x	x	x	x	x	x		
LiveScope™ Sonar Beam Overlay	x	x	x	x	x	x	x	x
Sailing-Polars	x	x	x	x	x	x		
Sailing-Filtering	x	x	x	x	x	x		