

JUNE 2021 MARINE SOFTWARE UPDATE

PRODUCT UPDATE



In an ongoing effort to improve our products and provide enhanced features to existing users, we are excited to announce the Q3 2021 marine software update. It provides improved functionality and new features throughout our marine systems.

Visit Garmin.com, or tap on the "My Marine Devices" option from the ActiveCaptain® app for a free download of the software update. If you would like to purchase the update on a preloaded data card shipped directly from Garmin, visit Garmin.com for more information.

For the most up to date chart data available, visit our [Chart Update Page](#) or marinesupport.garmin.com to find information on updating your device's charts, or tap on the "Download Charts" option from the ActiveCaptain app to see what is available. For other options and more information on available marine charts visit our [Marine Charts and Maps webpage](#).

Please see below for a few featured highlights found in the update as well as a detailed reference table at the end of the document.

MERCURY ENGINE SUPPORT

See Mercury engine data* — such as RPMs, fuel flow, temperature, trim, alarms and more — for up to four engines on compatible Garmin chartplotters.

*Mercury SmartCraft interface required, sold by Mercury.

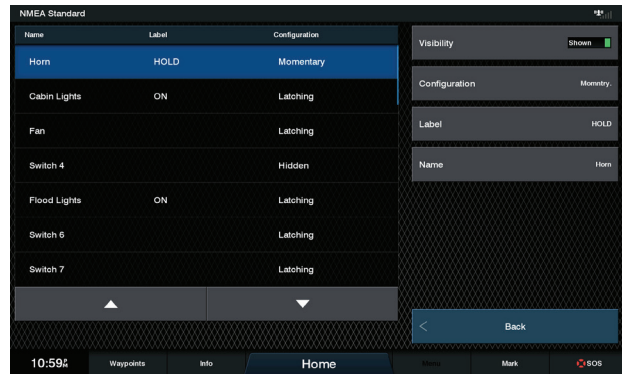


JUNE 2021 MARINE SOFTWARE UPDATE

PRODUCT UPDATE

MOMENTARY SWITCHING

All standard NMEA 2000 switches can now be configured to be momentary or latching, which means that items like a horn can now be pressed only once to get the desired result from that switch. Switches can now also be configured with a custom label and hidden as needed from the switching page.



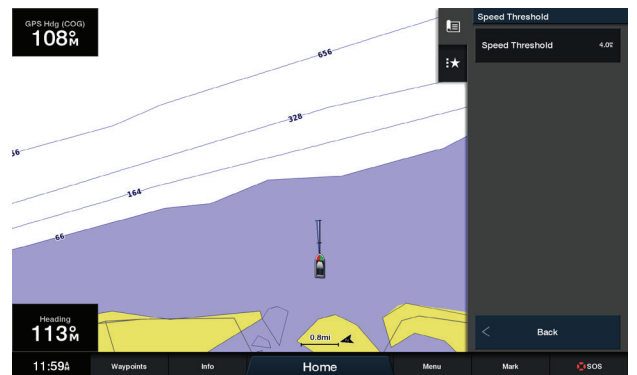
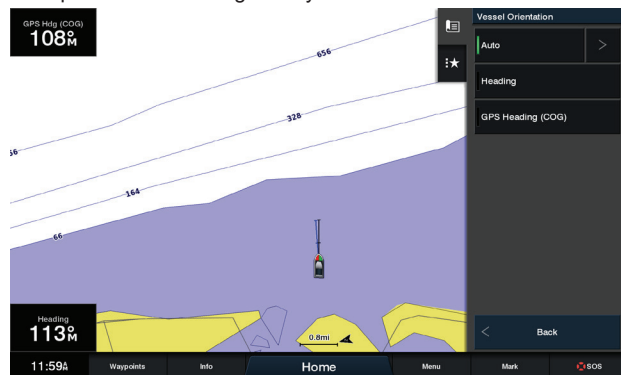
ACTIVECAPTAIN COMMUNITY

Boaters can now add up to three photos to reviews of points of interest like marinas, boat ramps and more within the ActiveCaptain Community. Users can now also read the same reviews for different businesses within the App, on ActiveCaptain.com or even on the MFD. Icons will also be updated to align with color coding on NOAA nautical charts. Boaters who take advantage of the growing community will be able to make smarter decisions whether they're already on the water using their MFD or pre-planning in the mobile application to get the most out of their next weekend getaway.



ALIGN VESSEL ICON

Now the vessel icon on 2D charts can be oriented with either Heading or GPS Course Over Ground (COG) Heading as desired by the user. There's also an Auto option which will automatically select Heading at slow speed and GPS Heading (COG) at high speeds. The speed threshold at which the boat switches between the two options can be configured by the user.



JUNE 2021 MARINE SOFTWARE UPDATE

PRODUCT UPDATE

Update Feature Matrix

	GPSMAP 8400/8600 Series	GPSMAP 7x2/9x2/12x2 Plus Series	GPSMAP 7x2/9x2/12x2 Series	GPSMAP 10x2/12x2 Keyed Series	GPSMAP 7x3/9x3/12x3 Series	ECHOMAP UHD 7x and 9x Series	ECHOMAP Ultra Series	Force Trolling Motor	TD50
Mercury Engines Integration	x	x	x	x	x	x	x		x
Momentary Switching Support	x	x	x	x	x	x	x		x
ActiveCaptain Community	x	x	x	x	x	x	x		x
Align Vessel Icon	x	x	x	x	x	x	x		x