

OCTOBER 2020 MARINE SOFTWARE UPDATE

PRODUCT UPDATE



In an ongoing effort to improve our products and provide enhanced features to existing users, we are excited to announce the Q4 2020 marine software update. It provides improved functionality and new features for our chartplotters.

Visit Garmin.com, or tap on the "My Marine Devices" option from the ActiveCaptain® app for a free download of the software update. If you would like to purchase the update on a preloaded data card shipped directly from Garmin, visit Garmin.com for more information.

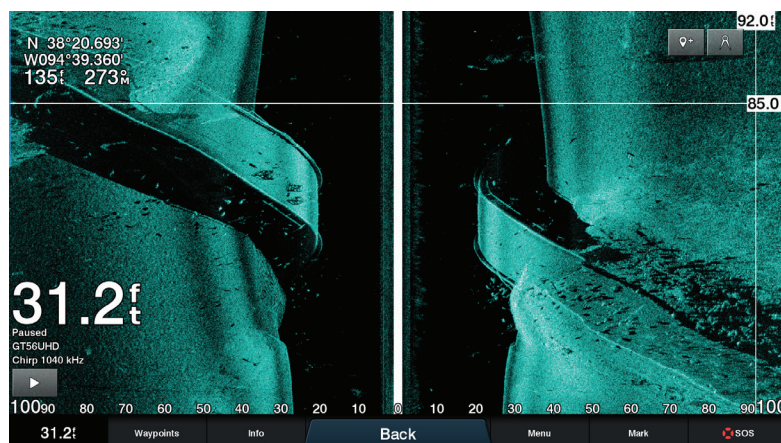
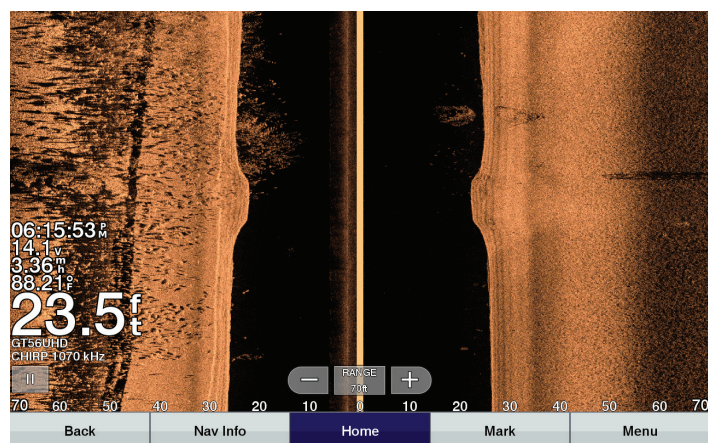
For the most up to date chart data available, visit marinesupport.garmin.com to find information on updating your device's charts, or tap on the "Download Charts" option from the ActiveCaptain app to see what is available. For other options and more information on available marine charts visit our [Marine Charts and Maps webpage](#).

Please see below for a few featured highlights found in the update as well as a detailed reference table at the end of the document.

Software Support for new GT36UHD-TM and GT56UHD-TM Transducers

The new transducers offer Ultra High-Definition (UHD) ClearVü and SideVü scanning sonar with 20% greater SideVü range at 1,000 kHz and three frequencies for top performance with improved clarity.

ECHOMAP UHD 7x and 9x, ECHOMAP Ultra, GPSMAP x3 series and GPSMAP 8600 series MFDs can update their software to get the upgraded sonar performance. The GCV 20 will only support the GT36.



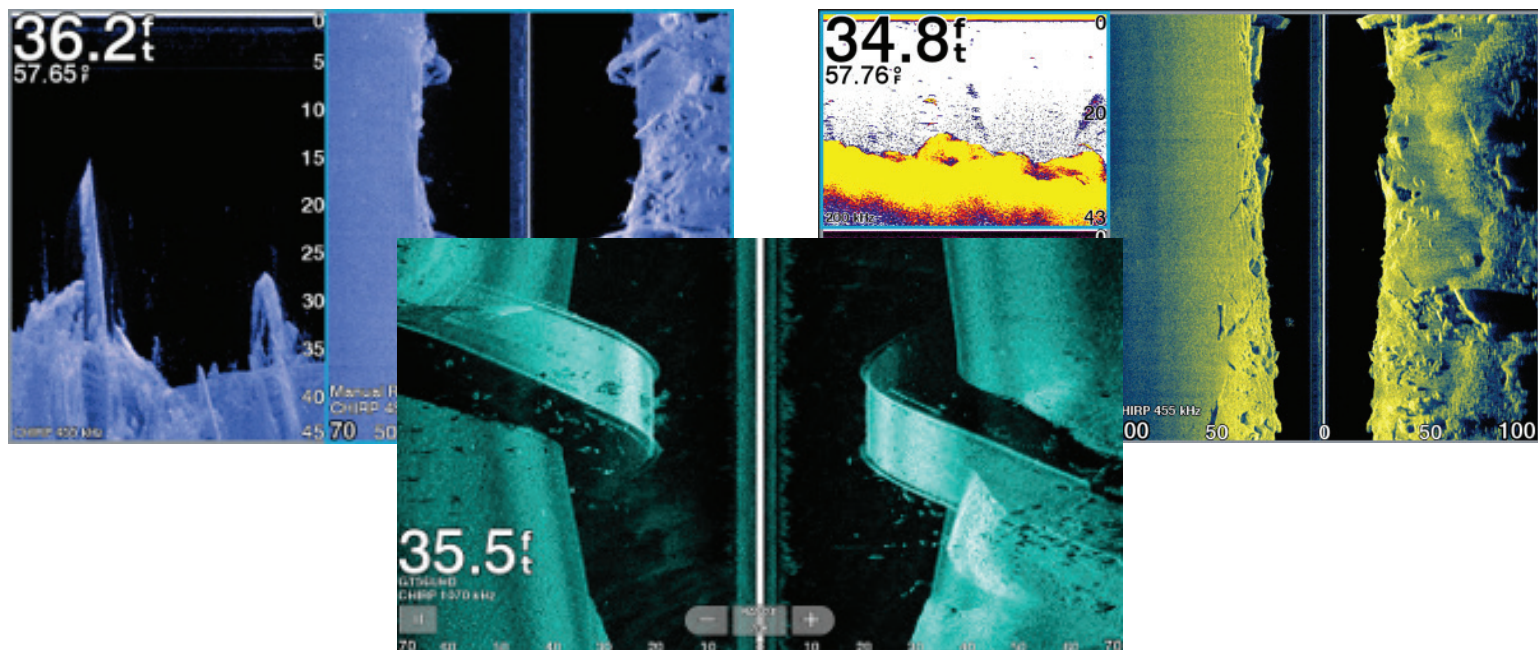
OCTOBER 2020 MARINE SOFTWARE UPDATE

PRODUCT UPDATE

New Vivid Scanning Sonar Color Palettes

New software enables 7 new vivid scanning sonar color palettes which make it even easier to distinguish fish and structure.

ECHOMAP™ UHD, ECHOMAP Ultra, GPSMAP® x2 and x3 series, and GPSMAP 8600 series MFDs can update software to get the new color palettes.



Software Updates Via Garmin Express™

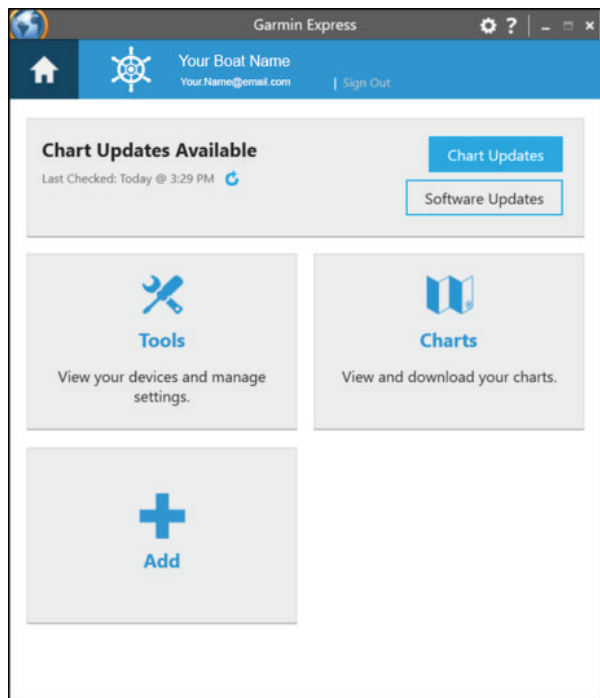


Chart and software updates can now be downloaded from Garmin Express to update ECHOMAP and GPSMAP chartplotters, as well as any other networked devices.

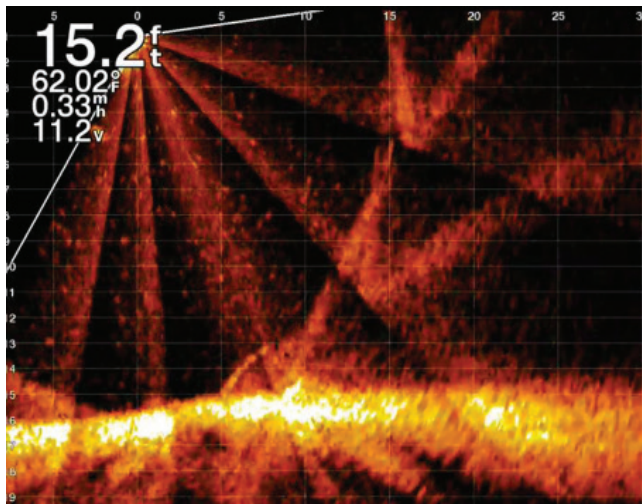
Downloads are still available via the ActiveCaptain® app and [Garmin.com](https://www.garmin.com).

OCTOBER 2020 MARINE SOFTWARE UPDATE

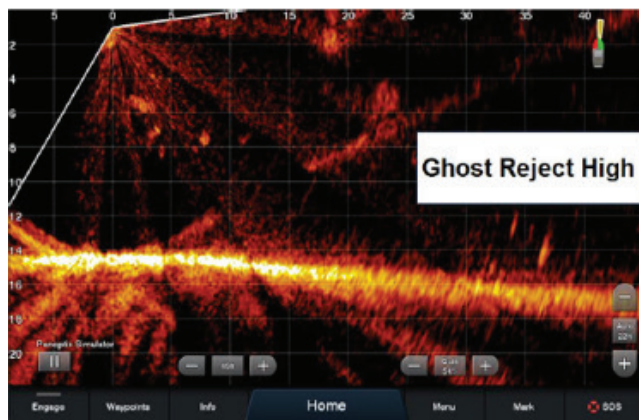
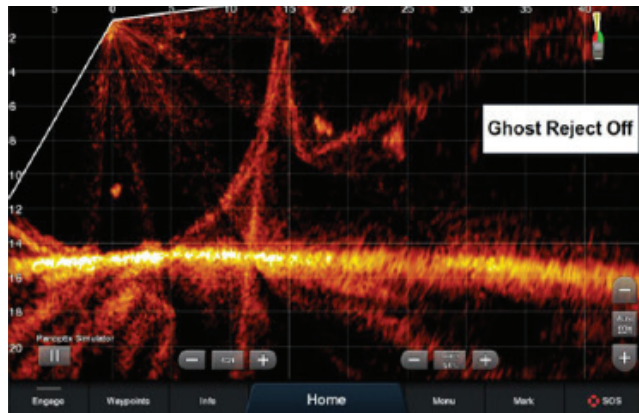
PRODUCT UPDATE

Ghost Reject

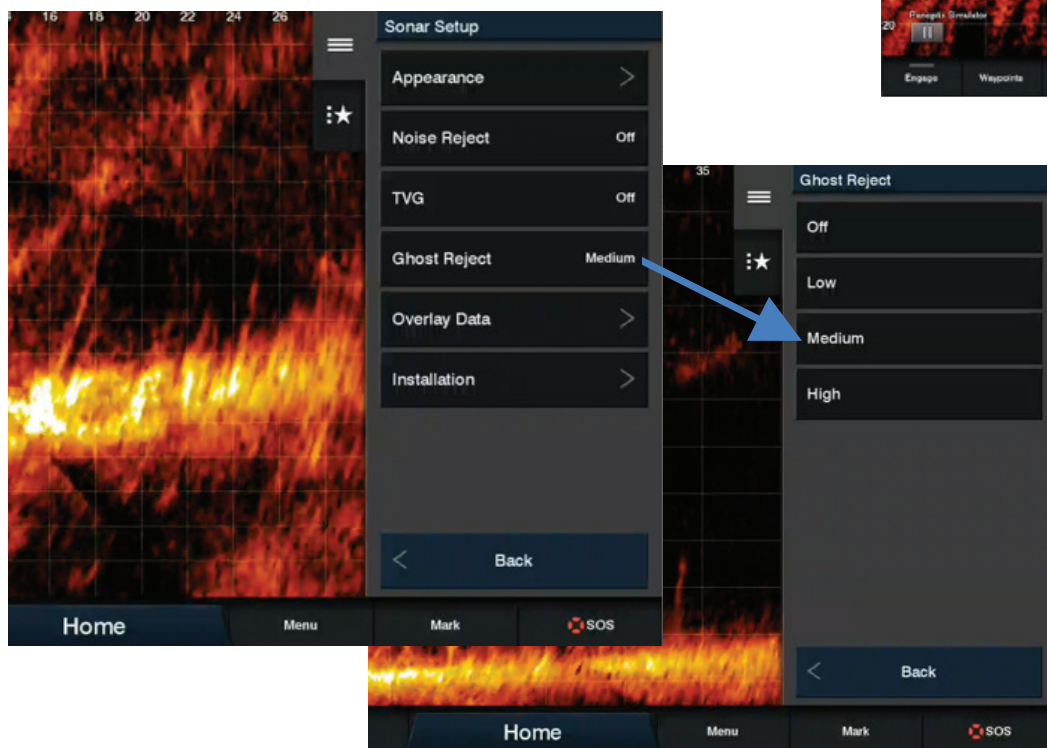
The Ghost Tree issue is a side effect of strong sonar returns creating interference on screen. Current solutions, like using Noise Rejection, can create a blind spot where the Ghost image was located.



The new "Ghost Reject" setting steers more of the transmit power forward, which reduces the bottom return strength and therefore the interference that generates the interference that creates the Ghost Tree.



Users can toggle the "Ghost Reject" setting to off, low, medium or high. Ghost Reject will decrease the interference that creates the ghost tree.



OCTOBER 2020 MARINE SOFTWARE UPDATE

PRODUCT UPDATE

NMEA 2000® GPS Performance

A new setting reduces the amount of GPS data on the NMEA 2000 network by limiting the number of MFDs that will share internal GPS data on the NMEA 2000 network:

- Auto means that one MFD will automatically bridge its GPS data on the NMEA 2000 network
- Manual allows the user to specify which devices should share internal GPS data on the NMEA 2000 network

These controls have been added to the Skyview Page when the MFD is using its internal GPS source.

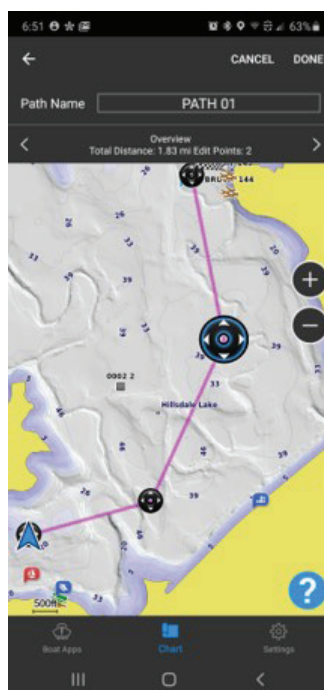
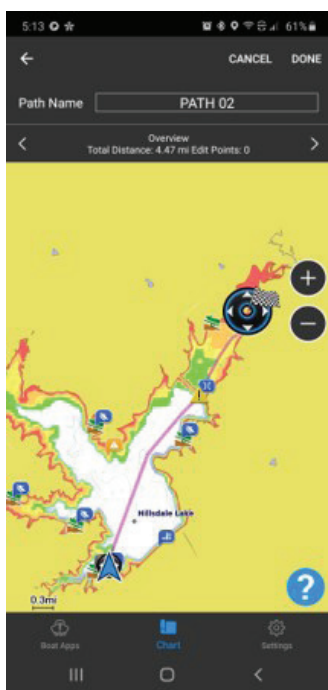
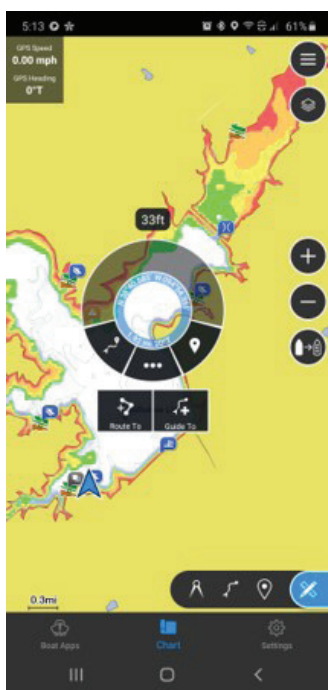
Fixed Touch Output to Windows 10

This software update ensures that the touch output feature on some Garmin MFDs works with Windows 10 devices.



Auto Guidance® on ActiveCaptain app

Users can now plan Auto Guidance paths in the ActiveCaptain app, save them as a route, and upload them onto their chartplotter.



OCTOBER 2020 MARINE SOFTWARE UPDATE

PRODUCT UPDATE

Update Feature Matrix

	GPSMAP 8400/8600 Series	GPSMAP 7x2/9x2/12x2 Plus Series	GPSMAP 7x2/9x2/12x2 Series	GPSMAP 10x2/12x2 Keyed Series	GPSMAP 7x3/9x3/12x3 Series	ECHOMAP™ UHD 6x Series	ECHOMAP UHD 7x and 9x Series	ECHOMAP Ultra Series	ActiveCaptain App
Software Updates via Garmin Express™	x	x	x	x	x	x	x	x	
New Vivid Sonar Color Palettes	x	x	x	x	x	x	x	x	
Auto Guidance in ActiveCaptain® app	x	x	x	x	x	x	x	x	x
Software Support for new GT36UHD-TM and GT56UHD-TM transducers	x				x		x	x	
Ghost Reject Feature	x	x	x	x	x		x	x	
NMEA 2000' GPS Performance	x	x	x	x	x		x	x	
Fixed Touch Output to Windows 10	x								