

MAY 2020 MARINE SOFTWARE UPDATE

PRODUCT UPDATE



In an ongoing effort to improve our products and provide enhanced features to existing users, we are excited to announce the May 2020 marine software update. It provides improved functionality and new features for the ECHOMAP™ Plus combos, ECHOMAP UHD combos, ECHOMAP Ultra combos, GPSMAP® 7x2, 9x2, 10x2, 12x2, 12x2 Touch and 7400/7600 chartplotters and GPSMAP 8400/8600 premium glass helm chartplotters.

Visit [Garmin.com](https://www.garmin.com), or tap on the “My Marine Devices” option from the ActiveCaptain® app for a free download of the software update. If you would like to purchase the update on a preloaded data card shipped directly from Garmin; visit [Garmin.com](https://www.garmin.com) for more information.

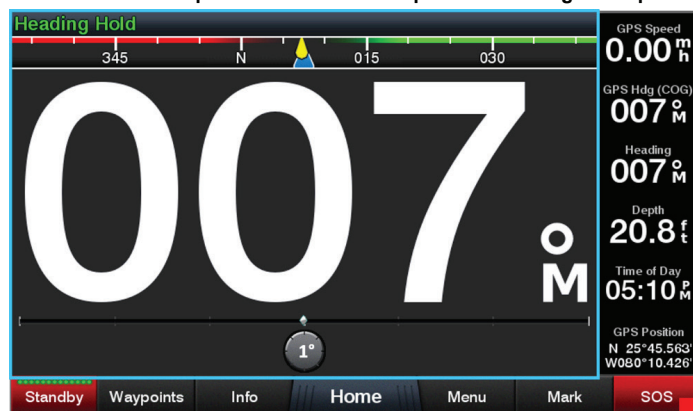
For the most up to date chart data available, visit marinesupport.garmin.com to find information on updating your device's charts, or tap on the “Download Charts” option from the ActiveCaptain app to see what is available. For other options and more information on available marine charts visit our [Marine Charts and Maps webpage](https://www.garmin.com/marine-charts).

Please see below for a few featured highlights found in the update as well as a detailed reference table at the end of the document.

Autopilot UX Improvements — Keyed Quick Adjustment

This feature allows the user to adjust the heading of the vessel while using a knob on either a keyed MFD device or a GRID™ 20 device. This feature is only available when the autopilot virtual devices are selected; otherwise, the GRID performs as normal.

Rotate knob CCW to adjust heading to port and CW to adjust heading to starboard. Each step in the rotation corresponds to a 1-degree step turn.



When the “Rudr” knob is pressed, the knob setting will change to rudder steering. Use the left/right buttons on the directional pad to perform rudder steering.



To perform rudder steering with a touchscreen MFD with GRID 20 knob connected: Hold the GRID 20 joystick left/right to perform rudder steering.

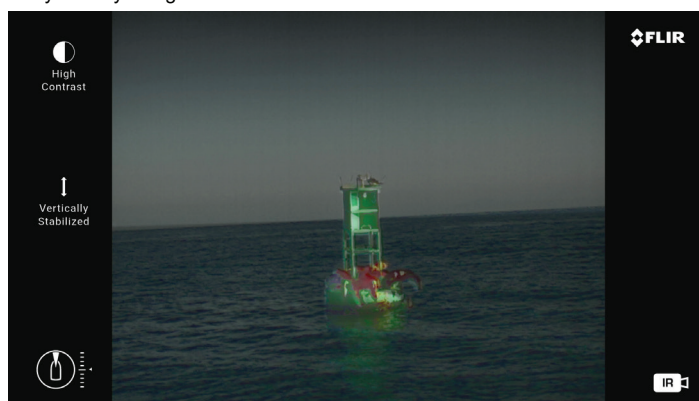
To perform rudder steering with a keyed MFD (with no GRID 20 connected): Use the left/right buttons on the directional pad to perform rudder steering.

FLIR M300 Phase 2 New Feature Support

Support for FLIR MSX: This feature extracts edges and borders from HD visible camera and blends these into a thermal image.



Support for Color Thermal Vision (CTV): The CTV feature blends visible camera details with a thermal image, overlaying vital color imagery that allows captains to positively identify navigation aids and other vessels within the thermal scene.

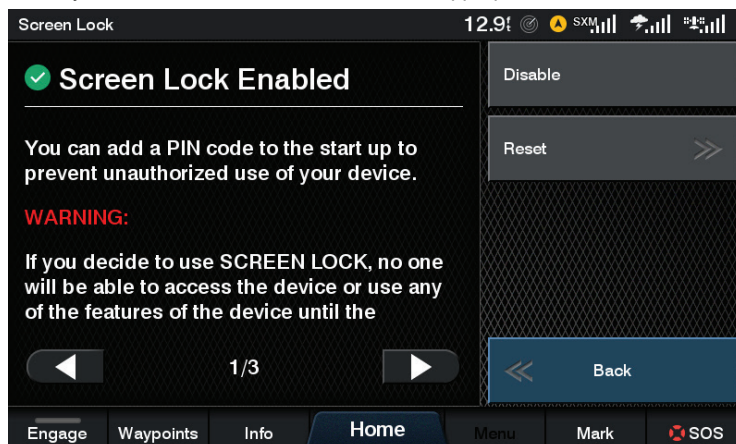
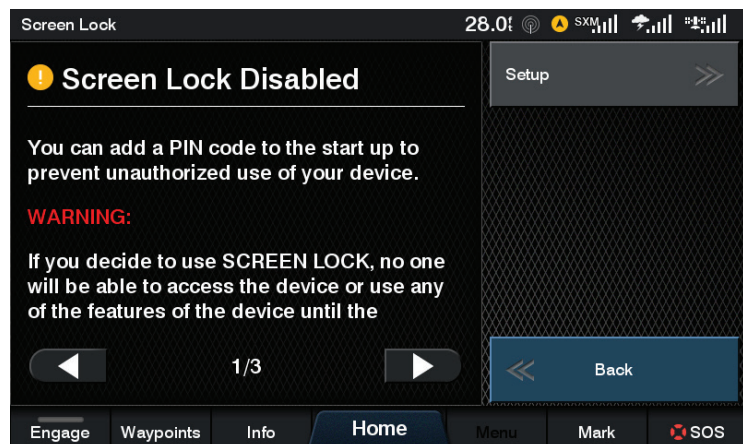


MAY 2020 MARINE SOFTWARE UPDATE

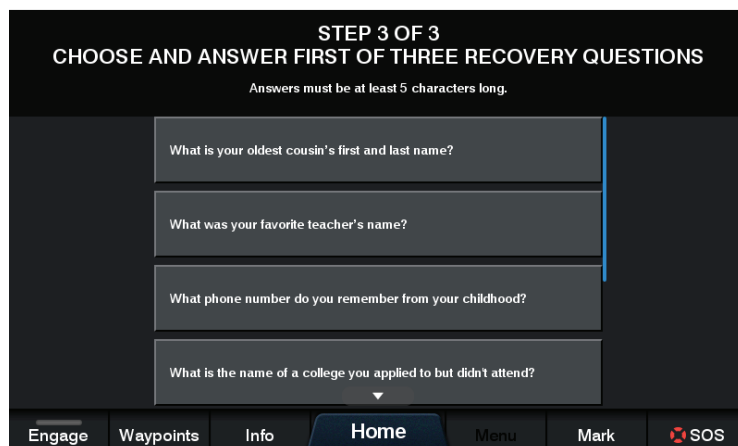
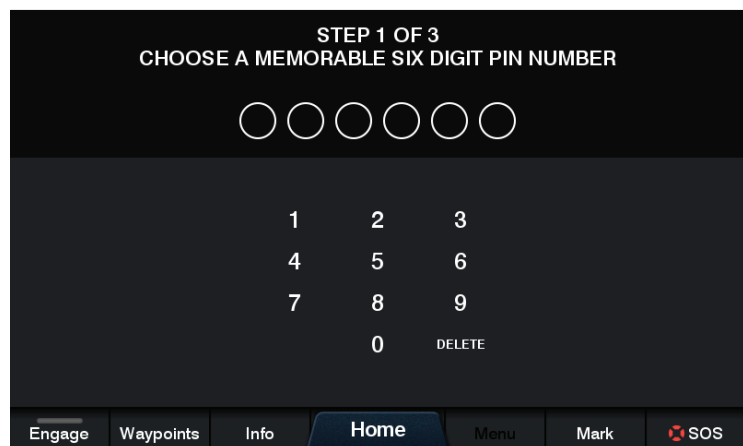
PRODUCT UPDATE

Garmin Lock/Pin Code

If a user decides to utilize the screen lock, no one will be able to access the device or use any of the features of the device until the appropriate PIN code is entered.

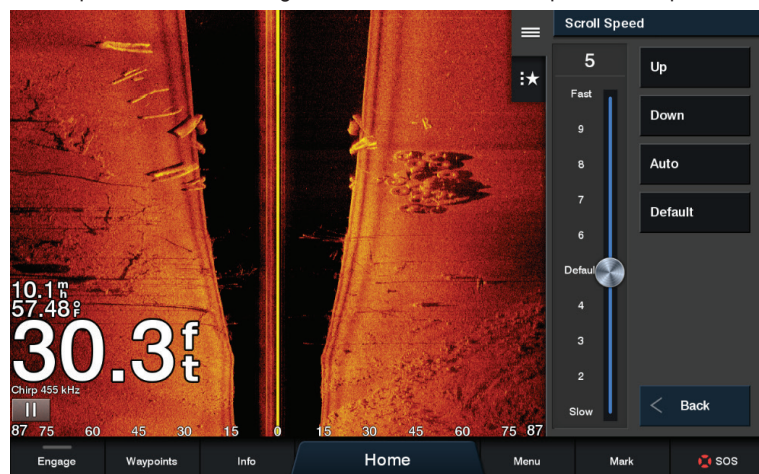


PIN code users must choose and verify a memorable six-digit PIN as well as choosing three PIN recovery questions. Users can select from standard question options or create a unique custom question. PIN recovery questions are required to reset a forgotten PIN code. Garmin will not be able to reset or access any device if the user is unable to remember a PIN code.



Scroll Rate Improvements

Scroll speed changes were made to improve the clarity of ClearVü and SideVü scanning sonars. Each MFD will scroll sonar at an optimal scroll speed when using the default/normal scroll speed. This removes potential blurriness in the image. Garmin recommends using normal scroll speed, which is scroll rate #5. The default scroll speed value was changed from 4 to 5. Auto scroll speed was improved to have a slightly faster scroll speed.

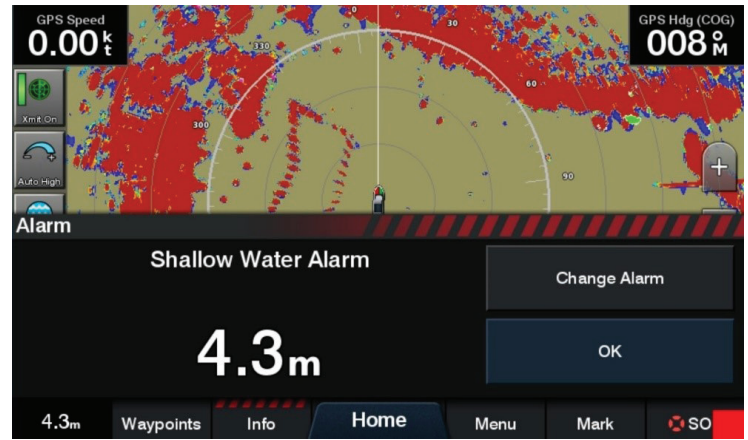
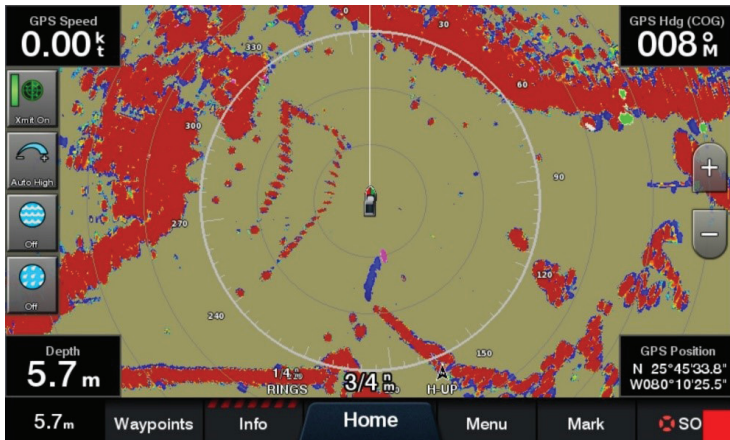


MAY 2020 MARINE SOFTWARE UPDATE

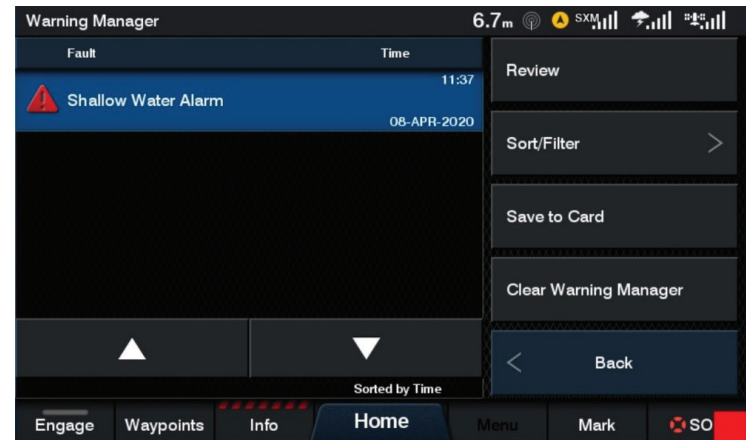
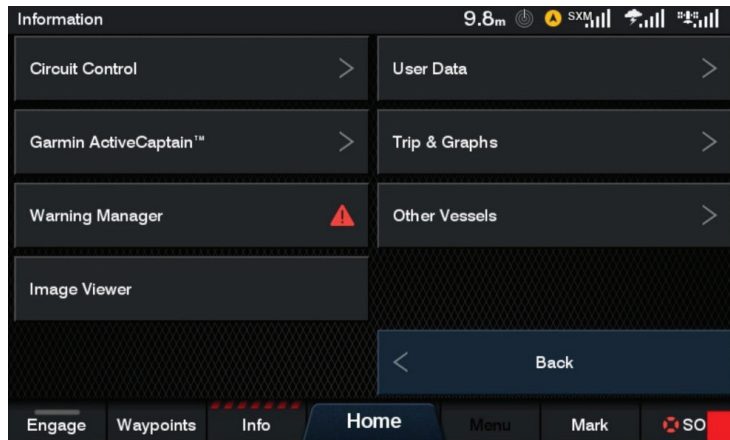
PRODUCT UPDATE

Improve Awareness of Active Alarms

For most red and yellow level alarms, a series of LEDs will appear above the **Info** button on the SCC. This light stays there until the error conditions clear.



If a user clicks on the **Info** button, they will see an icon on the warning manager that matches the color of the LEDs. To clear the alarm, the user must go into the warning manager and select **Clear Warning Manager**.



Update Feature Matrix

	GPSMAP® 7400/7600 Series	GPSMAP 8400/8600 Series	GPSMAP 8400/8600xsv Series	GPSMAP 7x2/9x2/10x2/12x2 Plus Series	GPSMAP 7x2/9x2/10x2/12x2 Series	GPSMAP 12x2 Touch Series	ECHOMAP™ Plus Series	ECHOMAP UHD Series	ECHOMAP Ultra Series
Autopilot UX improvement — keyed quick adjustment	x	x	x	x	x	x			
FLIR M300 phase 2 new feature support	x	x	x	x	x	x			
Garmin lock/pin code	x	x	x	x	x	x			
Scroll rate improvements	x	x	x	x	x	x	x	x	x
Improve awareness of active alarms	x	x	x	x	x	x			