

AUGUST 2020 MARINE SOFTWARE UPDATE

PRODUCT UPDATE



In an ongoing effort to improve our products and provide enhanced features to existing users, we are excited to announce the August 2020 marine software update. It provides improved functionality and new features for the ECHOMAP™ Plus combos, ECHOMAP UHD combos, ECHOMAP Ultra combos, GPSMAP® 7x2, 9x2, 10x2, 12x2, 12x2 Touch and 7400/7600 chartplotters and GPSMAP 8400/8600 premium glass helm chartplotters.

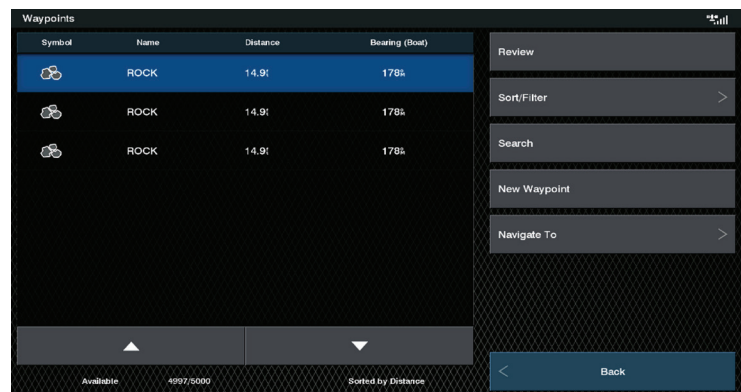
Visit Garmin.com, or tap on the “My Marine Devices” option from the ActiveCaptain® app for a free download of the software update. If you would like to purchase the update on a preloaded data card shipped directly from Garmin, visit Garmin.com for more information.

For the most up to date chart data available, visit marinesupport.garmin.com to find information on updating your device's charts, or tap on the “Download Charts” option from the ActiveCaptain app to see what is available. For other options and more information on available marine charts visit our [Marine Charts and Maps webpage](#).

Please see below for a few featured highlights found in the update as well as a detailed reference table at the end of the document.

Multiple Waypoints with the Same Name

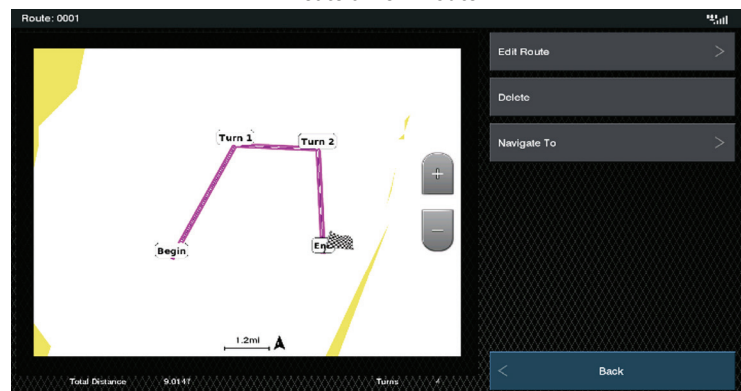
Customers can now have an unlimited number of waypoints with the same name or symbol.



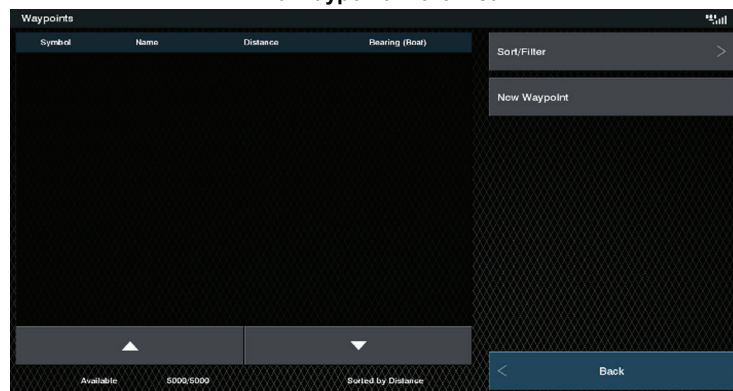
Route Creation

Users can now create and save routes without auto-generating waypoints for every turn on the route.

Create a New Route



No Waypoint in the List

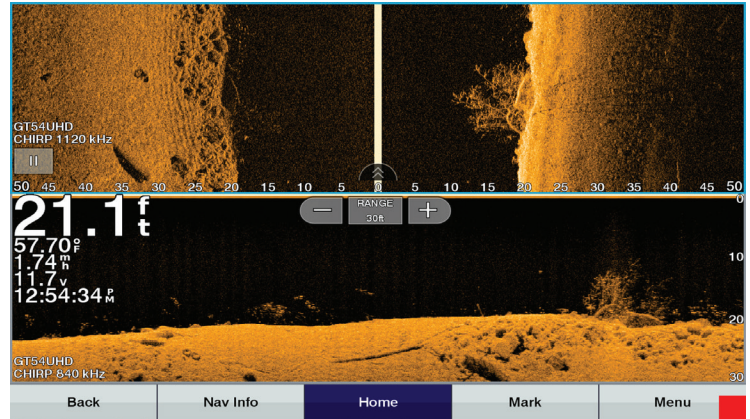
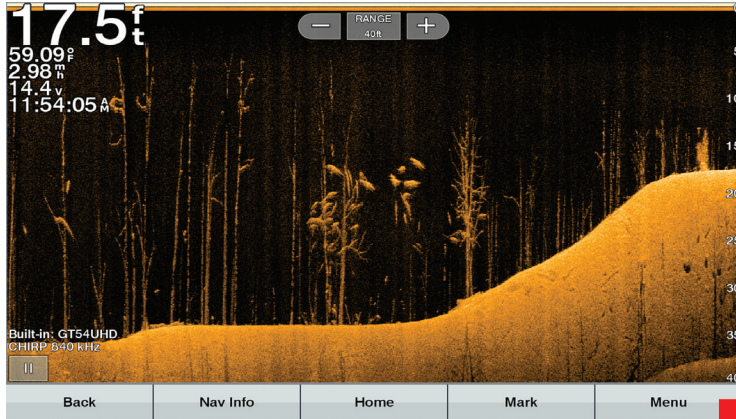


AUGUST 2020 MARINE SOFTWARE UPDATE

PRODUCT UPDATE

Sonar Improvements: Improved Rep Rate on Scanning Sonar

The sonar transmit rate has increased ~10-20%, resulting in sonar targets that appear thicker and easier to see. The increased rep rate also puts more pings onto a single target, allowing them to display on screen with more detail and greater clarity and improved shadows.

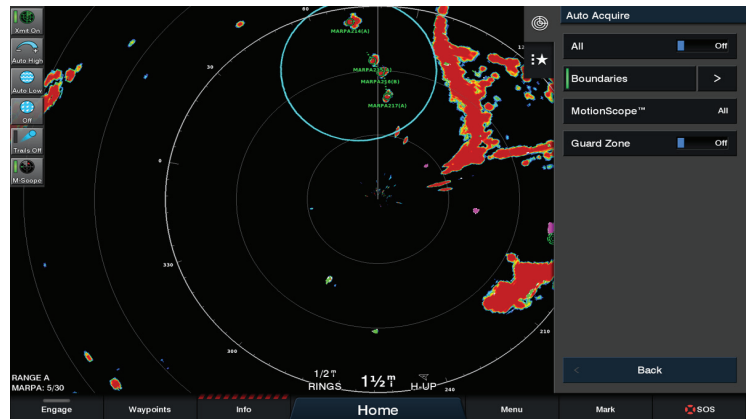


MARPA Auto Acquisition Improvements

In addition to existing manual MARPA option, detection can be automatically triggered based on:

- All returns
- Boundary Zones
- MotionScope
- Guard zones

All MARPA-capable radar will get this software update.



Autopilot: Powerboat Response

Users can now adjust the autopilot response outside of rudder gains and autotune on power boats. This feature replaces the old Power Mode and Power Saver options.

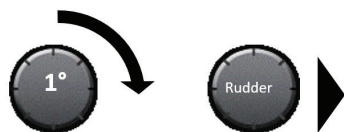


AUGUST 2020 MARINE SOFTWARE UPDATE

PRODUCT UPDATE

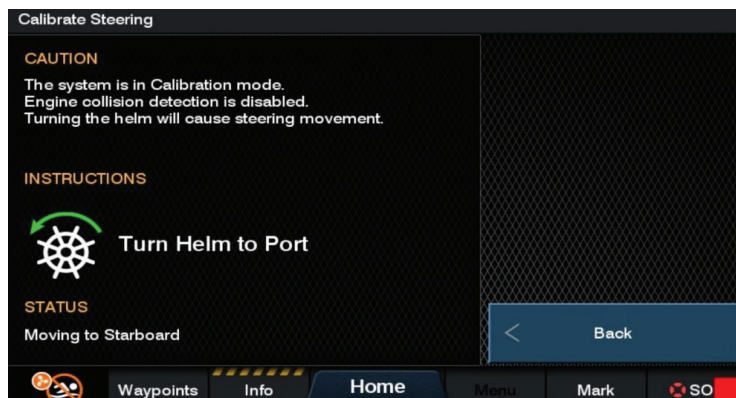
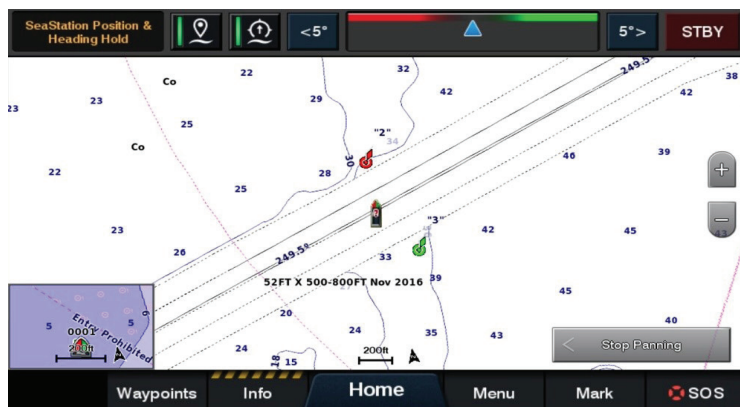
Autopilot: GRID 20 Knob Heading Adjustment

After setting focus on the AP page or combo, users can now utilize the GRID 20 Knob for 1 degree steps. Pressing knob toggles to rudder steer option via joystick; pressing knob again to Response. The feature times out after 6 seconds. These 1 degree steps are also now available on keyed MFD knobs.



Optimus Integration

Advanced Dometic Optimus Integration includes an overlay bar that allows complete control of SeaWays and SeaStation Optimus systems and removes the need for a separate Dometic display. Also included are all necessary calibration and fault notification interactions for this to be a complete display solution.



AUGUST 2020 MARINE SOFTWARE UPDATE

PRODUCT UPDATE

Update Feature Matrix

	GPSMAP® 7400/7600 Series	GPSMAP 8400/8600 Series	GPSMAP 8400/8600xsv Series	GPSMAP 7x2/9x2/10x2/12x2 Plus Series	GPSMAP 7x2/9x2/10x2/12x2 Series	ECHOMAP™ UHD 6x Series	ECHOMAP UHD 7x and 9xSeries	ECHOMAP Ultra Series	ActiveCaptain App
User data 2.0: Waypoints & Routes Updates	x	x	x	x	x		x	x	x
MARPA Auto Acquisition Improvements	x	x	x	x	x				
Sonar Improvements: Transducer Selection	x	x	x	x	x		x	x	
Sonar Improvements: Improve Rep Rate on Scanning Sonar			x					x	
Sonar Improvements: Preferred Depth/Temp Source Selection	x	x	x	x	x		x	x	
Panoptix LiveScope: Prioritize shared MFD traditional/CV sonar over a LiveScope transducer		x	x	x	x		x	x	
Autopilot: Powerboat Response	x	x	x	x	x	x	x	x	
Autopilot: GRID 20 Knob Heading Adjustment	x	x	x	x	x				
SeaStar - Optimus integration	x	x	x	x	x				