

NOVEMBER 2019 MARINE SOFTWARE UPDATE

PRODUCT UPDATE



In an ongoing effort to improve our products and provide enhanced features to existing users, we are excited to announce the November 2019 marine software update. It provides improved functionality and new features for the ECHOMAP™ Plus combos, ECHOMAP UHD combos, ECHOMAP Ultra combos, GPSMAP® 7x2, 9x2, 10x2, 12x2, 12x2 Touch and 7400/7600 chartplotters and GPSMAP 8400/8600 premium glass helm chartplotters.

Visit Garmin.com, or use the ActiveCaptain® app for a free download of the software update, or purchase the update on a preloaded data card shipped from Garmin.

Please see below for a few featured highlights found in the update as well as a detailed reference table at the end of the document.

New Relief Shading Chart Icon on Homepage

The relief shading chart option is available with a BlueChart® g3 Vision and LakeVü g3 Ultra premium chart card. This chart utilizes unique default settings to highlight the detail of the charts and improve usability. In addition, the relief shading chart allows for shallow water shading to be turned off without impacting shallow shading of navigation and fishing charts.

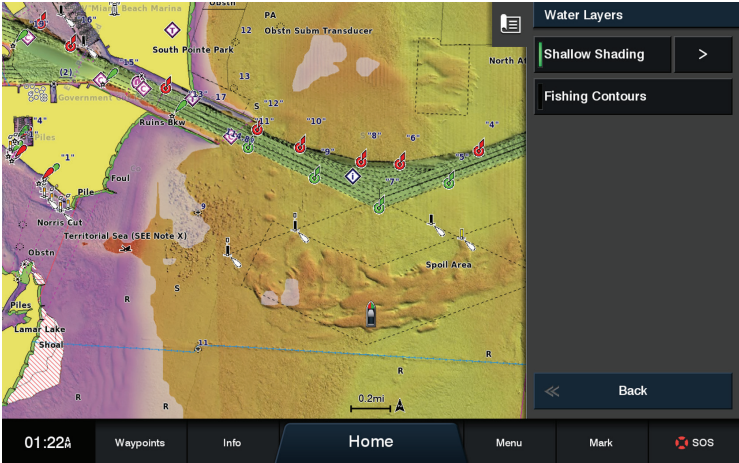
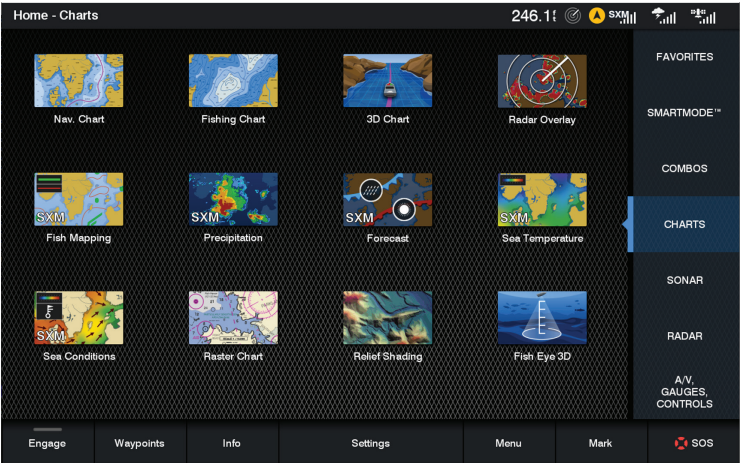
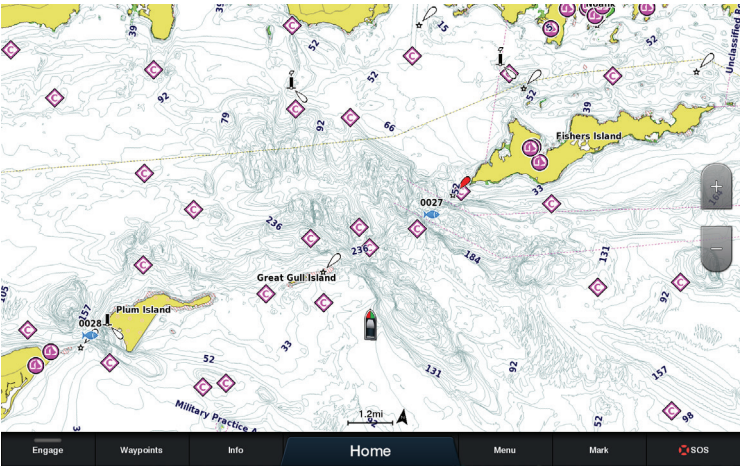


Chart Performance Improvements

This feature increases cache size for map data and improves the map drawing speed up to 3 times, depending on the density of data.

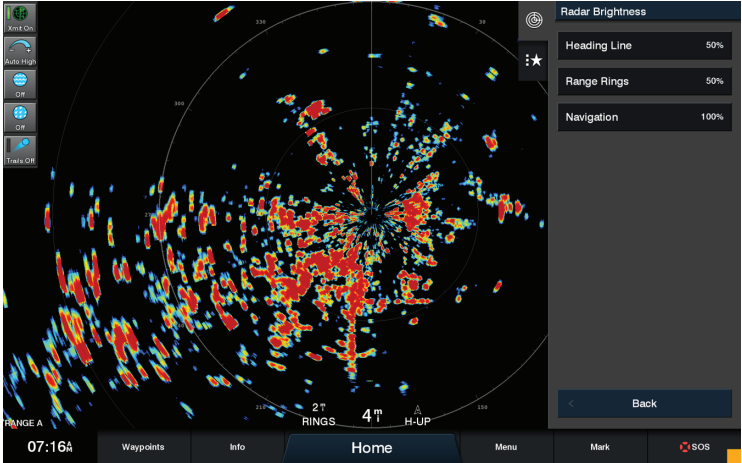
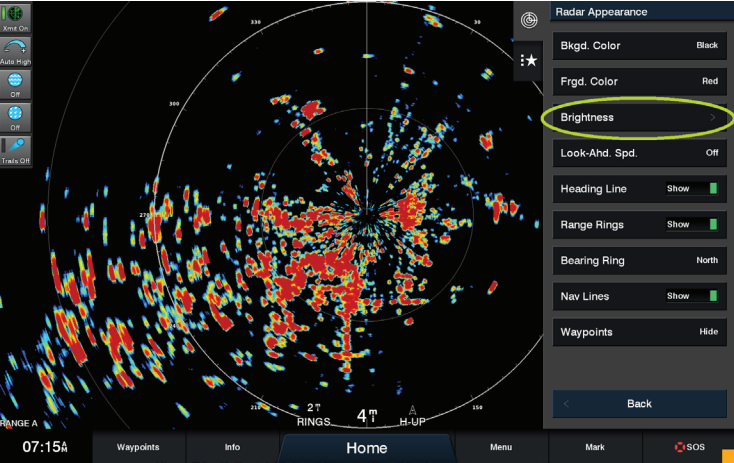


NOVEMBER 2019 MARINE SOFTWARE UPDATE

PRODUCT UPDATE

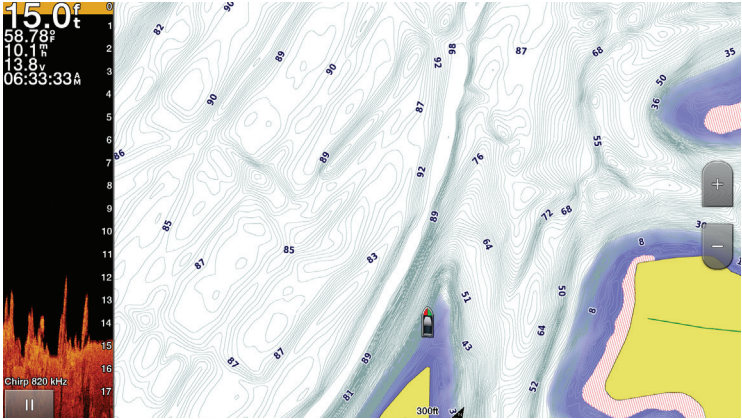
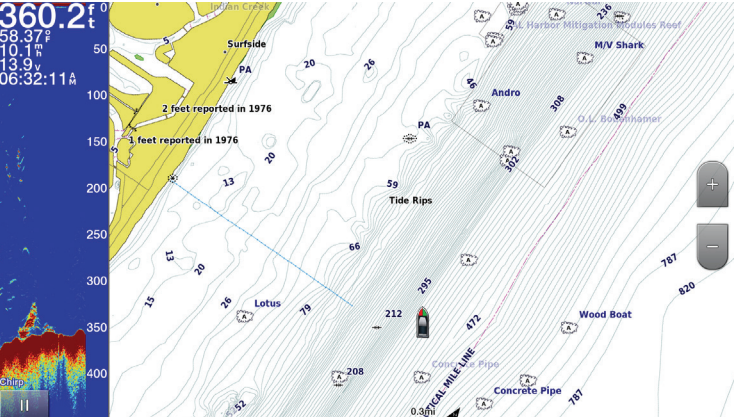
Radar Brightness Settings

These settings allow the user to independently dim the heading line, range rings or navigation lines.



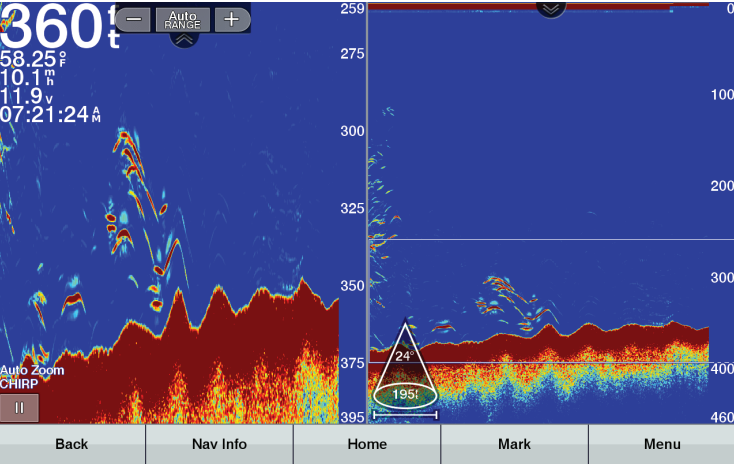
Less Than One-third Screen Sonar Combination

The traditional and ClearVü sonar functions can be minimized to less than one-third of the screen while maximizing other functions in the combo.



Dual On-screen Gain and Range Controls

Improve your ice fishing with on-screen gain and range controls for ECHOMAP™ ice fishing bundles. In addition, frequency cone angle and beam coverage are now available on-screen with a touch through adjustment settings.



NOVEMBER 2019 MARINE SOFTWARE UPDATE

PRODUCT UPDATE

Update Feature Matrix

	GPSMAP® 7400/7600 Series	GPSMAP 8400/8600 Series	GPSMAP 8400/8600xsv Series	GPSMAP 7x2/9x2/10x2/12x2 Plus Series	GPSMAP 7x2/9x2/10x2/12x2 Series	GPSMAP 12x2 Touch Series	ActiveCaptain® App	ECHOMAP™ Plus Series	ECHOMAP UHD Series	ECHOMAP Ultra Series
Relief Shading Maps	x	x	x	x	x	x	x	x	x	x
Chart Performance Improvements	x	x	x	x	x	x	x	x	x	x
RA 210 DSP Stereo-Chartplotter Integration	x	x	x	x	x	x		x	x	x
quatix® 5 Autopilot - Secure ANT Key Exchange	x	x	x	x	x	x				
Digital Switching Generic PGN Support	x	x	x	x	x	x		x	x	x
Evinrude - Add Joystick Support	x	x	x	x	x	x				
Radar Brightness Controls	x	x	x	x	x	x				
CV Transducer Support			x							x
Allow < 1/3 Screen Traditional and ClearVü Combos	x	x	x	x	x	x				
Split Zoom Page Update								x	x	x
Dual On-screen Control for Sonar Gain and Range								x	x	x