

JUNE 2019 MARINE SOFTWARE UPDATE

PRODUCT UPDATE



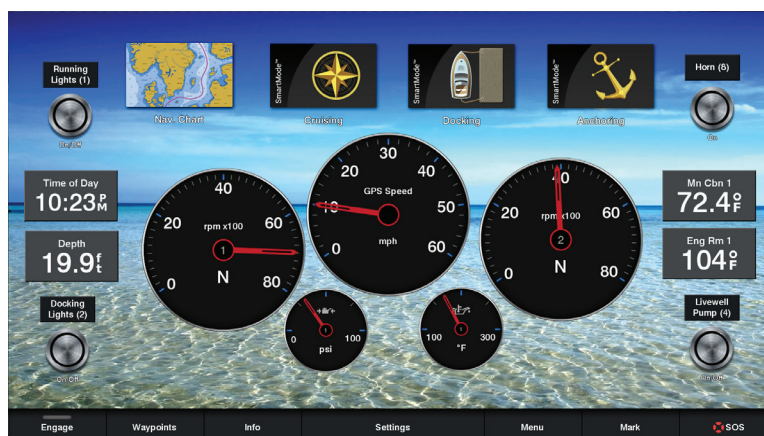
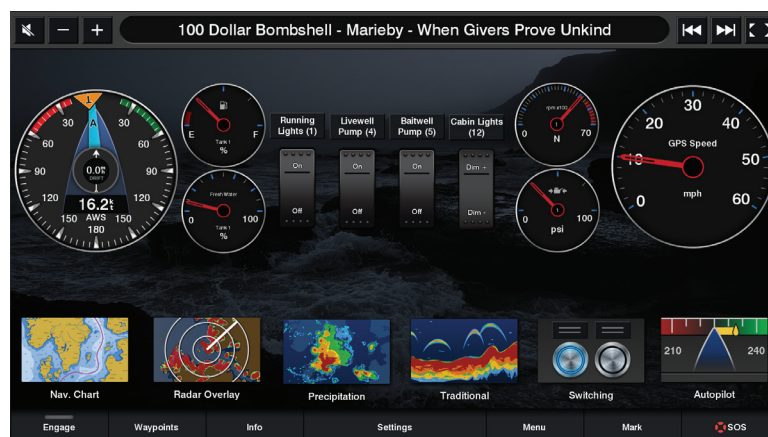
In an ongoing effort to improve our products and provide enhanced features to existing users, we are excited to announce the June 2019 marine software update. It provides improved functionality and new features for the GPSMAP® 7x2, 9x2, 10x2, 12x2, 12x2 Touch and 7400/7600 chartplotters and GPSMAP 8400/8600 premium glass helm chartplotters.

Visit Garmin.com, or use the ActiveCaptain® app for a free download of the software update, or purchase the update on a preloaded data card shipped from Garmin.

Please see below for a few featured highlights found in the update as well as a detailed reference table at the end of the document.

Custom Homepage

Easily create your custom homepage with custom function tiles, data fields and access to specific digital switching controls.

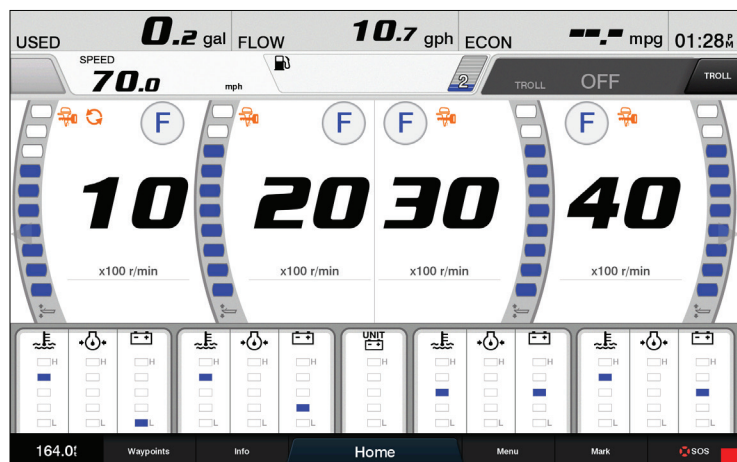


JUNE 2019 MARINE SOFTWARE UPDATE

PRODUCT UPDATE

Yamaha Engine Display

Display Yamaha engine information via a gateway with NMEA 2000® networking.



Update Feature Matrix

	GPSMAP® 7400/7600 Series	GPSMAP 8400/8600 Series	GPSMAP 8400/8600xsv Series	GPSMAP 7x2/9x2/10x2/12x2 Series	GPSMAP 12x2 Touch Series	ActiveCaptain® App
Connectivity						
Tracks in mobile						x
COEM						
Custom OEM Homepage		x	x	x	x	
Yamaha Engine Display via NMEA 2000 Gateway	x	x	x	x	x	