

AUGUST 2019 MARINE SOFTWARE UPDATE

PRODUCT UPDATE



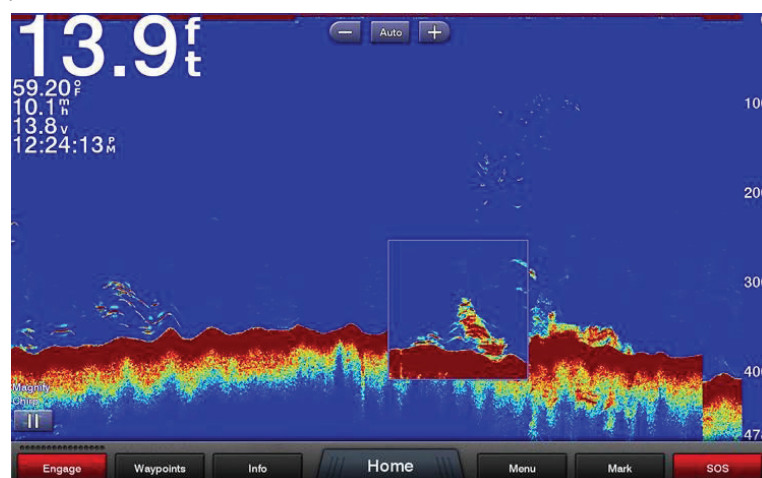
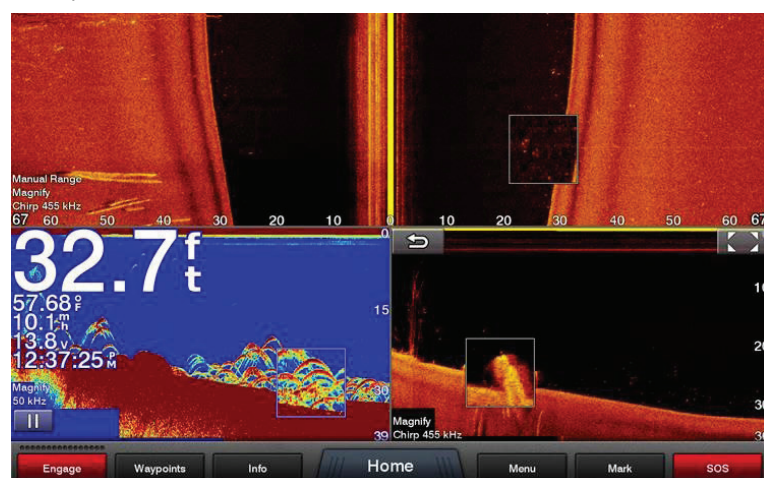
In an ongoing effort to improve our products and provide enhanced features to existing users, we are excited to announce the August 2019 marine software update. It provides improved functionality and new features for the ECHOMAP™ Plus and ECHOMAP Ultra chartplotters, GPSMAP® 7x2, 9x2, 10x2, 12x2, 12x2 Touch and 7400/7600 chartplotters and GPSMAP 8400/8600 premium glass helm chartplotters.

Visit Garmin.com, or use the ActiveCaptain® app for a free download of the software update, or purchase the update on a preloaded data card shipped from Garmin.

Please see below for a few featured highlights found in the update as well as a detailed reference table at the end of the document.

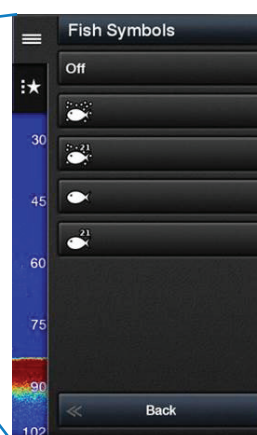
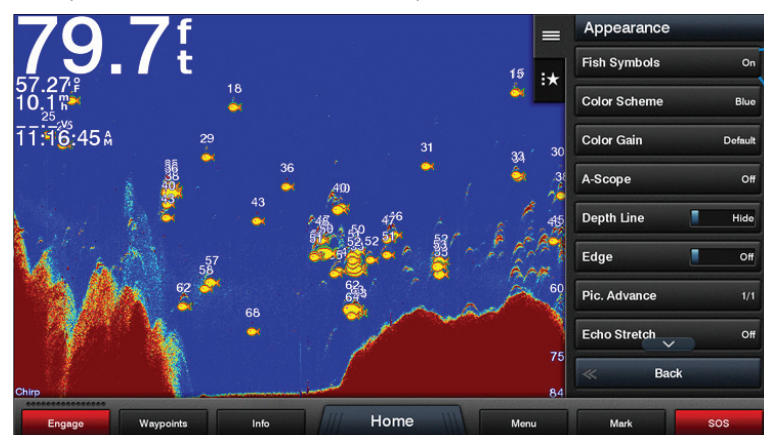
Sonar Zoom

The new pinch-to-zoom interface is for traditional and scanning sonar. Use this new feature in full or combo screens. This update is available for ECHOMAP Plus, ECHOMAP Ultra and GPSMAP chartplotters.



Fish Symbols

Fish symbols are back in GPSMAP chartplotters. Users may turn them on or off and choose between four symbol options. This update is available for GPSMAP chartplotters.



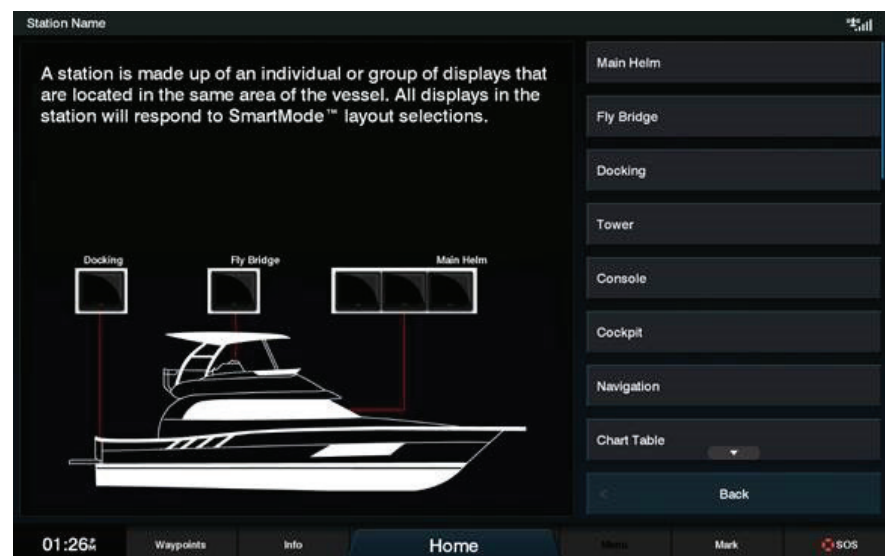
AUGUST 2019 MARINE SOFTWARE UPDATE

PRODUCT UPDATE

OneHelm™ Visibility by Station

OneHelm partners now have the ability to deliver multiple web apps from a single server and choose what station on the boat to display them on. They may customize the web apps for control from specific stations on the vessel or remove from certain stations.

This update is available for GPSMAP® chartplotters.



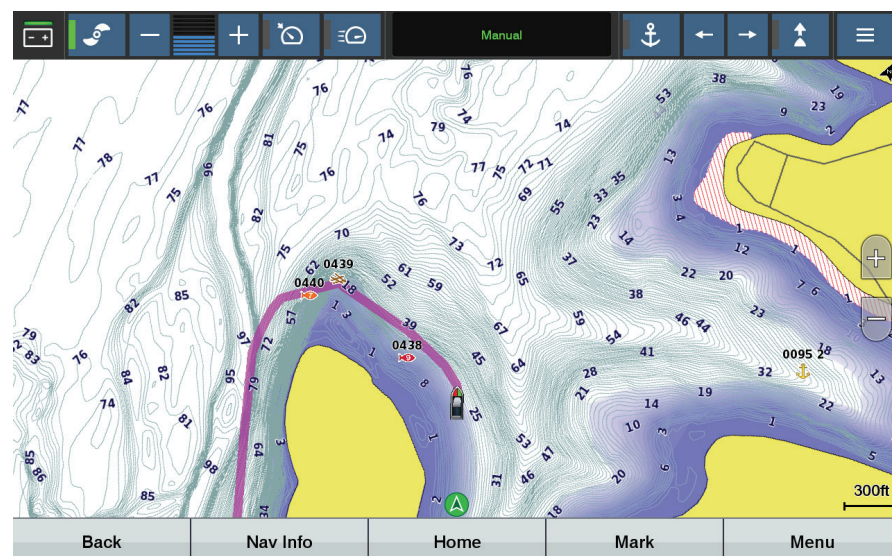
Hull ID

This new feature links the vessel hull identification number to Garmin products, simplifying the process of registering multiple vessels by the OEM and tracking of warranties by Garmin.

This update is available for ECHOMAP™ Plus, ECHOMAP Ultra and GPSMAP chartplotters.

Force™ Trolling Motor Compatibility

Compatible chartplotters can now integrate with the Force trolling motor, providing complete control of your Force™ with a trolling motor user interface. A wireless connection allows you to easily use the built-in autopilot and other key features



AUGUST 2019 MARINE SOFTWARE UPDATE

PRODUCT UPDATE

Updated Feature Matrix

	GPSMAP 7400/7600 Series	GPSMAP 8400/8600 Series	GPSMAP 8400/8600xsv Series	GPSMAP 7x2/9x2 Series	GPSMAP 10x2/12x2 Series	GPSMAP 12x2 Touch Series	ECHOMAP Plus Series	ECHOMAP Ultra Series
Autopilot								
Autopilot remote control software update from chartplotter	x	x	x	x	x	x		
Reactor™ Kicker autopilot control from chartplotter	x	x	x	x	x	x	x	x
Chartplotters								
Magnetic variance table updates	x	x	x	x	x	x	x	x
Trolling Motor								
Force™ trolling motor compatibility	x	x	x	x	x	x	x	x
Force trolling motor transducer support	x SideVü 1,200 kHz not supported	x SideVü 1,200 kHz not supported	x		x SideVü 1,200 kHz not supported	x SideVü 1,200 kHz not supported	x SideVü 1,200 kHz not supported	x
SiriusXM®								
GXM™ 54 weather antenna fish mapping	x	x	x	x	x	x		
OEM								
OneHelm visibility by station		x	x					
Hull ID	x	x	x	x	x	x	x	x
Sonar								
Sonar Zoom	x	x	x	x	x	x	x	x
Fish symbols	x	x	x	x	x	x	x	x
Transducer support								
Airmap P19/P32	x	x	x	x	x	x		x

Sirius, XM and all related marks and logos are trademarks of Sirius XM Radio Inc.