

APRIL 2019 MARINE SOFTWARE UPDATE

PRODUCT UPDATE



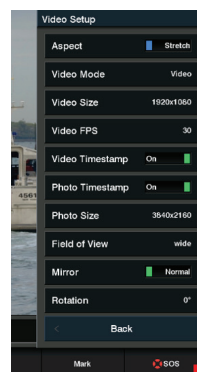
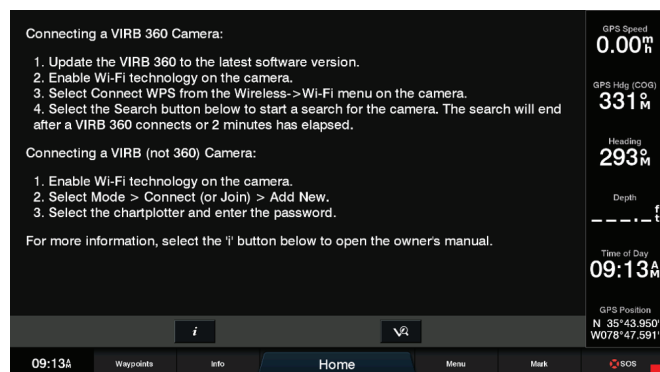
In an ongoing effort to improve our products and provide enhanced features to existing users, we are excited to announce the April 2019 marine software update. It provides improved functionality and new features for the GPSMAP® 7x2, 9x2, 10x2, 12x2, 12x2 Touch and 7400/7600 chartplotters, GPSMAP 8400/8600 premium glass helm chartplotters, ECHOMAP™ Plus 7" and 9" chartplotters and ECHOMAP Ultra 10" and 12" chartplotters.

Visit Garmin.com, or use the ActiveCaptain® app for a free download of the software update, or purchase the update on a preloaded data card shipped from Garmin.

Please see below for a few featured highlights found in the update as well as a detailed reference table at the end of the document.

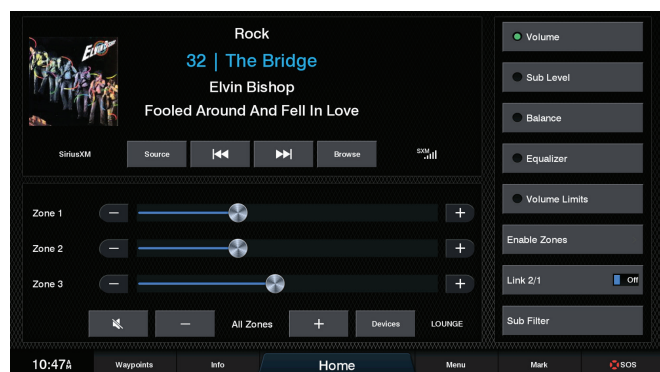
Directly Connect to a VIRB® 360 Camera

Users will no longer need the app to pair with a GPSMAP chartplotter. A time stamp option is now also available.



FUSION-Link™ 2.0 Ethernet Control

Adds support for Fusion Party Bus and Media Device Access, SRX400 and album art.



APRIL 2019 MARINE SOFTWARE UPDATE

PRODUCT UPDATE

Transducer Support

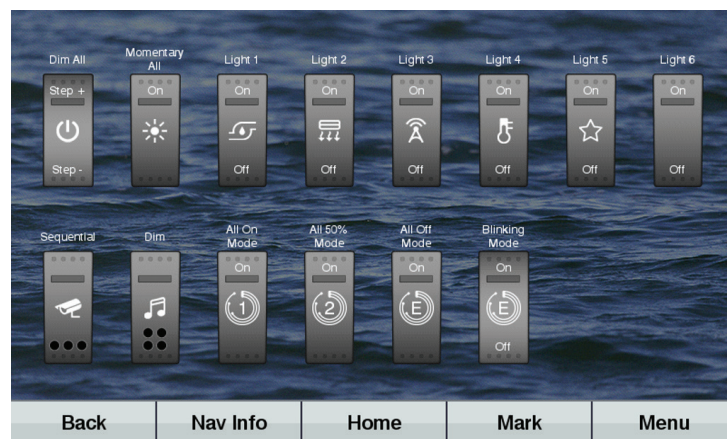
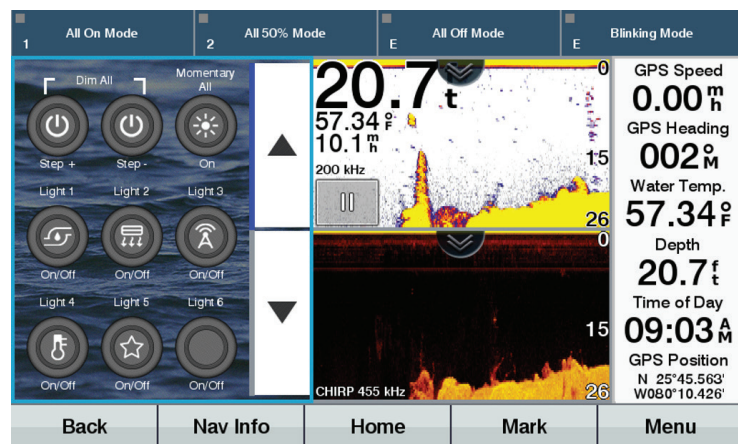
Airmar P75M and P95M transducers are now compatible with GPSMAP® chartplotters.

Virtual AtoN Support

Virtual AtoNs can now be viewed on GPSMAP, ECHOMAP™ Plus and ECHOMAP Ultra chartplotters.

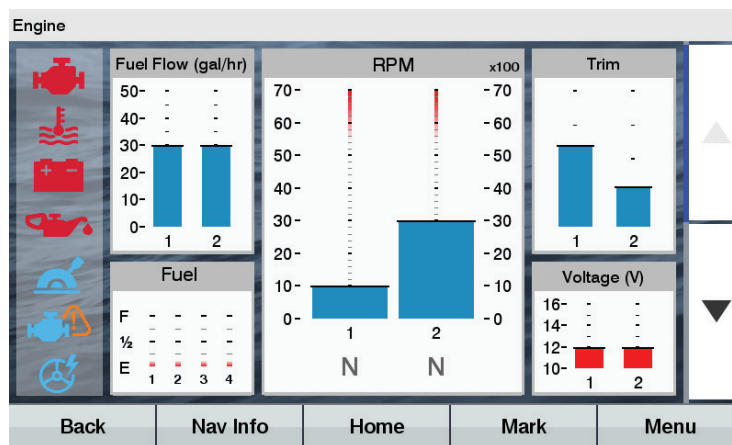
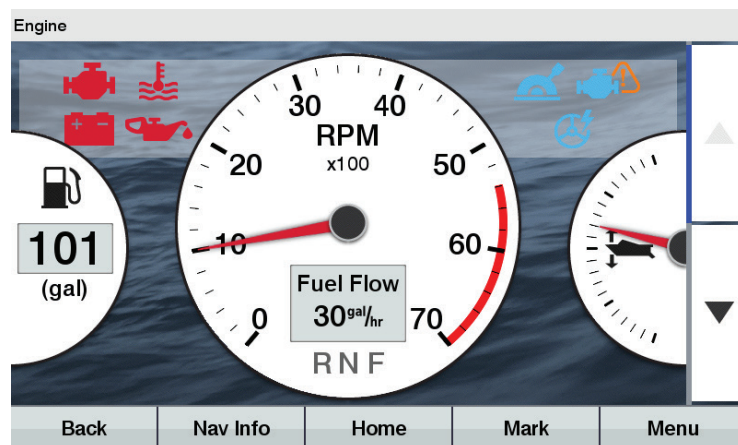
ECHOMAP Digital Switching Features

Digital switching features have been added to the ECHOMAP Plus 7" and 9" chartplotters and ECHOMAP Ultra 10" and 12" chartplotters. These devices will now support Czone and SeaStar switching.



ECHOMAP Evinrude Engine PGN Support

Engine data from Evinrude motors can now be displayed on ECHOMAP series, similar to how it is displayed on GPSMAP chartplotters.



APRIL 2019 MARINE SOFTWARE UPDATE

PRODUCT UPDATE

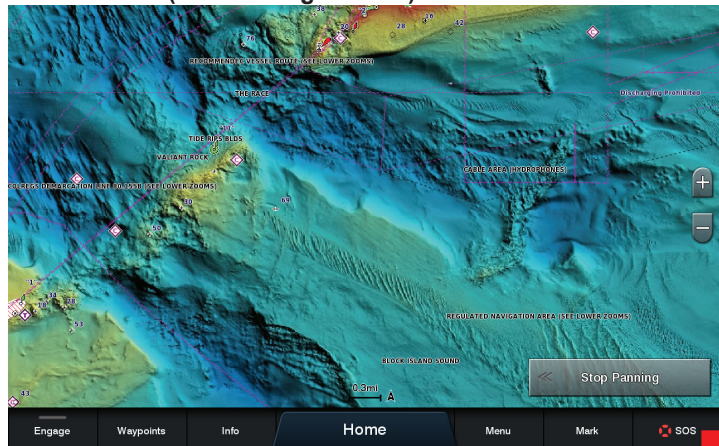
Cartography Features

High-resolution Relief Shading and raster cartography features are now available with this software update.

High-resolution Relief Shading is available in BlueChart® g3 Vision and LakeVü g3 Ultra accessory cards.

Raster cartography¹ is available for BlueChart® g3 and BlueChart g3 Vision cartography and can be downloaded through the ActiveCaptain® app.

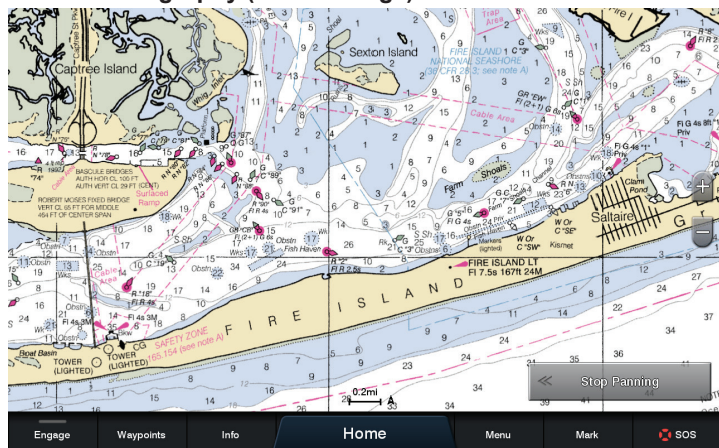
Relief Shading: The Race Between Long Island and Block Island Sound (BlueChart g3 Vision)



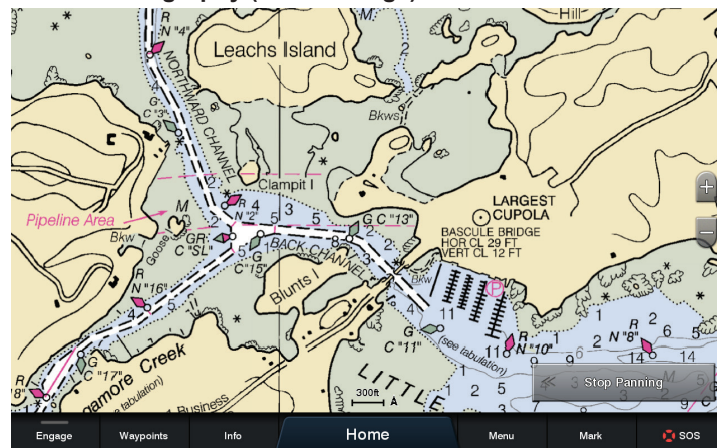
Relief Shading: Sam Rayburn (LakeVü g3 Ultra)



Raster Cartography (BlueChart g3)



Raster Cartography (BlueChart g3)



APRIL 2019 MARINE SOFTWARE UPDATE

PRODUCT UPDATE

Update Feature Matrix

	GPSMAP® 7400/7600 Series	GPSMAP 8400/8600 Series	GPSMAP 8400/8600xsv Series	GPSMAP 7x2/9x2/10x2/12x2 Series	GPSMAP 12x2 Touch Series	ECHOMAP™ Plus Series	ECHOMAP Ultra Series
Navigation							
Galileo support			Already supported			x	x
Camera/video							
VIRB® 360 direct pairing	x	x	x	x	x		
VIRB 360 time stamping	x	x	x	x	x		
Sonar							
Improved sonar scroll rates			Already supported			x	x
Sleep mode			Already supported			x	x
Airmar P75M/P95M support	x	x	x	x	x		
Cartography							
Relief Shading	x	x	x	x	x	x	x
Raster cartography ¹	x	x	x	x	x		
Autopilot							
Autopilot remote control support			Already supported			x	x
Third-party compass support			Already supported			x	x
Entertainment							
FUSION-Link™ 2.0 Ethernet control	x	x	x	x	x		
VHF/AIS							
Virtual AtoN support	x	x	x	x	x	x	x
ActiveCaptain® app							
ActiveCaptain Community information			Already supported			x	x
Smart notification message review			Already supported			x	x
Device features							
New background options						x	x
Faster bootup times		x	x	x	x	x	x
Other							
Czone/SeaStar support			Already supported			x	x
Evinrude engine support			Already supported			x	x
CAT engine support	x	x	x	x	x		
6-engine support	x	x	x	x	x		

¹For the echoMAP CHIRP and ECHOMAP Plus combos, raster cartography is available only through the ActiveCaptain mobile app.