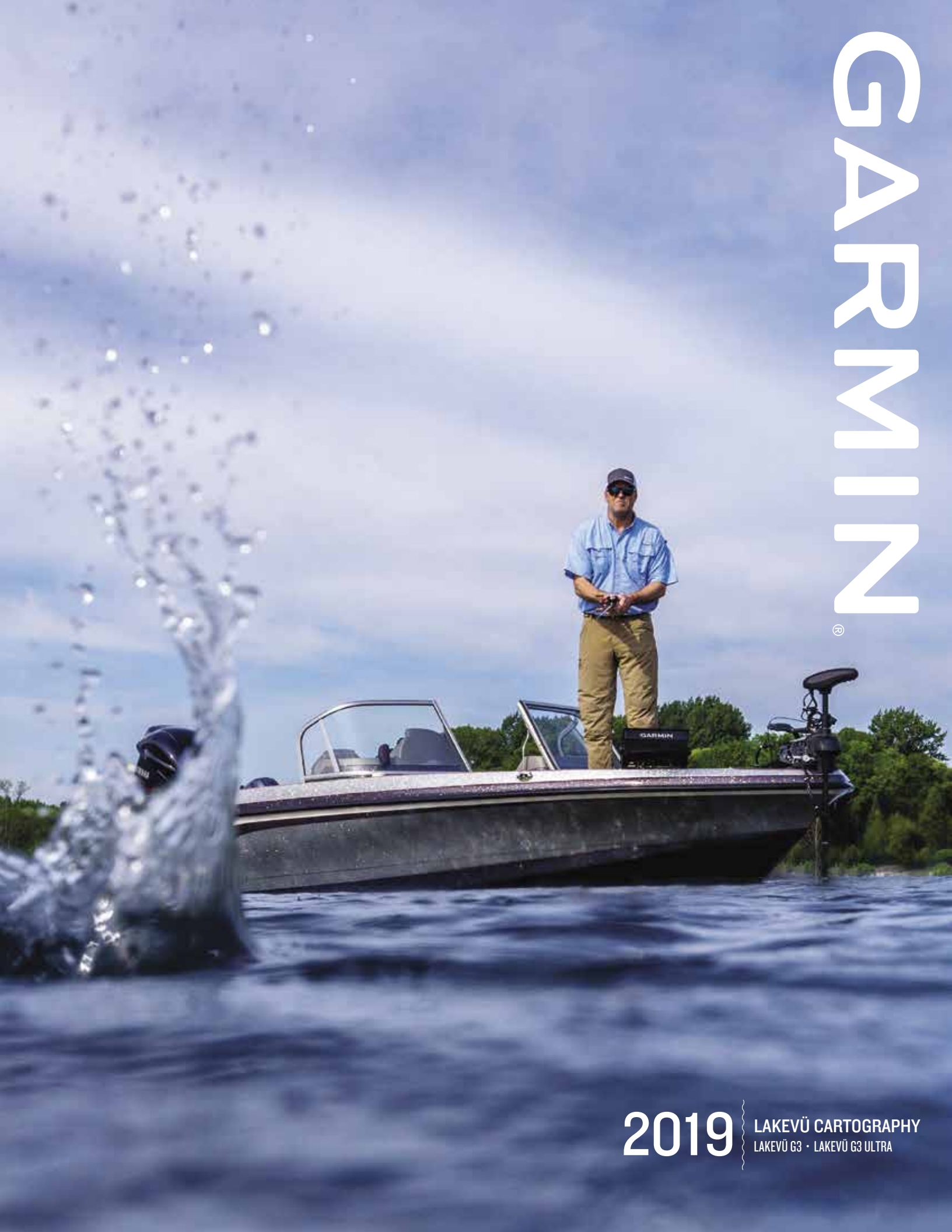


GARMIN®



2019

LAKEVÜ CARTOGRAPHY
LAKEVÜ G3 · LAKEVÜ G3 ULTRA

NEW

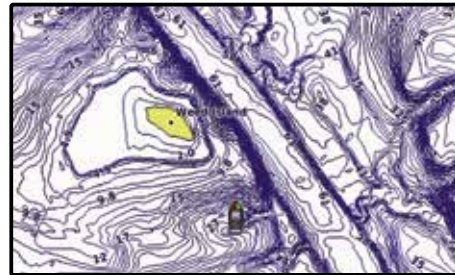
LAKEVÜ INLAND MAPS

FEATURING  NAVIONICS® DATA

LAKEVÜ G3 □

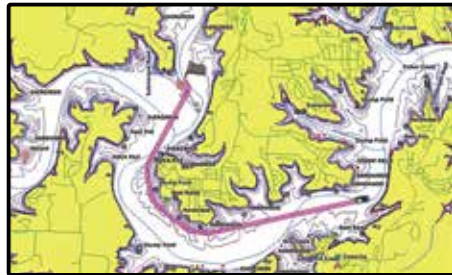
LakeVü g3 inland maps provide industry-leading coverage, clarity and detail with integrated Garmin and Navionics® content. The charts also calculate suggested routes with Auto Guidance¹. You'll get coverage on more than 17,000 lakes with up to 1' contours.

1' CONTOURS □ ■



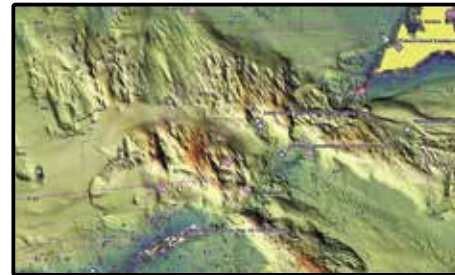
Up to 1' contours provide a detailed and clear view of the lake floor so you can catch more fish and navigate with confidence.

AUTO GUIDANCE □ ■



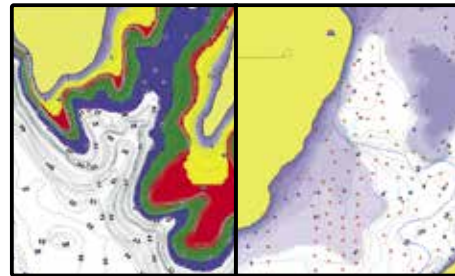
The charts also calculate suggested routes with Auto Guidance¹.

HIGH-RESOLUTION ELEVATION SHADING ■



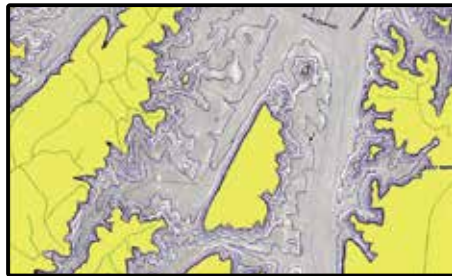
Highly detailed shading combines color and shadow to provide an easy-to-interpret, clearer view of bottom structure than contour lines alone.

DEPTH RANGE/SHALLOW WATER SHADING □ ■



High-resolution depth range shading for up to 10 depth ranges and shallow water shading for a user-defined depth gives a clear picture of shallow waters to avoid.

SONAR IMAGERY ■



Sonar imagery shows a nearly photographic view of the bottom, as if all the water had been drained away.

DYNAMIC LAKE LEVEL ■



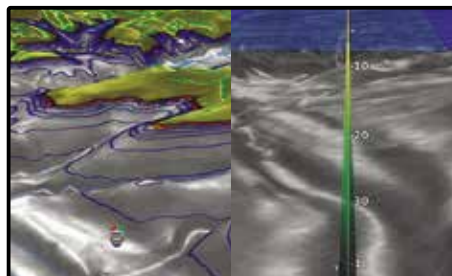
Adjust your maps to the lake's current water levels to see if spots are accessible or too shallow to explore.

HIGH-RESOLUTION SATELLITE IMAGERY ■



High-resolution satellite imagery provides superior situational awareness.

3-D VIEWS ■



MarinersEye and FishEye views provide 3-D representations of the surrounding area above and below the waterline.

LAKEVÜ G3 ULTRA ■

Our premium inland map collection, divided into East and West regions, includes all the industry-leading features of LakeVü g3, while adding extra mapping features such as high-resolution elevation shading and more than 150 Garmin Elite Survey Lakes.

Experience unparalleled coverage and brilliant detail when you're on the water. BlueChart® g3 coastal charts and LakeVü g3 inland maps now provide industry-leading coverage, clarity and detail with integrated Garmin and Navionics® content.

NEW

CANADA LAKEVÜ G3

FEATURING  NAVIONICS® DATA



Canada LakeVü g3 gives you coverage on more than 13,500 total lakes, 4,800 of which have up to 1' contours that provide clearer lake floor views, allowing you to catch more fish and navigate with confidence

Auto Guidance feature calculates suggested routes to a destination¹

Depth Range Shading enables you to view your target depth at a glance for up to 10 depth ranges

Shallow Water Shading lets you input and shade a minimum depth to help you avoid running aground

Displays detailed shorelines and coastlines as well as underwater features such as riverbeds, fish attractors and potential hazards

NEW

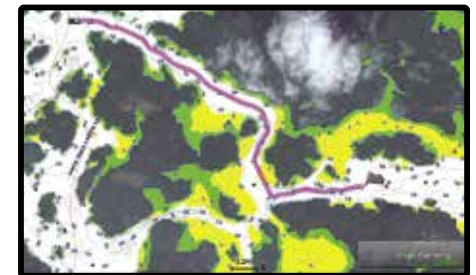
CANADA LAKEVÜ G3 ULTRA

Our premium inland maps for Canada include everything available with Canada LakeVü g3 and add:

High-resolution Relief Shading to make it easier to see contours and find fish holding structure

Unique 3-D views such as MarinersEye and FishEye for additional perspective both above and below the waterline

Dynamic Lake Level adjusts the map based on current water levels



ACTIVECAPTAIN® APP



Give yourself the advantages of the ultimate connected boating experience. Download the free all-in-one ActiveCaptain app. It provides you with a powerful connection to your Garmin chartplotter, charts, maps and the community. Wherever you are, you can have unlimited access to your cartography, purchase new maps and charts, and access the Garmin Quickdraw™ Contours Community.

SPECIAL ACTIVECAPTAIN FEATURES

OneChart™ gives you access to all your charts and maps from your mobile device and lets you purchase new ones

Receive smart notifications, such as calls and texts, on your chartplotter display when paired with the app

Download software updates and notifications from the app directly to your Garmin devices

Connect to fellow boaters with the ActiveCaptain community for up-to-date feedback on marinas and other points of interest

Make, save and transfer routes and waypoints between the app and chartplotter – with zero button presses¹

Easily upload and download the latest Garmin Quickdraw™ Contours content from the community – with zero button presses¹

View and control your chartplotter from your smartphone or tablet



UNITED STATES AND CANADA



NEW CHART GUARANTEE

Customers who purchase new preprogrammed Garmin LakeVü g3 or LakeVü g3 Ultra microSD™ cards are entitled to 1 free update² of the newest version of charts. If eligible, customers can update cards using our website. Updated charts will be for the same (or equivalent³) region as the original purchase.

DISCOUNTED CARD UPDATE PROGRAM

Customers may update their existing preprogrammed LakeVü g3 and LakeVü g3 Ultra microSD/SD card for a discounted price². Updated charts will be for the same (or equivalent³) region as the original purchase.

LAKEVÜ G3 COMPARISON

	United States LakeVü g3	United States East LakeVü g3 Ultra	United States West LakeVü g3 Ultra	Canada LakeVü g3	Canada LakeVü g3 Ultra
Region	LUS100F	LVUS106F	LVUS107F	LCA100F	LVCA100F
Title	LakeVü HD - U.S.	LakeVü g3 - East	LakeVü g3 Ultra - West	LakeVü HD - Canada	LakeVü HD Ultra - Canada
Part Number	010-C1087-00	010-C1204-00	010-C1205-00	010-C1113-00	010-C1114-00
Price	\$149.99	\$199.99	\$199.99	\$149.99	\$199.99

¹Zero button presses applies to GPSPMAP® chartplotters only. ²Limit 1 free update per card. New Chart Guarantee valid within 12 months of purchase. ³Equivalent region to be determined at the sole discretion of Garmin. Customer will have an opportunity to view available coverage before purchasing and/or updating.

Garmin LakeVü™ HD Ultra, and Garmin LakeVü™ HD Copyright and Warning Requirements:



WARNING

GARMIN MAKES NO WARRANTY AS TO THE ACCURACY OR COMPLETENESS OF MAP DATA IN THIS PRODUCT AND DISCLAIMS ANY AND ALL EXPRESS, IMPLIED OR STATUTORY WARRANTIES, INCLUDING ANY IMPLIED WARRANTY OF MERCHANTABILITY OR FITNESS FOR A PARTICULAR PURPOSE. IT IS THE USER'S RESPONSIBILITY TO USE THIS PRODUCT PRUDENTLY. THIS PRODUCT IS INTENDED TO BE USED ONLY AS A TRAVEL AID AND MUST NOT BE USED FOR ANY PURPOSE REQUIRING PRECISE MEASUREMENT OF DIRECTION, DISTANCE, LOCATION OR TOPOGRAPHY.

WARNING:

GARMIN BLUECHART DATA AND BOTTOM INFORMATION ARE FOR NAVIGATION REFERENCE ONLY, AS BOTTOM CONDITIONS ARE CONTINUALLY CHANGING. THIS PRODUCT IS FOR GENERAL REFERENCE.

WARNINGS: The electronic chart is an aid to navigation designed to facilitate the use of authorized government charts, not to replace them. Only official government charts and notices to mariners contain all information needed for the safety of navigation, and as always, the captain is responsible for their prudent use.

ACKNOWLEDGEMENT OF THIRD PARTY NOTICES AND COPYRIGHT LICENSES: This product may contain cartography and other data from one or more of the following Third Party sources; to the extent that any such source is used, the relevant provisions below shall apply:

"National Oceanic and Atmospheric Administration (NOAA)", "National Agriculture Imagery Program (NAIP)", "United States Army Corps of Engineers (USACE)", "United States Geological Survey (USGS), Digital Line Graphic (DLG), Digital Raster Graphic (DRG)", "Department of Natural Resources (DNR)", "United States Coast Guard (USCG)", "U.S. Department of Defense", "Central Intelligence Agency (CIA)", "U.S. Department of Commerce, Bureau of Public Roads & State's Highway Commission", "U.S. Department of Environmental Protection (DEP)", "U.S. Department of Transportation (DOT), Federal Aviation Administration (FAA)", "U.S. Department of Fish and Wildlife", "U.S. Department of Game and Fishing", "Ocean Mapping Group, Department of Geodesy and Geomatics Engineering, University of New Brunswick, US", "Pennsylvania Fish & Boat Commission (PFBC)", "Florida Natural Areas Inventory (FNAI)", "Florida Fish and Wildlife Conservation Commission (FWC)", "University of Florida, Institute of Food and Agricultural Sources", "North Carolina Wildlife Resources Commission (NCWRC)", "Embassy Cruising Guides", "New York State, Department of Environmental Conservation", "National Geophysical Data Center & Great Lakes Environmental Research Laboratory - Great Lakes Information Network", "Anthropocene Institute", "South Atlantic Fishery Management Council, US", "Kentucky Department of Fish and Wildlife Resources (KDFWR), U.S.", "Texas Parks and Wildlife Department, Artificial Reef Program, U.S.", "Texas Natural Resources Information System (TNRIS), US", "Texas Water Development Board (TWDB), US", "Lower Colorado River Authority, US", "Oklahoma Water Resources Board (OWRB), US", "Weiss Lake Improvement Association (WLIA), U.S.", "Mississippi Department of Marine Resources (MDMR), U.S.", "Waterway Guide Media LLC", "Contains information licensed under the Open Government Licence, Canada", "© Her Majesty the Queen in Right of Canada, Department of Natural Resources (DNR) <http://open.canada.ca/en/open-government-licence-canada>", "Alberta Geological Survey (AGS), Canada", "Ministry of Natural Resources and Forestry, Land Information Ontario (LIO), Canada, information licensed under the Open Government License", "© Gouvernement du Québec, Canada", "Groupe Synergis, Canada", "Track Map Data", "Cataraqi Region Conservation Authority (CRCA), Canada", "Government of Canada, Fisheries and Oceans Canada", "Aire Faunique Communautaire (AFC) du Réservoir Gouin, Canada", Tennessee Valley Authority (TVA); Maryland Department of Natural Resources; Louisiana Department of Wildlife and Fisheries, Dirección General Adjunta de Oceanografía Hidrografía y Meteorología de México, Dirección General de Investigación y Desarrollo (DIGINDES) © 2018. All rights reserved; © Province of British Columbia All rights reserved.

This product has been derived in part from material obtained from the UK Hydrographic Office with the permission of the UK Hydrographic Office, Her Majesty's Stationery Office and the following authorities: © British Crown Copyright (2001-2018). All rights reserved. Notice: The UK Hydrographic Office (UKHO) and its licensors make no warranties or representations, express or implied, with respect to this product. The UKHO and its licensors have not verified the information within this product or quality assured it."

DISCLAIMER:

This product has been created by Garmin Ltd. And its subsidiaries, using data owned by and provided under license from the Province of British Columbia. Reproduction of this product or any such data by any means is prohibited also "DO NOT USE THESE MAPS FOR NAVIGATIONAL PURPOSES. These maps may not reflect current conditions. Uncharted hazards may exist"

DISCLAIMER:

This data was produced by the Lower Colorado River Authority (LCRA) for its own use. Accordingly, certain information, features, or details may have been emphasized over others, or may have been left out. The LCRA does not warrant the accuracy of this data, either as to scale, accuracy or completeness. IN ADDITION, THE LCRA EXPRESSLY DISCLAIMS ANY AND ALL WARRANTIES, EXPRESSED OR IMPLIED, INCLUDING THE WARRANTIES OF MERCHANTABILITY AND FITNESS FOR PURPOSE. If this data is reproduced or displayed on a map, the reproducer shall insure that this disclaimer accompanies the map, and in the event the reproducer fails to include a copy of this disclaimer with the map or data, the reproducer hereby agrees to indemnify, defend, and hold harmless the LCRA and its directors, officers, and employees from and against any and all claims, demands, suits, or judgments, directly or indirectly arising out of reproducer's dissemination of the map or data to others.

"This reproduction, partial or complete, of any National Geospatial-Intelligence Agency (NGA), National Imagery and Mapping Agency (NIMA) or Defense Mapping Agency (DMA) product, information or data is not approved, authorized or endorsed by the Secretary of Defense, the Director of National Intelligence, the Director, NGA or any other element of the US Government. The US Government and NGA accept no liability for the accuracy or quality of this reproduction or the use of any NGA, NIMA or DMA products, information or data."

"This product has been produced by Navionics based on "Canadian Hydrographic Service (CHS)" data, following any minimum standards/guidelines that may have been established by CHS, pursuant to CHS Digital Value-Added Reseller Agreement No.2017-1114-1260-N. The incorporation of data sourced from CHS in this product shall not be construed as constituting an endorsement by CHS of this product. This product does not meet the requirements of the Charts and Nautical Publications Regulations,1995 under the Canada Shipping Act, 2001. Charts and publications issued by or on the authority of CHS must be used to meet the requirements of those regulations."

"Contains information published by the Canadian Coast Guard and Department of Fisheries and Oceans licensed under the Canadian Coast Guard Open Information License. This Information is available in its original format for free download on the Canadian Coast Guard website and the Monthly Edition of the Notices to Mariners (NOTMAR) website"

WARNING:

No national hydrographic office (HO), State Authority, and their licensors have verified the information in this product or quality assured it, and none accept liability for the accuracy of reproduction or any modifications made thereafter. No national hydrographic office and their licensors make any warranties or representations, express or implied, with respect to this product. No national hydrographic office warrants that the product satisfies national or international regulations regarding the use of the appropriate products for navigation or that it contains the latest hydrographic information available.

WARNING:

All charts are digitized directly from existing government and other official charts and should not be used solely for navigation. Digital charts are intended to be used as an aid to traditional navigational charts, not as a replacement. Only official government charts and notices to mariners and notices to shipping/NAVAREA broadcasts and written alerts contain all information needed for the safety of navigation, and as always, the captain is responsible for their prudent use. A prudent navigator never relies on any single source of navigational information. Garmin strives to provide its customers with the most economical, accurate and up-to-date chart data. However, features are continually changing, so the data may not reflect the latest modifications and/or additions in your area. Garmin makes no warranty as to the accuracy or completeness of the data.

WARNING:

Some of the information in this product may have been produced, in part or whole, from withdrawn national hydrographic office products. New charts and/or NTM corrections will render this product obsolete and inaccurate.

WARNING:

U.S. National Park Service / Department of the Interior (NPS) property ownership data is compiled from deeds, plats, surveys, and other source data. These are not engineering quality drawings and should be used for administrative purposes only. The National Park Service shall not be held liable for improper or incorrect use of the data described and/or contained herein. These data and related graphics are not legal documents and are not intended to be used as such. The information contained in these data is dynamic and may change over time. The data are not better than the original sources from which they were derived. It is the responsibility of the data user to use the data appropriately and consistent within the limitations of geospatial data in general and these data in particular. The related graphics are intended to aid the data user in acquiring relevant data; it is not appropriate to use the related graphics as data. The National Park Service gives no warranty, expressed or implied, as to the accuracy, reliability, or completeness of these data. It is strongly recommended that these data are directly acquired from an NPS server and not indirectly through other sources which may have changed the data in some way. Although these data have been processed successfully on a computer system at the National Park Service, no warranty expressed or implied is made regarding the utility of the data on another system or for general or scientific purposes, nor shall the act of distribution constitute any such warranty. This disclaimer applies both to individual use of the data and aggregate use with other data. The data is intended for use as a tool for display and general GIS analysis purposes only. It is in no way intended for engineering or legal purposes. The data accuracy is checked against best available sources which may be dated. NPS assumes no liability for use of this data.

CAUTION:

The bathymetric reactions contained in this product have been carried out with the standards in force at the time of their publication. No verification and / or validation by the Government of Quebec. Assumes no responsibility for the accuracy of the bathymetric data or data included in this product cannot be responsible for the conclusions obtained or damage suffered as a result of the use of this product. Bathymetric data from Quebec provide general representations and structures under the surface of the water. The bathymetric data of Quebec are not suitable for use to surface navigation. It may expect non-mapped obstacles.

DISCLAIMER:

This information is intended as a general guide to artificial reef sites off the Georgia coast and is not intended for use as a navigational guide for offshore and coastal waters. The Hawaii Artificial Reef data is provided "AS IS" and without warranties of any kind. The information may change without prior notice and may not be the latest update. Users of this data are therefore fully responsible for checking the accuracy, completeness, currency and suitability of content found in this data themselves. TPWD provides the Artificial Reefs Interactive Mapping Application as a public service in support of TPWD's mission to manage and conserve the natural and cultural resources of Texas and to provide hunting, fishing and outdoor recreation opportunities for the use and enjoyment of present and future generations. TPWD makes no representation or warranty, express or implied, regarding the accuracy, completeness, currency, or suitability of any information provided herein for any purpose. In consideration for using the Artificial Reefs Interactive Mapping Application all persons thereby release and hold harmless TPWD from and against any and all claims and/or damages that may result from use of the information contained or posted therein.

Canadian shoreline information in this product is reproduced, in whole or part, courtesy of CanVec+ Government of Canada; © Department of Natural Resources Canada; Earth Sciences Sector; Canada Centre for Mapping and Earth Observation. All rights reserved. <http://www.geogratis.gc.ca/geogratis/en/index.html>.

LakeVü™ HD Ultra Lakes DEM data © 2012-2018 Intermap Technologies Inc. All rights reserved. Intermap, the Intermap logo, and NEXTmap is a registered trademark of Intermap Technologies, Inc. in the U.S. and other countries.

All above Companies, Institutions and Hydrographic Offices have not verified the product and do not accept liability for its accuracy.

OTHER PARTNERS

"Transform and Lighting, www.trasformandlighting.com",

Copyright © 2018 Navionics

NOTICE:

Federal and State laws provide for the protection of certain archaeological and other cultural resources, including objects and sites that might be found in lakes and other bodies of water. It is your responsibility to know about and comply with these laws at all times.

NOTICE:

This product may be programmed on a recycled data card.



