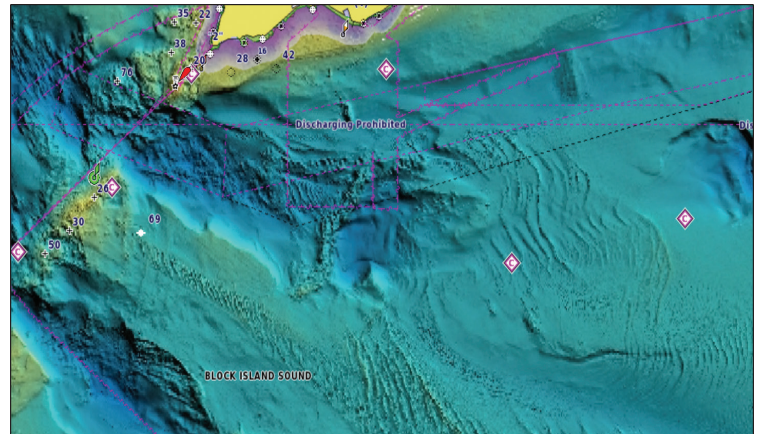
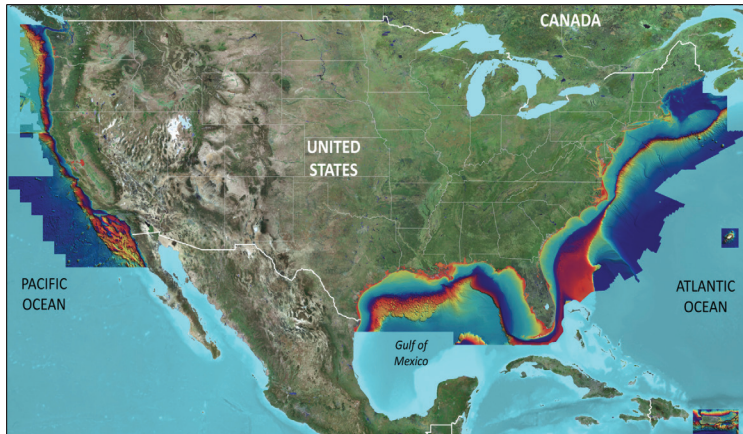


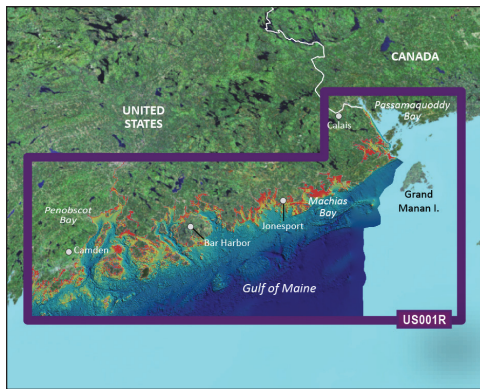
GARMIN

HIGH-RESOLUTION RELIEF SHADING COVERAGE FOR BLUECHART® G3 VISION

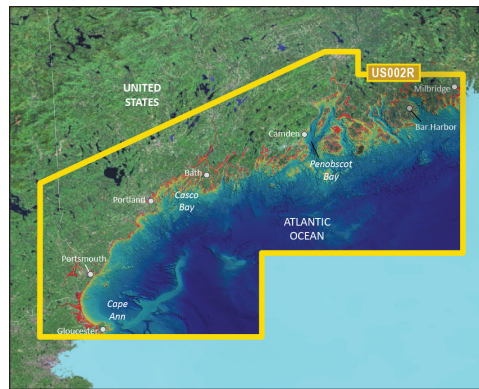
Now with extended coverage and enhanced detail, this feature is included in each of these premium BlueChart g3 Vision accessory cards.



REGULAR COVERAGE AREAS



**NORTH MAINE
US001R**



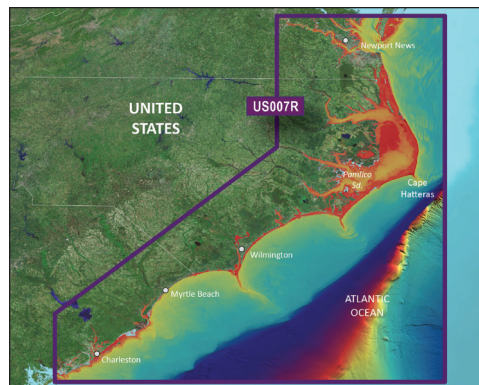
**SOUTH MAINE
US002R**



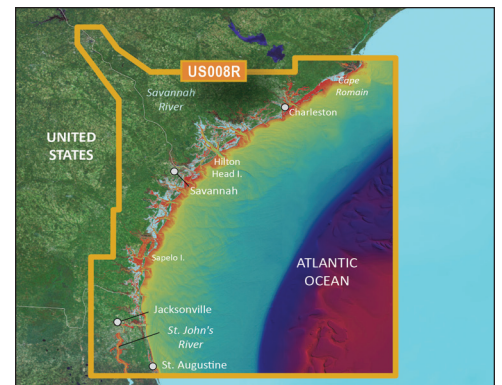
**CAPE COD
US003R**



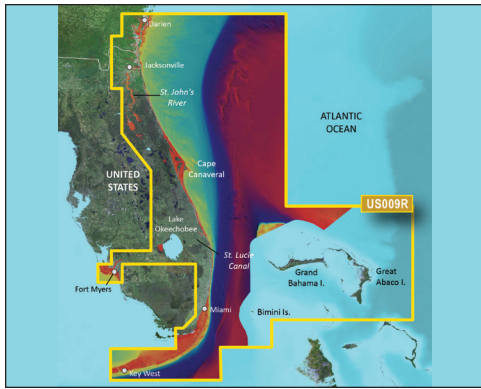
**NEW YORK
US004R**



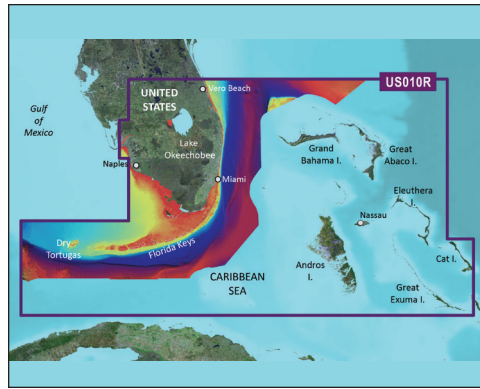
**NORFOLK TO CHARLESTON
US007R**



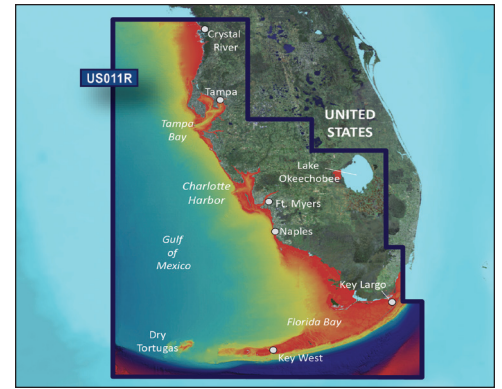
**CHARLESTON TO JACKSONVILLE
US008R**



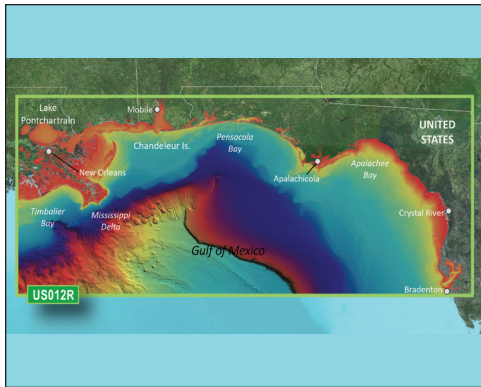
JACKSONVILLE TO KEY WEST
US009R



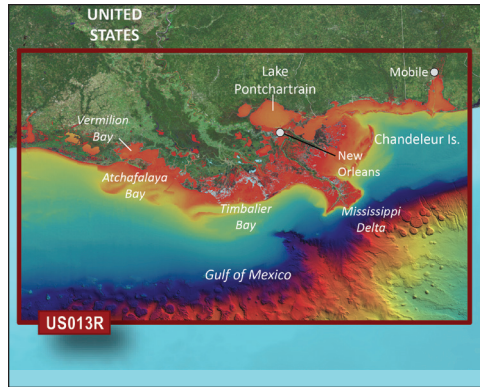
SOUTHEAST FLORIDA AND BAHAMAS
US010R



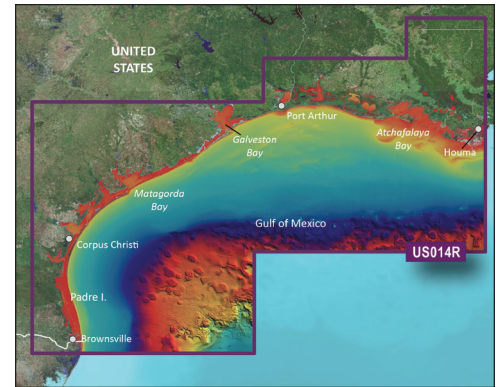
SOUTHWEST FLORIDA
US011R



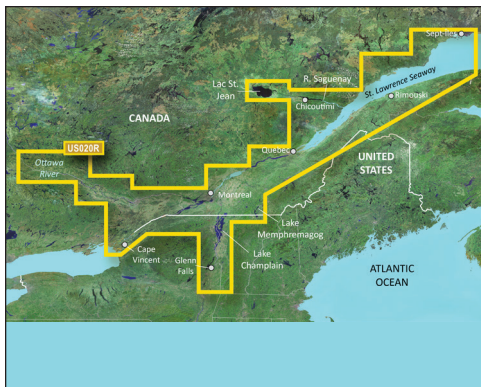
TAMPA TO NEW ORLEANS
US012R



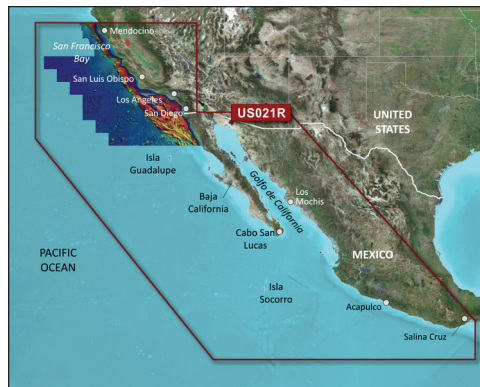
MOBILE TO LAKE CHARLES
US013R



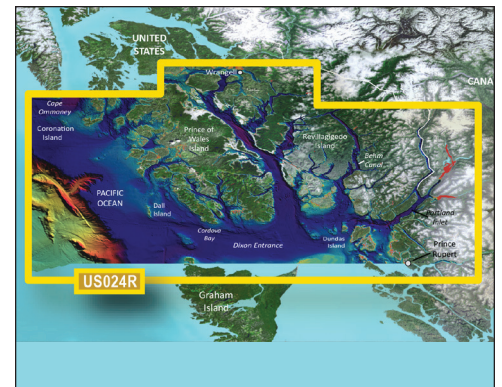
MORGAN CITY TO BROWNSVILLE
US014R



ST. LAWRENCE SEAWAY
US020R



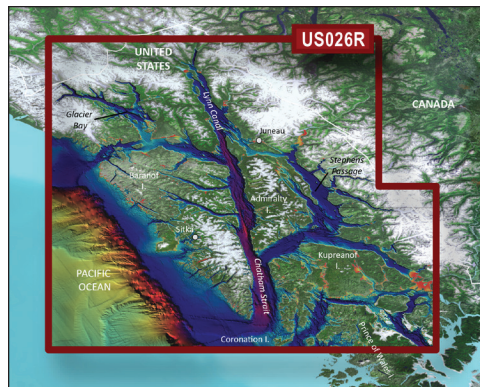
CALIFORNIA - MEXICO
US021R



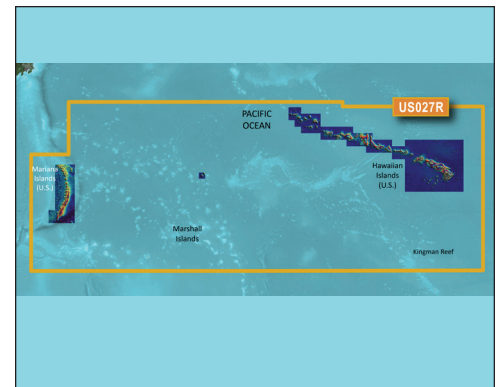
WRANGELL - DIXON ENTRANCE
US024R



ANCHORAGE - JUNEAU
US025R



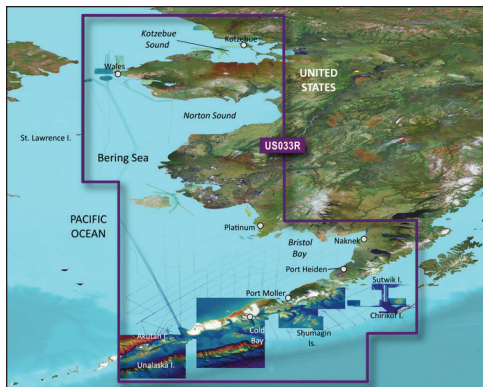
WRANGELL - JUNEAU - SITKA
US026R



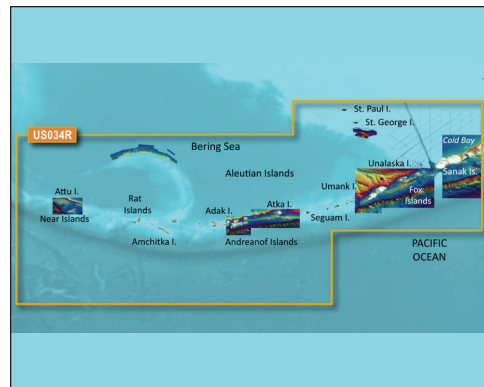
HAWAIIAN ISLANDS - MARIANA ISLANDS
US027R



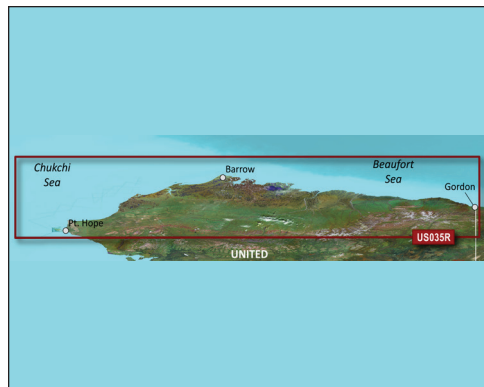
SOUTHEAST CARIBBEAN
US030R



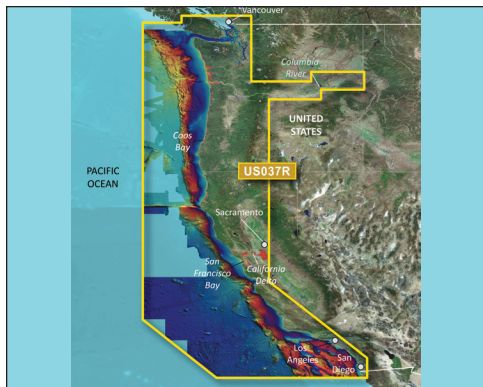
BRISTOL BAY - KOTZEBUE SOUND
US033R



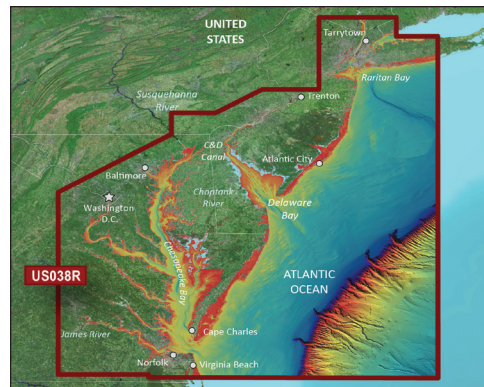
ALEUTIAN ISLANDS
US034R



NORTH SLOPE ALASKA
US035R



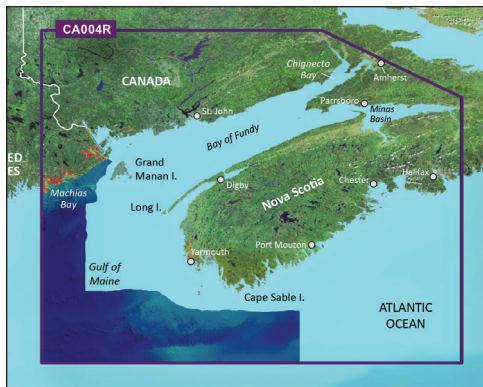
VANCOUVER TO SAN DIEGO
US037R



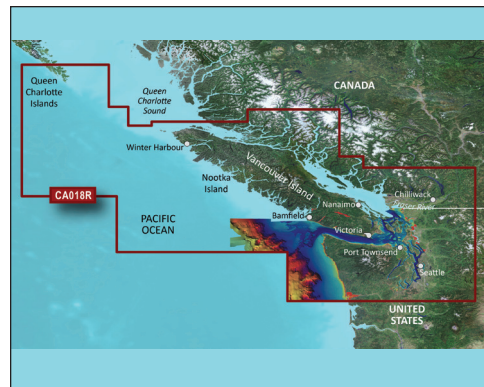
NEW YORK TO CHESAPEAKE
US038R



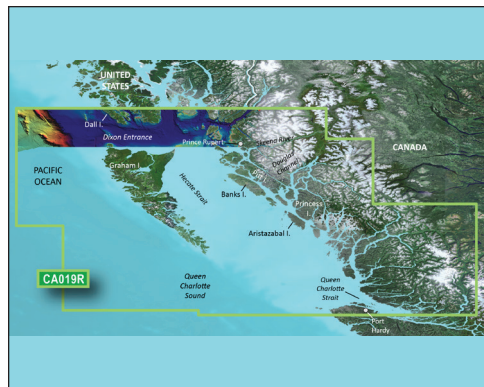
BERMUDA
US048R



BAY OF FUNDY
CA004R

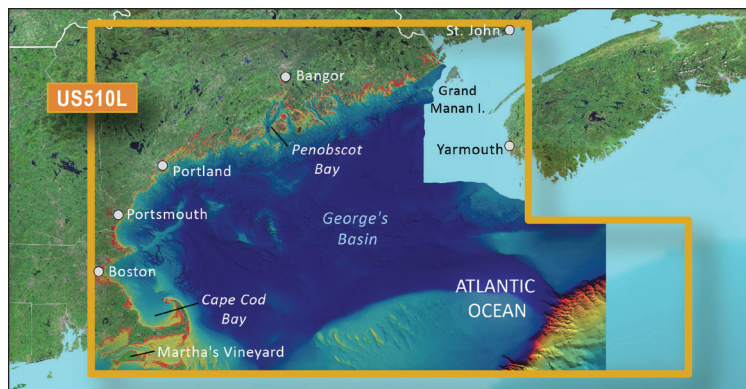


INSIDE TO OUTSIDE PASSAGE
CA018R

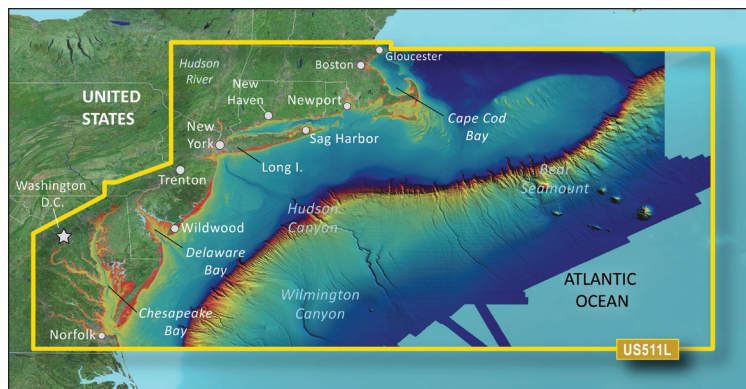


HECATE STRAIT
CA019R

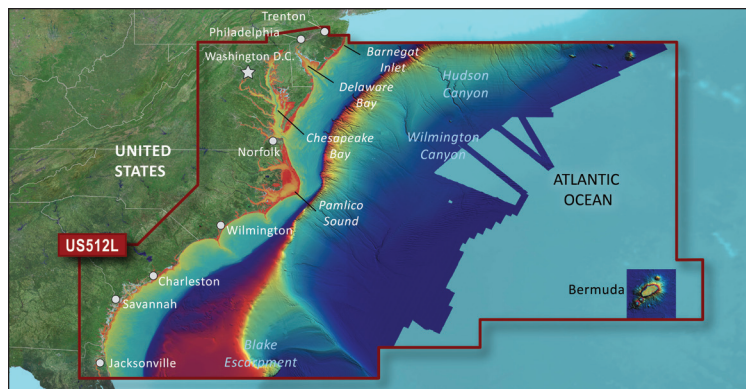
LARGE COVERAGE AREAS



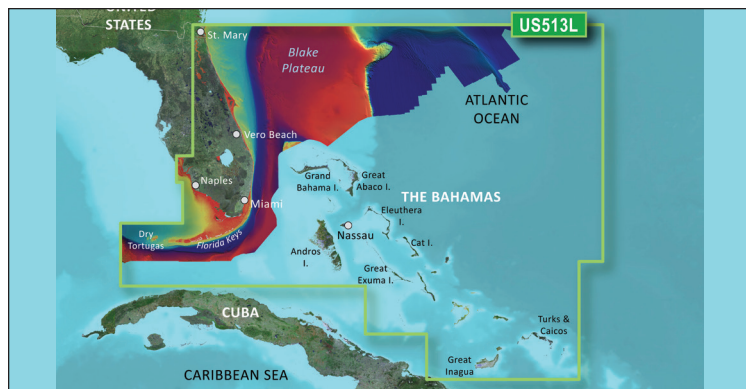
ST. JOHN TO CAPE COD
US510L



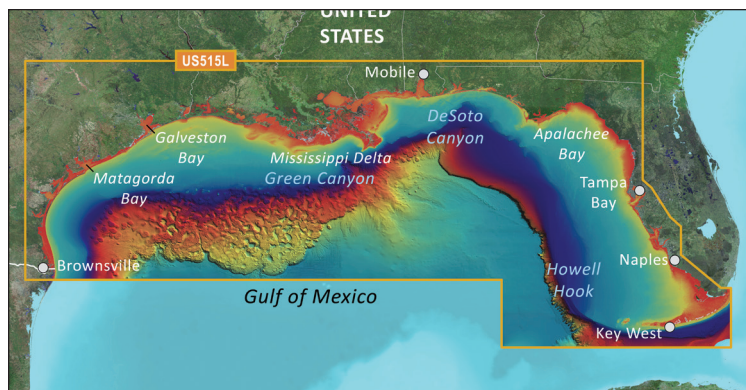
BOSTON TO NORFOLK
US511L



MID-ATLANTIC
US512L



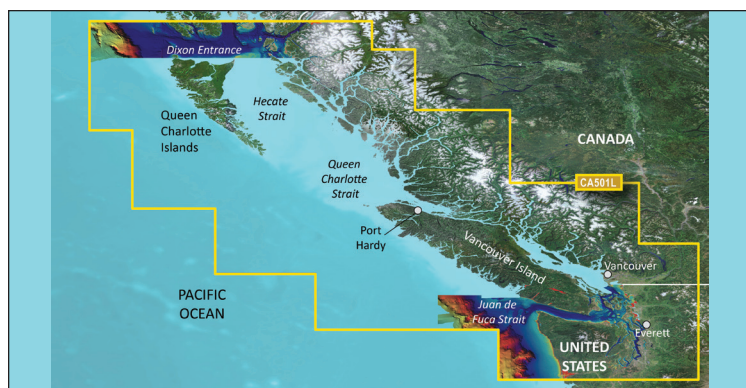
JACKSONVILLE TO BAHAMAS
US513L



BROWNSVILLE TO KEY LARGO
US515L



ALASKA SOUTH
US517L



PUGET SOUND TO DIXON ENTRANCE
CA501L

NOTE: The colored areas outlined in each coverage image depict the approximate coverage areas of the high-resolution relief shading data included in each BlueChart g3 Vision accessory card.

M01-00485-00 0820