



Varia™ Bike Lights



Owner's Manual

© 2015 Garmin Ltd. or its subsidiaries

All rights reserved. Under the copyright laws, this manual may not be copied, in whole or in part, without the written consent of Garmin. Garmin reserves the right to change or improve its products and to make changes in the content of this manual without obligation to notify any person or organization of such changes or improvements. Go to www.garmin.com for current updates and supplemental information concerning the use of this product.

Garmin®, the Garmin logo, ANT+®, and Edge® are trademarks of Garmin Ltd. or its subsidiaries, registered in the USA and other countries. Garmin Connect™, Garmin Express™, and Varia™ are trademarks of Garmin Ltd. or its subsidiaries. These trademarks may not be used without the express permission of Garmin.

This product is ANT+® certified. Visit www.thisisant.com/directory for a list of compatible products and apps.

M/N: A02666, A02669

Table of Contents

Introduction	1
Getting Started	1
Charging the Device	1
Installing the Out-Front Mount	1
Tips for Installing the Taillight	1
Installing the Seat-Post Mount	1
Installing the Multi-Location Mount	2
Varia HL Device Overview	2
Varia TL Device Overview	2
Turning On the Device	2
Operating Modes	2
Bike Light Status LEDs	2
Device Settings	3
Pairing Varia Bike Lights with Your Edge 1000	3
Customizing Varia Device Settings with Your Edge 1000	3
Light Mode Settings	3
Adjusting the Beam Angle During a Ride	3
Turn Signal Settings	3
Light Network Settings	4
Testing the Light Network	4
Wireless Remote Control	4
Device Overview	4
Status LED	4
Pairing the Remote with Your Varia Device	4
Using the Mounts	4
Replacing the Battery	4
Device Information	5
Specifications	5
Headlight Specifications	5
Taillight Specifications	5
Remote Specifications	5
Device Care	6
Cleaning the Device	6
Troubleshooting	6
Resetting the Device	6
Thermal Safety Shutdown	6
Replacement O-rings	6
Support and Updates	6
Updating the Software	6
Getting More Information	6
Appendix	6
Software License Agreement	6
Index	7

Introduction

⚠ WARNING

See the *Important Safety and Product Information* guide in the product box for product warnings and other important information.

Always consult your physician before you begin or modify any exercise program.

Getting Started

You can use the Varia HL (headlight) and Varia TL (taillight) alone, with the optional wireless remote, or with your compatible Edge® device. This list provides an overview of the installation and setup tasks.

- Charge the device ([Charging the Device](#), page 1).
 - Install the headlight using the out-front mount ([Installing the Out-Front Mount](#), page 1).
 - Install the taillight using one of the included mounts:
 - Install the seat-post mount ([Installing the Seat-Post Mount](#), page 1).
 - Install the multi-location mount ([Installing the Multi-Location Mount](#), page 2).
- TIP:** If you are using two taillights as turn signals, you can install two multi-location mounts on the seat stays of your bike.
- NOTE:** The turn signal feature is available on the Varia TL 300 only.
- If you are using the wireless remote, pair the devices ([Pairing the Remote with Your Varia Device](#), page 4).
 - If you are using the wireless remote, install it on your bike stem or handlebar ([Using the Mounts](#), page 4).
 - If you are using a compatible Edge device, pair the devices ([Pairing Varia Bike Lights with Your Edge 1000](#), page 3).
 - If you are using a compatible Edge device, customize the bike light settings ([Customizing Varia Device Settings with Your Edge 1000](#), page 3).

Charging the Device

NOTICE

To prevent corrosion, thoroughly dry the USB port, the weather cap, and the surrounding area before charging or connecting to a computer.

The device is powered by a built-in lithium-ion battery that you can charge using a standard wall outlet or a USB port on your computer.

NOTE: The device does not charge when outside the approved temperature range ([Specifications](#), page 5).

- 1 Pull up the weather cap from the USB port.
- 2 Plug the small end of the USB cable into the USB port on the device.
- 3 Plug the large end of the USB cable into an AC adapter or a computer USB port.
- 4 Plug the AC adapter into a standard wall outlet.
- 5 Charge the device completely.

The status LED flashes green while charging. The status LED is solid green when charging is complete.

Installing the Out-Front Mount

You can use the out-front mount to install both an Edge device and a headlight.

- 1 Select a secure location to mount the Edge device and headlight where they do not interfere with the safe operation of your bike.

- 2 Use the hex key to remove the screw ① from the handlebar connector ②.



- 3 If necessary, remove the two screws on the top of the mount ③, rotate the connector, and replace the screws to change the orientation of the mount for an Edge device.
- 4 Place a rubber pad around the handlebar:
 - If the handlebar diameter is 25.4 mm, use the thicker pad.
 - If the handlebar diameter is 31.8 mm, use the thinner pad.
- 5 Place the handlebar connector around the rubber pad.

NOTE: You should align the contours on the rubber pad with the grooves on the inside of the handlebar connector.
- 6 Adjust the mount on the handlebar so the headlight is mounted horizontally, parallel to the road.
- 7 Replace and tighten the screw.

NOTE: Garmin® recommends a torque specification of 7 lbf-in. (0.8 N-m). You should check the tightness of the screw periodically.
- 8 Align the notches on the top of the headlight with the tabs on the bottom of the mount.
- 9 Press up slightly and turn the headlight clockwise until it locks into place.
- 10 If installing an Edge device, align the tabs on the back of the Edge device with the notches on the top of the mount.
- 11 Press down slightly and turn the Edge device clockwise until it locks into place.



Tips for Installing the Taillight

- Select a secure location to mount the taillight where it does not interfere with the safe operation of your bike.
 - Select a mount that best fits your bike.
 - Mount the device as high on the seat post as possible for optimal light visibility. Verify there is clear space (no obstructions) behind the device.
 - If you are using two taillights as turn signals, mount the devices at the same height and as far apart as possible on the seat stays of your bike.
- NOTE:** The turn signal feature is available on the Varia TL 300 only.

Installing the Seat-Post Mount

- 1 Use the hex key to remove the screw ① from the seat-post connector ②.



- 2 Place a rubber pad around the seat post, if necessary:
 - If the seat post diameter is from 27 to 28.6 mm, use the thicker pad.
 - If the seat post diameter is from 30.4 to 31 mm, use the thinner pad.
 - If the seat post diameter is from 31 to 31.8 mm, do not use a rubber pad.
- 3 Place the seat-post connector around the rubber pad.

NOTE: You should align the contours on the rubber pad with the grooves on the inside of the seat-post connector.
- 4 Replace and tighten the screw.

NOTE: Tighten the seat-post clamp until the mount does not slide on the seat post, or to a maximum torque specification of 3 lbf-in. (0.3 N-m). You should check the tightness of the screw periodically.
- 5 Align the tabs on the back of the device with the seat-post mount notches (3).

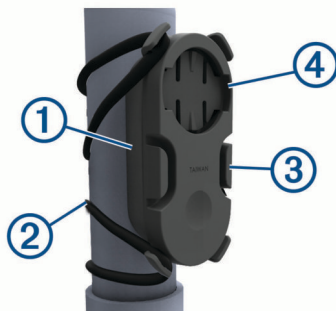


- 6 Press down slightly and turn the device clockwise until it locks into place.

Installing the Multi-Location Mount

You can use the multi-location mount to install the device on your seat post, helmet, backpack, or other location. Garmin recommends that you enable the deceleration indicator only when mounting the device vertically on your seat post.

- 1 If necessary, select the correct rubber pad (1) for your seat post shape.



- 2 Place the mount on the seat post or other mounting location.
- 3 Attach the mount securely using one or two bands (2).

NOTE: You can use the hooks on the center of the mount (3) when using only one band.
- 4 Align the tabs on the back of the device with the mount notches (4).
- 5 Press down slightly and turn the device clockwise until it locks into place.

Varia HL Device Overview



① Device key	Hold to turn the device on and off. Select to change operating modes.
② Status LED	View device status (Bike Light Status LEDs, page 2).

Varia TL Device Overview



① Device key	Hold to turn the device on and off. Select to change operating modes.
② Status LED (visible above the device key)	View device status (Bike Light Status LEDs, page 2).

Turning On the Device

- 1 Hold the device key for 1 second.

The first time you turn on the device, it enters smart mode. The status LED flashes blue. The device can be controlled by a paired wireless remote or Edge device.
- 2 Hold the device key for 2 seconds to turn off the device.

The next time you turn on the device, it enters the last-used operating mode.

Operating Modes

Varia HL 500	Smart mode (pairing) Overdrive, high, medium, low, and flash
Varia HL 501	Smart mode (pairing) High, medium, and low
Varia TL 300	Smart mode (pairing) High, medium, low, and flash
Varia TL 301	Smart mode (pairing) High and low

Bike Light Status LEDs

LED Activity	Status
Solid red	An error occurred while charging. The device shut down to prevent overheating.
Alternating blue and green	The device is uploading settings from Garmin Express™.
Alternating blue and red	An error occurred while uploading settings from Garmin Express.
Flashing green	The battery is charging.
Solid green	Charging is complete.

LED Activity	Status
Flashing red	The battery is low.
Flashing blue	The device is in smart mode and can be controlled by a paired wireless remote or Edge device.

Device Settings

You can remotely control your Varia devices and customize settings using your compatible Edge device. This section contains instructions for the Edge 1000 device. Other compatible Edge devices use similar settings.

Pairing Varia Bike Lights with Your Edge 1000

Before you can pair the devices, you must update the Edge software.

- 1 Bring the Edge device within range (3 m) of the sensor.
NOTE: Stay 10 m away from other ANT+® bike lights while pairing.
- 2 Turn on the Edge device.
- 3 From the home screen, select **✖ > Sensors > Add Sensor > Search All**.
- 4 Turn on the Varia device.
- 5 Select the Varia device key to enter smart mode.
The status LED flashes blue.
- 6 Select your sensor.

When the sensor is paired with your Edge device, the status icon appears solid on the connections page.

Customizing Varia Device Settings with Your Edge 1000

Before you can customize Varia device settings with your Edge device, you must pair the devices (*Pairing Varia Bike Lights with Your Edge 1000*, page 3).

- 1 From your Edge device, select **✖ > Sensors > Lights**.
- 2 Select an option:
 - Select **Enable** to enable the light network.
 - Select **Network Options > Light Mode** to set the light intensity mode for all lights in your network (*Light Mode Settings*, page 3).
 - Select **Network Options > Test Lights** to check that each light in your network is set up correctly (*Testing the Light Network*, page 4).
 - Select **Network Options > Beam Angle** to adjust the headlight beam angle automatically based on the rate of speed. Higher beam angles are used at high speeds, and lower beam angles are used at low speeds.
NOTE: This setting appears when a headlight is paired with the device.
 - Select **Network Options > Turn Signal Setup** to configure turn signals when using two taillights (*Turn Signal Settings*, page 3).
NOTE: This setting appears when two taillights are paired with the device. The turn signal feature is available on the Varia TL 300 only.
 - Select a light to view device information and customize each light in your network (*Light Network Settings*, page 4).

Light Mode Settings

From your Edge device, select **✖ > Sensors > Lights > Network Options > Light Mode**.

Auto: Automatically adjusts the light intensity based on the ambient light or time of day.

High Visibility: For Varia HL 500 and Varia TL 300, sets the light intensity to flash mode.

For Varia HL 501 and Varia TL 301, sets the light intensity to the brightest setting available.

Individual: Allows you to customize the light intensity and pattern mode for each light in your network (*Light Network Settings*, page 4).

Adjusting the Beam Angle During a Ride

Before you can adjust the beam angle during a ride, you must disable the automatic beam angle setting (*Customizing Varia Device Settings with Your Edge 1000*, page 3).

- 1 Go for a ride.
- 2 Swipe the screen to view the bike lights data screen.
- 3 Select **+** or **-** to adjust the headlight beam angle.

Turn Signal Settings

From your Edge device, select **✖ > Sensors > Lights > Network Options > Turn Signal Setup**.

NOTE: The turn signal feature is available on the Varia TL 300 only.

Enable: Allows the paired Edge device to assign and control turn signals.

Auto Cancel: Automatically cancels the turn signal after making a 90-degree turn.

NOTE: Your paired Edge device must have GPS turned on in order to use the Auto Cancel setting.

Right: Assigns the right turn signal.

Left: Assigns the left turn signal.

Assigning Turn Signals

When using two taillights, you must indicate which light is the left turn signal and which light is the right turn signal.

- 1 Pair two taillights with your Edge device (*Pairing Varia Bike Lights with Your Edge 1000*, page 3).
- 2 From your Edge device, select **✖ > Sensors > Lights > Network Options > Turn Signal Setup**.
- 3 Select **Right**, and select a taillight to assign it as the right turn signal.
When two taillights are paired, the Edge device assigns the second taillight as the left turn signal automatically.
- 4 If necessary, select **Left**, and select the second taillight to assign it as the left turn signal.

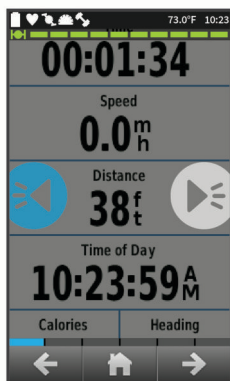
Signaling a Turn with Your Edge 1000

WARNING

The Varia device is not a substitute for other bike safety measures, such as hand signals, deferring to posted signs and conditions, and using good judgement.

Before you can signal a turn with your Edge device, you must install two taillights (*Installing the Multi-Location Mount*, page 2) and assign turn signals to them (*Assigning Turn Signals*, page 3).

- 1 Go for a ride.
- 2 Tap the screen to view the timer overlay.



- 3 Select the left or right turn signal.

NOTE: You can select the same turn signal again to cancel the turn signal.

Light Network Settings

From your Edge device, select > **Sensors** > **Lights**, and select a paired light.

Enable: Turns on the light and allows you to control the light remotely with your Edge device. You can disable a light to disconnect it from the light network.

Motion Activated: Automatically turns on the light when the Edge device is in motion.

Auto Deceleration: Automatically adjusts the taillight intensity and pattern when decelerating sharply.

NOTE: This setting appears when a taillight is paired with the device.

NOTE: Taillight medium and flash modes are available on the Varia TL 300 device only.

Light Mode: Sets the light intensity and pattern mode, or turns off the light.

NOTE: This setting is available when the Individual light mode setting is selected (*Light Mode Settings, page 3*).

About: Displays device, software, and battery information.

Remove: Allows you to delete a paired light from the network.

Checking the Battery Level

From your Edge device, select > **Sensors** > **Lights**.

The battery level for all paired lights appears.

Testing the Light Network

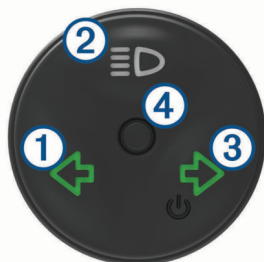
- 1 From your Edge device, select > **Sensors** > **Lights** > **Network Options** > **Test Lights**.

- 2 Select a light to test.

The light blinks when it is connected.

Wireless Remote Control

Device Overview



①	Taillight key. Select to signal a left turn when using two taillights. NOTE: The turn signal feature is available on the Varia TL 300 only. Hold to change the taillight operating modes.
②	Headlight key. Select to switch between low beam and high beam. Hold to change the headlight operating modes.
③	Taillight key and power key. Select to signal a right turn when using two taillights. Hold to turn all lights on and off.
④	Status LED.

Status LED

LED Activity	Status
Flashing green	Searching for a paired device.
Alternating red and green	Attempting to pair with a device. A turn indicator is on.
12 rapid green flashes	Successfully paired with a device.
Solid red	Pairing failed or the connection was lost.
Flashing red	One or more of the paired devices has a low battery.

Pairing the Remote with Your Varia Device

The first time you connect the Varia remote to your Varia device, you must pair the remote with your device.

- 1 Bring the remote within 1 m (3 ft.) of the device.

NOTE: You must stay 10 m (33 ft.) away from other ANT+ sensors while pairing.

- 2 On the Varia device, hold the device key for 1 second to turn it on.

- 3 Select the Varia device key to enter smart mode.

The status LED starts flashing blue.

- 4 On the Varia remote, hold two keys simultaneously until the status LED starts alternating green and red, and release the keys.

The remote searches for your Varia device. After the remote pairs successfully, the status LED flashes green 12 times.

After the remote is paired, it connects to your device whenever the device is in range and turned on in smart mode. You may need to wake the remote by selecting any key.

Using the Mounts

Several mounts are available for your remote, either included with the product or as an optional accessory. The mounts allow you to attach the remote to your body, your bike, or other objects.

- Align two of the notches ① with the sides of the mount, and press the remote into the mount until it clicks.



- Press gently on the release tab ②, and lift the remote from the mount.

Replacing the Battery

⚠ WARNING

Do not use a sharp object to remove batteries.

Keep the battery away from children.

Never put batteries in mouth. If swallowed, contact your physician or local poison control center.

Replaceable coin cell batteries may contain perchlorate material. Special handling may apply. See www.dtsc.ca.gov/hazardouswaste/perchlorate.

⚠ CAUTION

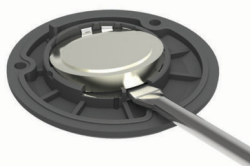
Contact your local waste disposal department to properly recycle the batteries.

Before you can replace the battery, you must have a small Phillips screwdriver, a small flat screwdriver, and a CR2032 lithium coin-cell battery.

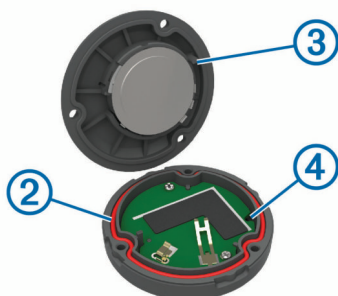
- 1 Using a Phillips screwdriver, remove the three screws from the back plate ①.



- 2 Remove the back plate from the remote.
- 3 Wrap the end of a small flat screwdriver with tape. The tape protects the battery, battery compartment, and contacts from damage.
- 4 Carefully pry the battery from the back plate.



- 5 Install the new battery into the back plate with the positive side facing down.
- 6 Verify the gasket ② is fully seated in the groove.



- 7 Replace the backplate, aligning the post ③ with the gap in the circuit board ④.
- 8 Replace and tighten the three screws.

NOTE: Do not overtighten.

Device Information

Specifications

Headlight Specifications

Battery type	Rechargeable, built-in lithium-ion battery
Battery life	Up to 2.5 hr. in high mode Up to 5 hr. in flash mode Flash mode is available on the Varia HL 500 only

Operating temperature range	From -15° to 50°C (from 5° to 122°F)
Charging temperature range	From 0° to 40°C (from 32° to 104°F)
Radio frequency/protocol	2.4 GHz ANT+ wireless communications protocol
Water rating	IEC 60529 IPX7 ¹
Varia HL 500 LED luminous flux and peak illuminance	600 lm 95 lx
Varia HL 501 LED luminous flux and peak illuminance	300 lm 65 lx

Headlight Light Intensity Modes

Intensity Mode	Varia HL 500 Illuminance and Luminous Flux	Varia HL 501 Illuminance and Luminous Flux
Overdrive	600 lm 95 lx	Not applicable
High	400 lm 70 lx	300 lm 65 lx
Medium	250 lm 50 lx	200 lm 50 lx
Low	150 lm 30 lx	150 lm 35 lx
Flashing	600 lm 95 lx	Not applicable

Taillight Specifications

Battery type	Rechargeable, built-in lithium-ion battery
Battery life	Up to 4 hr. in high mode Up to 14 hr. in flash mode Flash mode is available on the Varia TL 300 only
Operating temperature range	From -15° to 50°C (from 5° to 122°F)
Charging temperature range	From 0° to 40°C (from 32° to 104°F)
Radio frequency/protocol	2.4 GHz ANT+ wireless communications protocol
Water rating	IEC 60529 IPX7 ¹
Varia TL 300, 301 LED luminous flux	22 lm (typical in high mode)

Taillight Light Intensity Modes

Intensity Mode	Varia TL 300 Luminous Flux	Varia TL 301 Luminous Flux
High	22 lm	22 lm
Medium	14 lm	Not applicable
Low	7 lm	14 lm
Flashing	28 lm	Not applicable
Braking	35 lm	35 lm

Remote Specifications

Battery type	User-replaceable CR2032, 3 V
Battery life	Up to 1.5 yr. at 1 hr./day
Operating temperature range	From -10° to 50°C (from 14° to 122°F)
Radio frequency/protocol	2.4 GHz ANT+ wireless communications protocol
Water rating	5 ATM ²

¹ The device withstands incidental exposure to water of up to 1 m for up to 30 min. For more information, go to www.garmin.com/waterrating.

² The device withstands pressure equivalent to a depth of 50 m. For more information, go to www.garmin.com/waterrating.

NOTICE

Do not store the device where prolonged exposure to extreme temperatures can occur, because it can cause permanent damage.

Avoid chemical cleaners, solvents, and insect repellents that can damage plastic components and finishes.

Secure the weather cap tightly to prevent damage to the USB port.

Cleaning the Device

- 1 Wipe the device using a cloth dampened with a mild detergent solution.
- 2 Wipe it dry.

Troubleshooting

Resetting the Device

You can reset the device if it stops responding.

Hold the device key for 8 seconds until all LEDs turn off.

Thermal Safety Shutdown

To prevent overheating, the Varia device may turn off when operated at a high intensity in warm, stagnant air. The status LED is red until the device cools down. You should use the device outdoors.

Replacement O-rings

Replacement bands (O-rings) are available for the mounts.

NOTE: Use Ethylene Propylene Diene Monomer (EPDM) replacement bands only. Go to <http://buy.garmin.com>, or contact your Garmin dealer.

Support and Updates

Garmin Express (www.garmin.com/express) provides easy access to these services for Garmin devices.

- Product registration
- Product manuals
- Software updates

Updating the Software

Before you can update your device software, you must have a Garmin Connect™ account, and you must download the Garmin Express application.

- 1 Connect the device to your computer using the USB cable.
When new software is available, Garmin Express sends it to your device.
- 2 Follow the on-screen instructions.
- 3 Do not disconnect your device from the computer during the update process.

Getting More Information

- Go to www.garmin.com/intosports.
- Go to www.garmin.com/learningcenter.
- Go to <http://buy.garmin.com>, or contact your Garmin dealer for information about optional accessories and replacement parts.

Software License Agreement

BY USING THE DEVICE, YOU AGREE TO BE BOUND BY THE TERMS AND CONDITIONS OF THE FOLLOWING SOFTWARE LICENSE AGREEMENT. PLEASE READ THIS AGREEMENT CAREFULLY.

Garmin Ltd. and its subsidiaries ("Garmin") grant you a limited license to use the software embedded in this device (the "Software") in binary executable form in the normal operation of the product. Title, ownership rights, and intellectual property rights in and to the Software remain in Garmin and/or its third-party providers.

You acknowledge that the Software is the property of Garmin and/or its third-party providers and is protected under the United States of America copyright laws and international copyright treaties. You further acknowledge that the structure, organization, and code of the Software, for which source code is not provided, are valuable trade secrets of Garmin and/or its third-party providers and that the Software in source code form remains a valuable trade secret of Garmin and/or its third-party providers. You agree not to decompile, disassemble, modify, reverse assemble, reverse engineer, or reduce to human readable form the Software or any part thereof or create any derivative works based on the Software. You agree not to export or re-export the Software to any country in violation of the export control laws of the United States of America or the export control laws of any other applicable country.

Index

A

accessories 6

B

bands 6

battery

charging 1

life 4

replacing 4

C

cleaning the device 6

customizing the device 3

D

device, care 6

E

Edge 3, 4

G

Garmin Express

registering the device 6

updating software 6

I

installing 1, 2

K

keys 2, 4

M

maps, updating 6

mounting the device 1, 2, 4

O

O-rings. *See* bands

P

pairing 3

remote control 4

product registration 6

R

registering the device 6

remote control 3, 4

pairing 4

replacing the battery 4

resetting, device 6

S

settings 3, 4

software, updating 6

software license agreement 6

specifications 5

T

troubleshooting 6

U

updates, software 6

USB 6

W

wireless devices 4

