



# Edge® Remote Instructions

## Device Overview



①	Lap key. Select to mark a new lap.
②	Action key. Select to start and stop the timer. Hold to turn on the backlight. <b>NOTE:</b> This is the default functionality of the action key. The action key functions are programmable.
③	Page key. Select to scroll forward through the data pages. Hold to scroll through the data pages in reverse.
④	Status LED.

## Status LED

LED Activity	Status
Flashing green	Searching for a paired device.
Alternating red and green	Attempting to pair with a new device.
12 rapid green flashes	Successfully paired with a device.
Four rapid green flashes	Successfully sent a command to a device.
Four rapid red flashes	Failed to send a command to a device.

## Pairing the Remote with Your Edge Device

The first time you connect the Edge remote to your Edge device, you must pair the remote with your device.

- Bring the remote within 3 m (10 ft.) of the device.  
**NOTE:** Stay 10 m (33 ft.) away from other ANT+® sensors while pairing.
- From the **Sensors** menu, select **Add Sensor > Edge Remote**.
- On the remote, hold two keys simultaneously until the status LED starts alternating green and red, and release the keys.  
The remote searches for your device. When the remote pairs successfully, the status LED flashes green 12 times, and the remote name appears on the device.
- Select the remote, and select **Add**.

After the remote is paired, it connects to your device whenever the device is in range and turned on.

## Customizing the Action Key

- From the **Sensors** menu, select **Edge Remote > Sensor Details**.
- Select **Single Press** or **Press and Hold**.
- Select a function for the action key.

For example, you can set the action key to display the map or turn on the backlight.

## Installing the Mountain Bike Mount

- Select a secure location to mount the device where it does not interfere with the safe operation of your bike.
- Place the rubber pad around the handlebar.
- Use the hex key to remove the screw ① from the handlebar connector ②.



- Place the handlebar connector around the rubber pad.
- Replace and tighten the screw.  
**NOTE:** You should check the tightness of the screw periodically.

## Installing the Road Bike Mount

- Select a secure location to mount the device where it does not interfere with the safe operation of your bike.
- Place the rubber disk ① on the back of the bike mount.  
The rubber tabs align with the back of the bike mount so the mount stays in place.



- Attach the bike mount securely using the two bands ②.

## Using the Mounts

Several mounts are available for your remote, either included with the product or as an optional accessory. The mounts allow you to attach the remote to your body, your bike, or other objects.

- Align two of the notches ① with the sides of the mount, and press the remote into the mount until it clicks.



- Press gently on the release tab ②, and lift the remote from the mount.

This product is ANT+® certified. Visit [www.thisisant.com/directory](http://www.thisisant.com/directory) for a list of compatible products and apps.

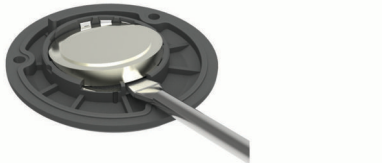
## Replacing the Battery

Before you can replace the battery, you must have a small Phillips screwdriver, a small flat screwdriver, and a CR2032 lithium coin-cell battery.

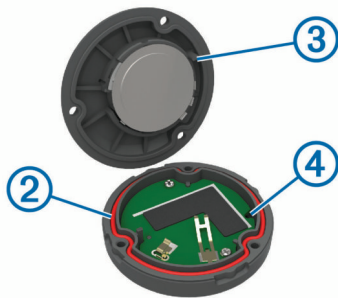
- 1 Using a Phillips screwdriver, remove the three screws from the back plate ①.



- 2 Remove the back plate from the remote.
- 3 Wrap the end of a small flat screwdriver with tape. The tape protects the battery, battery compartment, and contacts from damage.
- 4 Carefully pry the battery from the back plate.



- 5 Install the new battery into the back plate with the positive side facing down.
- 6 Verify the gasket ② is fully seated in the groove.



- 7 Replace the backplate, aligning the post ③ with the gap in the circuit board ④.
- 8 Replace and tighten the three screws.  
**NOTE:** Do not overtighten.

## Remote Specifications

Battery type	User-replaceable CR2032 (3 V)
Battery life	Up to 1.5 yr. (1 hr./day)
Operating temperature range	From -10° to 50°C (from 14° to 122°F)
Radio frequency/protocol	2.4 GHz ANT+ wireless communications protocol
Water rating	5 ATMThe device withstands pressure equivalent to a depth of 50 m. For more information, go to <a href="http://www.garmin.com/waterrating">www.garmin.com/waterrating</a> .

© 2014 Garmin Ltd. or its subsidiaries  
Garmin®, the Garmin logo, and Edge® are trademarks of Garmin Ltd. or its subsidiaries, registered in the USA and other countries. ANT+® is a trademark of Garmin Ltd. or its subsidiaries. These trademarks may not be used without the express permission of Garmin.