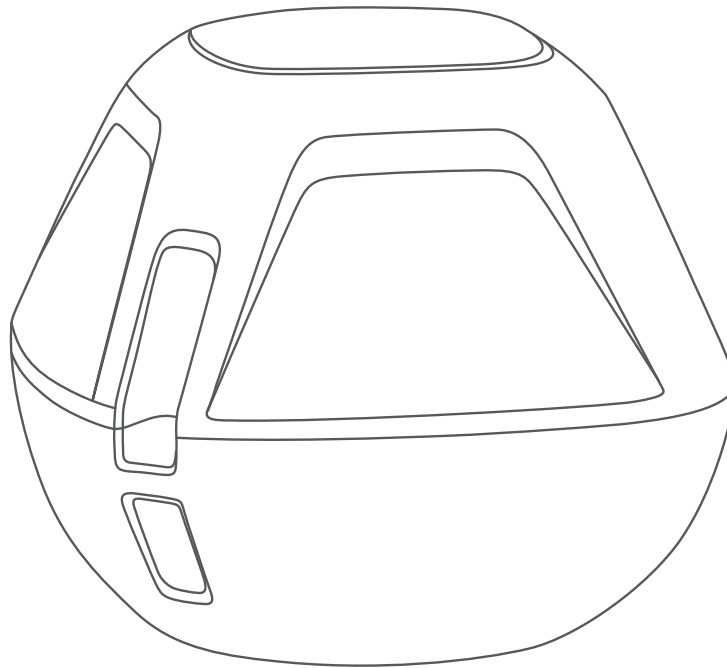


GARMIN®



STRIKER™ CAST

Owner's Manual

© 2022 Garmin Ltd. or its subsidiaries

All rights reserved. Under the copyright laws, this manual may not be copied, in whole or in part, without the written consent of Garmin. Garmin reserves the right to change or improve its products and to make changes in the content of this manual without obligation to notify any person or organization of such changes or improvements. Go to www.garmin.com for current updates and supplemental information concerning the use of this product.

Garmin® and the Garmin logo are trademarks of Garmin Ltd. or its subsidiaries, registered in the USA and other countries. STRIKER™ is a trademark of Garmin Ltd. or its subsidiaries. These trademarks may not be used without the express permission of Garmin.

M/N: 03754 FCC: IPH-03754 IC: 1792A-03754 Garmin Corporation

Table of Contents

Getting Started	1
Charging the Device.....	1
Connecting a Mobile Device.....	2
Attaching a Fishing Line or Tether.....	3
Fishing with the STRIKER Cast Device	3
Sonar Screen.....	4
Status Icons.....	6
Chart	6
Locating the STRIKER Cast Device Using the Chart.....	6
Marking a Waypoint on the Chart.....	7
Editing and Deleting Waypoints.....	7
Garmin Quickdraw™ Contours Mapping	7
Mapping a Body of Water Using the Garmin Quickdraw Contours Feature....	8
Garmin Quickdraw Community.....	8
Device Information	9
Specifications.....	9
Status LED.....	9
Cleaning the Device.....	10
Long-Term Storage.....	10
Updating the STRIKER Cast Device Software.....	10

Getting Started

Charging the Device

⚠ WARNING

This device contains a lithium-ion battery. See the *Important Safety and Product Information* guide in the product box for product warnings and other important information.

NOTICE

To prevent corrosion, thoroughly clean and dry the contacts and the surrounding area before charging or connecting to a computer. Refer to the cleaning instructions ([Cleaning the Device, page 10](#)).

- 1 Plug the small end of the USB cable into the charging port on your device.



- 2 Plug the large end of the USB cable into a USB charging port.
The status LED flashes red when the device is charging.
- 3 Charge the device completely.
The status LED and the device turn off when the device is fully charged.

Automatic On and Off

The device turns on automatically when you put it in the water or when you connect it to USB power.

The device stays on as long as it is in the water, which can be helpful for finding lost devices (GPS models only) ([Locating the STRIKER Cast Device Using the Chart, page 6](#)). The device also stays on as long as the app is connected.

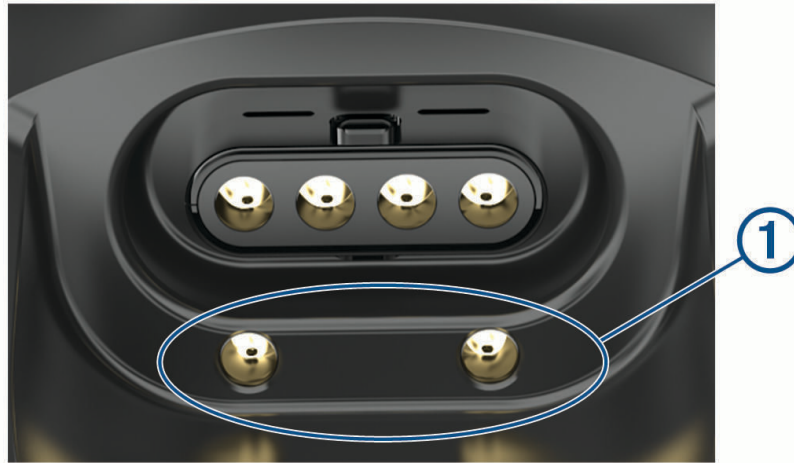
The device turns off automatically after 2 minutes of being disconnected from the STRIKER Cast app and out of the water.

Connecting a Mobile Device

You must connect the STRIKER Cast device to the STRIKER Cast app on your mobile device to see sonar data.

TIP: The status LED flashes red or green and red when the device is ready to connect to the STRIKER Cast app.

- 1 From the app store on your mobile device, install and open the STRIKER Cast app.
- 2 Sign in to your Garmin® account.
TIP: If you do not have an account, select Create One.
- 3 Put the device in water, with the two pins ① in contact with the water, to turn on the STRIKER Cast device and prepare it to connect.



TIP: You can also connect the device to USB power and then immediately disconnect it to turn on the device and prepare it to connect. The status LED flashes green and red when the device is ready to connect to the STRIKER Cast app.

TIP: As a third option to pair, you can connect the device to USB power. The status LED flashes red when the device is ready to connect to the app when connected to power.

- 4 Select **Connect your STRIKER Cast > Start**.
- 5 Select your device from the list.

The serial number is printed on the bottom of the device.

After you connect successfully, a message appears, and you can see sonar data when the device is in the water.

Attaching a Fishing Line or Tether

You can use the included nylon tether or attach the device to a fishing line on a fishing rod.

- Attach the included nylon tether to the device.



- Attach a 20-lb. test or higher fishing line to the device using a #3 barrel swivel with a snap, on a medium-action or heavier fishing rod.

Fishing with the STRIKER Cast Device

⚠ CAUTION

To avoid injury, always be cautious of your surroundings when casting the device.

Towing the device behind a vessel moving at speeds faster than 8km/h (5 mph) or in choppy water conditions could result in poor sonar performance and injury.

NOTICE

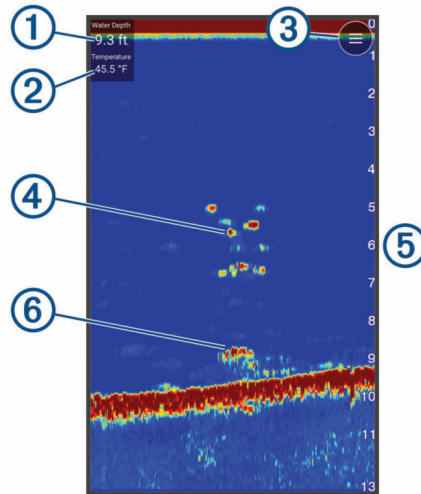
Garmin is not responsible for lost devices.

To prevent corrosion, do not store the device in water, and thoroughly dry the device after use.

You can fish with the device in various ways.

- Cast and leave the device on a dedicated fishing rod so that you can continually change the device location.
NOTE: Repeatedly casting the device as you fish provides a clearer picture of what is below the surface. This is the recommended mode of use.
- Cast and tie off the device using the included tether.
- Tether the device behind a small vessel, such as a kayak.
TIP: It is recommended to tow the device behind canoes and kayaks, but not recommended to tow the device behind power boats while underway.

Sonar Screen



①	Depth
②	Water temperature
③	Water surface
④	Fish
⑤	Depth indicator as the sonar data screen scrolls from right to left
⑥	Structure

TIP: If the sonar view does not show returns, a small air bubble might be trapped on the pins near the power connector. Re-cast the device or tug on the line to clear the bubble.

TIP: If the sonar view shows repetitive bands, the STRIKER Cast device is likely in very shallow water. The bands are echos in the sonar returns. You can adjust the range to resolve this problem.

Adjusting the Level of Detail

You can control the level of detail and noise shown on the sonar screen by adjusting the gain.

If you want to see the highest intensity signal returns on the screen, you can lower the gain or brightness to remove lower intensity returns and noise. If you want to see all return information, you can increase the gain or brightness to see more information on the screen. This also increases noise, and can make it more difficult to recognize actual returns.

1 Select **Sonar** > .


2 Under **Gain**, select an option:

- To allow the device to adjust the gain automatically, select **Auto**.
- To increase or decrease the gain manually, use the slider.

Adjusting the Range of the Depth Scale

Allowing the device to adjust the range automatically keeps the bottom within the lower or outer third of the sonar screen, and can be useful for tracking a bottom that has minimal or moderate terrain changes.

Manually adjusting the range enables you to view a specified range, which can be useful for tracking a bottom that has large terrain changes, such as a drop-offs or cliffs. The bottom can appear on the screen as long as it appears within the range you have set.

- 1 Select **Sonar** > .
- 2 Under **Range**, select an option:
 - To allow the device to adjust the range automatically, select **Auto**.
 - To increase or decrease the range manually, use the slider.

Sonar Settings

Select **Sonar** >  > **More Settings**.

View: Shows a Traditional sonar view or a Flasher view ([Flasher View, page 6](#)).

Frequency: Adjusts the frequency to adapt the sonar for your particular goals and the present depth of the water.

The 455 kHz setting uses a narrower beam width and is better for rough sea conditions. Bottom definition and thermocline definition can be better when using a higher frequency.

The 260 kHz setting uses a wider beam width, which covers a larger area and can allow you to see more targets, but also could generate more surface noise. Wider beam widths generate larger arches for fish target returns, making them ideal for locating fish. Wider beam widths also perform better in deep water, because the lower frequency has better deep water penetration. They can be used to search for structures such as brush piles.

Scroll Speed: Sets the rate at which the sonar scrolls from right to left. A higher scroll speed shows more detail, especially while moving or trolling. A lower scroll speed displays sonar information on the screen longer.

A-Scope: Displays a vertical flasher along the right side of the screen that shows instantaneously the range to targets along a scale.

Fish Symbols: Sets how the sonar displays suspended targets.

Restore Sonar Defaults: Restores the factory default settings for the sonar view.

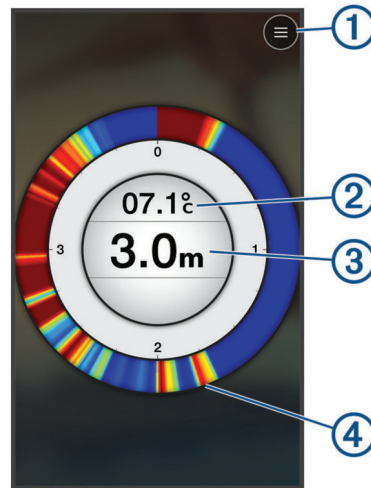
Turning On the Flasher

Select **Sonar** >  > **More Settings** > **View** > **Flasher** > **Back**.

Flasher View

The flasher shows sonar information on a circular depth scale, indicating what is beneath the STRIKER Cast transducer. The flasher is organized as a ring that starts at the top and progresses clockwise. Depth is indicated by the scale inside the ring. Sonar information flashes on the ring when it is received at the depth indicated.

The flasher colors indicate different strengths of the sonar return. The default color scheme follows a traditional sonar color palette, in which yellow indicates the strongest return, orange indicates a strong return, red indicates a weaker return, blue indicates the weakest return, and white indicates no return.



①	Menu
②	Water temperature
③	Depth at the location of the STRIKER Cast transducer
④	Sonar returns

Status Icons

The status icons on the Sonar page provide information about the STRIKER Cast device.

	Bluetooth® signal strength
	STRIKER Cast transducer battery level
	GPS signal strength (GPS models only)

Chart

Locating the STRIKER Cast Device Using the Chart


You can locate the STRIKER Cast device location using the chart in the STRIKER Cast app. This can be helpful when locating a lost device.

1 From the STRIKER Cast app, select **Chart**.

2 Locate the icon.


NOTE: The icon indicates the device location. The icon indicates your location.

Marking a Waypoint on the Chart

- 1 Select a location on the chart.
- 2 From the Radial menu, select  to save the location as a waypoint.
- 3 If necessary, select the waypoint name in the Radial menu to edit the waypoint.

Editing and Deleting Waypoints

You can view, edit, and delete saved waypoints.


- 1 From the STRIKER Cast app, select **Chart**.
- 2 Select  > **Waypoints**.
- 3 Select a waypoint.
- 4 Select an option to view, edit, or delete the waypoint.

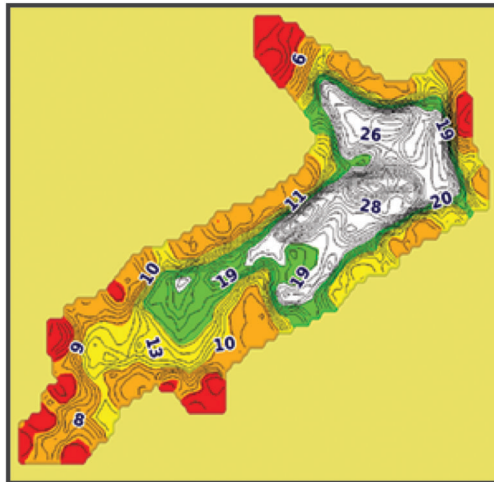
Garmin Quickdraw™ Contours Mapping

WARNING

The Garmin Quickdraw Contours mapping feature allows users to generate maps. Garmin makes no representations about the accuracy, reliability, completeness or timeliness of the maps generated by third parties. Any use or reliance on the maps generated by third parties is at your own risk.

The Garmin Quickdraw Contours mapping feature allows you to instantly create maps with contours and depth labels for any body of water (with GPS models only).

When the Garmin Quickdraw Contours feature records data, a colored circle surrounds the  icon. This circle represents the approximate area of the map that is scanned by each pass.



A green circle indicates good depth, GPS position, and a good speed. A yellow circle indicates good depth and GPS position, but the speed is a little too fast. A red circle indicates poor depth information, poor GPS position, or a speed that is too fast.

Mapping a Body of Water Using the Garmin Quickdraw Contours Feature

Before you can generate a map using the Garmin Quickdraw Contours feature, you must have sonar depth and GPS position data.

You can only record Garmin Quickdraw Contours mapping only using models that have GPS. If your device does not have GPS, you cannot record contours, but you can download community contours.

1 From the STRIKER Cast app, select **Chart**.

2 Select  > **Record**.

As you fish with the STRIKER Cast device, a map is generated.

A green circle indicates good depth, GPS position, and a good speed. A yellow circle indicates good depth and GPS position, but the speed is a little too fast. A red circle indicates poor depth information, poor GPS position, or a speed that is too fast.


When recording is complete, select  > **Record** to stop recording.

Garmin Quickdraw Community

The Garmin Quickdraw Community is a free, public, online community that enables you to share your Garmin Quickdraw Contours maps with others. You can also download maps other users have created.

Downloading Garmin Quickdraw Community Maps

You can download Garmin Quickdraw Contours maps that other users have created and shared with the Garmin Quickdraw Community.

1 From the STRIKER Cast app on your mobile device, select **Chart** >  > **Quickdraw** > **Download from Community**.

2 Use the map and search features to locate an area to download.

The red dots represent Garmin Quickdraw Contours maps that have been shared for that area.

3 Tap the map to select an area.

4 Drag the box to move the download area, if necessary.

5 Drag the corners to change the download area, if necessary.


6 Select **Download Area**.

You can now view depth information in the downloaded area on the Chart page.

Sharing Your Garmin Quickdraw Contours Maps with the Garmin Quickdraw Community

You can share Garmin Quickdraw Contours maps that you have created and shared with others in the Garmin Quickdraw Community.

When you share a contour map, only the contour map is shared. Your waypoints are not shared.

1 From the STRIKER Cast app on your mobile device, select **Chart** >  > **Quickdraw** > **Contribute to Community**.

2 Read and agree to the terms.

As you create contour maps, they are transferred to the community automatically.

Device Information

Specifications

Battery type	Rechargeable, built-in lithium-ion battery
Battery life	10 hr. typical use
Battery charge time	Approximately 1.5 hr.
Power adapter (not included in the box, recommended)	5.5 V, 1.0 A. Standard USB wall outlet, computer port, or vehicle charger.
Included tether length	5 m (16 ft.)
Water rating	Floatable, IEC 60529 IPX7 ¹
Weight	75 g (2.64 oz.)
Operating temperature range	From -20° to 60°C (from -4° to 140°F)
Charging temperature range	From 5° to 40°C (from 41° to 104°F)
Compass-safe distance	2.54 cm (1 in.)
Wireless frequency and transmit power	2.4 GHz @ 7.78 dBm maximum
Wireless range	60 m (200 ft.) ²
Sonar frequency	260/455 kHz
Sonar depth range	From less than 0.6 m to 45 m (from less than 2 ft. to 150 ft.)
Sonar beamwidth	260 kHz: 22-degrees x 63-degrees 455 kHz: 9-degrees x 14-degrees

Status LED

LED Activity	Connection Status	Status
Blinking red	Connected to USB power	Charging
Off	Connected to USB power	Fully charged
Blinking green and red	Disconnected from USB power	Ready to connect to the app
Off	Disconnected from USB power and connected to the app	Connected to the app
Three red blinks	Disconnected from USB power, disconnected from app, and out of the water for more than two minutes	Turning off
Blinking amber	Not applicable	An error occurred. To resolve the error, charge the device. If that does not resolve the issue, contact Garmin product support.

¹ For more information, go to garmin.com/waterrating.

² The wireless range can be affected by the water conditions.

Cleaning the Device

NOTICE

Even small amounts of moisture can cause corrosion of the electrical contacts when connected to a charger. Corrosion can prevent charging and data transfer.

Do not use harsh or solvent-based cleaners on the device. Using such cleaners may damage the product and void the warranty.

- 1 Clean all water and residue from the device using a clean, damp cloth soaked in fresh water.
- 2 Use a mild detergent to remove heavy buildup of salt or stains.
- 3 Wipe the device dry.

Allow the device to dry completely, especially before connecting the charger.

Long-Term Storage

When you do not plan to use the device for several months, you should charge the battery to at least 50% before you store the device. You should store the device in a cool, dry place with temperatures around the typical household level. After storage, you should fully recharge the device before using it.

Updating the STRIKER Cast Device Software

Before you can update the STRIKER Cast software, the device must have a battery charge of 50% or higher.

- 1 Open the STRIKER Cast app.
When there is a software update available for the device, the Settings button displays a red number.
- 2 Select **Settings > STRIKER Cast > Software Updates > Install**.
- 3 Select **Done**.

