

GARMIN

www.garmin.com/marine

Follow the leader.

Inland Waters

Digital cartography solutions for U.S. freshwater fishing and boating.

GARMIN

GARMIN INTERNATIONAL, INC.
1200 East 151st Street, Olathe, KS 66062
t 913.397.8200
f 913.397.8282

© 2009 Garmin Ltd. or its subsidiaries

M00-10225-00 0508



CLEAR, COOL WATER

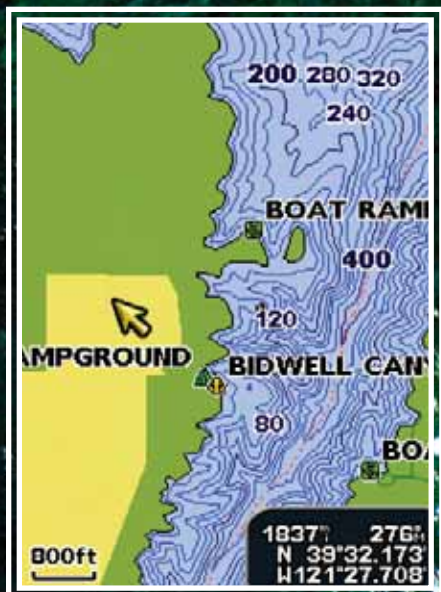
It covers nearly three-fourths of our planet. And provides a vast, refreshing world of recreational opportunities. It's the liquid of life: H₂O. And whether you're into fishing, cruising, diving, active watersports, or just getting away from the daily grind – when you want to make the most of every hour you spend on the water, trust Garmin to guide the way with the very best in detailed cartography.

For U.S. inland lakes and waterways, Garmin offers a variety of easy-to-use GPS mapping products. These electronic charts fit a wide spectrum of Garmin chartplotters and navigation devices, with displays styled to match the look of paper charts in digital electronic form. Coverage includes thousands of freshwater lakes – in all shapes and sizes – with helpful reference on nearby roads, boat ramps, campgrounds, marinas, and other recreational amenities. Sharp, colorful, graphics let you see every lake contour and feature with a minimum of panning and zooming to bring specific details into focus. And for easy data loading directly to your compatible plotter or portable GPS, Garmin offers plug-in versions of its Inland Lakes, Inland Lakes Vision™, and LakeMaster® cartography on pre-programmed microSD™ and SD™ cards – as well as DVD versions of Inland Lakes and

LakeMaster for downloading from your computer. You can also go to Garmin's website (www.garmin.com) to preview and purchase downloads of these products online. In addition, such popular recreational spots as Lake Murray and Lake Winnepesaukee are now available separately as individual downloads from the Garmin website.

Compare the features, the detail, the value, quality and convenience: You'll see that nothing goes better with boats and water than these clear, cool cartography products from Garmin.





INLAND LAKES

When you launch for a day of fun on the water, it's great to know you have the cartography in hand to navigate those lakes and channels like a local. That's why Inland Lakes mapping from Garmin belongs on your GPS chartplotter or portable navigator.

From small, local reservoirs to the biggest lakes in the country, this comprehensive software offers coverage of over 14,000 freshwater bodies of water throughout the continental U.S. For depth guidance, you'll find detailed contour lines on most inland lakes. In addition, the charts show high-definition shorelines, navigation aids, wrecks and obstructions, river and creek channels, boat ramps and campgrounds, plus major roads and highways in the area.

Inland Lakes cartography is available in a variety of formats: DVD, preprogrammed Garmin data cards, or plug-in microSD™ and SD™ cards which make it easy to load the map data directly onto your compatible Garmin device without using a PC. Each data card and microSD card offers coverage for one of five separate regions in the U.S., while the DVD provides coverage of

the entire continental U.S., with map data that can be viewed on your computer as well as your GPS. The DVD includes MapSource®, which provides the ability to do trip and waypoint planning on the computer, while providing a "big picture" view of the lake before you venture onto the water.

Downloading the DVD data to your Garmin unit requires a simple connection to your computer using a USB interface cable (sold separately). What's more, now that Garmin makes Inland Lakes available for download directly from our website (www.garmin.com), you can use your computer, plus high-speed internet access, to load the exact lake regions you want onto a blank data card – then simply plug the card into its compatible Garmin navigation device and head for the lake.

Whichever data-loading option you choose, it's easy to see that our Garmin marine team is committed to making freshwater navigation as safe, smart, and convenient as today's technology will allow. No wonder Garmin Inland Lakes cartography is fast becoming the benchmark of American boating.

INLAND LAKES HIGHLIGHTS* :

- Detailed coverage for over 14,000 U.S. freshwater lakes
- Shows marinas, fuel, boat ramps and campgrounds
- High-definition shorelines and bathymetry on select lakes
- Includes nearby highway and road detail
- Shows navigation aids, wrecks and obstructions
- Searchable by lake or by city
- Includes rivers, streams, and channels
- For use with Garmin chartplotters or GPS devices

*NOTE: Not all lakes contain all features listed.

INLAND LAKES VISION

With capabilities enabled by Garmin's g2 Vision® technology, this premium version of Inland Lakes brings even more detail, dimension and graphical sophistication to an elite group of Garmin chartplotters and navigators. See it, try it, experience it: You'll never look at freshwater mapping quite the same way again.

Simply by plugging an Inland Lakes Vision card into your compatible high-end Garmin device, you can tremendously expand its full graphical capabilities – while bringing a fresh new perspective to situational awareness. The Vision version of Inland Lakes offers all the standard cartography features, plus upgraded high-resolution aerial imagery for added realism on your map display. The software also includes detailed shoreline depictions and navigation data for over 14,000 inland lakes, rivers and waterways, as well as depth contours, boat ramps, mile markers and more.

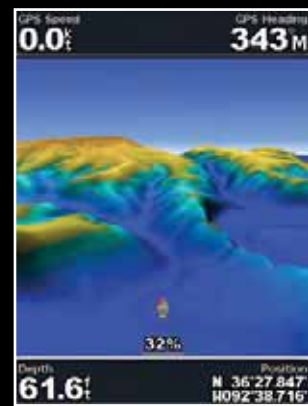


High-Resolution Satellite Imagery

On select lakes, you can use this feature to overlay satellite images on the land, water, or both. By selecting varying levels of opacity, you can customize how the satellite imagery will appear on your navigation chart.

You'll appreciate the fast redraws and realistic depictions. Plus, on many of America's most popular lakes, the Vision software enables true 3-D "mariner's eye" perspective views of your surroundings above the waterline, as well as a unique "fish eye" underwater view depicting bathymetry data as realistic lake-bottom terrain.

The mapping is object-oriented, which means you can pan to an object on the chart and instantly view information about that point. Geo-referenced chart imagery lets you "navigate on the picture" with a dynamic presentation of your boat's current position. Plus, handy Auto Guidance technology scans relevant chart features and obstructions to suggest the best passageway to your destination. Available only on preprogrammed SD™ and microSD™ cards – or by direct downloads from Garmin's website – Inland Lakes Vision™ is the most feature-rich freshwater mapping software Garmin has ever offered. When it comes to taking the guesswork out of navigation, nothing else even comes close.



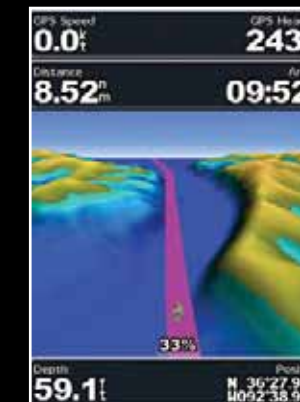
Mariner's Eye 3-D

Providing a bird's eye overhead perspective view of your chart position, this 3-D visual aid is especially helpful when navigating tricky coves, channels, bridges or other map features.



Fish Eye 3-D

This underwater perspective view shows realistic lake bottom features and contours, based on bathymetric mapping data. You can customize the view to interface with sonar data as well.



Auto Guidance technology

Like a knowledgeable guide, Garmin Auto Guidance technology helps simplify navigation by searching the relevant chart data to calculate and display the best route for safe passage.

LET'S COMPARE CAPABILITIES:

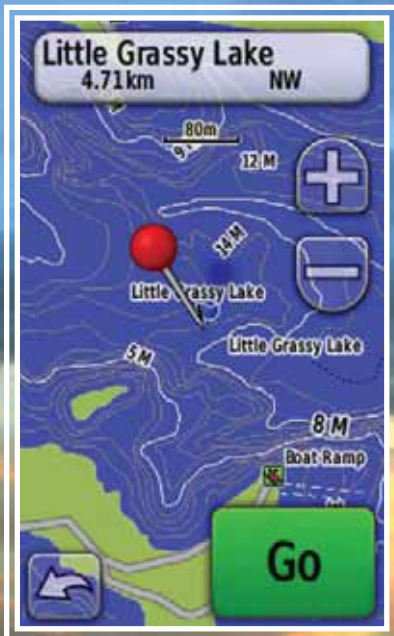
INLAND LAKES

INLAND LAKES VISION

- Detailed coverage for over 14,000 U.S. lakes
- High-definition shorelines and bathymetry on select lakes
- Includes rivers, streams, and channels
- Shows marinas, fuel, boat ramps and campgrounds
- Includes nearby highway and road detail
- Searchable by lake or by city
- High-resolution satellite imagery for select lakes
- Mariner's Eye 3-D
- Fish Eye 3-D
- Auto Guidance technology (suggested routings)

-
-
-
-
-
-
-
-
-
-

*NOTE: Not all lakes contain all features listed.



LAKEMASTER®

When you're serious about fishing in those great freshwater lakes of the northern U.S., you want cartography that's really focused in-depth on the region. In other words, you want LakeMaster. Developed by Garmin for freshwater use with your compatible chartplotter or mapping GPS, LakeMaster maps provide detailed lake profiles and navigation data for a long list of regional lakes and waterways.

With amazing bottom detail and one-foot contours for many lakes, LakeMaster is sure to help you key in on prime fishing locations in Michigan, Minnesota, Wisconsin, the Dakotas, Iowa/Illinois, and in the boundary waters along the Canadian border.

LakeMaster cartographic features include highly detailed shore-line data and amazing depth contours, underwater structures and bottom information created from meticulous on-the-water surveys – along with shorelines, islands, obstructions, bays,

campsites, access points, and more. LakeMaster maps also include full statewide highways and road coverage to help you navigate easily to and from the lake.

Your compatible Garmin GPS will accurately place your boat's location on the map, as well as showing detailed tracklines and waypoints. And map zooming capabilities down to 80 feet in scale lets you view features of interest in super close-up detail.

LakeMaster is available on CD-ROM, preprogrammed microSD™ and SD™ cards, and Garmin data card for Minnesota, Michigan, Wisconsin, Iowa-Illinois, and the Dakotas. Lake of the Woods/Rainy Lake is available only on preprogrammed microSD™, SD™ card, and Garmin data card. To make things even more convenient, all of the above LakeMaster maps can also now be downloaded directly from the Garmin website.

To find out more, check out the options at www.garmin.com

LAKEMASTER®
www.lakemap.com

LAKEMASTER® HIGHLIGHTS* :

- Provides detailed shorelines and depth contours
- Features one-foot contours for many lakes
- Detailed map data created from on-the-water surveys
- Shows islands, reefs, points, bays, inlets and more
- Offers zooming capabilities down to 80 feet in scale
- Includes nearby highway and road detail
- Geo-referenced to show boat location on map
- For use with Garmin chartplotters or GPS devices

FIND THE COVERAGE YOU NEED FOR THE WATERS YOU'RE NAVIGATING.

All the newest versions of Garmin freshwater cartography are designed to provide convenient viewing of regionalized lake maps on select Garmin chartplotters and handheld navigators. This cartography is offered in a variety of formats for easy data loading or updating. For example, Inland Lakes, Inland Lakes Vision™, and LakeMaster® products are all available on pre-programmed microSD™ and SD™ cards for direct plug-and-play loading into your compatible unit (no computer interface required). The chart below shows the media options available for each product.

One of five specific U.S. coverage regions (see map on right) is contained on each data card for Inland Lakes and Inland Lakes Vision. Also, DVD versions of Inland Lakes and LakeMaster are available on disc for downloading to your unit from your computer. You'll need a USB interface cable (sold separately) to do the download from your computer to your GPS unit. The Inland Lakes DVD includes all the lake maps for the entire conti-

ental U.S. So, you can simply download the specific lakes or regions you want.

For even more speed and convenience, all of the freshwater map products listed above can now be previewed, purchased and downloaded directly from the Garmin website (www.garmin.com). So, wherever you find a high-speed internet connection, you can instantly connect with the best in freshwater lake cartography.



The same great map detail offered on preprogrammed data cards and DVDs is now available for easy download on the Garmin website. You're just a few clicks away from 14,000 awesome lakes and waterways.



LAKEMASTER® REGIONS



WAYS TO ACCESS INLAND WATERS-

INLAND LAKES

INLAND LAKES VISION

LAKEMASTER

- microSD™/SD™ cards
- Garmin data cards
- DVD
- Download from Garmin website

-
-
-
-

-
-
-
-

-
-
-
-