



The Fishfinder 100 and 160, along with the high-resolution Fishfinder 240, are depth sounders designed for serious anglers. Their exclusive technology separates fish from

Now you can see fish more clearly

thermoclines and structure, giving you a clear picture of what's beneath your boat. But don't be intimidated by the technology.

GARMIN fishfinders are simple to operate, with features like a control bar that identifies the most commonly used fishing settings. This allows you to configure settings without searching through menus.

If it's fish you're looking for, take a look at GARMIN.



Fishfinder specifications

Features

- Display options:** Auto ranging, 2X and 4X auto and manual zoom, 3 Fish Symbol™ sizes, adjustment bar
- Alarms:** Deep water alarm, shallow water alarm, 3 size fish alarm, battery low alarm
- Transducer auto-sense:** Automatically displays speed and temp data without menus
- See-Thru™ technology:** Shows weak/strong returns simultaneously
- Depth Control Gain (DCG™):** Automatically adjusts fishfinder sensitivity according to depth

Power down backup of setting:

Customer setting not lost when unit is turned off

Physical

- Case:** Fully gasketed, high-impact plastic alloy
- Keys:** Backlighted
- Temperature range:** 5°F to 158°F (-15°C to 70°C)
- Waterproof:** IEC 529, level IPX-7
Submerged to 1 meter for 30 minutes

Accessories

Standard:

- Surface mount with knobs
- Wiring adapter cable
- Transom mount transducer with temp*
- User's manual
- Quick reference guide
- Protective front cover (standard on FF 160 and 240)

Optional:

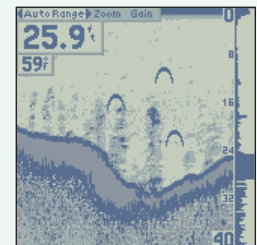
- Second mounting kit
- Portable power case

Optional Transducers:

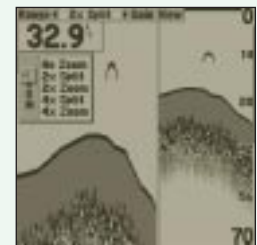
- Trolling motor mount adapter
- Plastic transom mount with depth/temp
- Speed sensor
- Bronze thru-hull with depth/temp
- Bronze thru-hull with depth/speed/temp
- Plastic thru-hull with depth/temp
- In-hull
- Temperature sensor
- Suction cup adapter



The FF 100 Portable comes with power case and suction-mount transducer. Power case works with other GARMIN fishfinders and can be purchased separately.



A unique control bar makes operations easy, leaving you more time to catch fish (Fishfinder 160 with flasher feature shown).



Split the high-resolution display into separate zoom windows to focus on areas of interest (FF 160 and 240 only).

© 1999 GARMIN Corporation



GARMIN International
1200 East 151st Street
Olathe, Kansas 66062, U.S.A.
913/397.8200 fax 913/397.8282

GARMIN (Europe) Ltd.
Unit 5, The Quadrangle,
Abbey Park Industrial Estate,
Romsey, SO51 9AQ, U.K.
44/1794.519944 fax 44/1794.519222

GARMIN (Asia) Corporation
3rd Floor, No.1, Lane 45, Pao-Hsing Road
Hsin-Tien, Taipei, Taiwan
886/2.2917.3773 fax 886/2.2917.1758

www.garmin.com

Specifications are preliminary and subject to change without notice.

* Also available without transducer

** Depth capacity is dependent on water salinity, bottom type and other water conditions.

Here's how the units are different

Fishfinder 100

Fishfinder 160

Fishfinder 240



	Fishfinder 100	Fishfinder 160	Fishfinder 240
display	160 H x 100 W pixels 3.9" diagonal (9.9cm) 3.3" x 2" (8.3 x 5 cm) standard LCD with backlighting	160 x 160 pixels 4.6" diagonal (11.7 cm) 3.3" x 3.3" (8.3 x 8.3 cm) standard LCD with backlighting	240 x 240 pixels 4.6" diagonal (11.7 cm) 3.3" x 3.3" (8.3 x 8.3 cm) high-contrast LCD with backlighting
sonar power output	150 watts (RMS) 1200 watts (peak to peak)	400 watts (RMS) 3200 watts (peak to peak)	400 watts (RMS) 3200 watts (peak to peak)
frequency	200 kHz	200 kHz	200 kHz
depth	200 foot max depth**	900 foot max depth**	900 foot max depth**
power input	10 to 17v DC w/ high voltage protection	10 to 15v DC w/ high voltage protection	10 to 15v DC w/ high voltage protection
power usage	3.5 watts max	10 watts max	10 watts max
nominal power	12v DC at 0.28 amps	12v DC at 0.8 amps	12v DC at 0.8 amps
size	4.9"H x 5.3"W x 2.7"D (12.5 x 13.5 x 6.9 cm)	4.93"H x 6.3"W x 3.0"D (12.5 x 16 x 7.6 cm)	4.93"H x 6.3"W x 3.0"D (12.5 x 16 x 7.6 cm)
weight	13 oz.	1 lb. 6 oz.	1 lb. 6 oz.