

Brilliant color or value-priced grayscale.

Either choice leads to great navigation

performance with Garmin's newest GPS

Chart your course with GPS to navigate with confidence.

chartplotters: the GPSMAP® 172/172C

and GPSMAP® 178/178C Sounder. These

rugged, waterproof, fixed-mount units

pack a boatload of wayfaring features

into sleek, space-saving formats. Bright,

sunlight-readable 4.5-inch LCD screens

offer outstanding clarity and detail –

while 200-MHz processors ensure

lightning-quick panning, zoom and map

redraw rates. The Sounder version

GPSMAP 178/178C adds powerful sonar

capabilities to the mix, leaving fish

nowhere to hide. And preprogrammed

or user-programmed data cartridges can

be used to enhance the plotters' built-in

basemaps with detailed BlueChart®

marine cartography.





Navigation features

Waypoints/icons: 3,000 waypoints with name, symbol, depth and water symbols, 10 proximity

Routes: 50 reversible routes with up to 50 points each, plus MOB and TracBack® modes

Tracks: 10,000 point automatic track log; 15 saved tracks (up to 700 track points each) let you retrace your path in both directions

Trip computer: Trip odometer, stopped time, moving average, moving time, total average, total time, maximum speed, odometer

Alarms: Anchor drag, arrival, off-course, proximity waypoint and clock

Tables: Built-in celestial tables for sun and moon by date and position

Tides: Tide data (U.S.A. only)

Map datums: More than 106 including user datum

Position format: Lat/Lon, UTM/UPS, Maidenhead, MGRS, Loran TDs and other grids

DSC Support: Yes

GPS performance

Receiver: WAAS enabled, 12 parallel channel GPS receiver continuously tracks and uses up to 12 satellites to compute and update your position

Acquisition times:
Warm: Approximately 15 seconds
Cold: Approximately 45 seconds
AutoLocate™: Approximately 5 minutes

Update rate: 1/second, continuous

GPS accuracy:
Position: < 15 meters, (49 feet) 95% typical
Velocity: 0.05 meter/sec steady state

Interfaces: NMEA 0183 (2 inputs), RTCM 104 DGPS corrections and outputs

Antenna: Choice of Internal or External QuadHelix (GA 29 remote marine mount with 30' cable)

Plotter/moving map features

Basemap: Built-in Worldwide Marine basemap to 32 nm with coastlines, rivers, lakes, political boundaries, tide data for the U.S., cities, interstates, U.S. state highways and major thoroughfares

Uploadable maps: Accepts preprogrammed or user-programmed Garmin data cards containing optional MapSource cartography

Plotting scales: 20 feet to 800 nm with dedicated push-button zoom control

Power

Source: 10-35 vDC

Usage: GPSMAP 172C/172 = 6 watts
 GPSMAP 178C/178 sounder = 14 watts

Physical

Size: 4.9"H x 6.3"W x 2.8"D (122.5 x 157.5 x 71 mm)

Weight: 172C/172 = 1 lb. 1 oz.
 178C/178 = 1 lb. 3.5 oz.

Display: 3.2" W x 3.2" H, 320 x 320 pixels with adjustable CCFL backlighting
 172C/178C = 256 color CSTN
 172/178 = 10-level FSTN

Case: Fully gasketed, high impact plastic alloy, waterproof to IEC 60529 IPX7 standards

Temperature range: 5°F to 131°F (-15°C to 50°C)

User data storage: Internal backup of user settings, no memory battery required

Accessories

Standard: Chartplotting receiver
 Remote antenna with 30' cable or internal antenna
 Power/data cable
 User's manual
 Single-knob tilt & swivel bracket
 Quick start guide
 Unit cover
 Various transducers (178/178C only)

Optional: Compatible with most Garmin MapSource® products, including Recreational Lakes with Fishing Hot Spots®, BlueChart®, Recreational Lakes with Fishing Hot Spots®, Topo. (Garmin data cartridges required)

GPSMAP 172/172C chartplotter is compatible with optional GSD 20 remote module to add full Sounder capabilities

Depth Sounder features (GPSMAP 178/178C Sounder only)

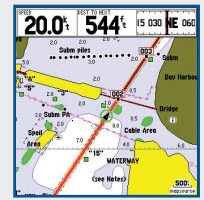
Frequency: 50/200 kHz or 200 kHz

Transmit power: 500 watts (RMS), 4000 watts (peak-to-peak) w/ dual frequency transducer
 400 watts (RMS), 3200 watts (peak-to-peak) w/ single frequency transducer

Performance features: Depth Control Gain (DCG®) for detailed bottom and structure views; adjustable range, gain and zoom; 3-level fish ID; graphic whitelist provides clear image of bottom hardness and structure; See-Thru® technology separates fish returns from thermoclines and structure

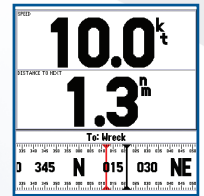
Alarms: Shallow water, fish by size, anchor drift, timer, temperature, and low battery voltage

Transducers: Choice of single or dual frequency transom-mount transducers. Also available without transducer



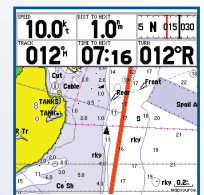
Map Page

Data cartridges provide optional MapSource data for enhanced map detail



Big Numbers Option

Enlarge size of data fields to make them readable from a distance



Navigation page

Shows distance, speed and direction to waypoint, helping you stay on course

©2004 Garmin Ltd. or its subsidiaries



Garmin International, Inc.
 1200 East 151st Street
 Olathe, Kansas 66062, U.S.A.
 913/397.8200 fax 913/397.8282

Garmin (Europe) Ltd.
 Unit 5, The Quadrangle
 Abbey Park Industrial Estate
 Romsey, SO51 9DL, U.K.
 44/1794.519944 fax 44/1794.519222

Garmin Corporation
 No. 68, Jangshu 2nd Rd.
 Shijr, Taipei County, Taiwan
 886/2.2642.9199 fax 886/2.2642.9099

www.garmin.com

Specifications are preliminary and subject to change without notice.

