

On the road, on the trail, or on the water,
the Garmin GPSMAP 60 series is your
ideal guide to the great outdoors.

See your way clear. In brilliant color.

Both the 60C and 60CS versions are rugged, waterproof, full-color navigators that feature a built-in Auto route basemap and 56 MB of memory for optional MapSource® topo, marine and city map downloads (via USB and/or Serial port connections). Both units are WAAS-enabled for extreme high accuracy to within 3 meters. And both feature auto-save of track data to help guide you back to any point along your route. In addition, the "sensor version" 60CS also features electronic compass and barometric altimeter – making it the trailblazing tool of choice for hikers and climbers.



specifications



Navigation features

Waypoints/icons: 1000 with name and graphic symbol, 10 nearest (automatic), 10 proximity

Routes: 20 reversible routes with up to 250 points each, plus MOB and TracBack® modes

Tracks: 10K point automatic track log; 20 saved tracks 500 points each let you retrace your path in both directions

Trip computer: Current speed, average speed, resettable max. speed, trip timer and trip distance

Alarm clock: Anchor drag, approach and arrival, off-course, proximity waypoint, shallow water and deep water

Tables: Built-in celestial tables for best times to fish and hunt, sun and moon rise, set and location

Map datums: More than 100 plus user datum

Position format: Lat/Lon, UTM/UPS, Maidenhead, MGRS, Loran TDs and other grids, including user grid

GPS performance

Receiver: WAAS enabled, 12 parallel channel GPS receiver continuously tracks and uses up to 12 satellites to compute and update your position

Acquisition times:
Warm: Approximately 15 seconds
Cold: Approximately 45 seconds
AutoLocate™: Approximately 5 minutes

Update rate: 1/second, continuous

GPS accuracy:
Position: < 15 meters, 95% typical*
Velocity: 0.05 meter/sec steady state

DGPS (USCG) accuracy:
Position: 3-5 meters, 95% typical
Velocity: 0.05 meter/sec steady state

DGPS (WAAS) accuracy:
Position: < 3 meters, 95% typical
Velocity: 0.05 meter/sec steady state

Dynamics: 6 g's

Interfaces: RS232 with NMEA 0183, RTCM 104 DGPS data format and proprietary GARMIN

Antenna: Built-in quadrifilar, with external antenna connection (MCX)

Differential: DGPS, USCG and WAAS capable

Moving map features

Basemap: (GPSMAP 60C and GPSMAP 60CS) Detailed routable basemap with cities, highways, interstates, exit info, rivers, lakes; preloaded with worldwide cities

Uploadable maps: (GPSMAP 60C and GPSMAP 60CS) Accepts up to 56 megabytes of downloaded map detail from a variety of optional MapSource® CDs**

Electronic compass feature (GPSMAP 60 CS only)

Accuracy: ±2 degrees with proper calibration (typical); ±5 degrees extreme northern and southern latitudes

Resolution: 1 degree

Barometric altimeter feature

Accuracy: 10 feet with proper calibration (user and/or automatic calibration)

Resolution: 1 foot

Range: -2,000 to 30,000 feet

Elevation computer: Current elevation, resettable minimum and maximum elevation, ascent/descent rate, total ascent/descent, average and maximum ascent/descent rate

Pressure: Local pressure (mbar/inches HG), 12-hour automatic pressure trend recording

Power

Source: Two "AA" batteries (not included)
Battery life: Up to 30 hours (typical use)

Physical

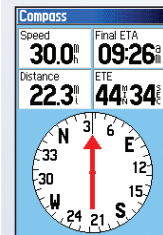
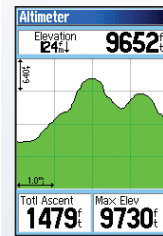
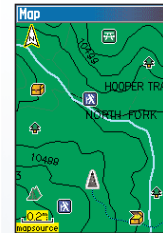
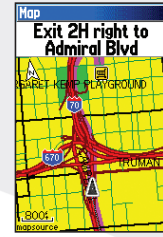
Size: 2.4W x 7.1H x 1.3D inches (61mm x 180mm x 33mm)
Weight: 5.4 oz. (153 g) est.
Display: 1.2 x 2.2 inches (31mm x 56mm) (256 transfective) color TFT (160 x 240 pixels)

Case: Waterproof to IPX-7 standards
Temp. range: 5°F to 158°F (-15°C to 70°C)

Accessories

Standard: PC/USB interface cable
 Belt clip
 Owner's manual
 Quick reference guide
 Wrist strap

Optional: Automotive Navigation Kit (includes City Select®)
 Automotive mount
 Marine mount
 Suction cup mount
 Carrying case
 12-volt adapter cable
 Power/data cable
 Remote GPS antenna
 MapSource™ CD-ROMs
 Instructional video



With enhanced street map detail from optional MapSource® City Select CDs, you can look up destinations and view automatic point-to-point routes.

The GPSMAP 60 series accepts downloaded map detail, including topo maps with elevation information.

The barometric altimeter feature on the GPSMAP 60CS provides elevation profiles for climbers and hikers.

Garmin's "sensor version" GPSMAP 60CS also features a large, easy-to-read electronic compass display

©2003 Garmin Ltd. or its subsidiaries



Garmin International Inc.
 1200 East 151st Street
 Olathe, Kansas 66062, U.S.A.
 913/397.8200 fax 913/397.8282

Garmin (Europe) Ltd.
 Unit 5, The Quadrangle
 Abbey Park Industrial Estate
 Romsey, SO51 9DL, U.K.
 44/1794.519944 fax 44/1794.519222

Garmin Corporation
 No. 68, Jangshu 2nd Rd.
 Shijr, Taipei County, Taiwan
 886/2.2642.9199 fax 886/2.2642.9099

www.garmin.com

Specifications are preliminary and subject to change without notice.

* Subject to accuracy degradation to 100m 2DRMS under the U.S. Department of Defense imposed Selective Availability Program.

** These units are also able to transfer waypoints, routes and tracks between the PC and GPS using MapSource.™

GPSMAP 60C

GPSMAP 60CS

