

WITH WAAS
for even greater accuracy

The GPSMAP 182 — available in a grayscale or a sunlight-readable color display — and the GPSMAP 232 feature high-speed processors, which make for extremely fast redraw rates.

Full-featured chartplotters that are quick on the draw

These chartplotters have built-in WAAS receivers, which means they can pinpoint your location within 3 meters on average. Their built-in worldwide basemaps provide coastline detail, U.S. tide data and inland cartography. Detail gets even better when you plug in an optional data card with GARMIN's exclusive BlueChart™ marine cartography. Like all GARMIN marine products, these units are tough enough to stand up to saltwater, sunlight and other elements.



specifications



Navigation features

- Waypoints/icons:** 3000 with name, symbol and comments; support for proximity waypoints
- Routes:** 50 reversible routes up to 50 (254 for 182C) points each, plus MOB and TracBack® modes
- Track log:** 3000 point automatic track log, 15 saved tracks; 500 points per saved track, lets you retrace your path in both directions
- Alarms:** Anchor drag, arrival, off course, proximity waypoint and clock
- Tables:** Built-in celestial tables with sun and moon rise, set and location. Tide tables for the U.S.
- Map datums:** More than 100, plus user datum
- Position format:** Lat/Lon, UTM/UPS, Loran TDs and other grids, including user grid
- Languages:** 10

GPS performance

- Receiver:** WAAS enabled, 12 parallel channel GPS receiver continuously tracks and uses up to 12 satellites to compute and update your position
- Acquisition times:**
 - Warm:** Approximately 15 seconds
 - Cold:** Approximately 45 seconds
 - AutoLocate™:** Approximately 5 minutes
- Update rate:** 1/second, continuous

GPS accuracy:

- Position:** < 15 meters, 95% typical*
- Velocity:** 0.05 meter/sec steady state

DGPS (USCG) accuracy:

- Position:** 3-5 meters, 95% typical
- Velocity:** 0.05 meter/sec steady state

DGPS (WAAS) accuracy:

- Position:** 3 meters, 95% typical
- Velocity:** 0.05 meter/sec steady state

Dynamics:

6g's

Interfaces:

2-RS232 with NMEA 0183, RTCM 104 DGPS data format and proprietary GARMIN

Antenna:

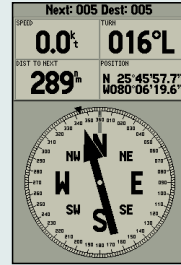
GPSMAP 182 = GA 29 remote marine mount with 30' cable or bail mount antenna
GPSMAP 232 = GA 29 remote marine mount with 30' cable

Plotter/moving map features

- Basemap:** Built-in worldwide basemap to 32 nm with coastlines, rivers, lakes, political boundaries, tide data for the U.S., cities and interstates
- Data cartridges:** Preprogrammed micro cartridges containing detailed BlueChart™ marine cartography
- Power**
- Source:** 8-35v DC
- Usage:** 4 watts max. at 13.8v DC
- Physical**
- Size:** GPSMAP 182/182C = 6.3" W x 6.2" H x 2.6" D
GPSMAP 232 = 7.7" W x 7.5" H x 2.6" D
- Weight:** GPSMAP 182/182C = 1.7 lbs. (.77 kg)
GPSMAP 232 = 2 lbs. (.91 kg)
- Display:** GPSMAP 182 = 5.5" diagonal (14.0 cm) high-resolution, 10-level grayscale LCD with backlighting (240 x 360 pixels)
GPSMAP 182C = 5.0" diagonal (12.7 cm) 16-color TFT display with backlighting (234 x 320 pixels)
GPSMAP 232 = 7.1" diagonal (18.0 cm) high-resolution, 10-level grayscale LCD with backlighting (240 x 360 pixels)
- Case:** Fully gasketed, high impact plastic alloy, waterproof to IEC 529 IPX7 standards
- Temp. range:** 5°F to 158°F (-15°C to 70°C)

Accessories

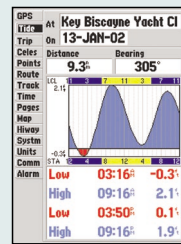
- Standard:** Power/data cable
Bail mount
Protective front cover
Remote antenna with 30' cable
Owner's manual
Quick reference guide
- Optional:** Preprogrammed data cards with BlueChart™ marine cartography
AC/PC adapter
12-volt adapter cable
USB data card programmer
Second mounting station
GBR 23 beacon receiver
MapSource™ CDs:
Fishing Hot Spots®
U.S. Waterways & Lights
Roads & Recreation
WorldMap



The graphic pointer helps you stay on course to your destination.



The big numbers option makes data fields readable from a distance.



Tide charts display detailed tide data for the U.S.



GPSMAP 232



GPSMAP 182



GPSMAP 182C

©2001 GARMIN Corporation



GARMIN International
1200 East 151st Street
Olathe, Kansas 66062, U.S.A.
913/397.8200 fax 913/397.8282

GARMIN (Europe) Ltd.
Unit 5, The Quadrangle
Abbey Park Industrial Estate
Romsey, SO51 9AQ, U.K.
44/1794.519944 fax 44/1794.519222

GARMIN (Asia) Corporation
No. 68, Jangshu 2nd Rd.
Shijr, Taipei County, Taiwan
886/2.2642.9199 fax 886/2.2642.9099

www.garmin.com

Specifications are preliminary and subject to change without notice.

* Subject to accuracy degradation to 100m 2DRMS under the U.S. Department of Defense imposed Selective Availability Program.