

A vital surveillance link in your onboard

Garmin Marine Network™, these

Steering clear of trouble just got easier.

X-band digital color radars combine

power, range and high-definition

targeting with the ultimate in plug-and-

play connectivity. Unlike competitive

designs, which require a dedicated

display/processor unit, all Garmin radar

processing is contained in the remote

antenna/scanner. The result: greater

efficiency and redundancy, since any

chartplotter on the network can display

and control the radar. The GMR 20 is a

2 kW radar with 24 nm range. The GMR

40 offers 4 kW output and a 36 nm range.

Both units feature sleek, 28-inch low-

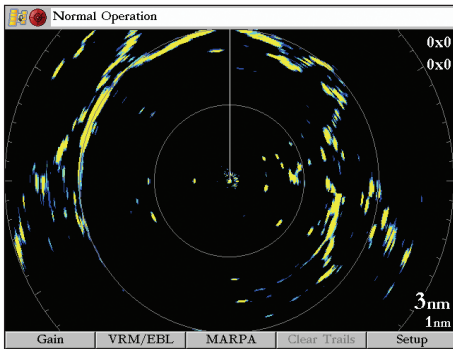
profile radomes with a beamwidth of

3.6° for the clearest target definition at

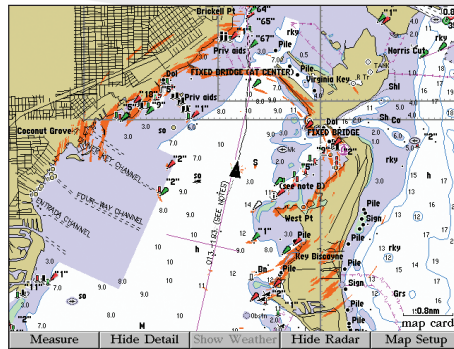
all ranges and in all weather conditions.



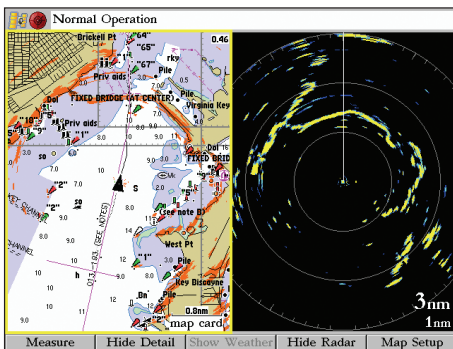
Shown with optional aftermarket mount



With a narrower beamwidth (3.6°) than other radars in its class, the Garmin GMR 20/40 series offers more precise definition of targets.



As an aid in locational awareness, the GMR 20/40 radar image can be overlaid on the moving map cartography display.



The screen can be split to show overlay and standard radar simultaneously.

- Weight:** Dome: 26 lbs; cable: 8.4 lbs
- Physical Size:** 28" diameter, 8" high
- Transmit Power:** 2KW (GMR20), 4KW (GMR40)
- Power input:** 10-35 Vdc, 25W
- Antenna Beamwidth:** 3.6 degrees horizontal / 25 degrees vertical
- Antenna RPMs:** 24 rpm
- Scanner Operating Temperature:** Range: -15 degrees C to 70 degrees C, and a relative humidity up to 95% at 35 degrees C
- Wind Velocity (relative):** Withstands up to 100 Kts without performance degradation
- Scanner Waterproofing:** Waterproof to IEC 60529 IPX7 standards
- Bearing Accuracy:** 1 degree
- Maximum Range:** 24 nm (GMR 20) 36nm (GMR 40)
- Minimum Range:** 20 meters

- Range Discrimination:** 20 meters
- Range Ring Accuracy:** 20 meter or +/- 1.5% of range scale, whichever is greater
- Controls:** Auto & Manual Gain Adjust; Manual or Auto (AFC) receiver tuning; Manual adjust for Rain Clutter and 3 presets for Sea Clutter.
- VRM/EBL:** 2 user adjustable, capable of floating
- Presentation Modes:** North up, Course up, Heading up
- Interference Rejection:** Yes - Anti-jamming algorithm
- Radar/Chart Overlay:** Overlay mode is supported. Users can view "radar only" split the display for multiple view of radar and charting overlays.
- Zoom Mode:** 2x, 4x
- Trails:** Short, Medium, Long
- Guard Zone Alarm:** 2 guard zones - user adjustable
- Off center Function:** Look ahead, Auto Shift and Manual
- FTC:** Low, Medium, High
- MARPA:** Yes. Tracks up to 10 MARPA targets for radar plotting and collision avoidance. (Heading sensor is required)

©2004 Garmin Ltd. or its subsidiaries



Garmin International, Inc.
1200 East 151st Street
Olathe, Kansas 66062, U.S.A.
913/397.8200 fax 913/397.8282

Garmin (Europe) Ltd.
Unit 5, The Quadrangle
Abbey Park Industrial Estate
Romsey, SO51 9DL, U.K.
44/1794.519944 fax 44/1794.519222

Garmin Corporation
No. 68, Jangshu 2nd Rd.
Shijr, Taipei County, Taiwan
886/2.2642.9199 fax 886/2.2642.9099

www.garmin.com

Specifications are preliminary and subject to change without notice.

* All radar graphics and cartography pictured here are derived from a Garmin Marine Network™ system utilizing the GPSMAP® 3006C/3010C series chartplotter/MFD (multifunction display).