



The Fishfinder 80 wraps simple operations and Garmin's exclusive fishfinder technology into this entry-level sonar. This unit even comes standard with temperature and an adjustable

Easy to use, compact sonar

swivel mount so you can view the display from the console, then flip it around to use from the bow. With a black on white display, the Fishfinder 80 has one of the sharpest screens for the money. Another feature you won't find on other low-cost fishfinders — uninterrupted operation, meaning the sonar won't quit while you're changing settings.



specifications

Sonar features

Power output: 100 watts (RMS), 800 watts (peak to peak)
Frequency: 200 kHz
Depth: 600 foot max depth¹
Display options: Auto ranging, 2X and 4X auto and manual zoom, 3 fish symbol sizes, adjustment bar

Alarms: Fish size and shallow water
Transducer auto-sense: Automatically displays temp data without menus
See-Thru® technology: Shows weak/strong returns simultaneously
Depth Control Gain (DCG®): Automatically adjusts fishfinder sensitivity according to depth

Power down backup of setting: Customer settings not lost when unit is turned off

Physical features

Size: 4.7"W x 4.9"H x 2.4"D (11.9 x 12.4 x 6.1 cm)
Weight: 15.5 oz.
Display: 2.25"W x 3.25"H (5.8 x 8.3 cm)
 64 x 128 pixel high-contrast, FSTN display

Backlight: 3-level display and keys
Power input: 10 to 18v DC w/ high voltage protection
Power usage: 3.5 watts max
Nominal power: 12v DC at 0.28 amps
Case: Fully gasketed, high-impact plastic alloy
Waterproof: Waterproof to IEC 529 IPX7 standards, submerged to 1 meter for 30 minutes

Temperature range: 5°F to 158°F (-15°C to 70°C)

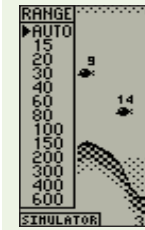
Accessories

Standard: Owner's manual
 Tilt/swivel mount
 6' power/20' transducer cable
 Transom/trolling mount transducer with temp

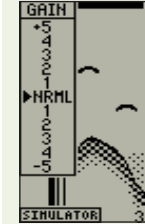
Optional: Unit cover

Optional transducers²: Plastic transom mount with depth/temp
 Bronze thru-hull with depth/temp
 Plastic thru-hull with depth/temp
 In-hull
 Temperature sensor
 Suction cup adapter

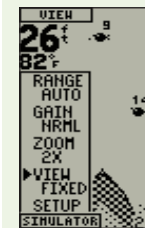
² Optional transducers require power cable, which can be purchased separately.



Set range adjustment to auto or select a specific range.



Select the level of detail to be displayed.



Fixed view allows you to zoom in on areas between the surface and the bottom.



The FishFinder 80 Portable comes with power case and suction-mount transducer. Power case works with other Garmin fishfinders and can be purchased separately.

©2003 Garmin Ltd. and its subsidiaries



Garmin International, Inc.
 1200 East 151st Street
 Olathe, Kansas 66062, U.S.A.
 913/397.8200 fax 913/397.8282

Garmin (Europe) Ltd.
 Unit 5, The Quadrangle
 Abbey Park Industrial Estate
 Romsey, SO51 9DL, U.K.
 44/1794.519944 fax 44/1794.519222

Garmin Corporation
 No. 68, Jangshu 2nd Rd.
 Shijr, Taipei County, Taiwan
 886/2.2642.9199 fax 886/2.2642.9099

www.garmin.com

Specifications are preliminary and subject to change without notice.

¹ Depth capacity is dependent on water salinity, bottom type and other water conditions.