

Sneak Peek

When seeing your targets clearly is the goal, the Fishfinder 120 is the tool. With 240 vertical pixels on a four-level grayscale display, you get better separation and contrast. The Fishfinder



Exceptional display at a small price

120 allows you to view and change settings without leaving the sonar screen. It also has an internal backup system that automatically saves your settings. Another feature you won't find on other fishfinders for the money — uninterrupted operation, meaning the sonar won't stop while you're changing settings.



specifications

Features

Display options: Auto ranging, 2X and 4X auto and manual zoom, 3 fish symbolsizes, adjustment menu

Alarms: Deep water, shallow water, fish, low battery

Transducer auto-sense: Automatically displays temp data without menus

See-Thru® technology: Shows weak/strong returns simultaneously

Depth Control Gain (DCG®): Automatically adjusts fishfinder sensitivity according to depth

Power down backup of setting: Customer setting not lost when unit is turned off

Sounder

Power output: 100 watts (RMS), 800 watts (peak to peak)

Frequency: 200 kHz

Depth: 600 foot max depth*

Physical

Display: 240 H x 128 W pixel, 3.1" x 3.2" (7.9 X 8.1 cm), high contrast, 4-level grayscale FSTN display

Size: 6.1"W x 4.9"H x 2.6"D (15.5 X 12.5 X 6.6 cm)

Weight: 18.7 oz.

Case: Fully gasketed, high-impact plastic alloy

Keys: Backlighted

Temperature range: 5°F to 158°F (-15°C to 70°C)

Waterproof: IEC 529, level IPX-7
Submerged to 1 meter for 30 minutes

Power

Input: 10 to 18V DC w/ high voltage protection

Usage: 8 watts max

Nominal power: 12V DC at 0.5 amps

Accessories

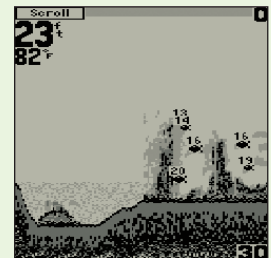
Standard: Quick release swivel mount
6' power / 20' transducer cable
Transom/trolling mount transducer with temp
User's manual

Optional: Unit cover
Quick release flush mount

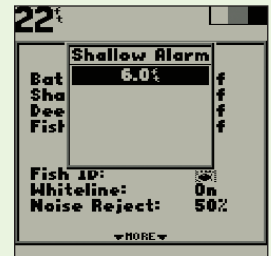
Optional Transducers: Plastic transom mount with depth/temp
Bronze thru-hull with depth/temp (200 kHz only)
Plastic thru-hull with depth/temp
In-hull
Temperature sensor
Suction cup adapter



Adjustment menu lets you change settings from the sonar screen.



Optional fish depth numbers help you gauge your targets.



Alarms alert you to shallow water, low battery and more.

©2003 Garmin Ltd. and its subsidiaries



Garmin International, Inc.
1200 East 151st Street
Olathe, Kansas 66062, U.S.A.
913/397.8200 fax 913/397.8282

Garmin (Europe) Ltd.
Unit 5, The Quadrangle
Abbey Park Industrial Estate
Romsey, SO51 9DL, U.K.
44/1794.519944 fax 44/1794.519222

Garmin Corporation
No. 68, Jangshu 2nd Rd.
Shijr, Taipei County, Taiwan
886/2.2642.9199 fax 886/2.2642.9099

www.garmin.com

Specifications are preliminary and subject to change without notice.

* Depth capacity is dependent on water salinity, bottom type and other water conditions.